

O.D.O.T. DISTRICT 2 SURVEY OFFICE (USE ONLY)

PERSONNEL

REFERENCE NO. 39

SHEET 7 OF 19

NOTES RIPPLE  
 H.C. BARBOUR  
 R.C. GEYMAN

DATE 7/15/91  
 WEATHER SUNNY  
 TEMP. 85°

ROUTE US 20  
 COUNTY SANDUSKY  
 TOWNSHIP GREEN CREEK  
 SECTION 6  
 T 4 N R 16 E

DWG BY NIESE PID 102898

TYPE MONUMENT BOAT SPIKE

ON SURFACE - BELOW -

OFFSET  $\odot$  PAVEMENT                      LT : RT

           TO            EDGE PAVEMENT

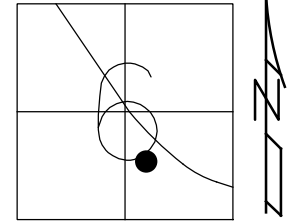
STATION: 1136+43.89

HORIZ.DATUM: NAD83 (2011)

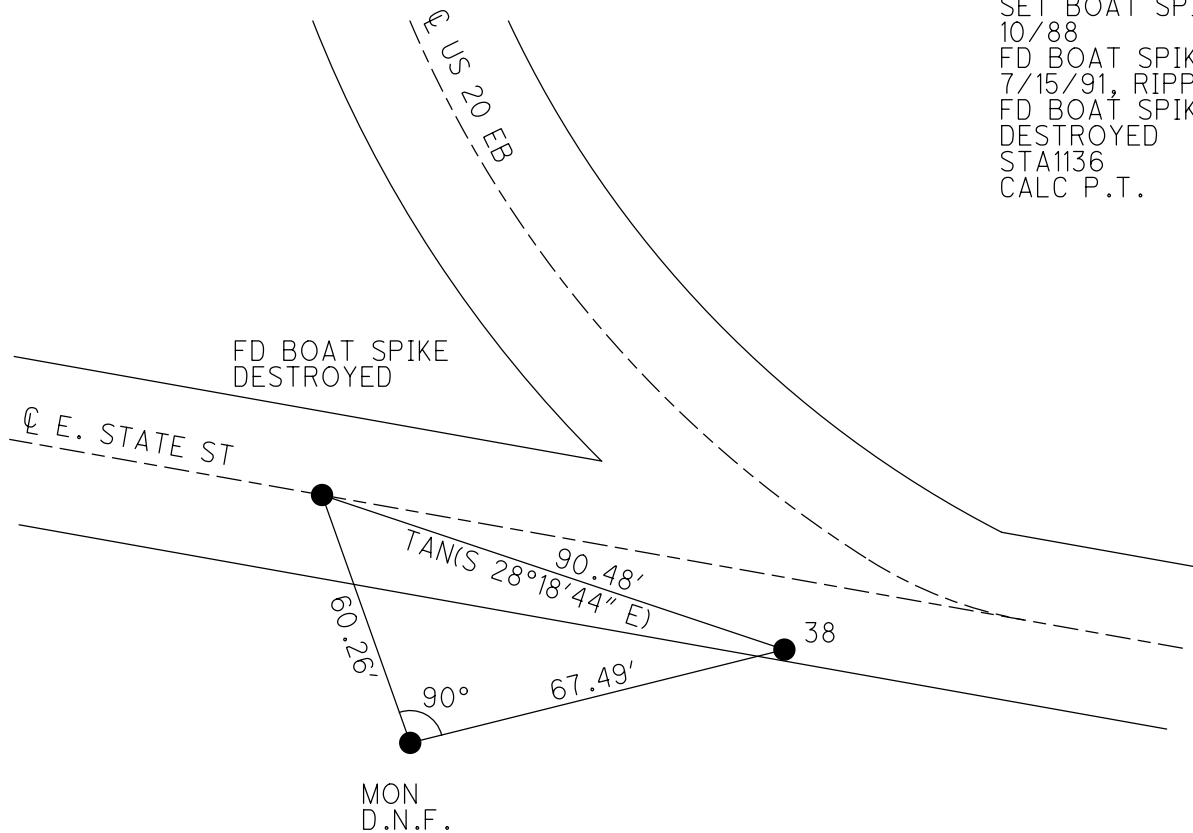
GEOID: NAVD88 2012A

GRID: NORTHING: 607536.941

EASTING: 1814900.193



RECORD:  
 SET BOAT SPIKE  
 10/88  
 FD BOAT SPIKE  
 7/15/91, RIPPLE  
 FD BOAT SPIKE  
 DESTROYED  
 STA1136  
 CALC P.T.



# O.D.O.T. DISTRICT 2 SURVEY OFFICE

PERSONNEL \_\_\_\_\_

REFERENCE NO. \_\_\_\_\_

SHEET \_\_\_\_\_ OF \_\_\_\_\_

NOTES Ripple  
 H.C. BARBOUR  
 R.C. Geyman

DATE 7/15/91  
 WEATHER Sunny  
 TEMP. 85°

ROUTE #20  
 COUNTY SANDUSKY  
 TOWNSHIP Bathville  
 SECTION 6 GreenCreek  
 T 4 N R 16 E

TYPE MONUMENT Boat Spk.  
 ON SURFACE - BELOW \_\_\_\_\_  
 LEFT- & PAV'T. - RIGHT \_\_\_\_\_  
 \_\_\_\_\_ TO \_\_\_\_\_ EDGE PAVEMENT  
 S.L.M. 1136 + 43.89

6.	5
7	8

