

O.D.O.T. DISTRICT 2 SURVEY OFFICE (USE ONLY)

PERSONNEL

REFERENCE NO. 38

SHEET 6 OF 19

NOTES LEU

DATE 5/21/20

ROUTE US 20

H.C. LEU

WEATHER CLOUDY

COUNTY SANDUSKY

R.C. AUBLE

TEMP. 58°

TOWNSHIP GREEN CREEK

SECTION 6

DWG BY NIESE PID 102898

T 4 N R 16 E

TYPE MONUMENT CMON

~~ON SURFACE~~ - BELOW 2"

OFFSET \varnothing PAVEMENT 19.2' ~~LT~~ : RT

~~TO~~ ~~EDGE PAVEMENT~~

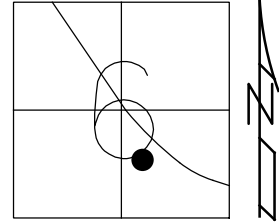
STATION: 1138+40

HORIZ.DATUM: NAD83(2011)

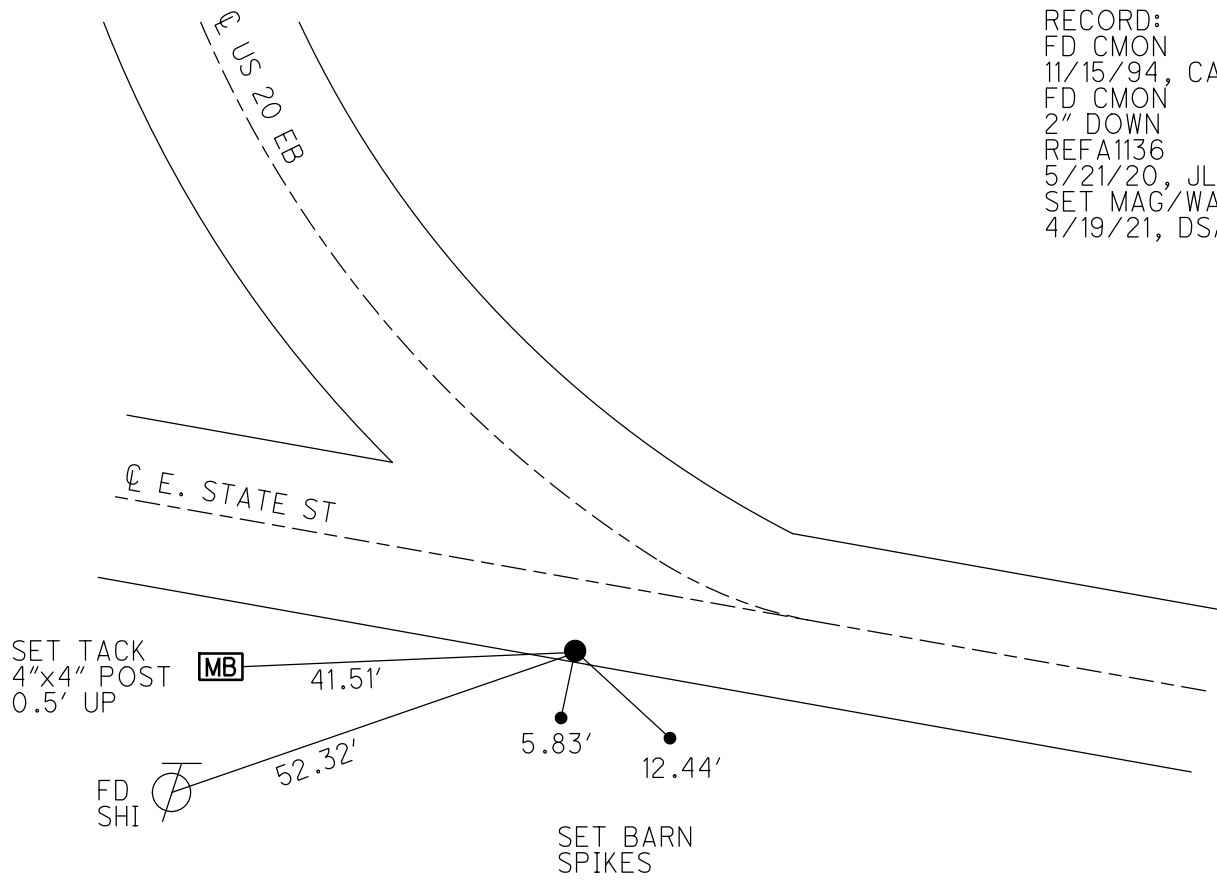
GEOID: NAVD88 2012A

GRID: NORTHING: 607457.556

EASTING: 1814943.005



RECORD:
FD CMON
11/15/94, CAL
FD CMON
2" DOWN
REFA1136
5/21/20, JLL
SET MAG/WASHER
4/19/21, DSA



O.D.O.T. DISTRICT 2 SURVEY OFFICE

PERSONNEL _____

REFERENCE NO. _____ SHEET _____ OF _____

NOTES LOEHRE CRAG

H.C. CANTREURY, MARY

R.C. MOSEER, KEVIN

DATE 11-15-94

WEATHER Cloudy

TEMP. +48

ROUTE U.S. 20

COUNTY SANDUSKY

TOWNSHIP Green Creek

SECTION 6

T 4 N R 16 E

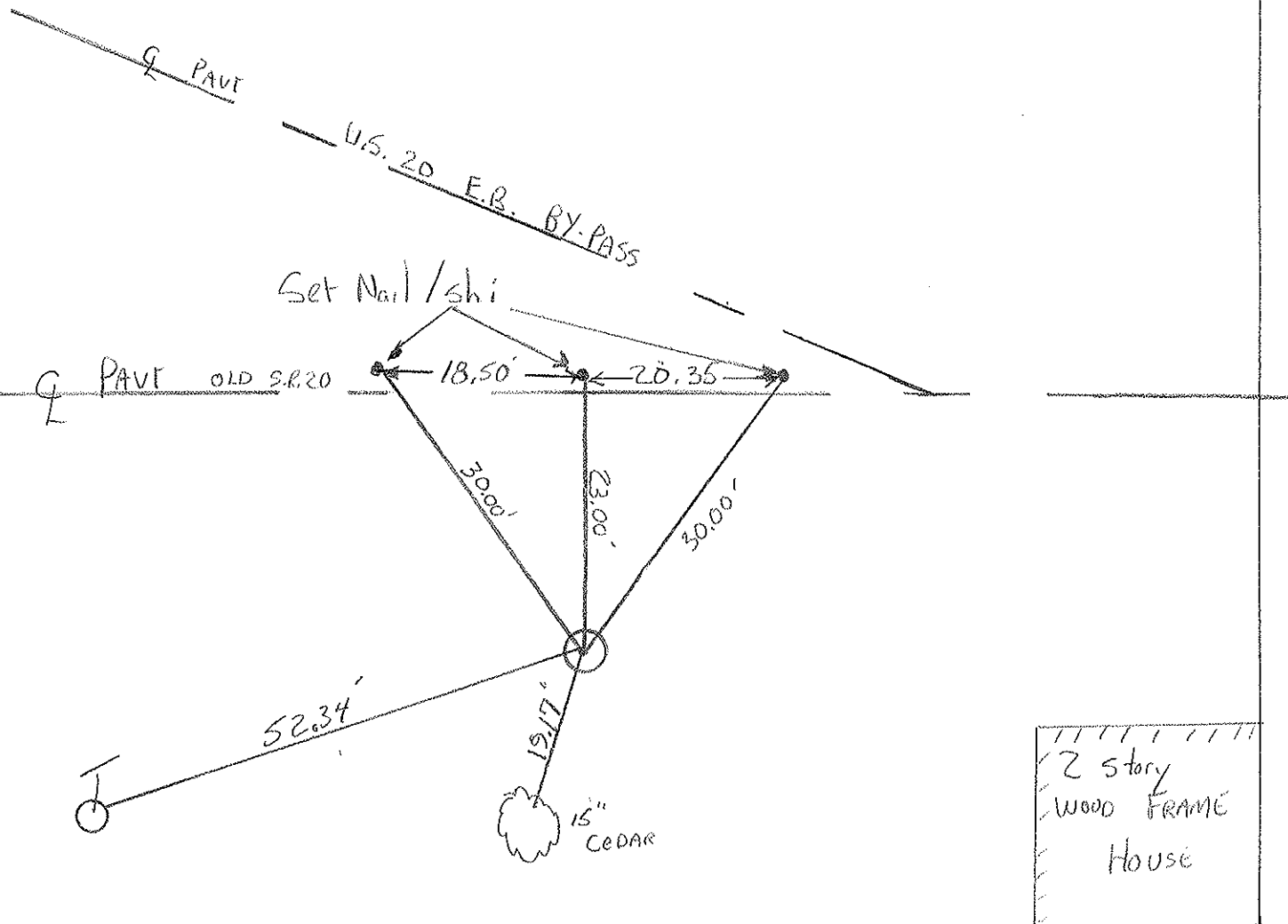
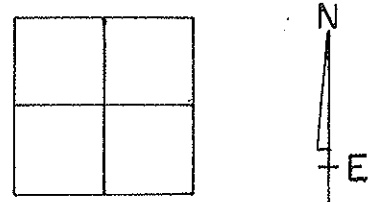
TYPE MONUMENT IR ROD IN CONC

ON SURFACE - BELOW _____

LEFT - <math>\phi</math> PAV'T. - RIGHT 19.2 Rt

TO _____ EDGE PAVEMENT

S.L.M. 1138 + 40'



Resurfaced 2004

O.D.O.T. DISTRICT 2 SURVEY OFFICE

PERSONNEL

REFERENCE NO. _____

SHEET 1 OF _____

NOTES Cronin

DRAWN 7/9/87

H.C. Ripple

DATE 6/29/87

R.C. Barbour

WEATHER sunny

Geyman

TEMP. 68°

ROUTE U.S. #20

COUNTY Sandusky

TOWNSHIP Green Creek

SECTION 5

T 4 N R 16 E

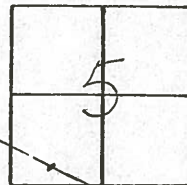
TYPE MONUMENT P.K. & washer

ON SURFACE - BELOW on surface

LEFT - ☉ PAV'T. - RIGHT 10' ± Lt. - S.E.P. W.B. Lane

TO _____ EDGE PAVEMENT

S.L.M. _____



40



P.I.

$\Delta = 00^{\circ}27'00''$ Lt. Rec.

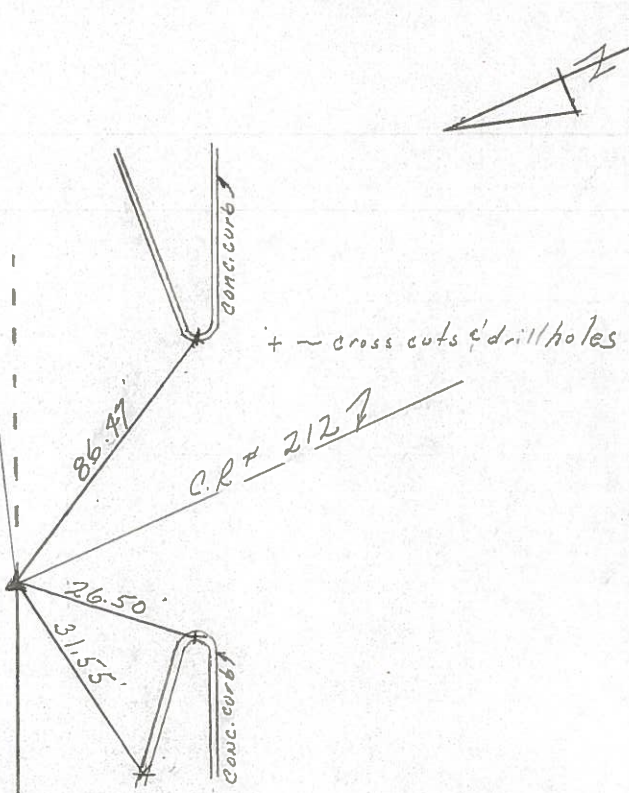
1138+55.05

P.K. & washer atop R.R. spike

atop P.K. - Set R.R. spike

previously

U.S. #20



4-2-71

PERSONNEL TITLE PERSONNEL TITLE

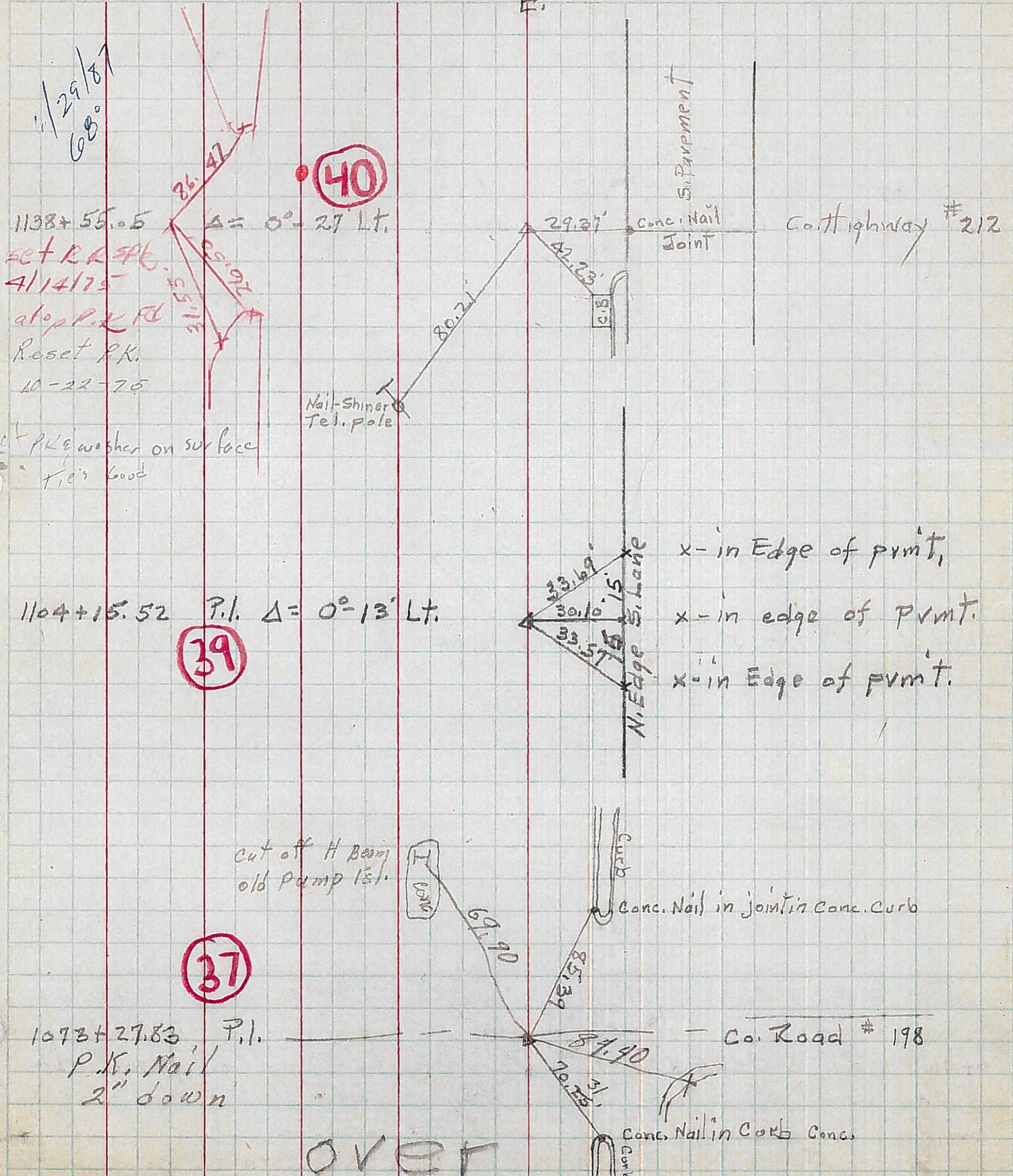
Hawk
Hirst
Miller

COUNTY Sandusky DATE 6-1-53

S. R. US. #20 WEATHER Fair

SEC. Fremont-Clyde TEMP. 65 30°

DESCRIPTION Controll point ties LEFT CENTER LINE RIGHT JOB NO.



PERSONNEL TITLE PERSONNEL TITLE

COUNTY Sandusky DATE 3-24-50

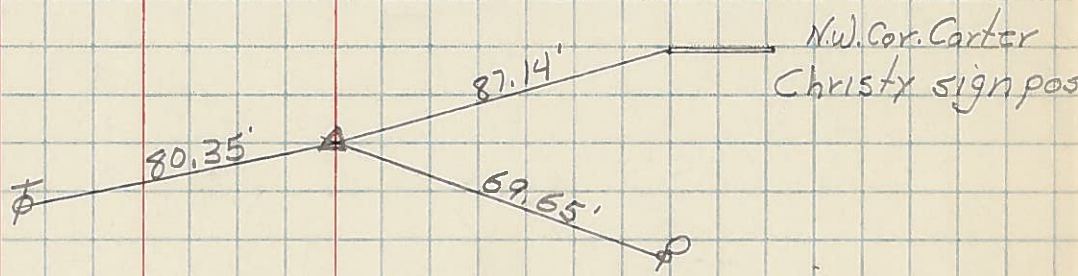
S. R. #20 WEATHER

SEC. J TEMP.

DESCRIPTION LEFT CENTER LINE RIGHT JOB NO.

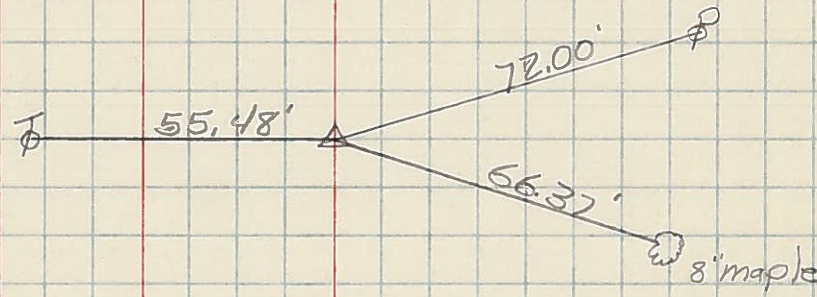
40

P.I. Sta. 1138+55.05
Δ = 0°-27' Lt.



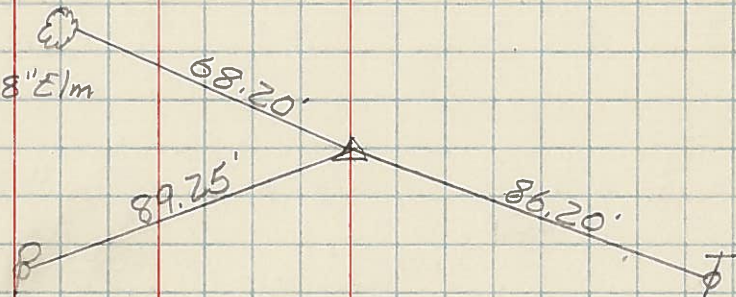
41

P.I. Sta. 1180+40.11
Δ = 0°-44' Rt.



42

P.I. Sta. 1219+28.01
Δ = 1°-29' Rt.



43

P.I. Sta. 1272+89.38
Δ = 1°-58' Lt.

