

O.D.O.T. DISTRICT 2 SURVEY OFFICE (USE ONLY)

PERSONNEL _____

REFERENCE NO. 40

SHEET 8 OF 19

NOTES AUBLE DATE 5/21/20
 H.C. LEU WEATHER FAIR
 R.C. AUBLE TEMP. 61°

ROUTE US 20
 COUNTY SANDUSKY
 TOWNSHIP GREEN CREEK
 SECTION 5
 T 4 N R 16 E

DWG BY NIESE PID 102898

TYPE MONUMENT MAG/WASHER

ON SURFACE - ~~BELOW~~ ON

OFFSET 2.0' LT : ~~RT~~

- TO - EDGE PAVEMENT

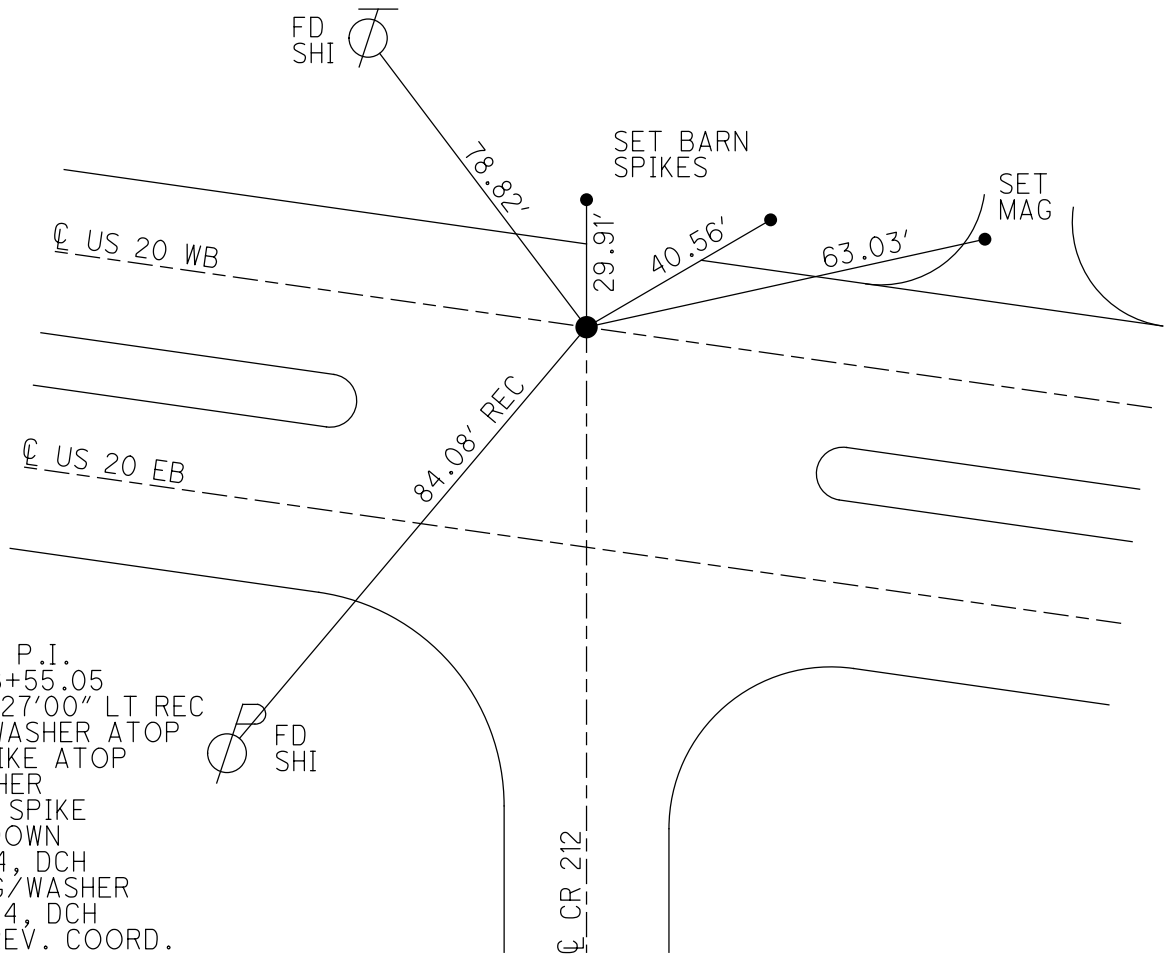
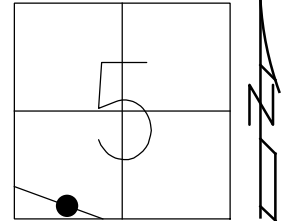
STATION: 1173+58

HORIZ.DATUM: NAD83 (2011)

GEOID: NAVD88 2012A

GRID: NORTHING: 606312.165

EASTING: 1818287.584



RECORD: P.I.
 STA 1138+55.05
 $\Delta = 00^{\circ}27'00''$ LT REC
 FD PK/WASHER ATOP
 R.R. SPIKE ATOP
 PK/WASHER
 FD R.R. SPIKE
 6 1/4" DOWN
 3/29/04, DCH
 SET MAG/WASHER
 10/26/04, DCH
 USED PREV. COORD.
 SURVEY PID #95861
 REF40
 8/10/18, JLL
 FD MAG/WASHER
 5/21/20, JLL

O.D.O.T. DISTRICT 2 SURVEY OFFICE

PERSONNEL

REFERENCE NO. _____

SHEET 2 OF 4

NOTES _____ HOMAN _____

DATE 3-29-04

ROUTE U.S. 20

H.C. CANTERBURY

WEATHER CLOUDY

COUNTY SANDUSKY

R.C. BARNHISEL

TEMP. 55°

TOWNSHIP GREEN CREEK

_____ ARMS _____

SECTION 5

T 4 N R 16 E

TYPE MONUMENT _____ R.R. SPIKE _____

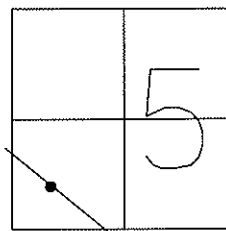
~~ON SURFACE~~ - BELOW 6 1/4"

LEFT - ~~Q PAVT~~ - RIGHT 1.4' LT

_____ TO _____ EDGE PAVEMENT

S.L.M. _____ 1173+58 _____

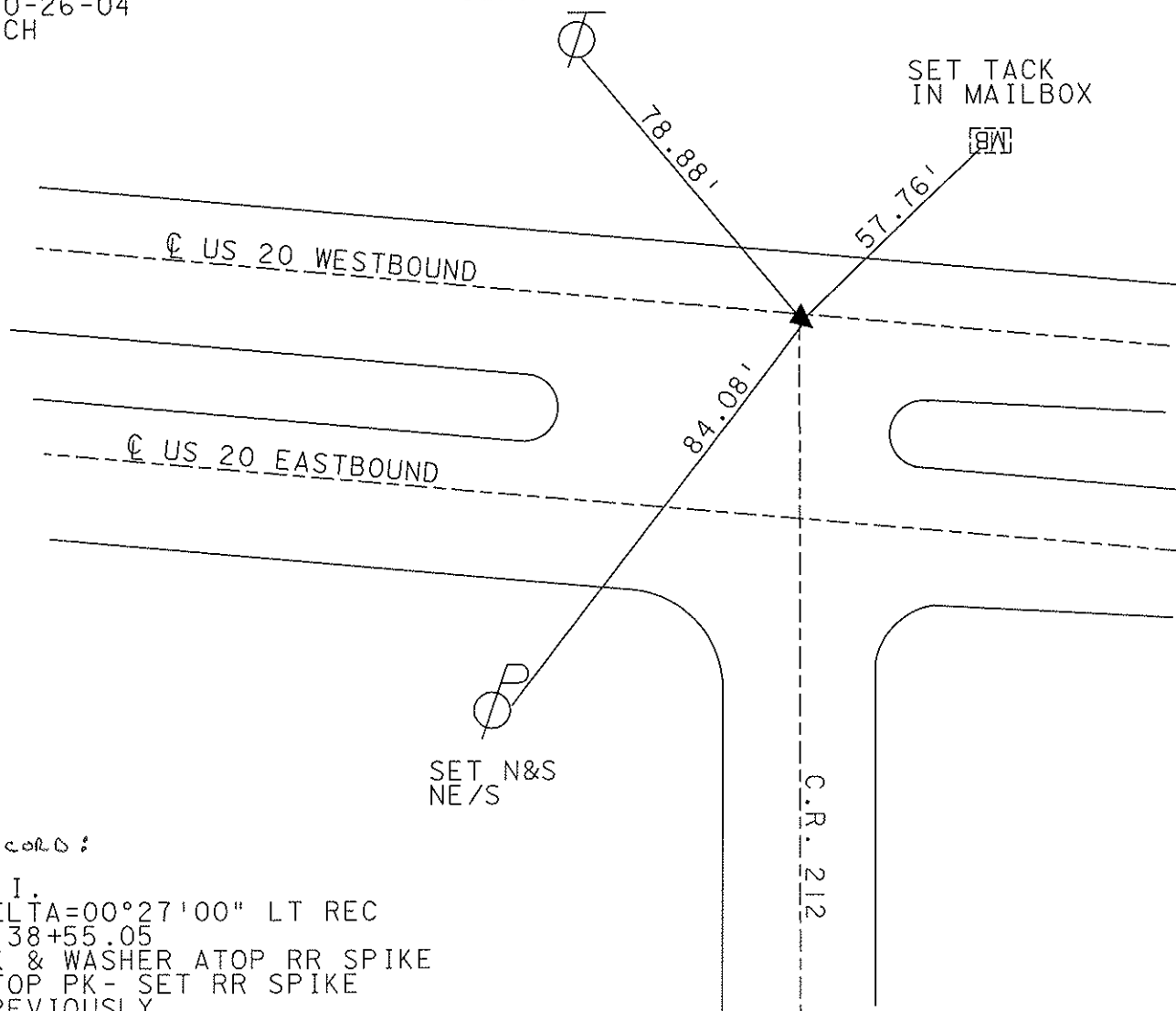
ON Q PAVT TO SOUTH



RESET MAG NAIL
& WASHER
10-26-04
DCH

SET N&S
SE/S

SET TACK
IN MAILBOX



SET N&S
NE/S

C.R. 212

Records:

P.I.
DELTA=00°27'00" LT REC
1138+55.05
PK & WASHER ATOP RR SPIKE
ATOP PK - SET RR SPIKE
PREVIOUSLY

Resurfaced 2004

O.D.O.T. DISTRICT 2 SURVEY OFFICE

PERSONNEL

REFERENCE NO. _____

SHEET 1 OF _____

NOTES Cronin

DRAWN 7/9/87

H.C. Ripple

DATE 6/29/87

R.C. Barbour

WEATHER sunny

Geyman

TEMP. 68°

ROUTE U.S. #20

COUNTY Sandusky

TOWNSHIP Green Creek

SECTION 5

T 4 N R 16 E

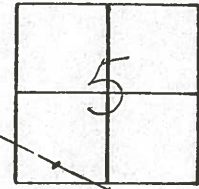
TYPE MONUMENT P.K. & washer

ON SURFACE - BELOW on surface

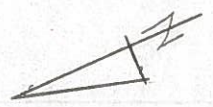
LEFT - ☉ PAV'T. - RIGHT 10' ± Lt. - S.E.P. W.B. Lane

TO EDGE PAVEMENT

S.L.M. _____



40



P.I.

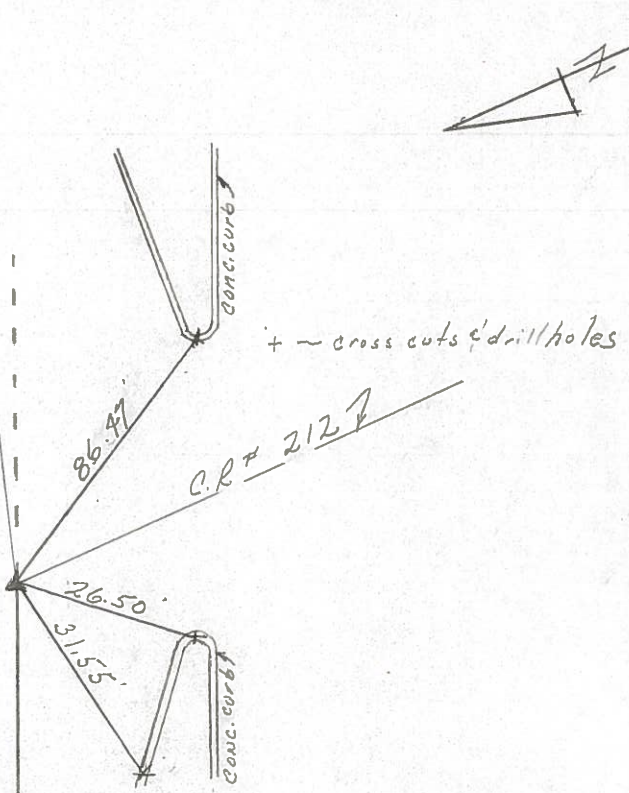
$\Delta = 00^{\circ}27'00''$ Lt. Rec.

1138+55.05

P.K. & washer atop R.R. spike

atop P.K. - Set R.R. spike

previously



U.S. #20

4-2-71

PERSONNEL TITLE PERSONNEL TITLE

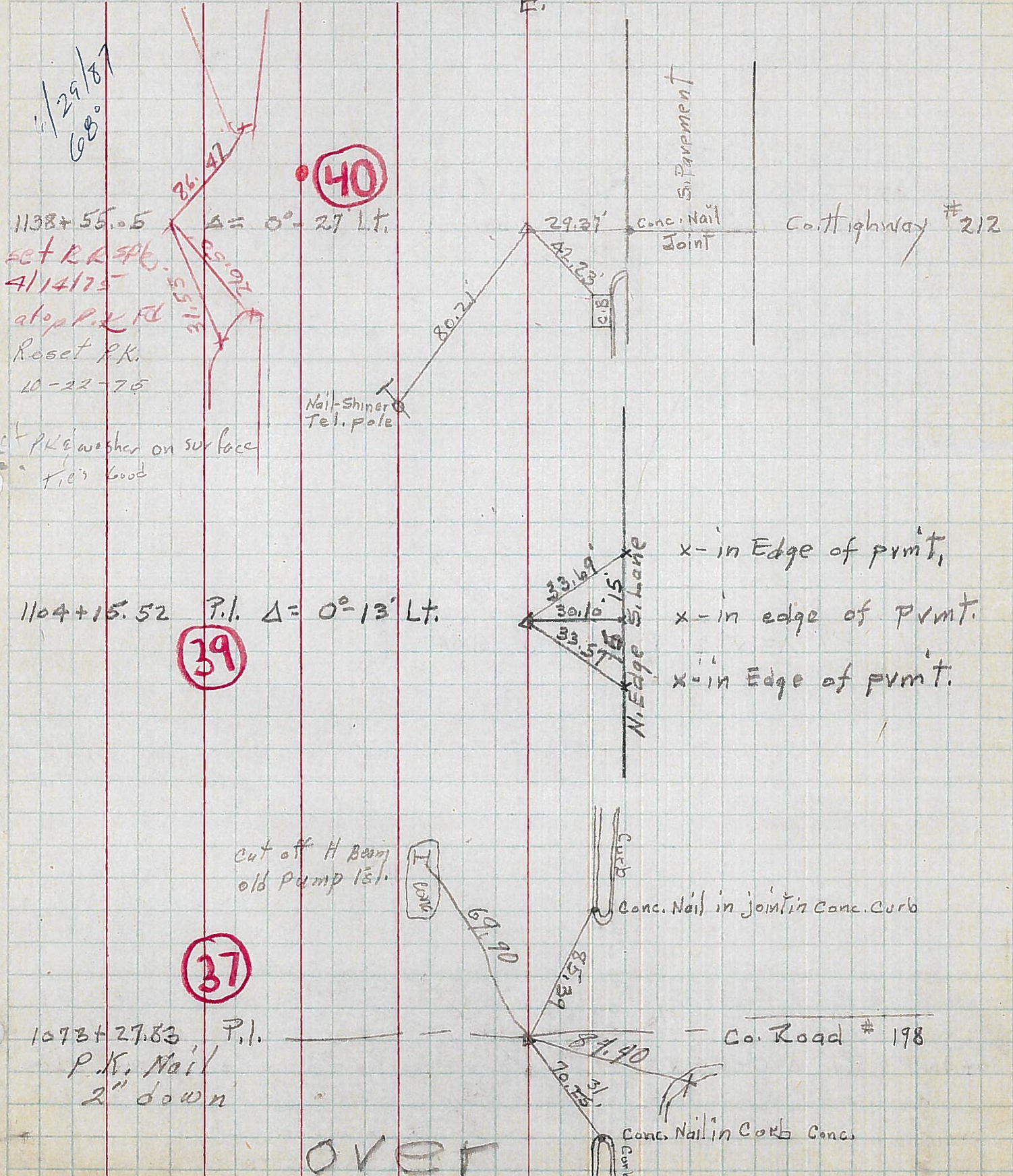
Hawk
Hirst
Miller

COUNTY Sandusky DATE 6-1-53

S. R. US. #20 WEATHER Fair

SEC. Fremont-Clyde TEMP. 65 30°

DESCRIPTION Controll point ties LEFT CENTER LINE RIGHT JOB NO.



PERSONNEL TITLE PERSONNEL TITLE

COUNTY Sandusky DATE 3-24-50

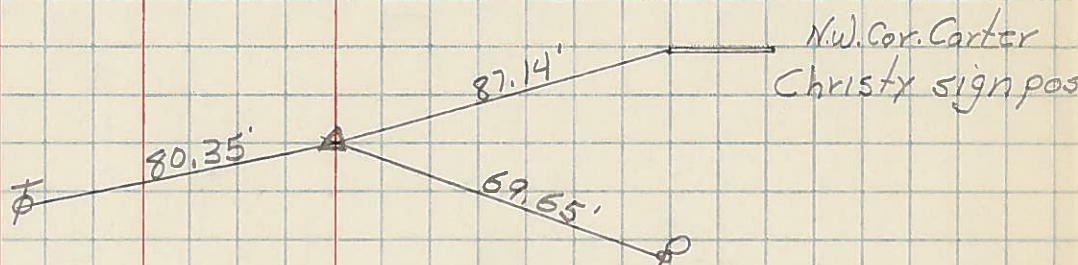
S. R. #20 WEATHER

SEC. J TEMP.

DESCRIPTION LEFT CENTER LINE RIGHT JOB NO.

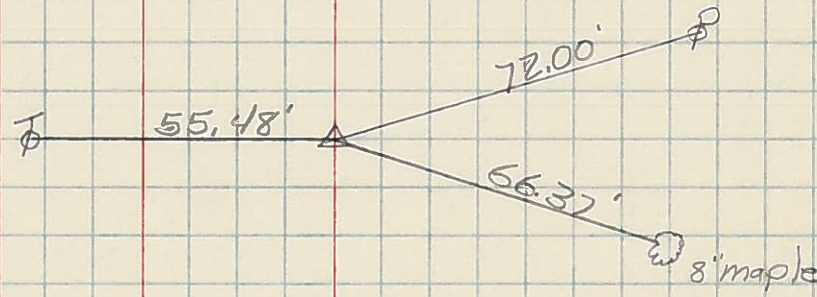
40

P.I. Sta. 1138+55.05
Δ = 0°-27' Lt.



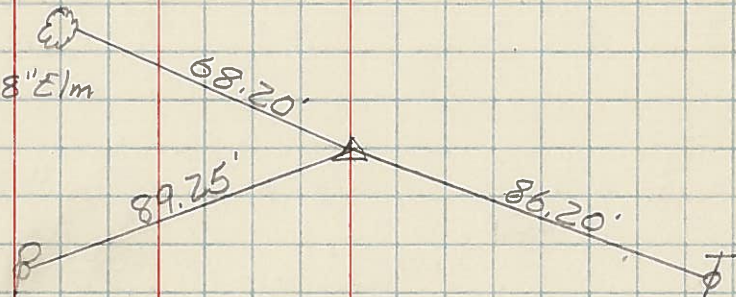
41

P.I. Sta. 1180+40.11
Δ = 0°-44' Rt.



42

P.I. Sta. 1219+28.01
Δ = 1°-29' Rt.



43

P.I. Sta. 1272+89.38
Δ = 1°-58' Lt.

