

O.D.O.T. DISTRICT 2 SURVEY OFFICE (USE ONLY)

PERSONNEL _____

REFERENCE NO. 41

SHEET 9 OF 19

NOTES AUBLE

DATE 5/21/20

ROUTE US 20

H.C. LEU

WEATHER CLOUDY/FAIR

COUNTY SANDUSKY

R.C. AUBLE

TEMP. 61°

TOWNSHIP GREEN CREEK

SECTION 8

DWG BY NIESE PID 102898

T 4 N R 16 E

TYPE MONUMENT MAG/WASHER

ON SURFACE - ~~BELOW~~ ON

OFFSET ☐ PAVEMENT 1.0' LT : ~~RT~~

- TO - EDGE PAVEMENT

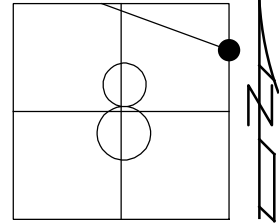
STATION: 1173+58

HORIZ.DATUM: NAD83(2011)

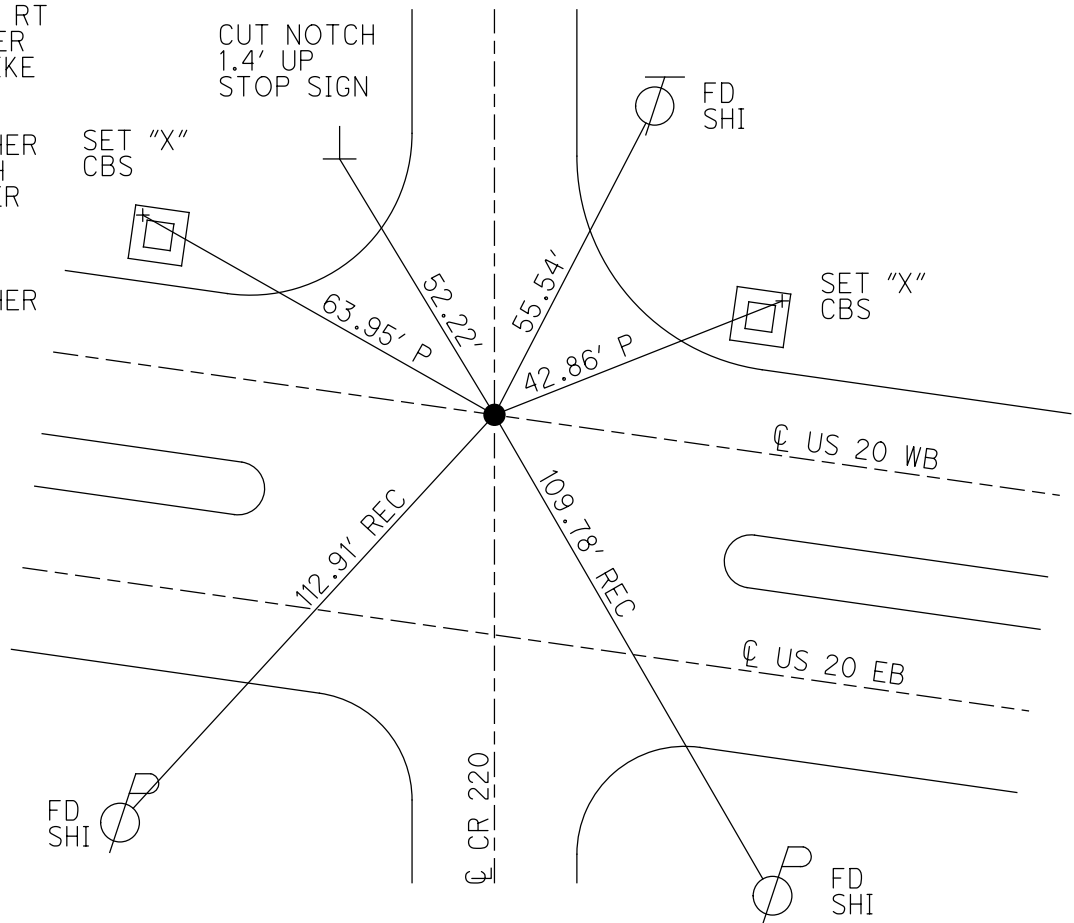
GEOID: NAVD88 2012A

GRID: NORTHING: 604919.429

EASTING: 1822232.020



RECORD: P.I.
 STA 1180+40.11
 $\Delta = 00^{\circ}44'00''$ RT
 FD P.K./WASHER
 ATOP R.R. SPIKE
 FD R.R. SPIKE
 3/29/04, DCH
 SET MAG/WASHER
 10/26/04, DCH
 FD MAG/WASHER
 REF41
 8/10/18, JLL
 5/21/20, JLL
 SET MAG/WASHER
 4/19/21, DSA



O.D.O.T. DISTRICT 2 SURVEY OFFICE

PERSONNEL

REFERENCE NO. _____

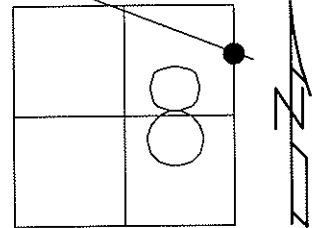
SHEET 3 OF 4

NOTES _____
 H.C. HOMAN
 CANTERBURY
 R.C. BARNHISEL
 ARMS

DATE 3-29-04
 WEATHER CLOUDY
 TEMP. 55°

ROUTE U.S. 20
 COUNTY SANDUSKY
 TOWNSHIP GREEN CREEK
 SECTION 8
T 4 N R 16 E

TYPE MONUMENT R.R. SPIKE
~~ON SURFACE~~ - BELOW 6 1/4"
~~LEFT - C PAVT - RIGHT~~ 1' LT
TO EDGE PAVEMENT
 S.L.M. 1173+58
 ON C PAVT TO NORTH

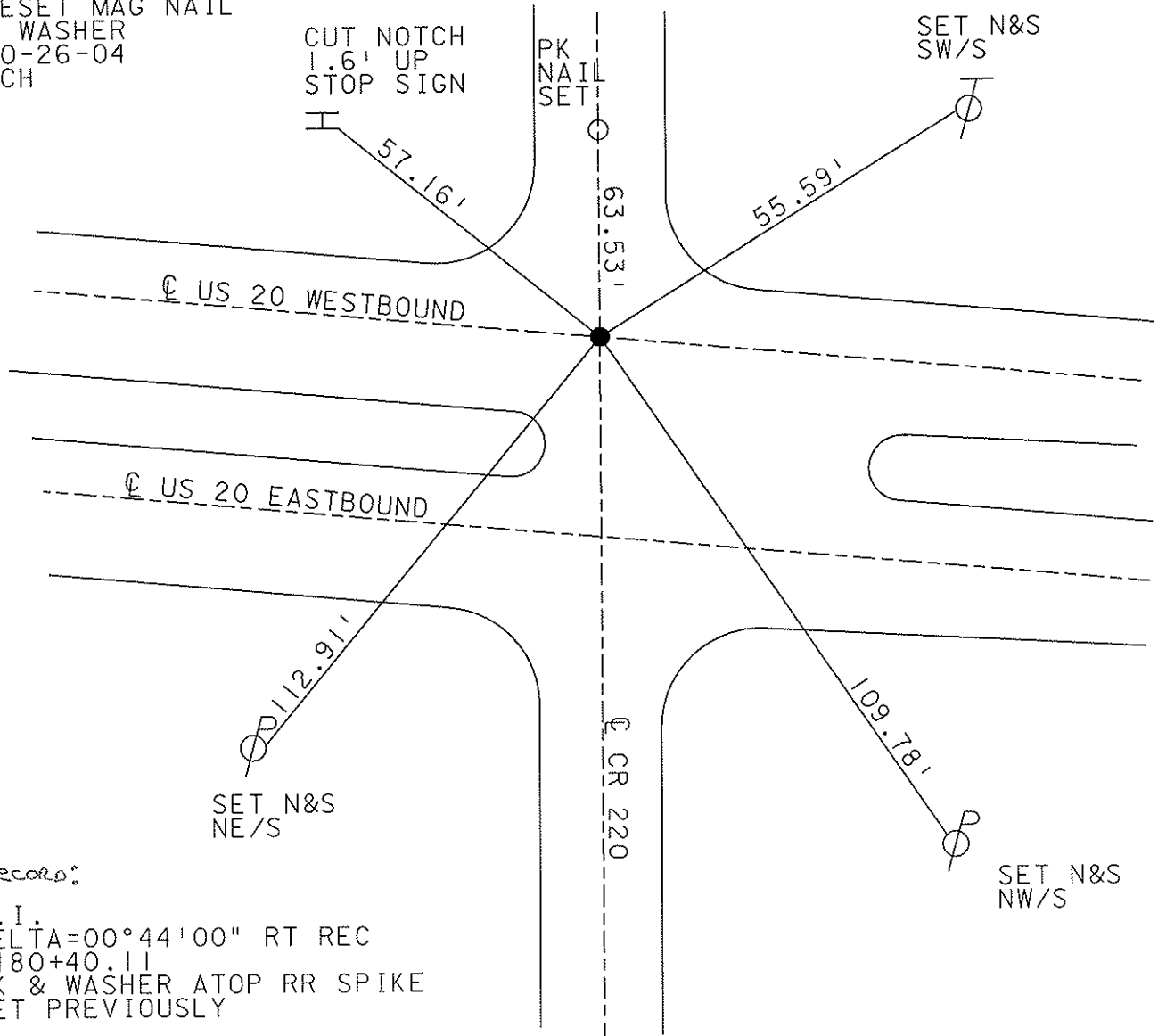


RESET MAG NAIL
 & WASHER
 10-26-04
 DCH

CUT NOTCH
 1.6' UP
 STOP SIGN

PK
 NAIL
 SET

SET N&S
 SW/S



Records:

P.I.
 DELTA=00°44'00" RT REC
 1180+40.11
 PK & WASHER ATOP RR SPIKE
 SET PREVIOUSLY

O.D.O.T. DISTRICT 2 SURVEY OFFICE

PERSONNEL

NOTES Cronin
 H.C. Ripple
 R.C. Barbour
Geyman

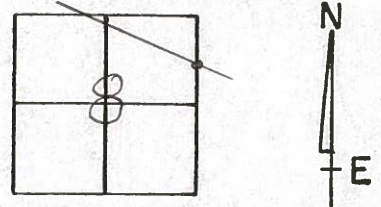
REFERENCE NO. _____

DRAWN 8/03/87
 DATE 6/29/87
 WEATHER sunny
 TEMP. 68°

SHEET 2 OF _____

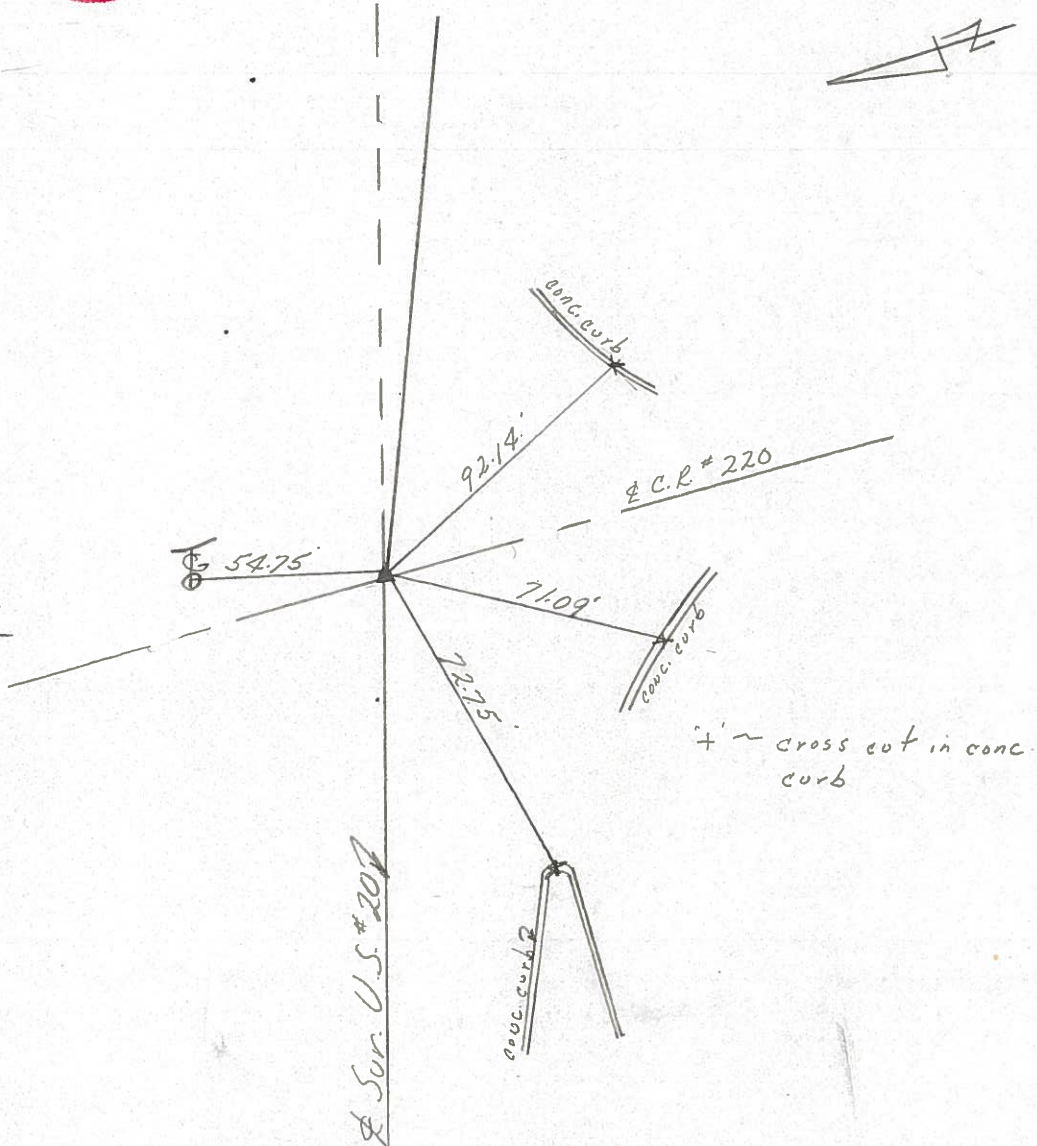
ROUTE U.S. #20
 COUNTY Sandusky
 TOWNSHIP Green Creek
 SECTION 8
T 4 N R 16 E

TYPE MONUMENT P.K. & washer
 ON SURFACE - BELOW on surface
 LEFT - € PAV'T. - RIGHT 10' ± At S.E.P. w.B. Lines
 TO _____ EDGE PAVEMENT
 S.L.M. _____



41

P.I.
 $\Delta = 00^{\circ}44'00''$ Rt. Rec.
1180+40.11
P.K. & washer at top R.R.
Spike set previously



PERSONNEL TITLE PERSONNEL TITLE

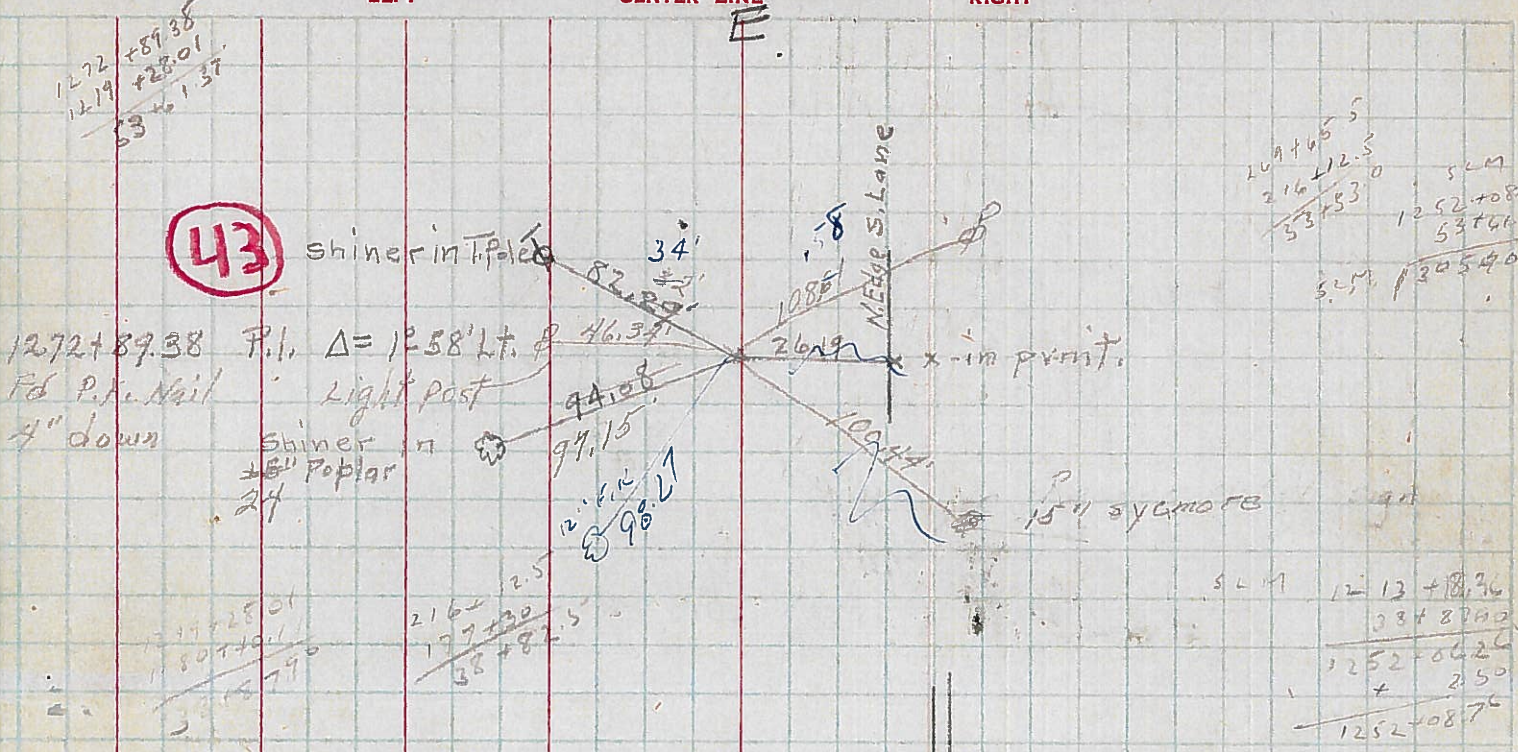
COUNTY DATE 1-24-72

S. R. WEATHER Cloudy

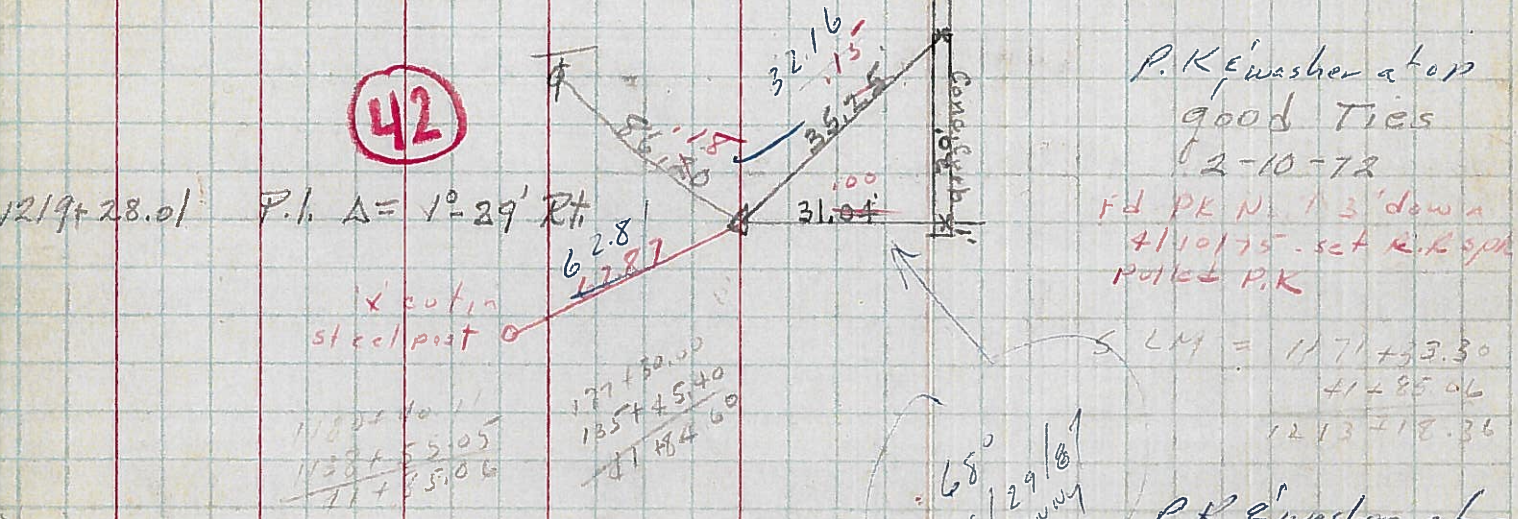
SEC. TEMP. 38°

DESCRIPTION LEFT CENTER LINE RIGHT JOB NO.

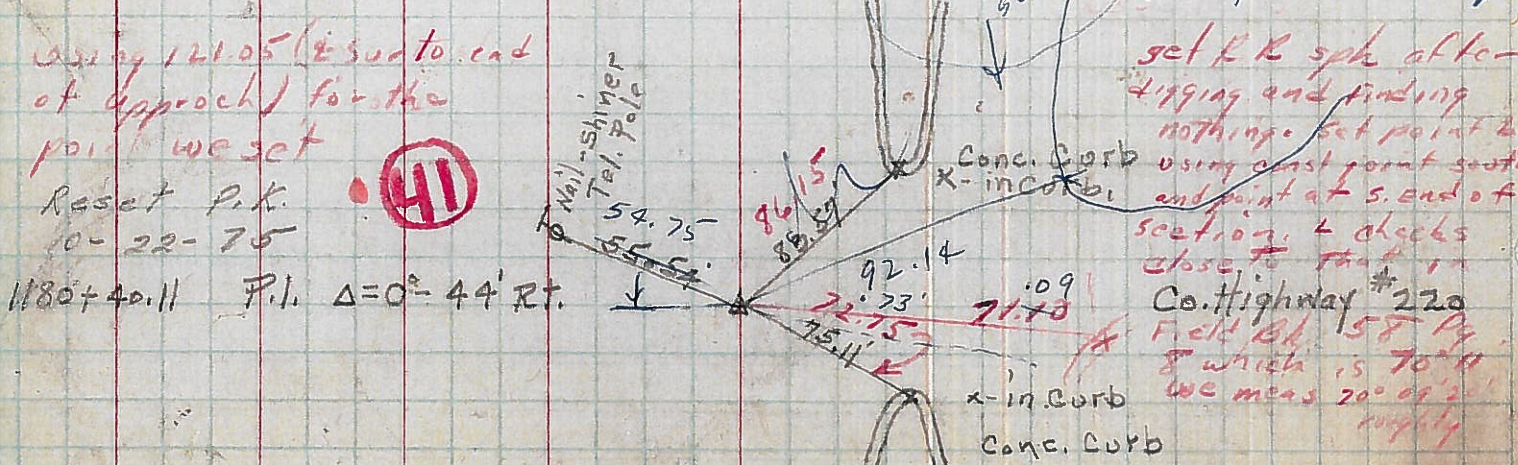
43



42



41



PERSONNEL TITLE PERSONNEL TITLE

COUNTY Sandusky DATE 3-24-50

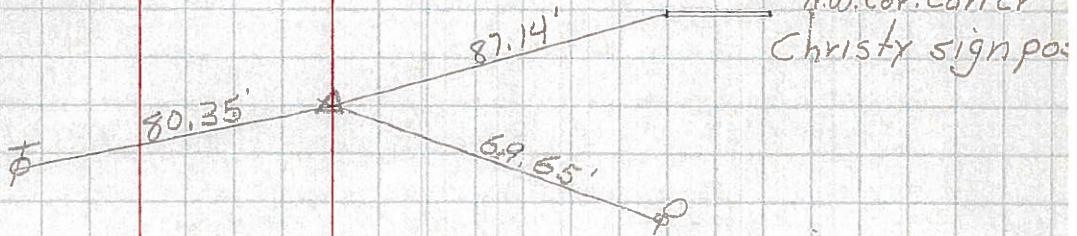
S. R. #20 WEATHER

SEC. J TEMP.

DESCRIPTION LEFT CENTER LINE RIGHT JOB NO.

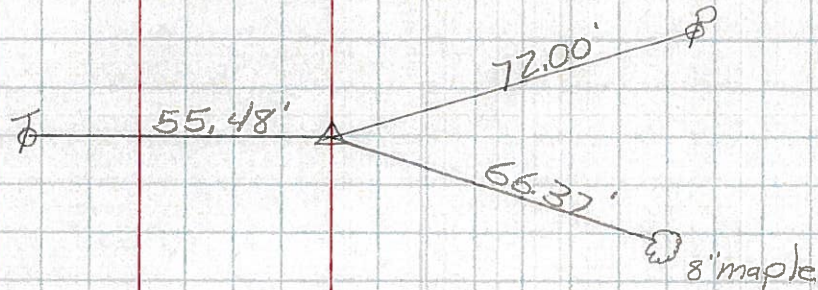
40

P.I. Sta. 1138+55.05
Δ = 0°-27' Lt.



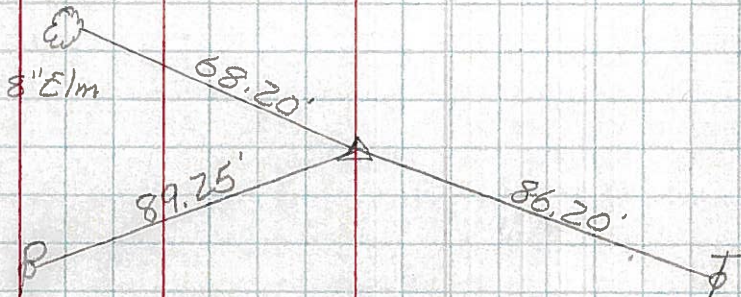
41

P.I. Sta. 1180+40.11
Δ = 0°-44' Rt.



42

P.I. Sta. 1219+28.01
Δ = 1°-29' Rt.



43

P.I. Sta. 1272+89.38
Δ = 1°-58' Lt.

