

O.D.O.T. DISTRICT 2 SURVEY OFFICE (USE ONLY)

PERSONNEL

REFERENCE NO. 44

SHEET 12 OF 19

NOTES HOMAN

DATE 5/11/07

ROUTE US 20

H.C. HUSS

WEATHER SUNNY

COUNTY SANDUSKY

R.C. CANTERBURY

TEMP. 68°

TOWNSHIP GREEN CREEK

SECTION 10

DWG BY NIESE PID 102898

T 4 N R 16 E

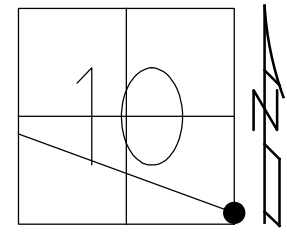
TYPE MONUMENT P.K./WASHER

ON SURFACE - ~~BELOW~~ ON

OFFSET ☉ PAVEMENT 9.0' LT : ~~RT~~

20.8' TO LT EDGE PAVEMENT

STATION: 1325+71



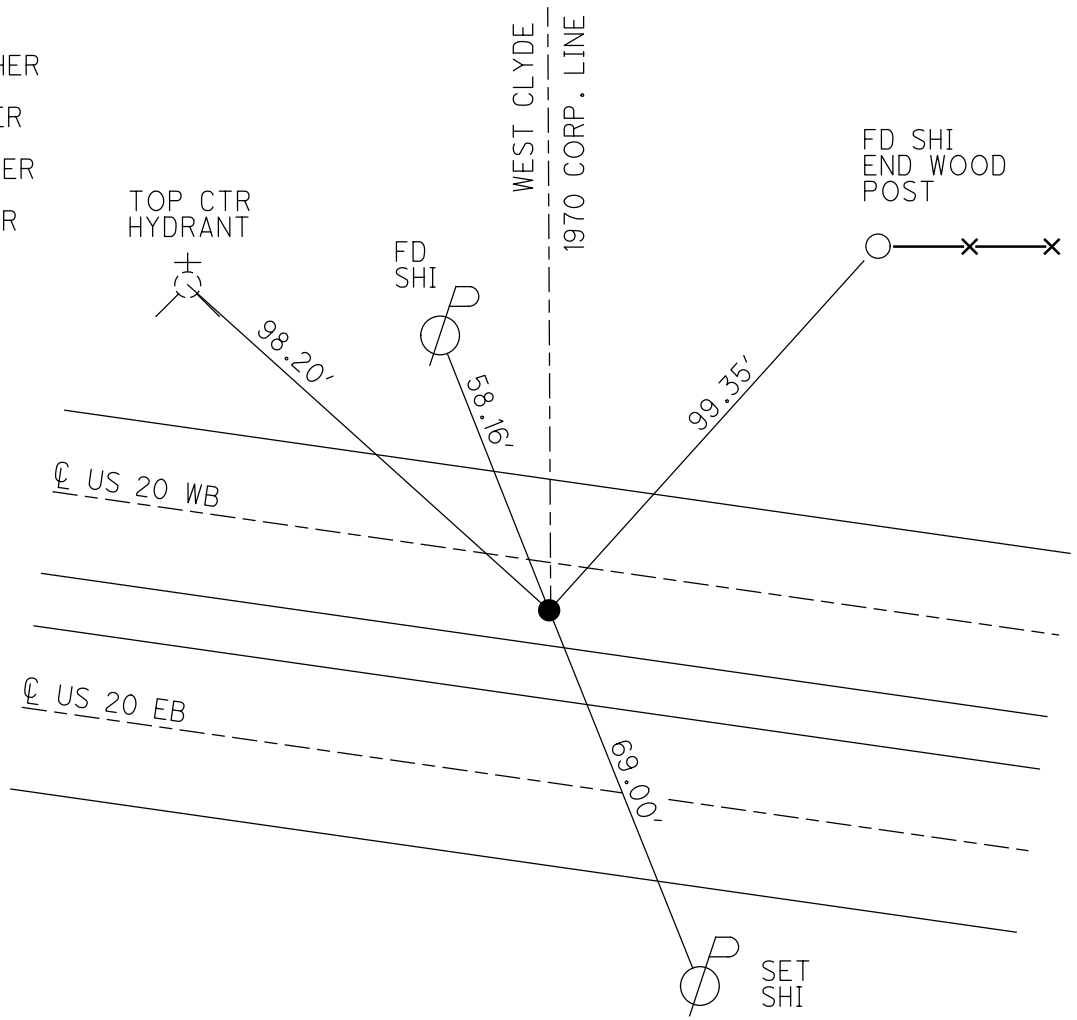
HORZ.DATUM: NAD83(2011)

GEOID: NAVD88 2012A

GRID: NORTHING: 600989.882

EASTING: 1832549.839

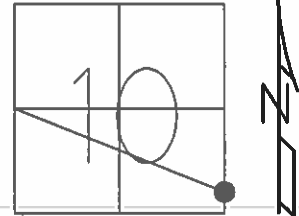
RECORD:
 SET P.K./WASHER
 6/29/87
 FD P.K./WASHER
 5/11/07, DCH
 SET MAG/WASHER
 11/14/07
 FD MAG/WASHER
 REF44
 8/10/18, JLL



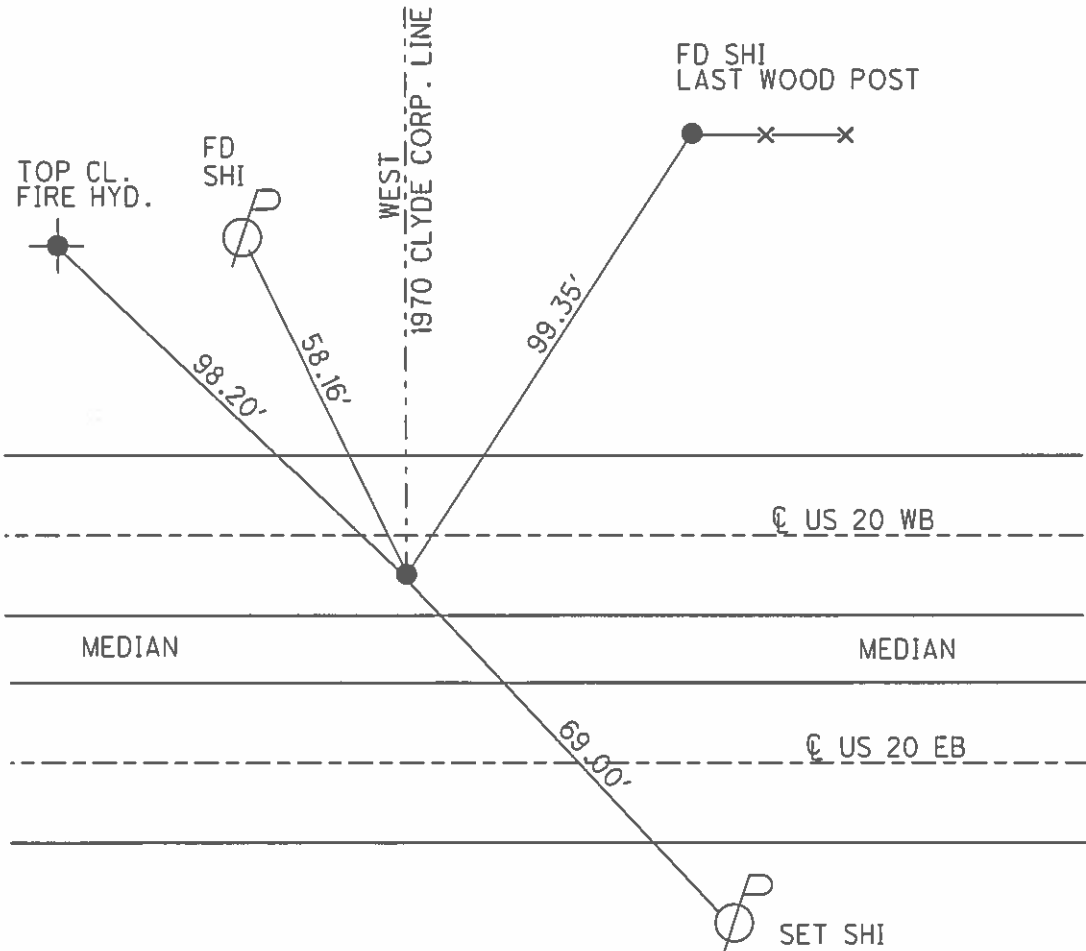
O.D.O.T. DISTRICT 2 SURVEY OFFICE (USE ONLY)

PERSONNEL	REFERENCE NO.	<u>44</u>	SHEET	<u>2</u> OF <u>9</u>	
NOTES	HOMAN	DATE	<u>5/11/07</u>	ROUTE	<u>US 20</u>
H.C.	HUSS	WEATHER	<u>SUNNY</u>	COUNTY	<u>SANDUSKY</u>
R.C.	CANTERBURY	TEMP.	<u>68°</u>	TOWNSHIP	<u>GREEN CREEK</u>
				SECTION	<u>10</u>
				T	<u>4</u> N R <u>16</u> E

TYPE MONUMENT P.K. NAIL/WASHER
 ON SURFACE - ~~BELOW~~ ON _____
 LEFT - ☉ PAV'T - ~~RIGHT~~ 9.0'
20.8' TO LT EDGE PAVEMENT
 S.L.M. 1325+71
 GPS NORTHING: 600989.866 EASTING: 1832549.837



RECORD:
 SET PK/WASHER
 6/29/87
 SET MAG/WASHER
 11/14/07



Resurfaced
1996

Q.D.O.T. DISTRICT 2 SURVEY OFFICE

SHEET 2 OF

County Sandusky S.R. US#20

Date 8 May 85

Township Green Creek

Weather Sunny

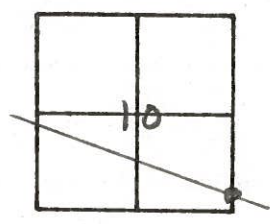
Section 10

Temp. 60°

T N, R E

Personnel 1. Stone
R. Michalek
D. Curtis
J. Householder

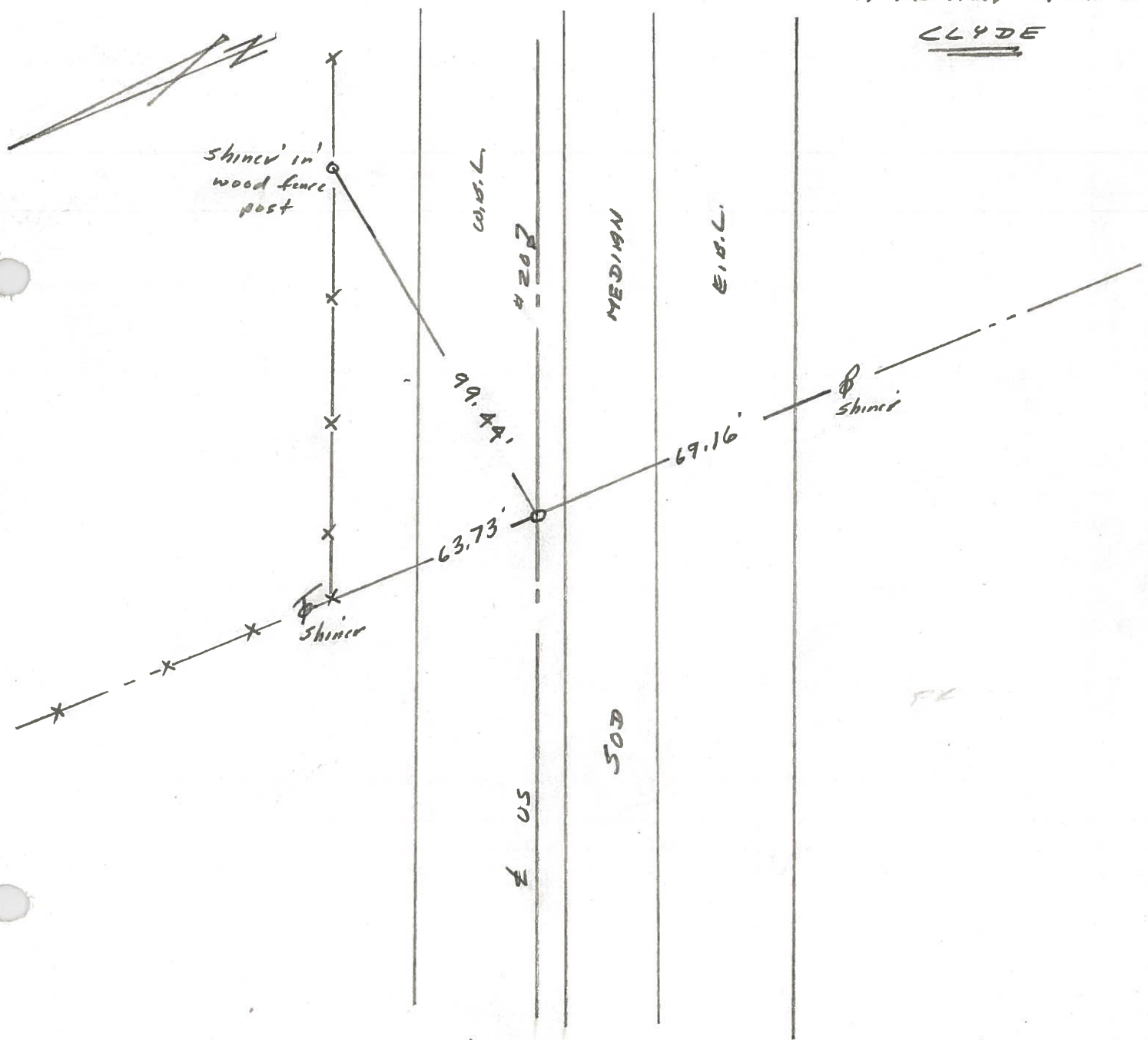
44



1325 + 64

REF. NO.
Set PK Nail 8/25/86

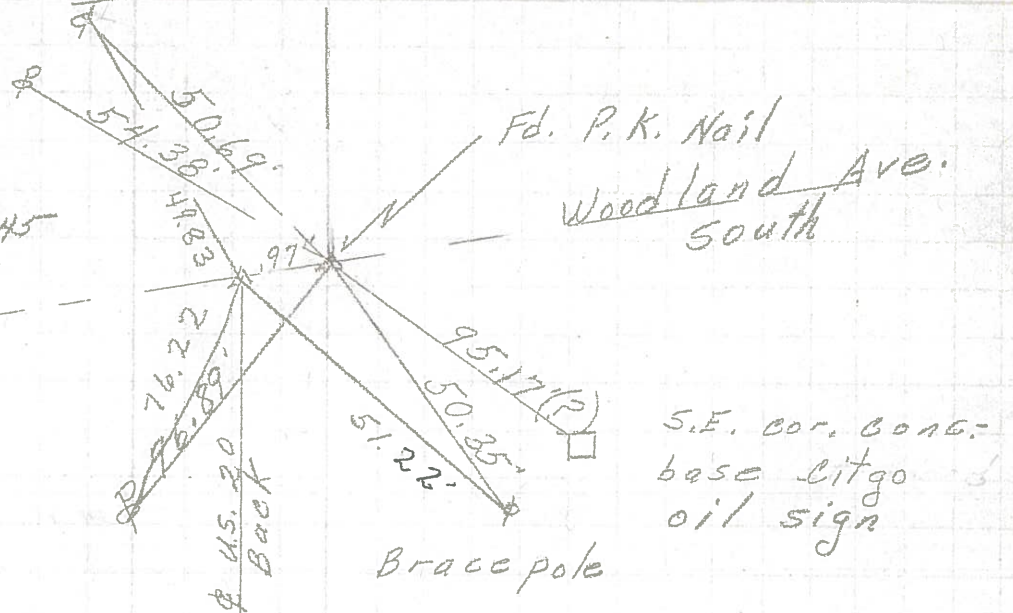
CLYDE



PERSONNEL	TITLE	PERSONNEL	TITLE	COUNTY	DATE	S. R.	WEATHER	TEMP.
Schneider		Vinson		Sandusky	1-24-72	U.S.# 20	Cloudy	35°
Mosser								
Barbour								
Geyman								
DESCRIPTION <u>Clyde</u>				SEC.	11 & 14	JOB NO. _____		
LEFT		CENTER LINE		RIGHT				

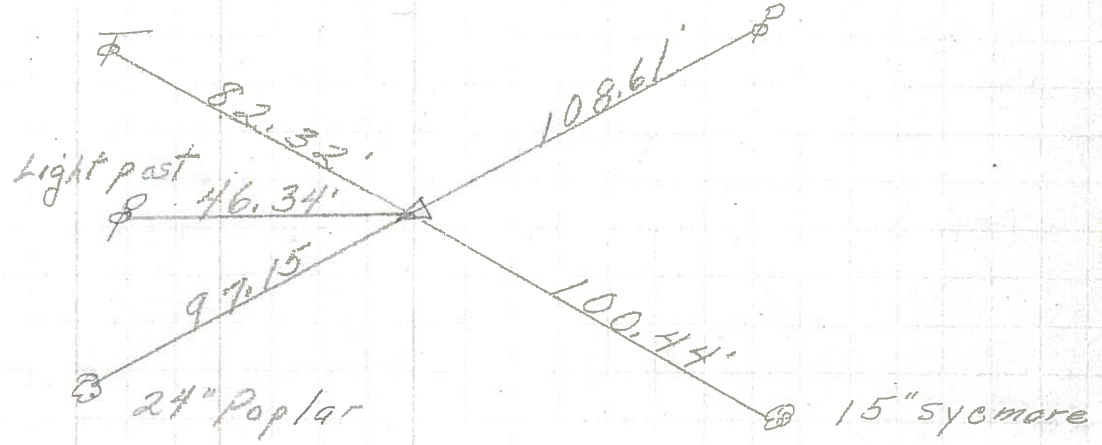
50

P.I. Ahd. 1307+29.45
 P.I. BK. 1307+29.13
 Fd. P.K. Nail
 Old Corp. Limits



43

P.I. 1272+89.38
 Fd. P.K. Nail
 4" down



44

P.O.T.
 Fd. P.K. Nail

