

O.D.O.T. DISTRICT 2 SURVEY OFFICE (USE ONLY)

PERSONNEL

REFERENCE NO. 50

SHEET 13 OF 19

NOTES HOMAN  
 H.C. HUSS  
 R.C. CANTERBURY

DATE 5/21/07  
 WEATHER CLOUDY  
 TEMP. 60°

ROUTE US 20  
 COUNTY SANDUSKY  
 TOWNSHIP GREEN CREEK  
 SECTION 14  
 T 4 N R 16 E

DWG BY NIESE PID \_\_\_\_\_

TYPE MONUMENT P.K./WASHER

ON SURFACE - ~~BELOW~~ ON

OFFSET  $\text{C}$  PAVEMENT ON LT : RT

36.0' TO LT EDGE PAVEMENT

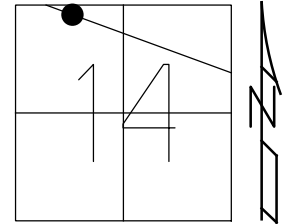
STATION: 1342+19

HORZ.DATUM: \_\_\_\_\_

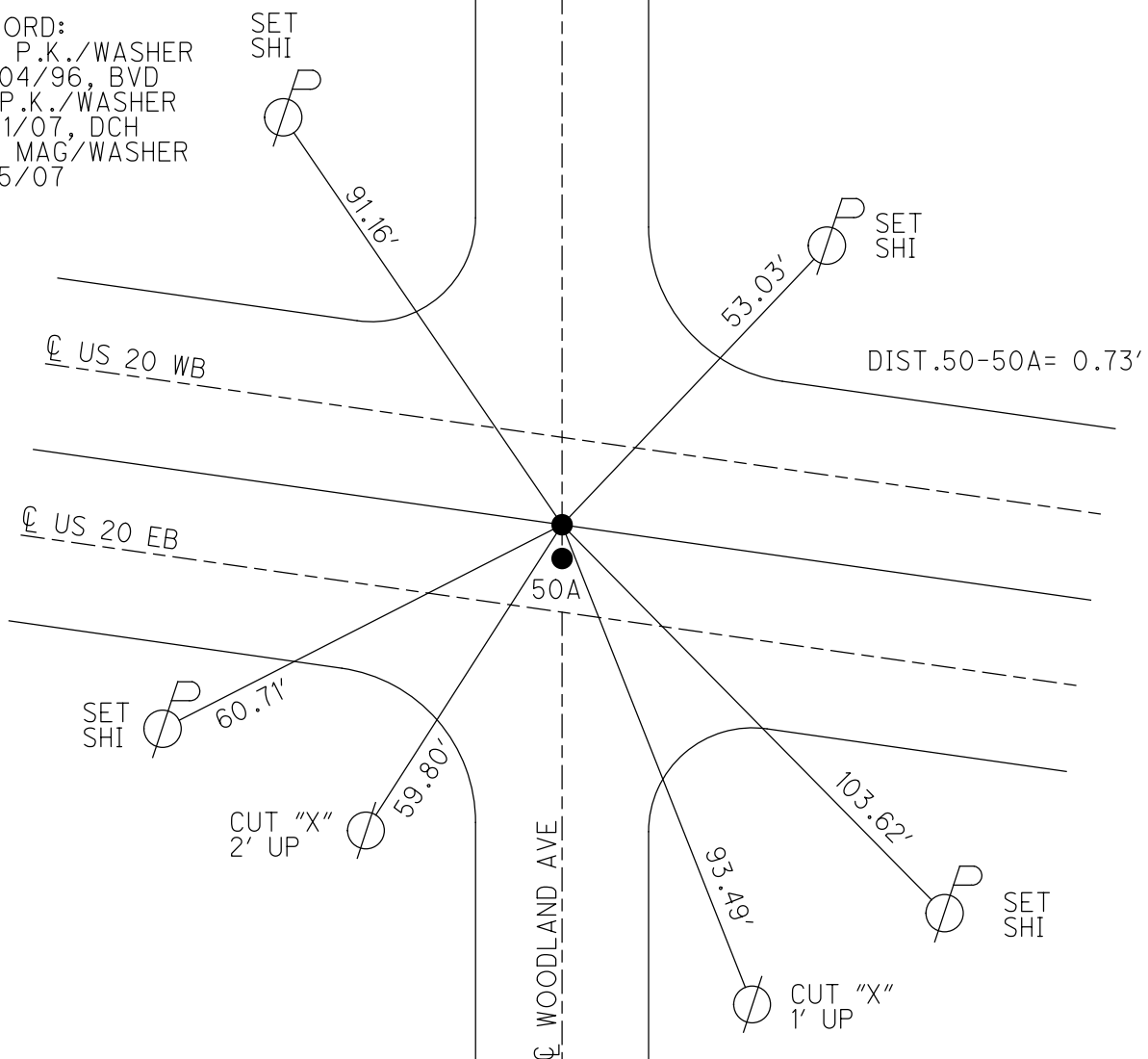
GEOID: \_\_\_\_\_

GRID: NORTHING: 600434.161

EASTING: 1834105.946



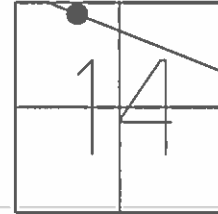
RECORD:  
 SET P.K./WASHER  
 10/04/96, BVD  
 FD P.K./WASHER  
 5/21/07, DCH  
 SET MAG/WASHER  
 11/15/07



O.D.O.T. DISTRICT 2 SURVEY OFFICE (USE ONLY)

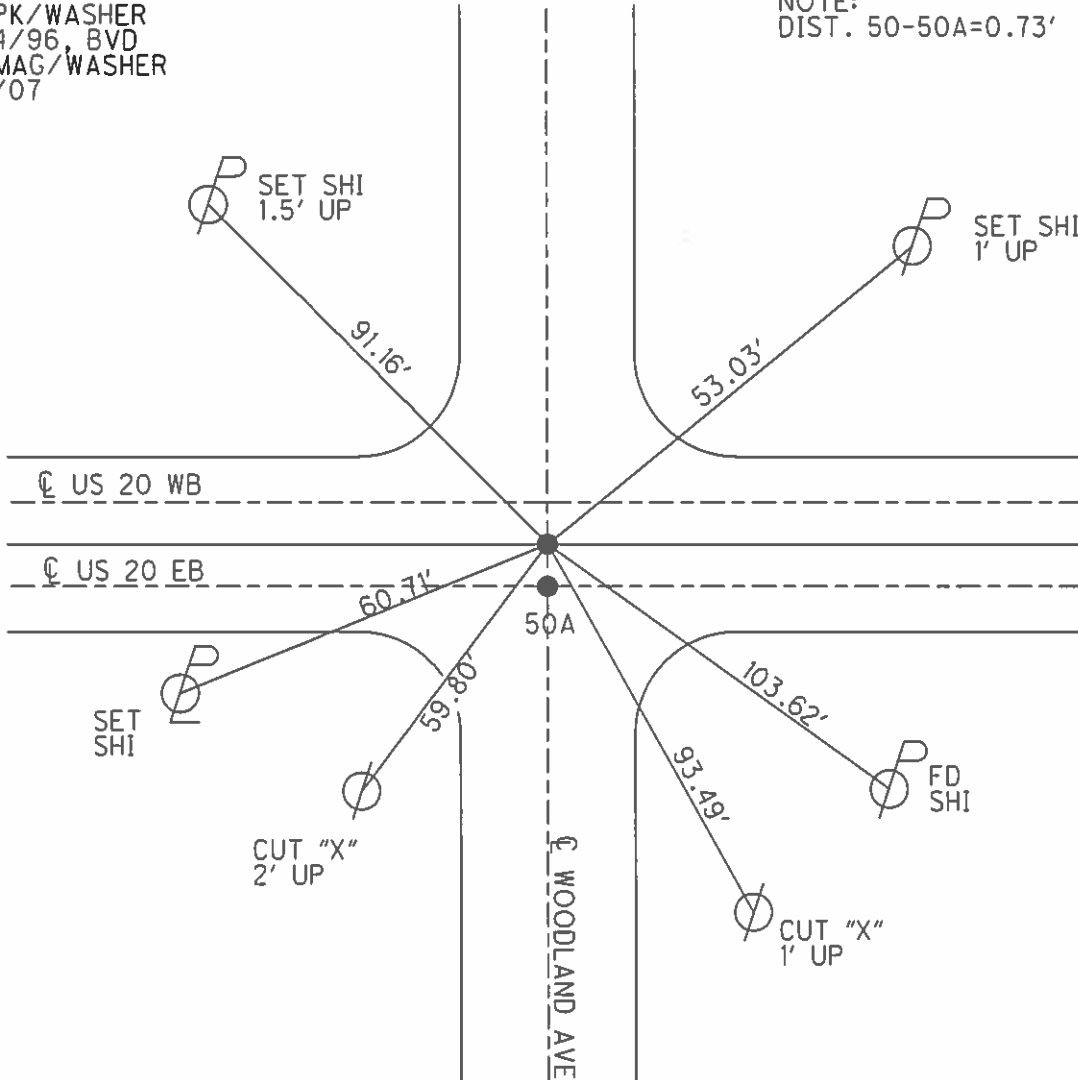
PERSONNEL \_\_\_\_\_ REFERENCE NO. 50 SHEET 3 OF 9  
 NOTES HOMAN DATE 5/21/07 ROUTE US 20  
 H.C. HUSS WEATHER CLOUDY COUNTY SANDUSKY  
 R.C. CANTERBURY TEMP. 60° TOWNSHIP GREEN CREEK  
 SECTION 14  
 T 4 N R 16 E

TYPE MONUMENT P.K. NAIL  
 ON SURFACE - ~~BELOW~~ ON \_\_\_\_\_  
~~LEFT~~ - ☉ PAV'T - ~~RIGHT~~ ON ☉ \_\_\_\_\_  
36' TO LT EDGE PAVEMENT  
 S.L.M. 1342+19  
 GPS NORTHING: 600434.161 EASTING: 1834105.946



RECORD:  
 SET PK/WASHER  
 10/04/96, BVD  
 SET MAG/WASHER  
 11/15/07

NOTE:  
 DIST. 50-50A=0.73'



O.D.O.T. DISTRICT 2 SURVEY OFFICE (USE ONLY)

PERSONNEL \_\_\_\_\_

REFERENCE NO. 50

SHEET 3 OF 9

NOTES HOMAN

DATE 5-21-07

ROUTE US 20

H.C. HUSS

WEATHER CLOUDY

COUNTY SANDUSKY

R.C. CANTERBURY

TEMP. 60°

TOWNSHIP GREEN CREEK

SECTION 14

T 4 N R 16 E

TYPE MONUMENT "A"=FD. PK

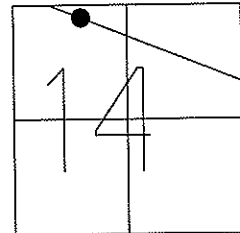
ON SURFACE - ~~BELOW~~ ON SURFACE

~~LEFT - RIGHT~~ C PAV'T - RIGHT ON CL.

36' TO LT. EDGE PAVEMENT

S.L.M. 1342+19 (SV1)

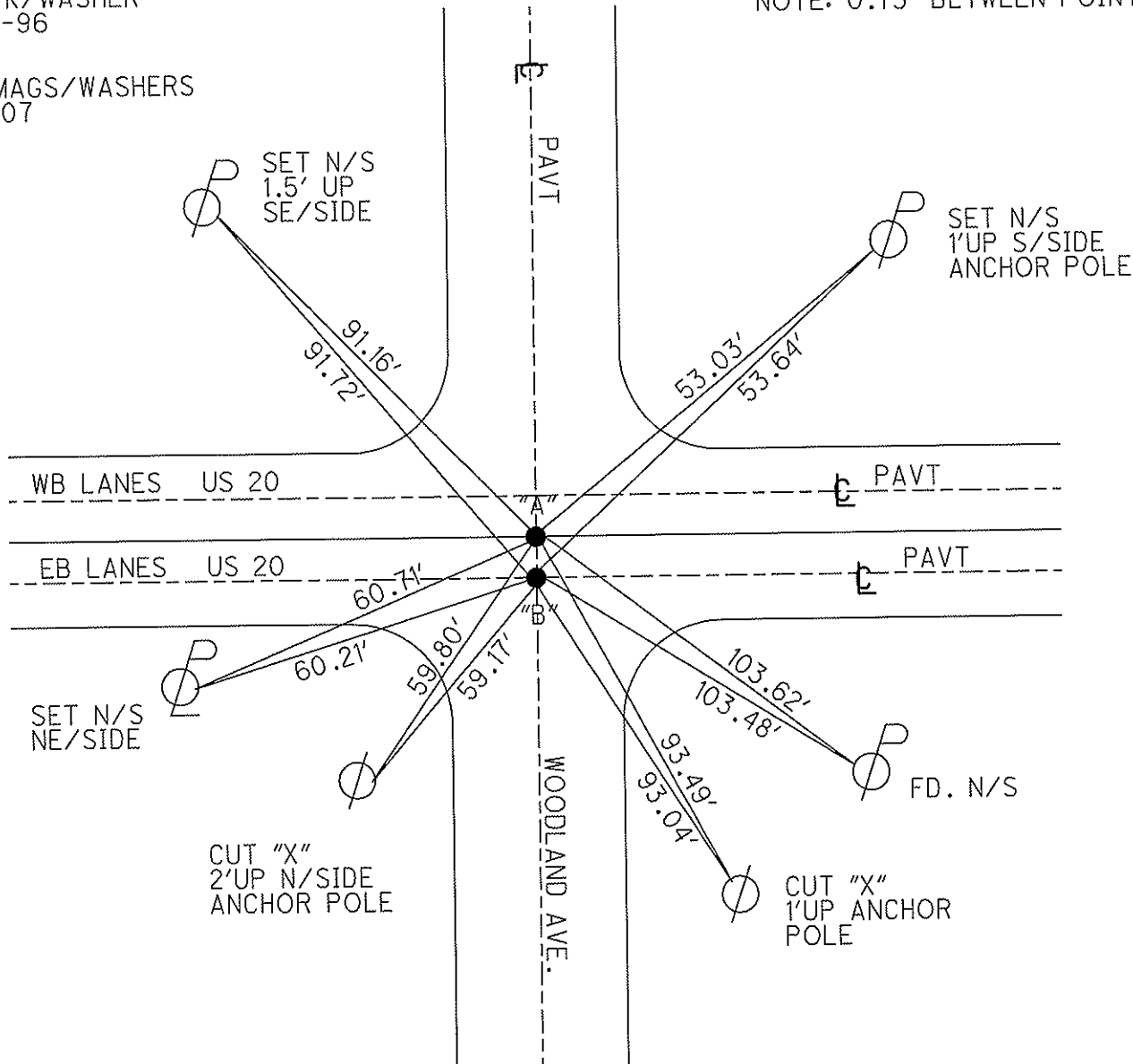
GPS Northing: 600434.161 Easting: 1834105.946



SET PK/WASHER  
10-04-96  
BVD

SET MAGS/WASHERS  
11-15-07

NOTE: 0.73' BETWEEN POINTS



# O.D.O.T. DISTRICT 2 SURVEY OFFICE

PERSONNEL \_\_\_\_\_

REFERENCE NO. \_\_\_\_\_

SHEET 1 OF \_\_\_\_\_

NOTES HOFFMAN

H.C. BARNHISEL

R.C. LOEHRKE

DATE 10-25-88

WEATHER P. CLEAR

TEMP. 40°

ROUTE US 20

COUNTY SANDUSKY

TOWNSHIP GREEN CREEK

SECTION 14

T. 4 N. R. 16 E

TYPE MONUMENT P.K. Nail <sup>Set 3m R.R. Spike- 7-5-89</sup>

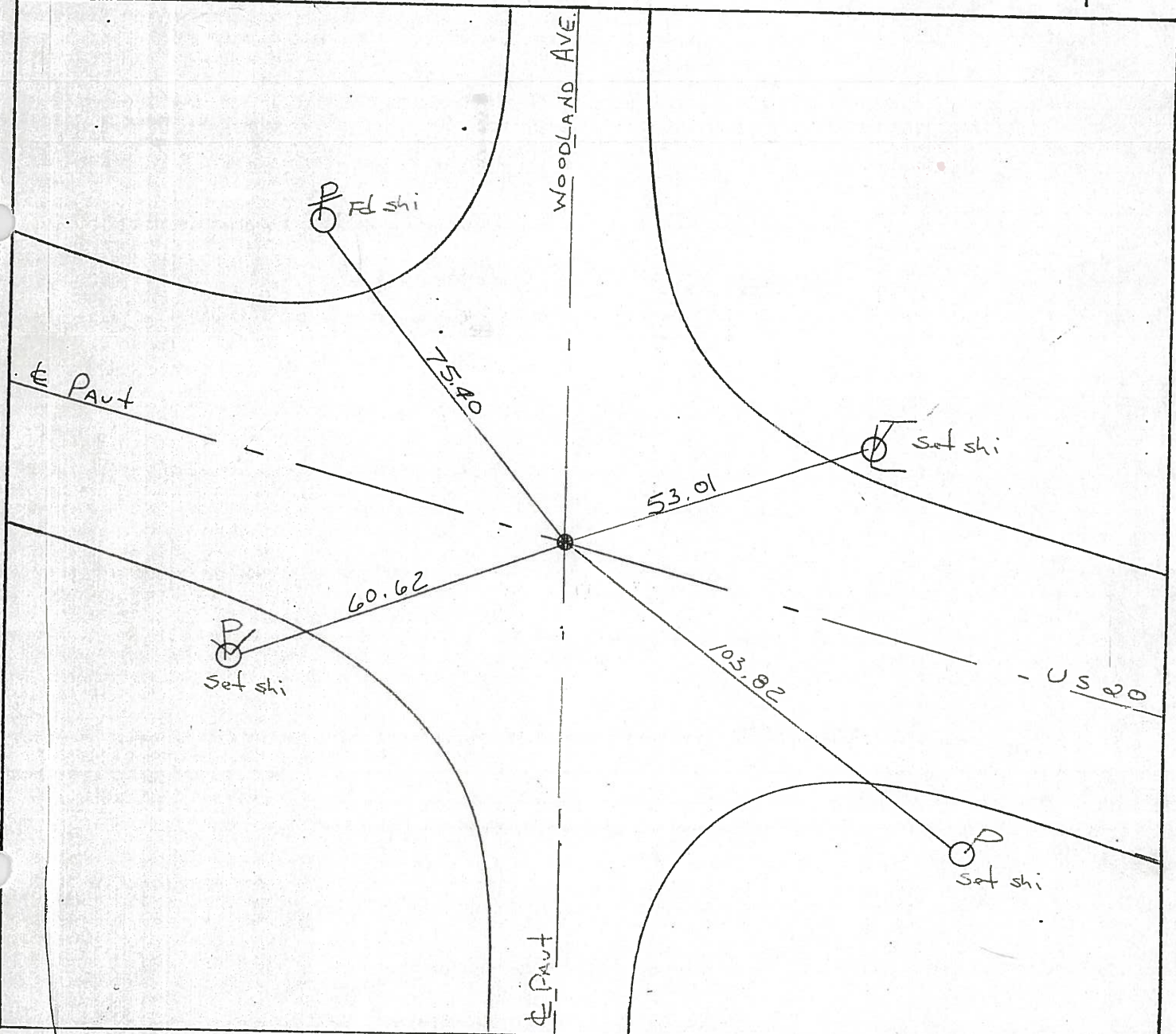
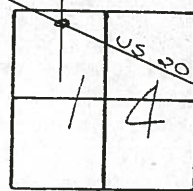
ON SURFACE - BELOW YES

LEFT- & PAVT. - RIGHT YES

TO EDGE PAVEMENT

S.L.M. 1342 + 19

50



# O.D.O.T. DISTRICT 2 SURVEY OFFICE

PERSONNEL \_\_\_\_\_

REFERENCE NO. \_\_\_\_\_

SHEET 1 OF \_\_\_\_\_

NOTES HOFFMAN

H.C. BARNHISEL

DATE 10-25-88

ROUTE US 20

R.C. LOHRICE

WEATHER P. CLEAR

COUNTY SANDUSKY

TEMP. 40°

TOWNSHIP GREEN CREEK

SECTION 14

T. 4 N. R. 16 E

TYPE MONUMENT P.K. Nail

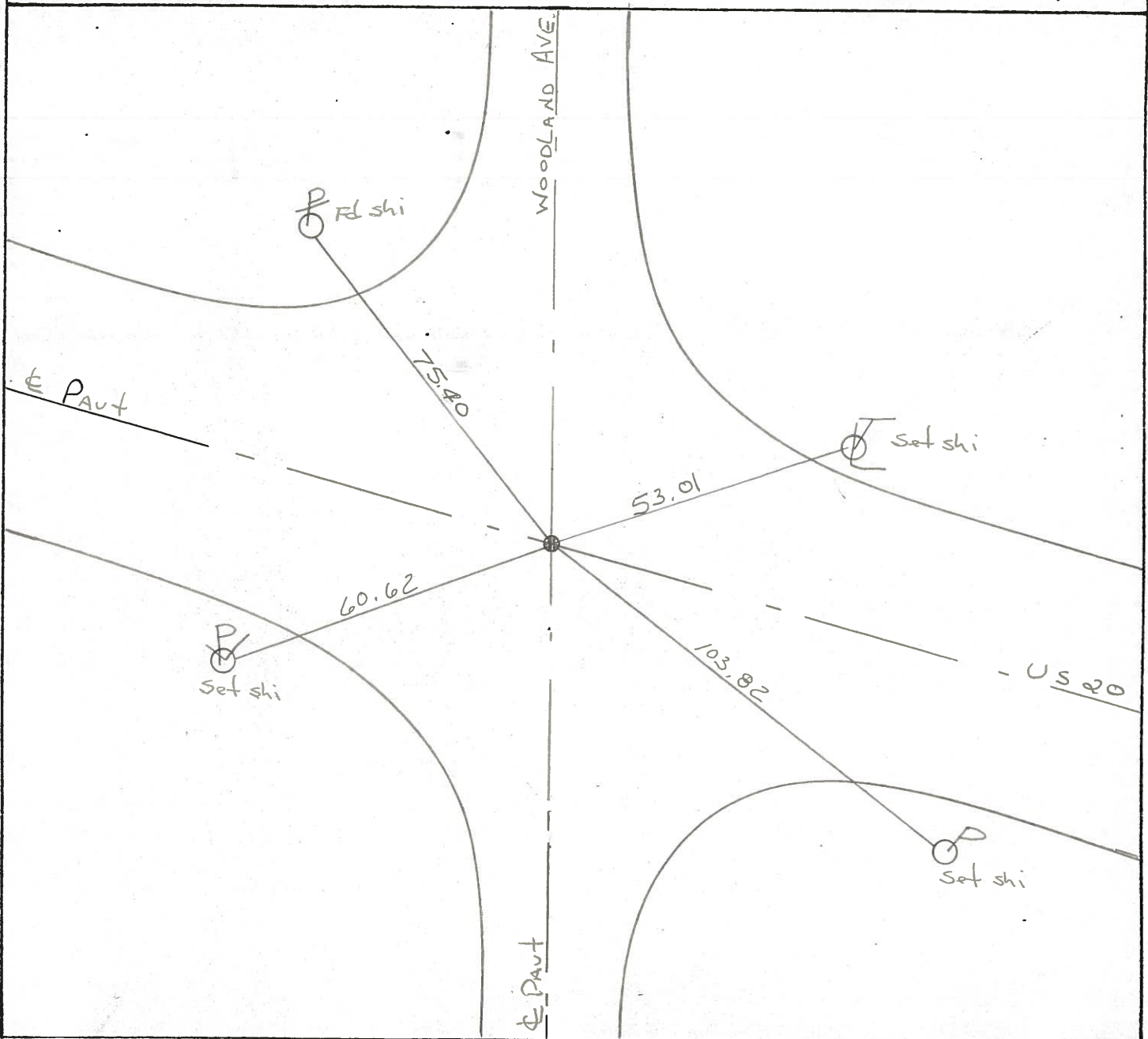
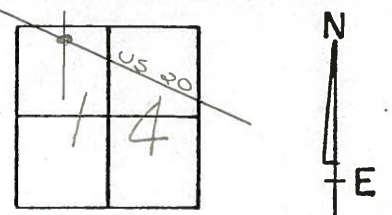
ON SURFACE - BELOW YES

LEFT- & PAV'T. - RIGHT YES

TO \_\_\_\_\_ EDGE PAVEMENT

S.L.M. 1342 + 19

50



County Sandusky S.R. US#20

Date 8 May 85

Township Green Creek

Weather Sunny

Section 14

Temp. 61°

T\_N, R\_E

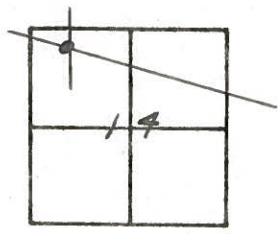
Personnel I. Stone

R. Michalak

D. Curtis

J. Householder

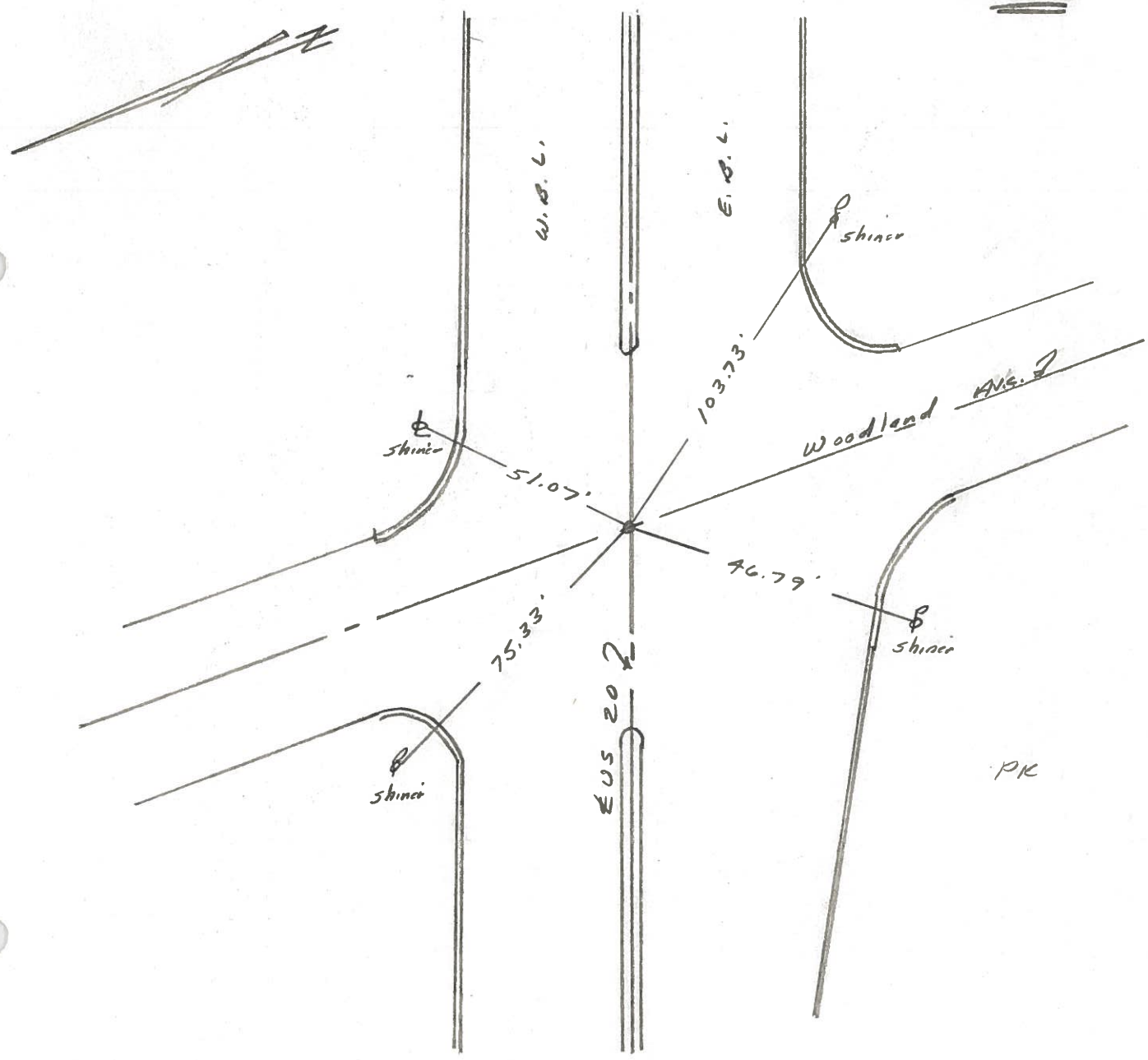
50



1342+19

REF. NO.  
Set PK Nail 8/25/86

CLYDE



PERSONNEL TITLE PERSONNEL TITLE

COUNTY Sandusky

DATE 4-7-71  
3-24-50

S. R. #20

WEATHER

SEC. J

TEMP.

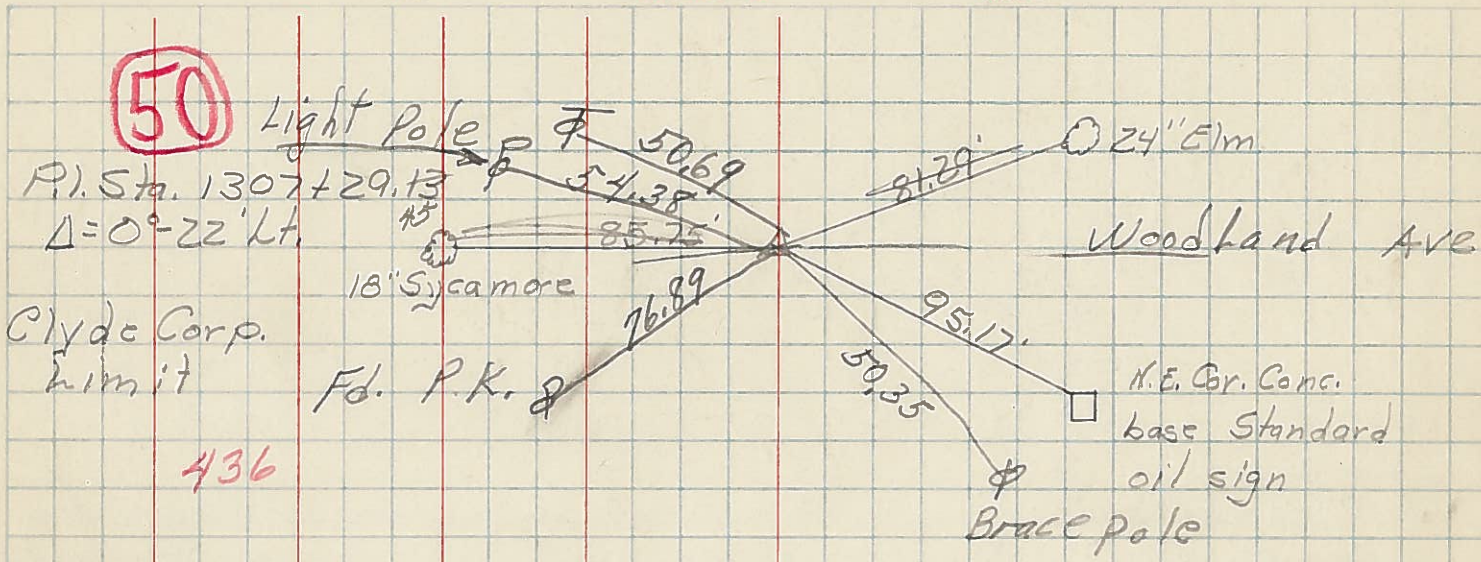
DESCRIPTION

LEFT

CENTER LINE

RIGHT

JOB NO.



PERSONNEL TITLE PERSONNEL TITLE

Schneider \_\_\_\_\_ Vinson \_\_\_\_\_

COUNTY Sandusky DATE 1-24-72

Mosser \_\_\_\_\_

S. R. U.S.# 20 WEATHER Cloudy

Barbour \_\_\_\_\_

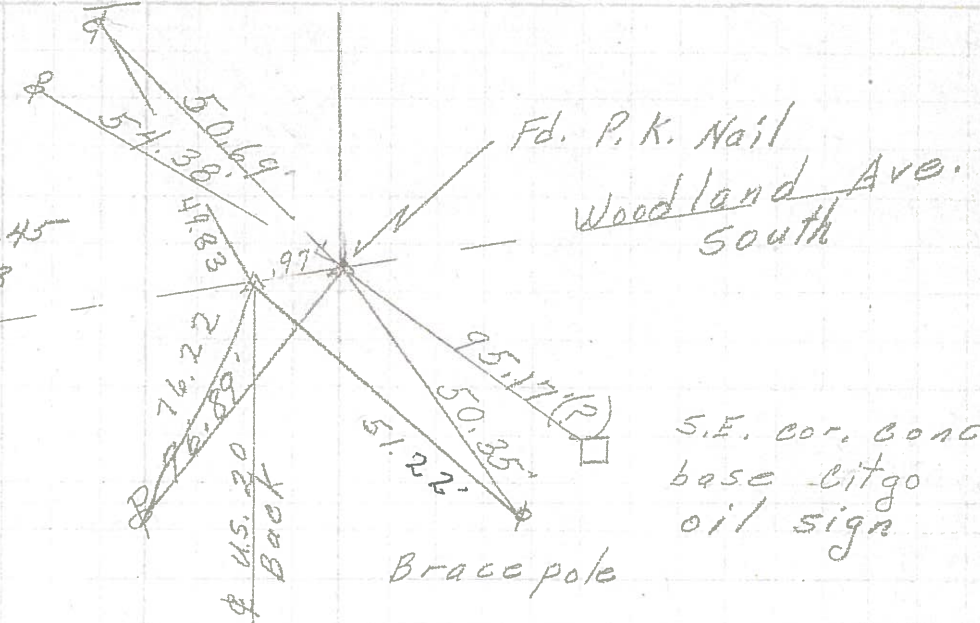
SEC. 11 & 14 TEMP. 35°

Geyman \_\_\_\_\_

DESCRIPTION Clyde LEFT CENTER LINE RIGHT JOB NO. \_\_\_\_\_

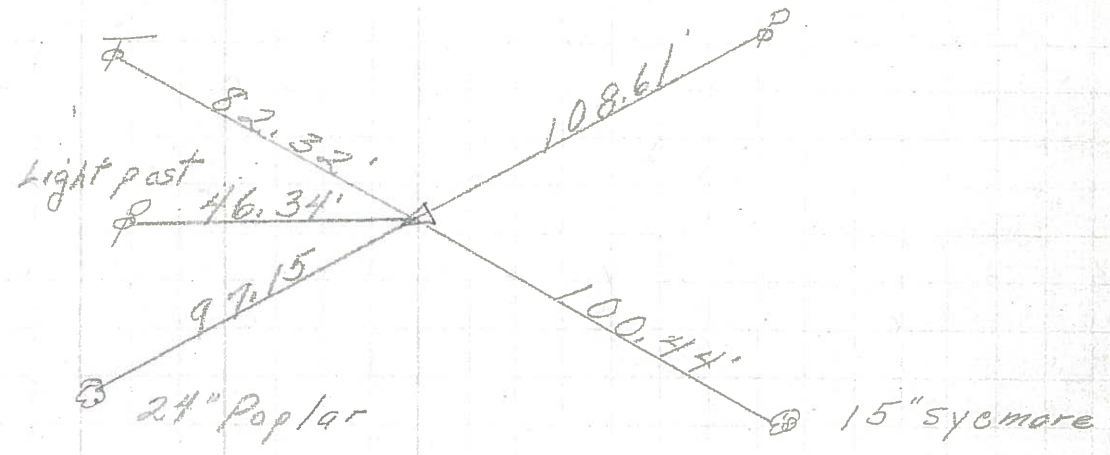
50

P.I. Ahd. 1307+29.45  
P.I. BK. 1307+29.13  
Fd. P.K. Nail  
Old Corp. Limits



43

P.I. 1272+89.38  
Fd. P.K. Nail  
4" down



44

P.O.T.  
Fd. P.K. Nail

