

O.D.O.T. DISTRICT 2 SURVEY OFFICE (USE ONLY)

PERSONNEL

REFERENCE NO. 50A

SHEET 14 OF 19

NOTES HOMAN

DATE 5/21/07

ROUTE US 20

H.C. HUSS

WEATHER CLOUDY

COUNTY SANDUSKY

R.C. CANTERBURY

TEMP. 60°

TOWNSHIP GREEN CREEK

DWG BY NIESE

PID _____

SECTION 14

T 4 N R 16 E

TYPE MONUMENT P.K. NAIL

ON SURFACE - ~~BELOW~~ ON

OFFSET Q PAVEMENT 0.73' ~~LT~~ : RT

36.73' TO LT EDGE PAVEMENT

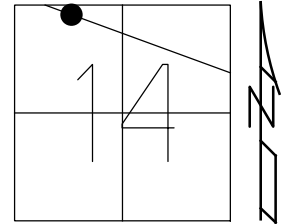
STATION: 1342+19

HORZ.DATUM: _____

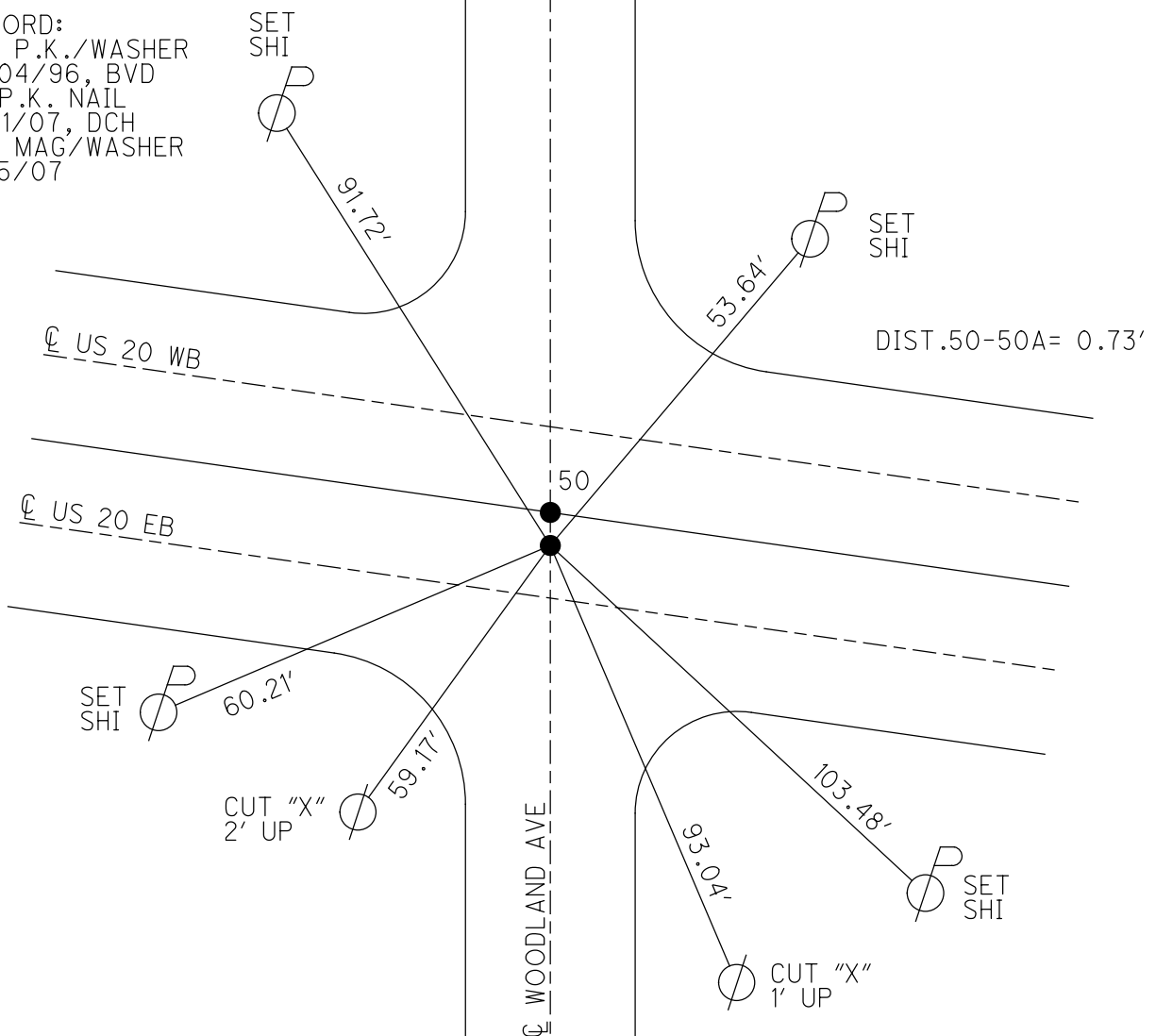
GEOID: _____

GRID: NORTHING: 600433.472

EASTING: 1834105.666



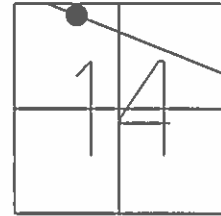
RECORD:
 SET P.K./WASHER
 10/04/96, BVD
 FD P.K. NAIL
 5/21/07, DCH
 SET MAG/WASHER
 11/15/07



O.D.O.T. DISTRICT 2 SURVEY OFFICE (USE ONLY)

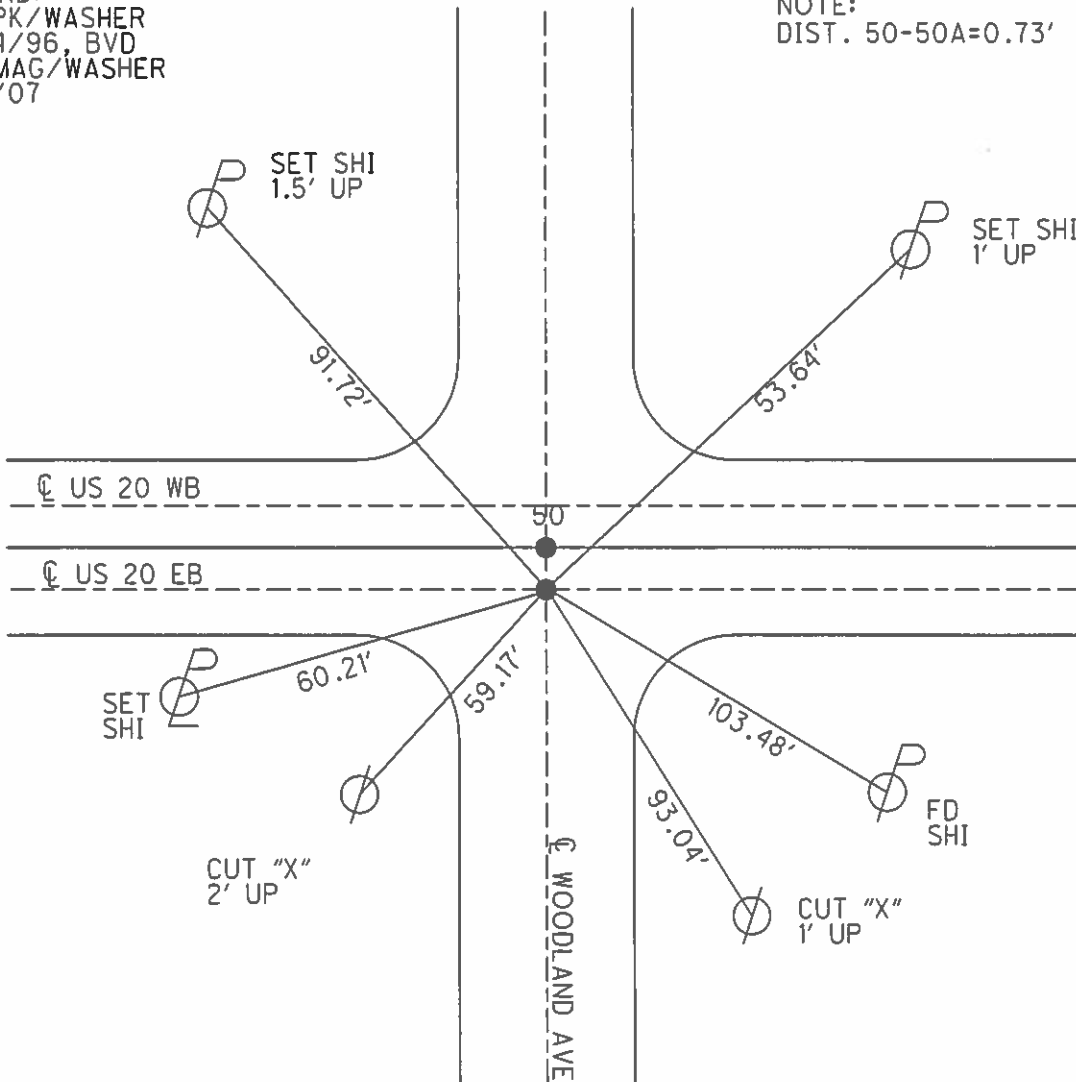
PERSONNEL _____ REFERENCE NO. 50A SHEET 4 OF 9
 NOTES HOMAN DATE 5/21/07 ROUTE US 20
 H.C. HUSS WEATHER CLOUDY COUNTY SANDUSKY
 R.C. CANTERBURY TEMP. 60° TOWNSHIP GREEN COOK
 SECTION 14
 T 4 N R 16 E

TYPE MONUMENT P.K. NAIL
 ON SURFACE - ~~BELOW~~ ON
~~LEFT~~ - Q PAV'T - RIGHT 0.73'
36.73' TO LT EDGE PAVEMENT
 S.L.M. 1342+19
 GPS NORTHING: 600433.472 EASTING: 1834105.666



RECORD:
 SET PK/WASHER
 10/04/96, BVD
 SET MAG/WASHER
 11/15/07

NOTE:
 DIST. 50-50A=0.73'



O.D.O.T. DISTRICT 2 SURVEY OFFICE (USE ONLY)

PERSONNEL

REFERENCE NO. 50A

SHEET 4 OF 9

NOTES HOMAN

DATE 5-21-07

ROUTE US 20

H.C. HUSS

WEATHER CLOUDY

COUNTY SANDUSKY

R.C. CANTERBURY

TEMP. 60°

TOWNSHIP GREEN CREEK

SECTION 14

T 4 N R 16 E

TYPE MONUMENT "B"=FD.PK

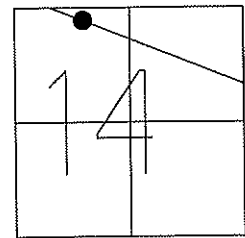
ON SURFACE - ~~BELOW~~ ON SURFACE

~~LEFT~~ - C PAV'T - RIGHT 073' RT. CL.

36.73' TO LT. EDGE PAVEMENT

S.L.M. 1342+19 (SV2)

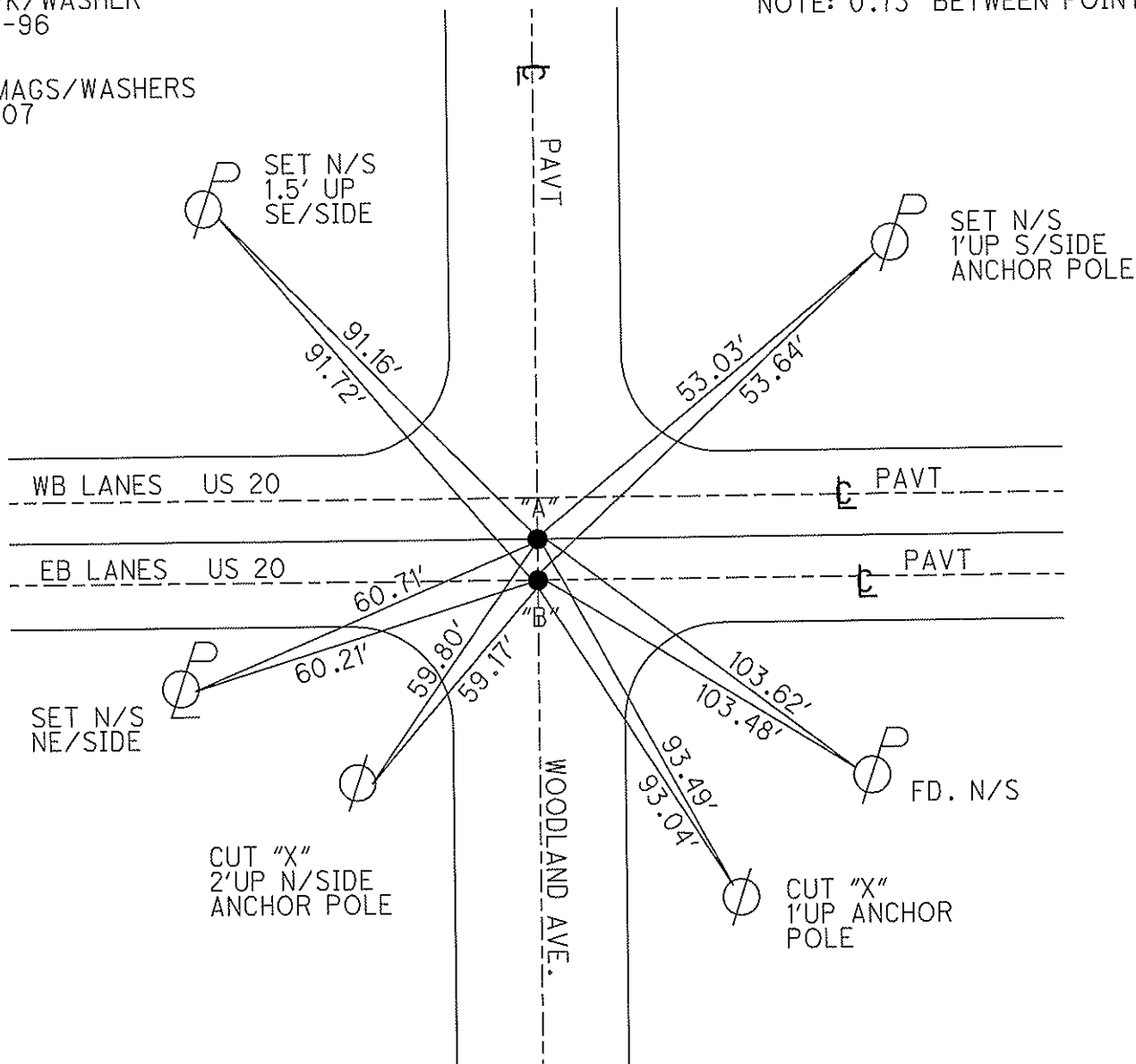
GPS Northing: 600433.472 Easting: 1834105.666



SET PK/WASHER
10-04-96
BVD

NOTE: 0.73' BETWEEN POINTS

SET MAGS/WASHERS
11-15-07



PERSONNEL TITLE PERSONNEL TITLE

COUNTY Sandusky

DATE Feb, 1961

S. R. #20

WEATHER

SEC. Clyde (Pt)

TEMP.

DESCRIPTION

LEFT

CENTER LINE

RIGHT

JOB NO.

50A

18" Sycamore

86.60' N.E.

81.51' S.E.

20" Elm

Sta. 304+24

X-in brick pavement on E.W. Corp.

Line of Clyde

#436

Ties gone

51

8" maple 64.02' N.E.

37.50' S.E.

Sta. 317+84.86

Shiner on E of R/W

#437

55.04' S.W.

10" maple

51A

Sta. 327+51.15

Shiner on E of R/W

Birdseye St

#438

25.09' N.E.

42.55' S.E.

48.70' S.W.

51B

Sta. 331+40.13

Shiner on E of R/W

Nelson St.

#439

27.83' N.E.

45.34' N.W.

24.75' S.W.

8" maple