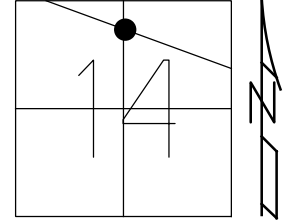


O.D.O.T. DISTRICT 2 SURVEY OFFICE (USE ONLY)

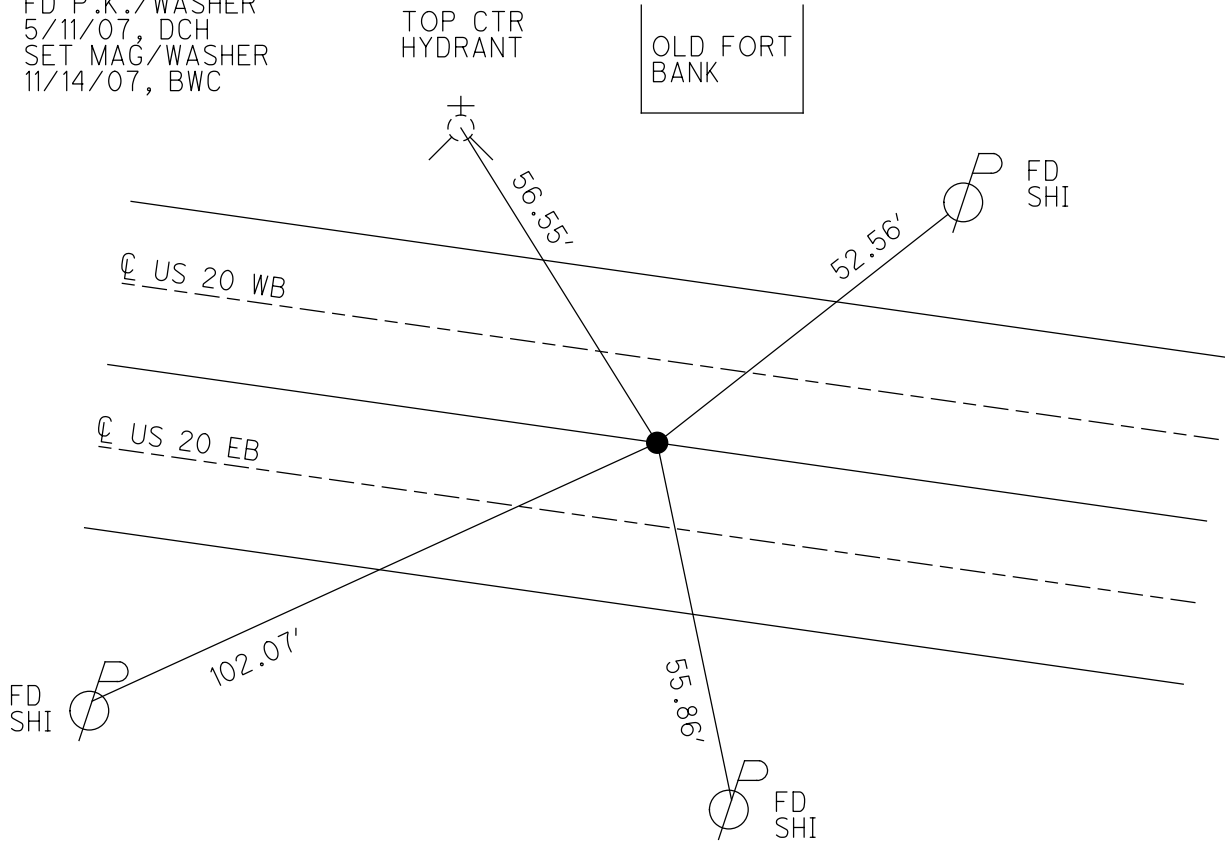
PERSONNEL _____ REFERENCE NO. 51 SHEET 15 OF 19
 NOTES HOMAN DATE 5/11/07 ROUTE US 20
 H.C. HUSS WEATHER SUNNY COUNTY SANDUSKY
 R.C. CANTERBURY TEMP. 70° TOWNSHIP GREEN CREEK
 DWG BY NIESE PID _____ SECTION 14
 T 4 N R 16 E

TYPE MONUMENT P.K./WASHER
 ON SURFACE - ~~BELOW~~ ON
 OFFSET ☉ PAVEMENT ON LT : RT
35.7' TO RT EDGE PAVEMENT
 STATION: 1355+76



HORIZ.DATUM: _____ GEOID: _____
 GRID: NORTHING: 599985.054 EASTING: 1835390.084

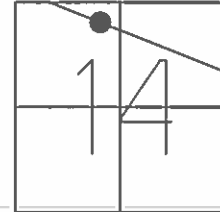
RECORD:
 SET P.K./WASHER
 10/04/96, BVD
 FD P.K./WASHER
 5/11/07, DCH
 SET MAG/WASHER
 11/14/07, BWC



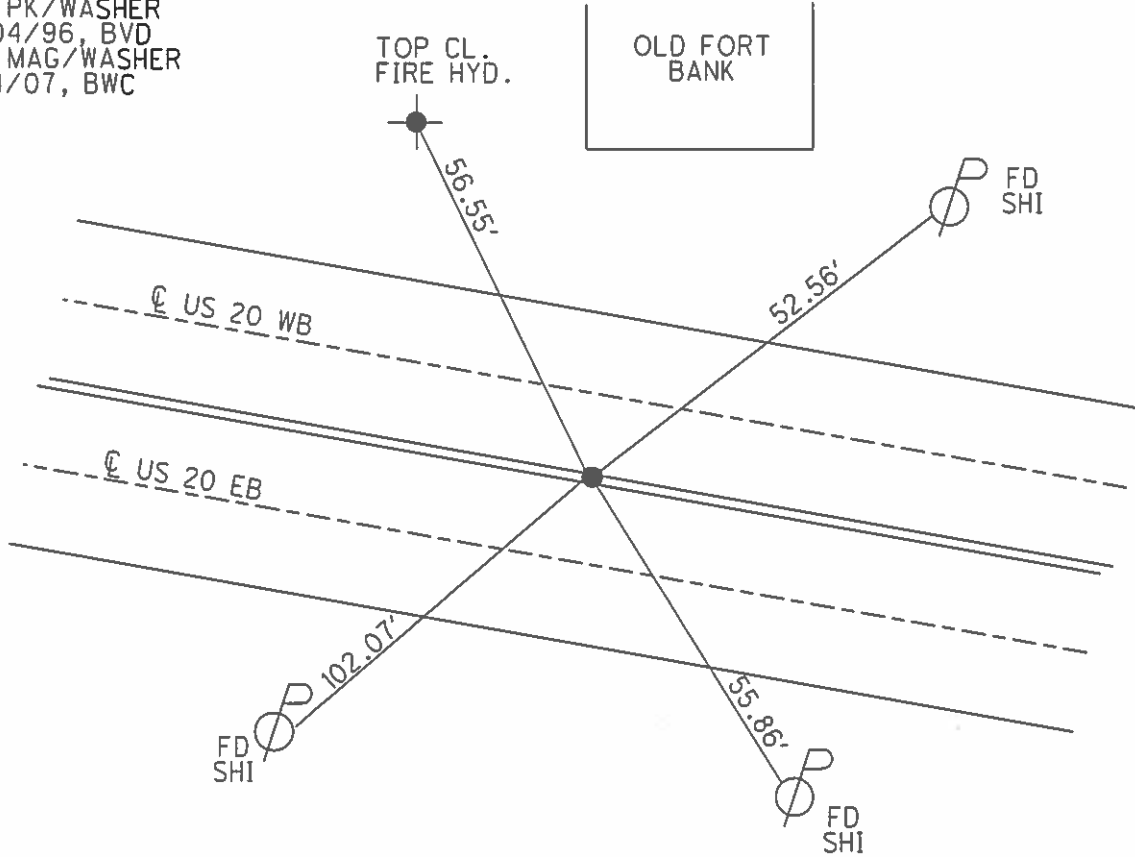
O.D.O.T. DISTRICT 2 SURVEY OFFICE (USE ONLY)

| | | | | | | |
|-----------|---------------|-----------|----------------|----------|--------------------|----------|
| PERSONNEL | REFERENCE NO. | <u>51</u> | SHEET | <u>5</u> | OF | <u>9</u> |
| NOTES | HOMAN | DATE | <u>5/11/07</u> | ROUTE | <u>US 20</u> | |
| H.C. | HUSS | WEATHER | <u>SUNNY</u> | COUNTY | <u>SANDUSKY</u> | |
| R.C. | CANTERBURY | TEMP. | <u>70°</u> | TOWNSHIP | <u>GREEN CREEK</u> | |
| | | | | SECTION | <u>14</u> | |
| | | | | T | <u>4</u> | N |
| | | | | R | <u>16</u> | E |

TYPE MONUMENT P.K. NAIL/WASHER
 ON SURFACE - ~~BELOW~~ ON _____
~~LEFT~~ - ℄ PAV'T - ~~RIGHT~~ ON ℄ _____
35.7' TO RT EDGE PAVEMENT
 S.L.M. 1355+76
 GPS NORTHING: 599985.054 EASTING: 1835390.084



RECORD:
 SET PK/WASHER
 10/04/96, BVD
 SET MAG/WASHER
 11/14/07, BWC



O.D.O.T. DISTRICT 2 SURVEY OFFICE

PERSONNEL _____

REFERENCE NO. _____

SHEET 2 OF _____

NOTES HOFFMAN

H.C. BARNHISEL

R.C. LOHRKE

DATE 10-25-88

WEATHER P. CLEAR

TEMP. 40°

ROUTE US 20

COUNTY SANDUSKY

TOWNSHIP GREEN CREEK

SECTION 14

T 4 N R 16 E

TYPE MONUMENT ^{Reset} SMALL R.R. SPIKE 7-5-89

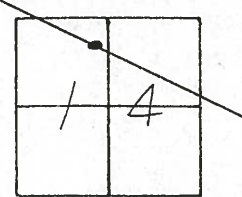
ON SURFACE - BELOW YES

LEFT- & PAV'T. - ~~RIGHT~~ YES

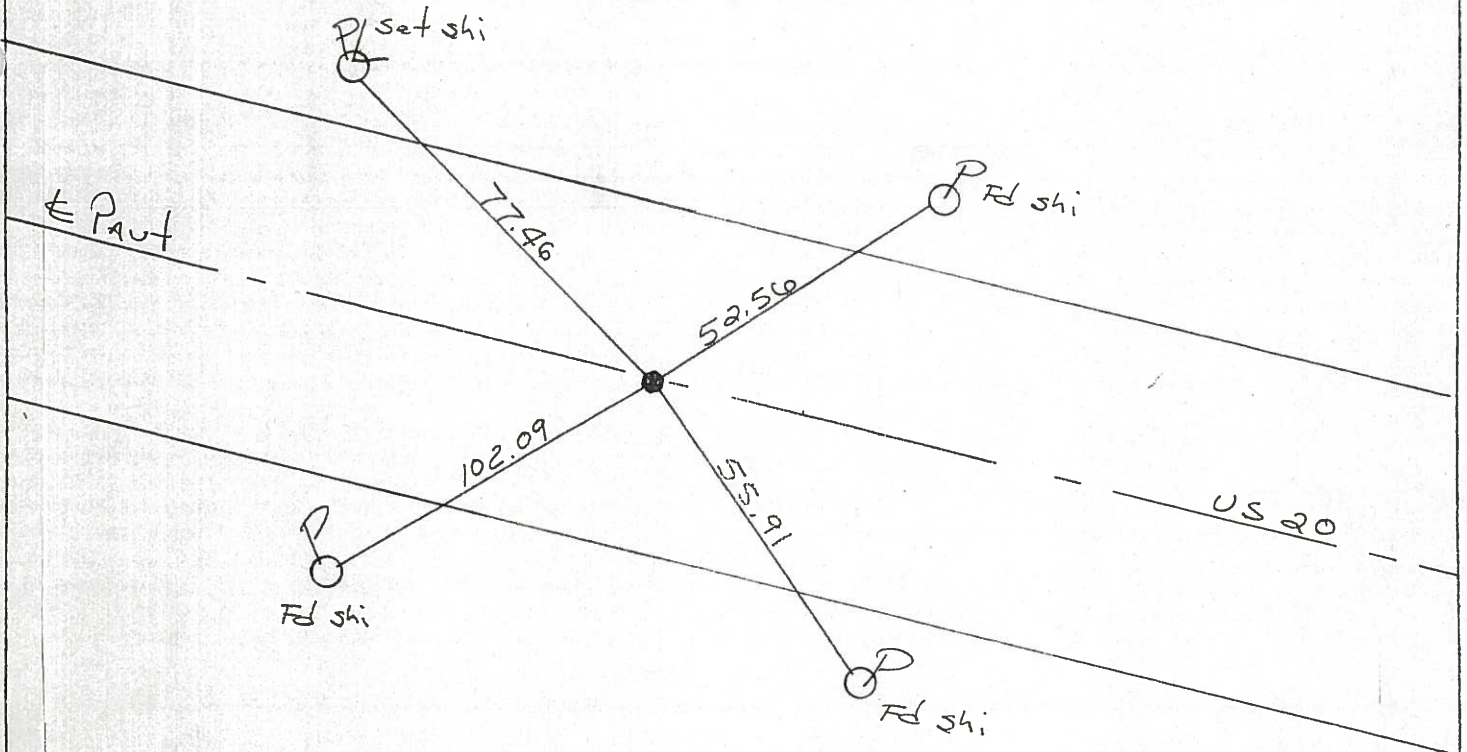
35.7 TO RT EDGE PAVEMENT (FACE CURB)

S.L.M. 1355+76

51



Home of THE
"GOLDEN ARCHES"
m



O.D.O.T. DISTRICT 2 SURVEY OFFICE

PERSONNEL _____

REFERENCE NO. _____

SHEET 2 OF _____

NOTES HOFFMAN

H.C. BARNHISEL

R.C. LOSHRKE

DATE 10-25-88

WEATHER P. CLEAR

TEMP. 40°

ROUTE US 20

COUNTY SANDUSKY

TOWNSHIP GREEN CREEK

SECTION 14

T4 N R 16 E

TYPE MONUMENT SMALL R.R. SPIKE

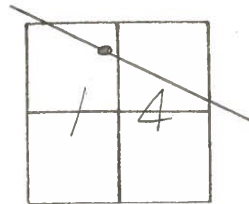
ON SURFACE - BELOW YES

LEFT - C. PAV'T. - RIGHT YES

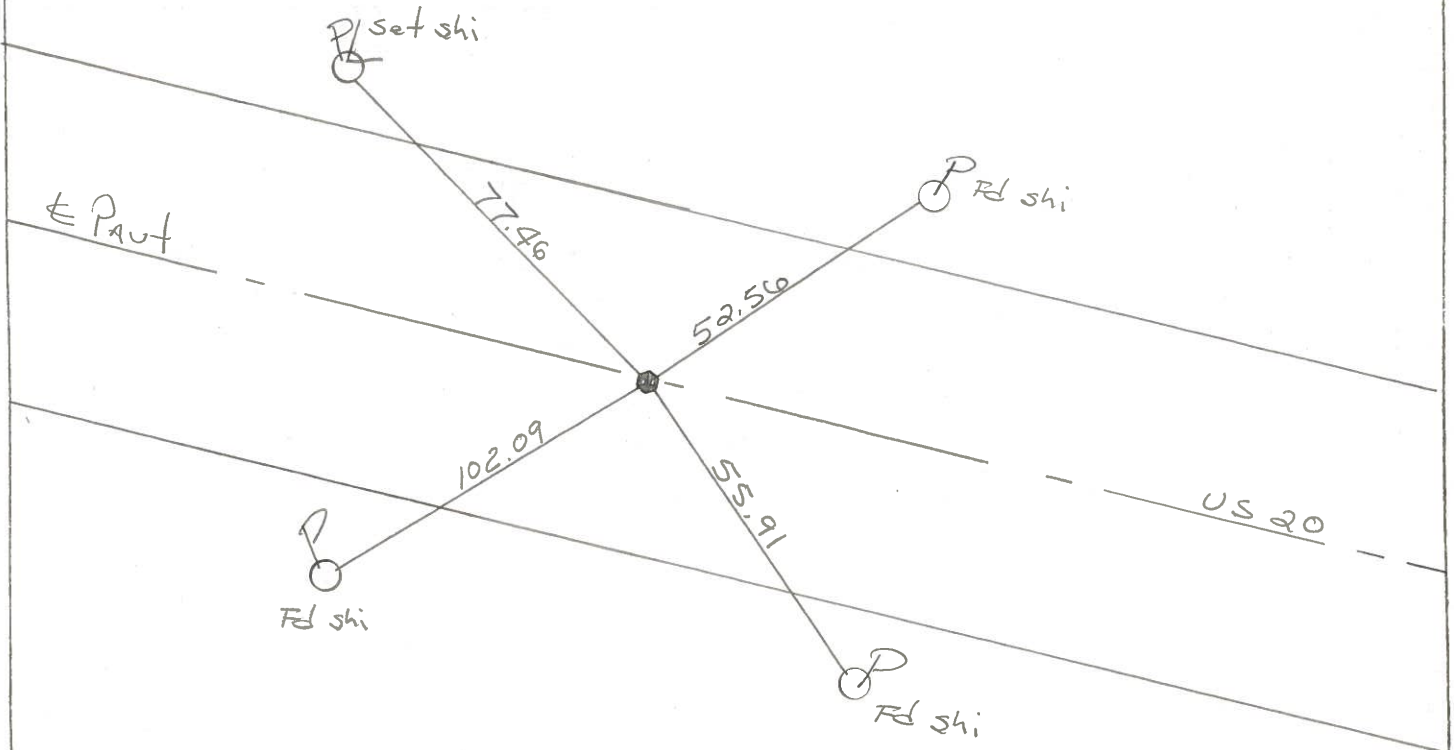
35.7 TO RT EDGE PAVEMENT (FACE CURB)

S.L.M. 1355 + 76

51



Home of the
"GOLDEN ARCHES"
M



County Sandusky S.R. US*20

Date 8 May 85

Township Green Creek

Weather Sunny

Section 14

Temp. 62°

T N, R E

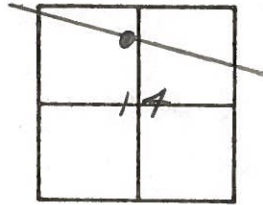
Personnel I. Stone

R. Michalak

D. Cuatis

J. Hauscholder

(51)



1355+75

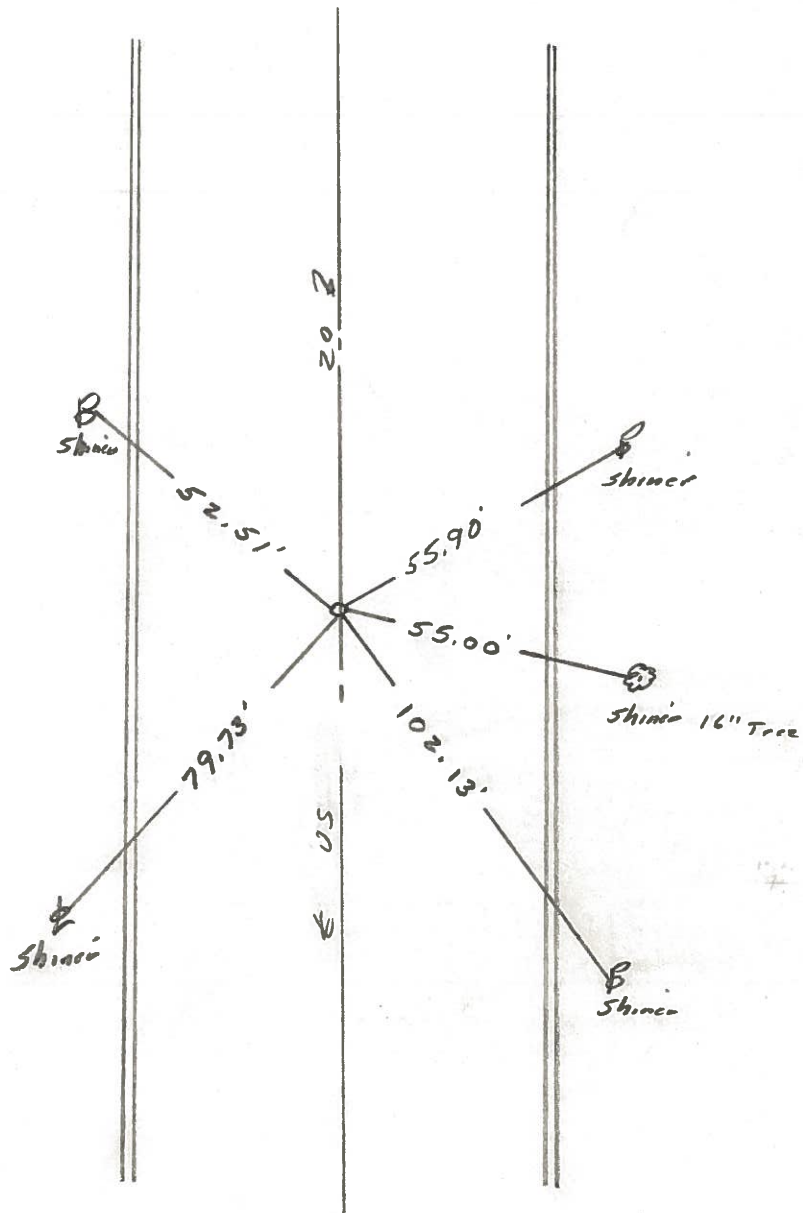
REF. NO.

Set Small Spk. 8/25/06

CLYDE



By Mc Donalds



PERSONNEL TITLE PERSONNEL TITLE

COUNTY Sandusky

DATE Feb, 1961

S. R. #20

WEATHER

SEC. Clyde (Pt)

TEMP.

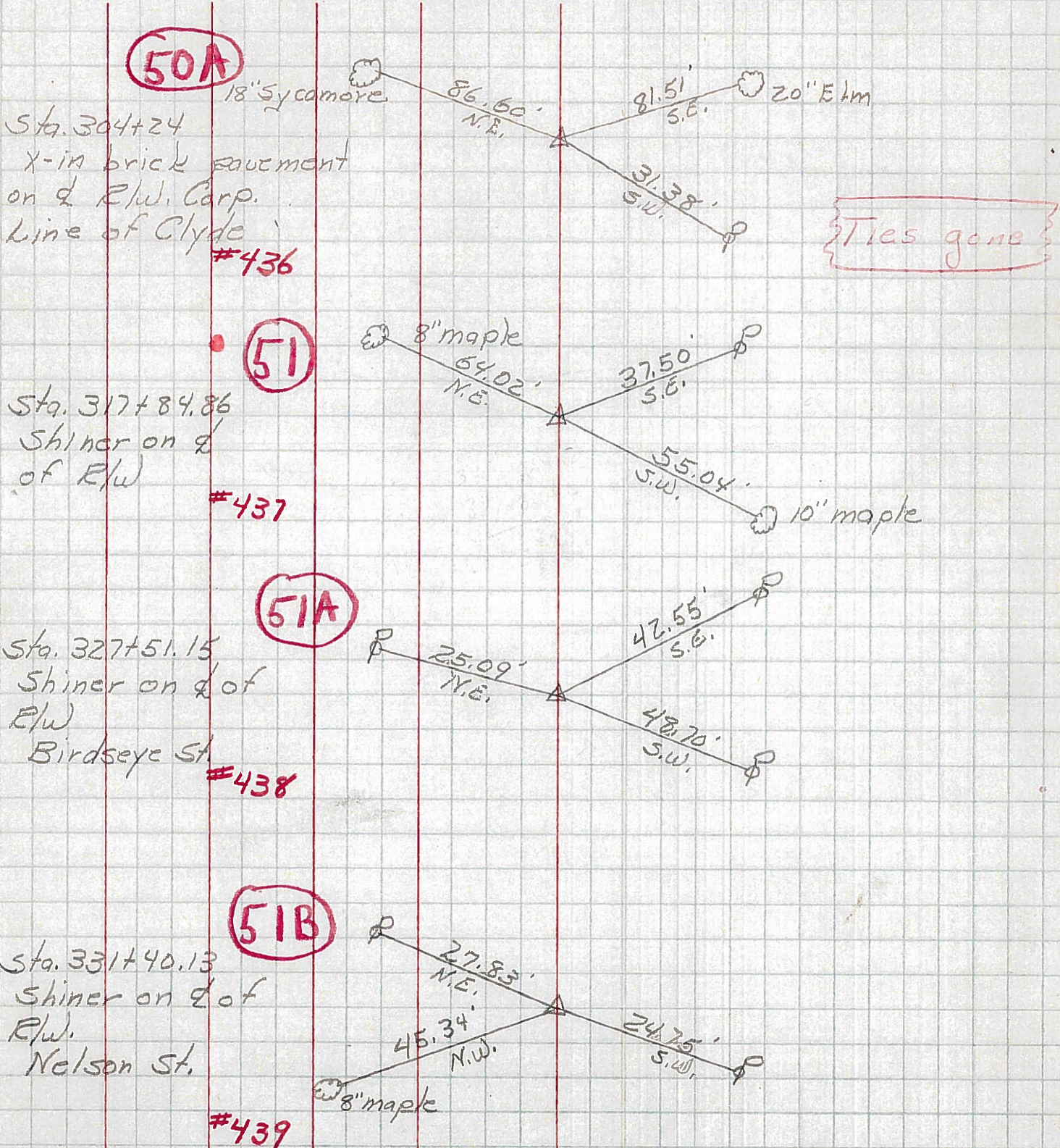
DESCRIPTION

LEFT

CENTER LINE

RIGHT

JOB NO.



50A

18" Sycamore

86.60' N.E.

81.51' S.E.

20" Elm

31.38' S.W.

Ties gone

Sta. 304+24
X-in brick pavement
on & R/W. Corp.
Line of Clyde

#436

51

8" maple

64.02' N.E.

37.50' S.E.

10" maple

55.04' S.W.

Sta. 317+84.86
Shiner on &
of R/W

#437

51A

25.09' N.E.

42.55' S.E.

48.70' S.W.

Sta. 327+51.15
Shiner on & of
R/W
Birdseye St.

#438

51B

27.83' N.E.

45.34' N.W.

24.75' S.W.

8" maple

Sta. 331+40.13
Shiner on & of
R/W
Nelson St.

#439