

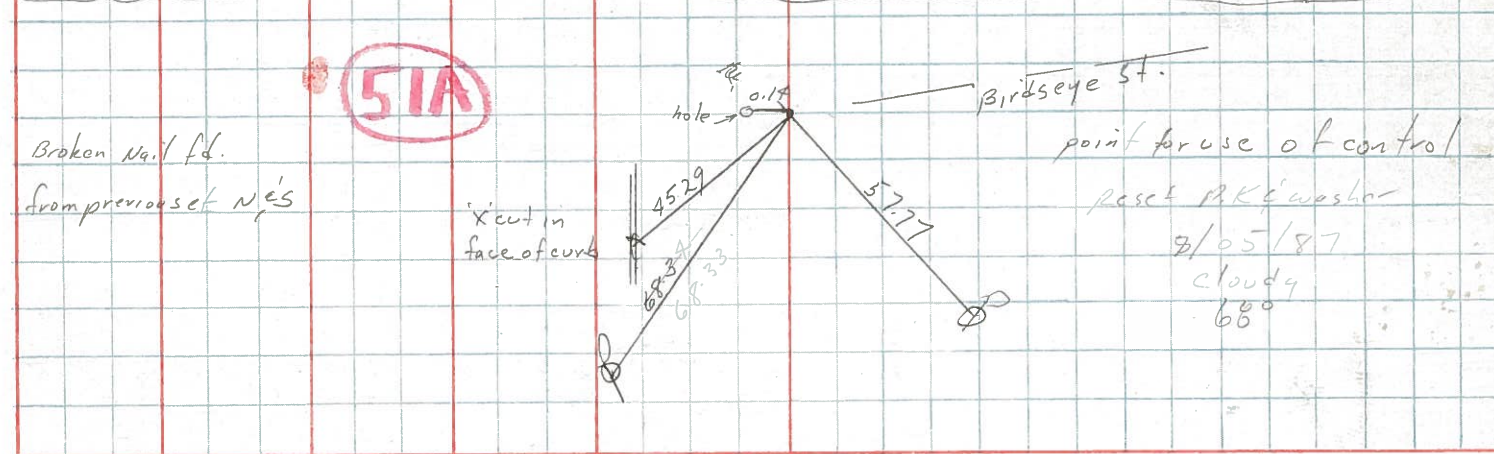
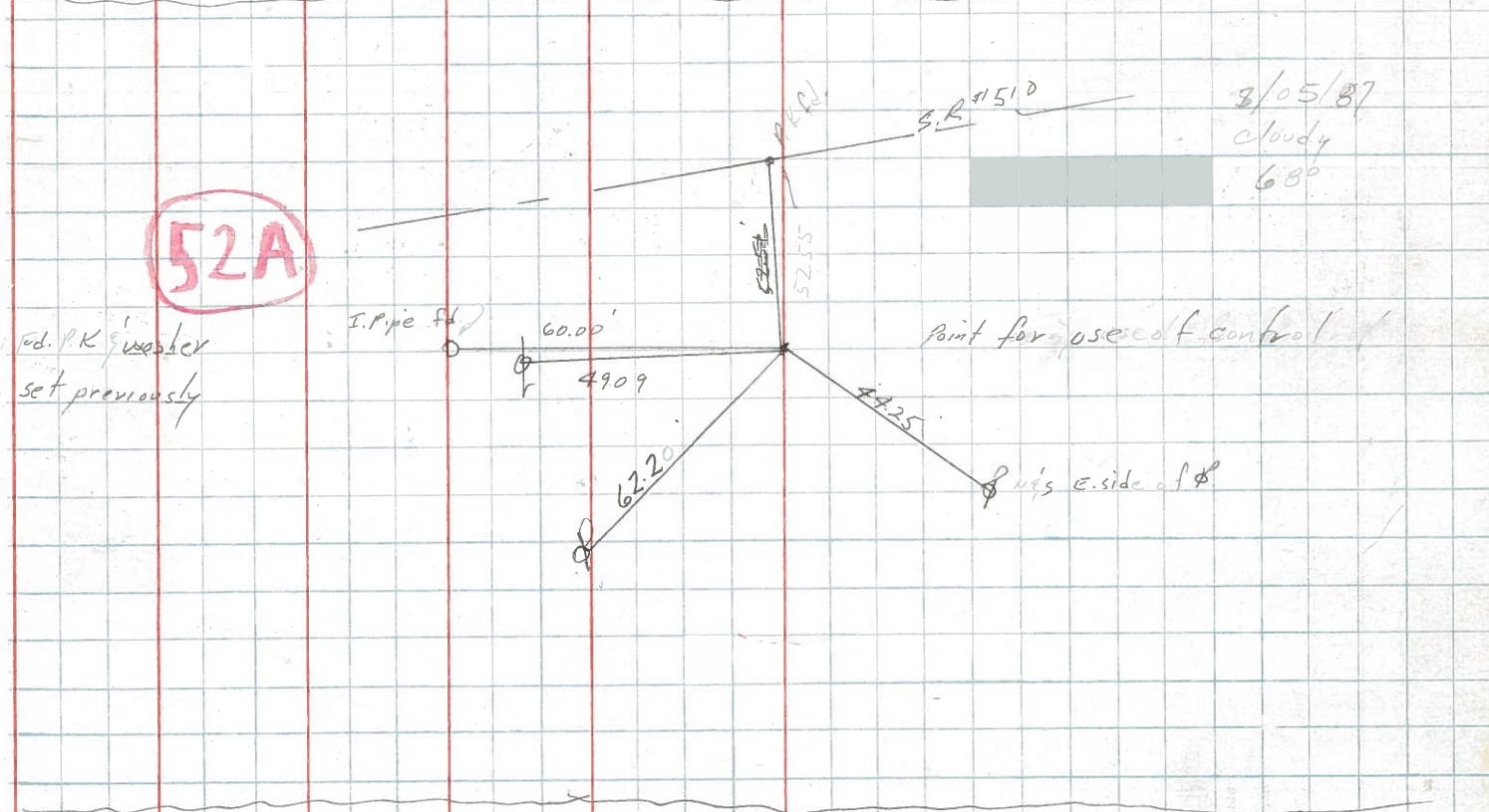
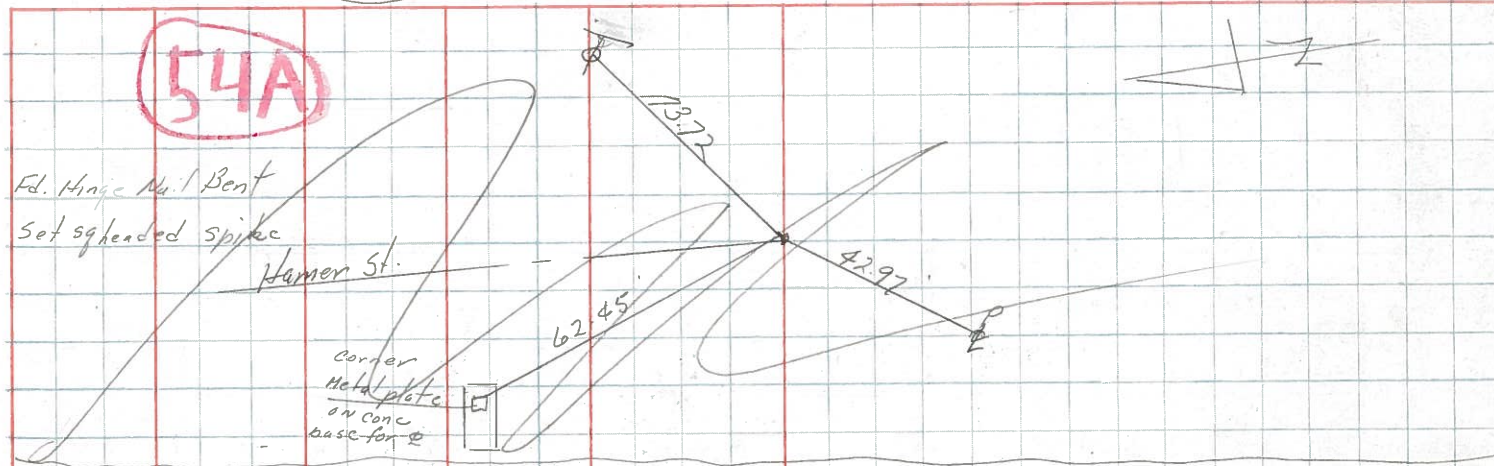
PERSONNEL	TITLE	PERSONNEL	TITLE
Cronin			
Ripple			
Geyman			
Barbour			

COUNTY Sandusky DATE 5/13/85

S. R. U.S. #20 WEATHER sunny

SEC. Clyde TEMP. 82°

DESCRIPTION Ties LEFT CENTER LINE RIGHT JOB NO.



3/05/87  
cloudy  
68°

3/05/87  
cloudy  
68°

PERSONNEL TITLE PERSONNEL TITLE

COUNTY Sandusky

DATE Feb, 1961

S. R. #20

WEATHER

SEC. Clyde (Pt)

TEMP.

DESCRIPTION

LEFT

CENTER LINE

RIGHT

JOB NO.

**50A**  
 Sta. 304+24  
 X-in brick pavement  
 on E.W. Corp.  
 Line of Clyde  
 #436

18" Sycamore

86.60' N.E.

81.51' S.E.

20" Elm

31.38' S.W.

Ties gone

**51**  
 Sta. 317+84.86  
 Shiner on E  
 of E/W  
 #437

8" maple

64.02' N.E.

37.50' S.E.

10" maple

55.04' S.W.

**51A**  
 Sta. 327+51.15  
 Shiner on E of  
 E/W  
 Birdseye St.  
 #438

25.09' N.E.

42.55' S.E.

48.70' S.W.

**51B**  
 Sta. 331+40.13  
 Shiner on E of  
 E/W.  
 Nelson St.  
 #439

8" maple

27.83' N.E.

45.34' N.W.

24.75' S.W.