

PERSONNEL TITLE PERSONNEL TITLE

COUNTY Sandusky

DATE Feb, 1961

S. R. #20

WEATHER

SEC. Clyde (Pt)

TEMP.

DESCRIPTION

LEFT

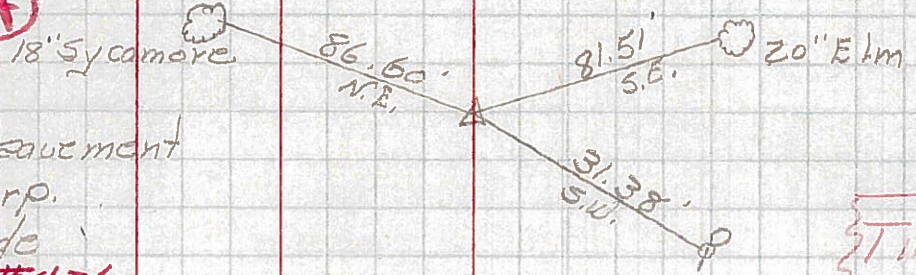
CENTER LINE

RIGHT

JOB NO.

50A

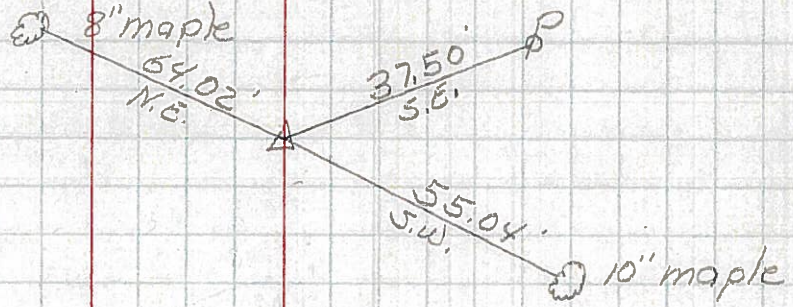
Sta. 304+24  
X-in brick pavement  
on E.W. Corp.  
Line of Clyde  
#436



Ties gone

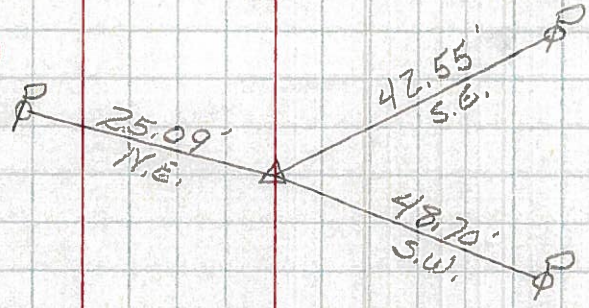
51

Sta. 317+84.86  
Shiner on E  
of E/W  
#437



51A

Sta. 327+51.15  
Shiner on E of  
E/W  
Birdseye St  
#438



51B

Sta. 331+40.13  
Shiner on E of  
E/W.  
Nelson St.  
#439

