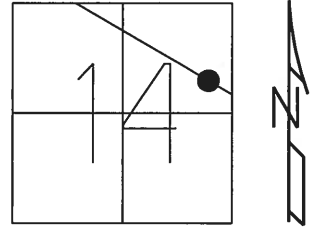


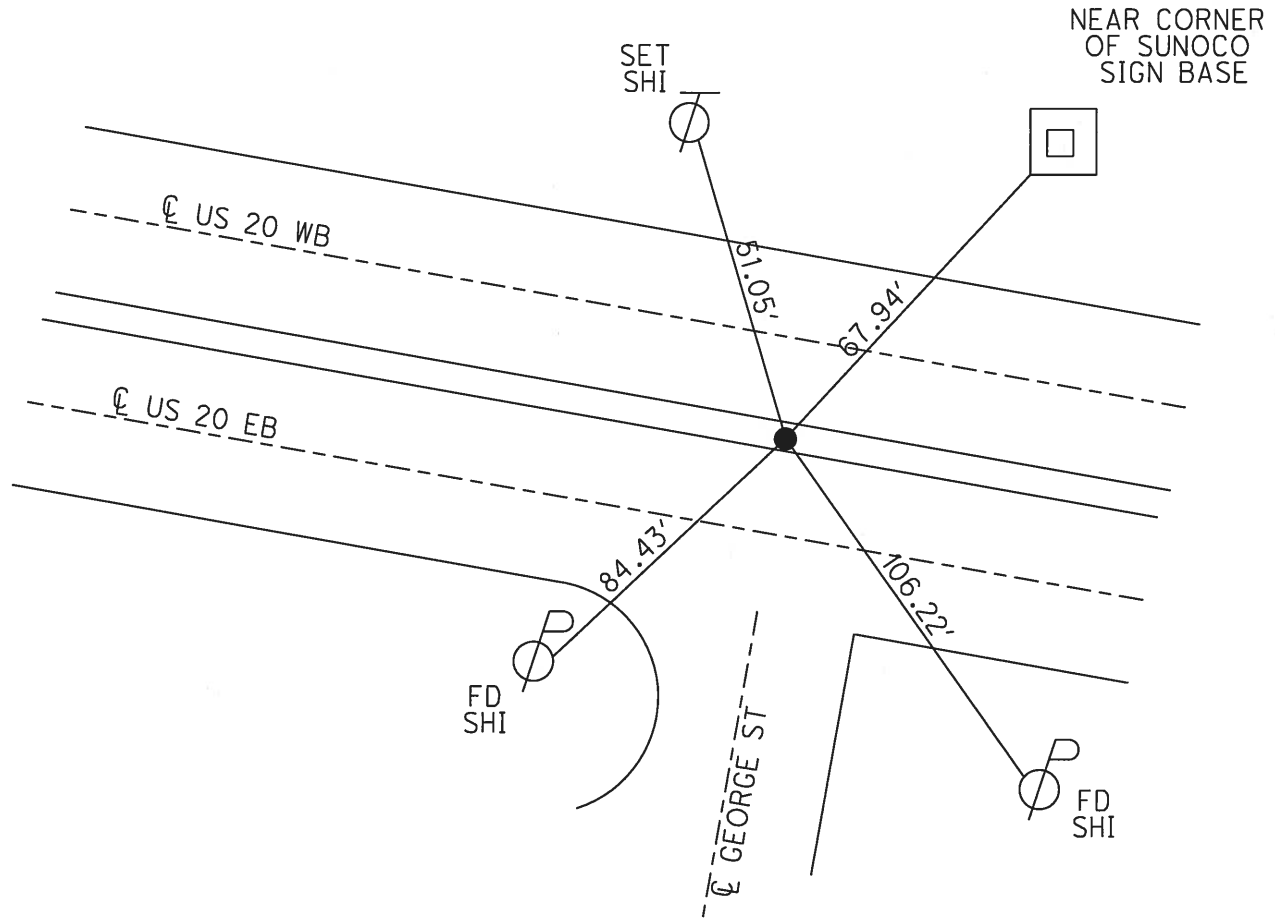
O.D.O.T. DISTRICT 2 SURVEY OFFICE (USE ONLY)

PERSONNEL _____ REFERENCE NO. 52 SHEET 6 OF 9
 NOTES HOMAN DATE 5/11/07 ROUTE US 20
 H.C. HUSS WEATHER SUNNY COUNTY SANDUSKY
 R.C. CANTERBURY TEMP. 70° TOWNSHIP GREEN CREEK
 SECTION 14
 T 4 N R 16 E

TYPE MONUMENT P.K. NAIL/WASHER
 ON SURFACE - ~~BELOW~~ ON
~~LEFT~~ - ☉ PAV'T - ~~RIGHT~~ ON ☉
36.5' TO LT EDGE PAVEMENT
 S.L.M. 1373+25
 GPS NORTHING: 599388.99 EASTING: 1837032.77



RECORD:
 SET PK/WASHER
 10/04/96, BVD
 SET MAG/WASHER
 11/14/07, BWC



O.D.O.T. DISTRICT 2 SURVEY OFFICE

PERSONNEL _____

REFERENCE NO. _____

SHEET 3 OF _____

NOTES HOFFMAN

H.C. BARNHISEL

DATE 10-25-88

ROUTE US 20

R.C. LOCHRES

WEATHER P. CLEAR

COUNTY SANDUSKY

TEMP. 40°

TOWNSHIP GREEN CREEK

SECTION 14

T. 4 N. R. 16 E

TYPE MONUMENT P.K. Nail

set Sm. RR spike 7-5-89

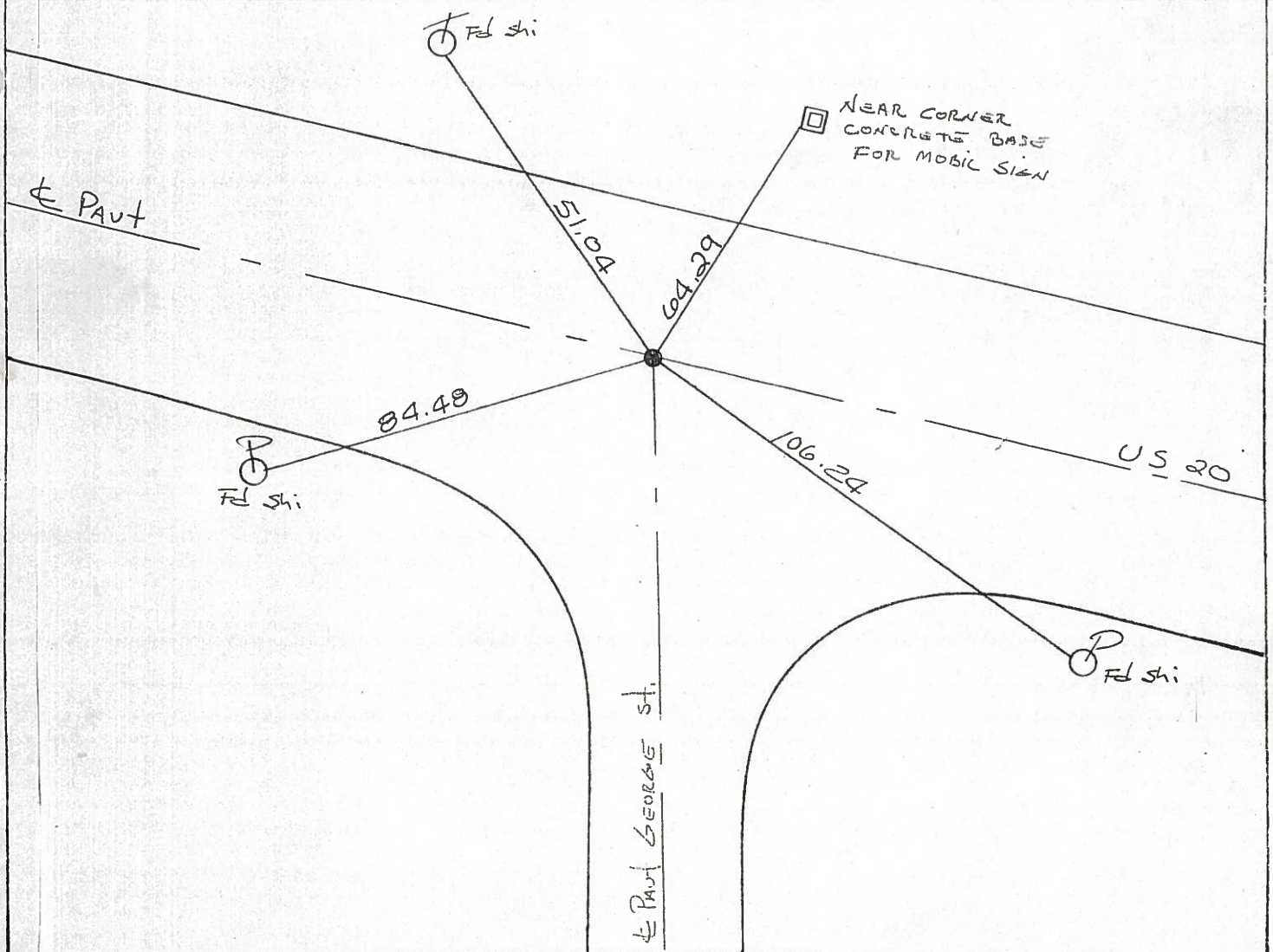
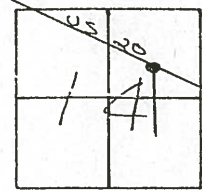
ON SURFACE - BELOW YES

~~LEFT - & PAV'T. - RIGHT~~ YES

TO EDGE PAVEMENT

S.L.M. 1373+25

52



O.D.O.T. DISTRICT 2 SURVEY OFFICE

PERSONNEL _____

REFERENCE NO. _____

SHEET 3 OF _____

NOTES HOFFMAN

H.C. BARNHISEL

DATE 10-25-88

ROUTE US 20

R.C. LOSHREE

WEATHER P.C. CLEAR

COUNTY SANDUSKY

TEMP. 40°

TOWNSHIP GREEN CREEK

SECTION 14

T. 4 N. R. 16 E

TYPE MONUMENT P.K. NAIL

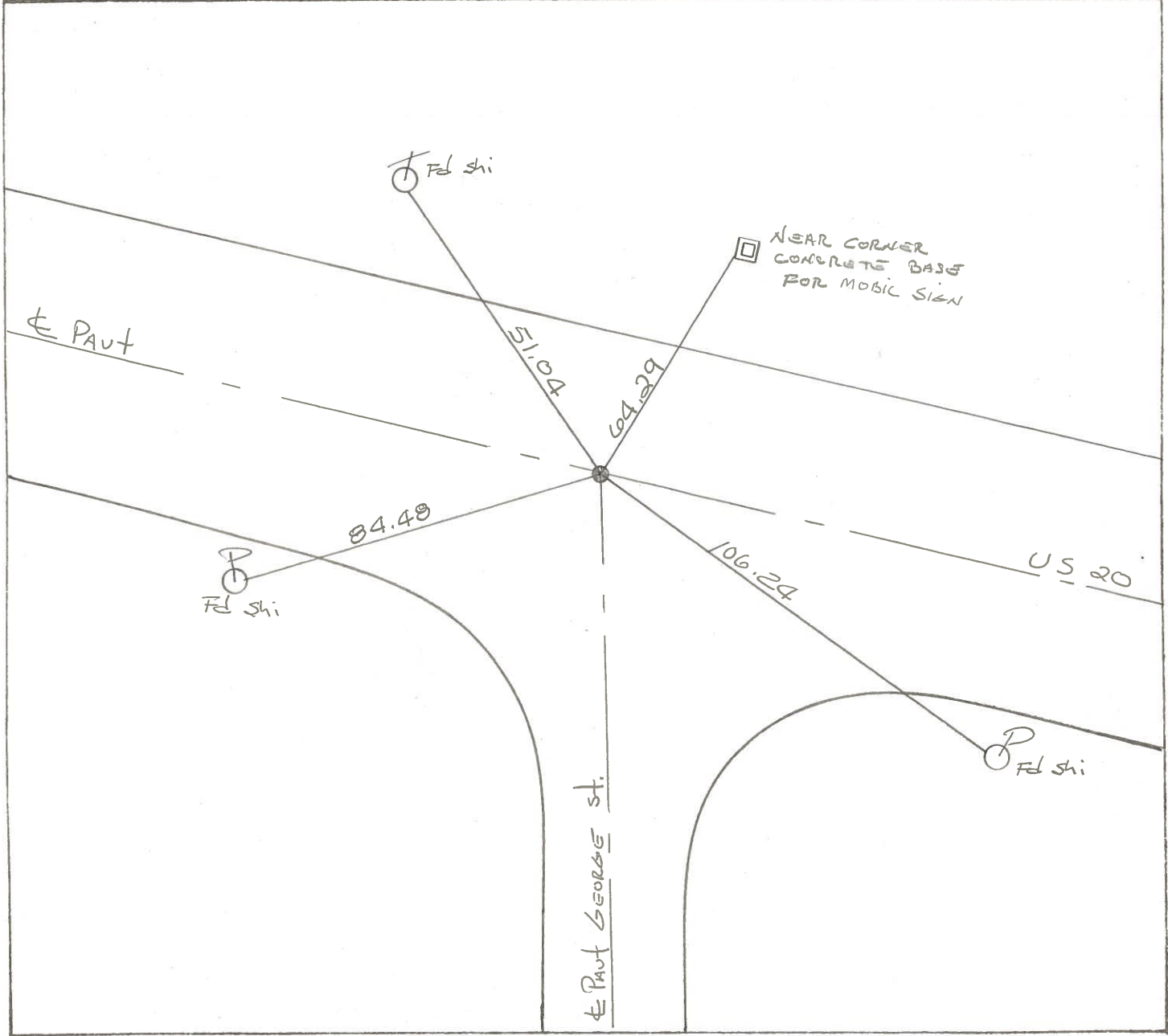
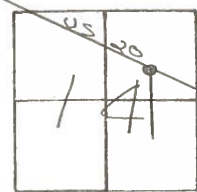
ON SURFACE - BELOW YES

~~LEFT - & PAV'T. - RIGHT~~ YES

TO EDGE PAVEMENT

S.L.M. 1373+25

52



County Sandusky S.R. 05#20

Date 8 May 85

Township Green Creek

Weather Sunny

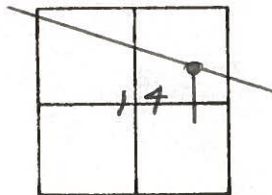
Section 14

Temp. 64°

T N, R E

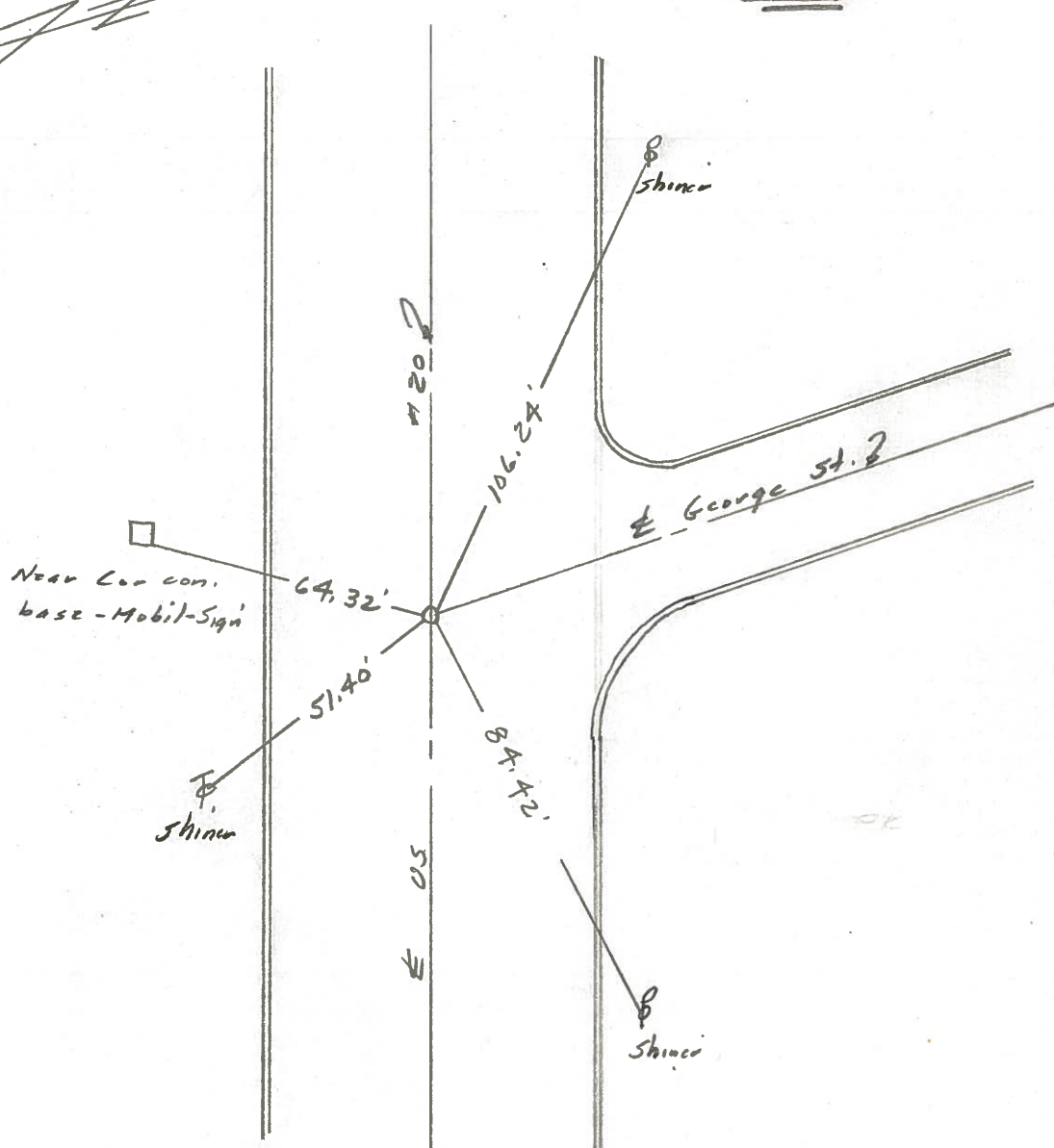
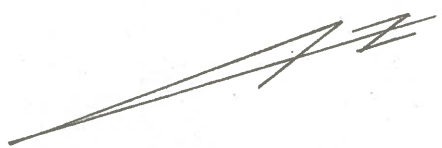
Personnel I. Stone
R. Michalak
D. Curtis
J. Hausholder

52



1373423

REF. NO.
 Set PK Nail 8/25/86
CLYDE



PERSONNEL TITLE PERSONNEL TITLE

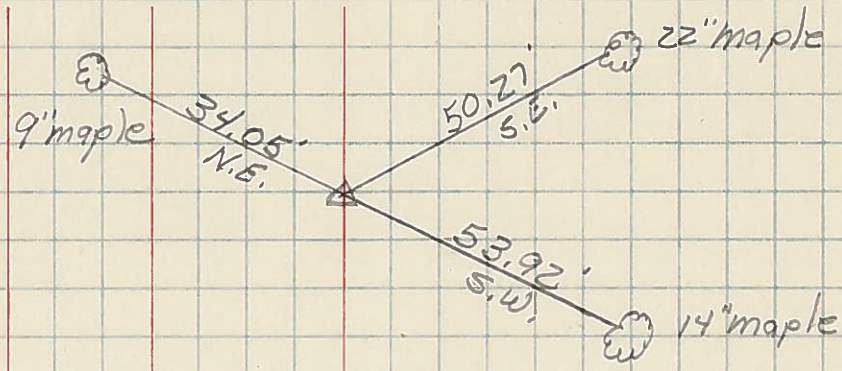
COUNTY Sandusky DATE

S. R. #20 WEATHER

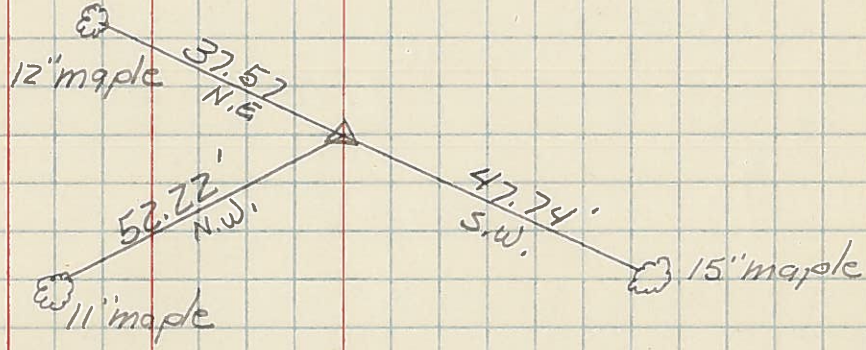
SEC. TEMP.

DESCRIPTION LEFT CENTER LINE RIGHT JOB NO.

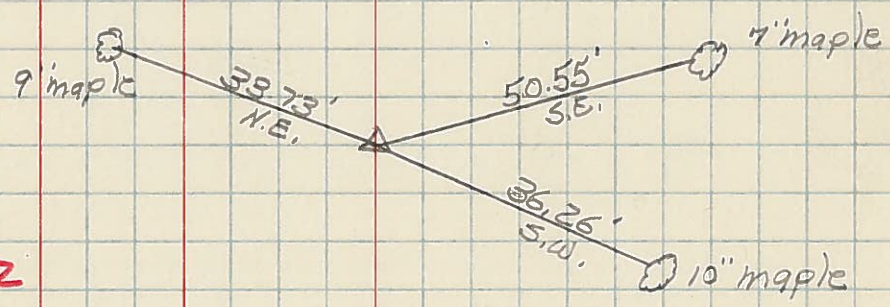
Sta. 335+32.49
Shiner on E of
George St.
#440



Sta. 337+1.65
Shiner on E of
Midvale St.
#441



Sta. 339+14.61
Shi. on E of Elw
Uine St.
#442



Sta. 340+69.72
Shi. on E of Elw
Elmdale St.
#443

