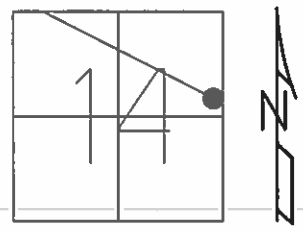


O.D.O.T. DISTRICT 2 SURVEY OFFICE (USE ONLY)

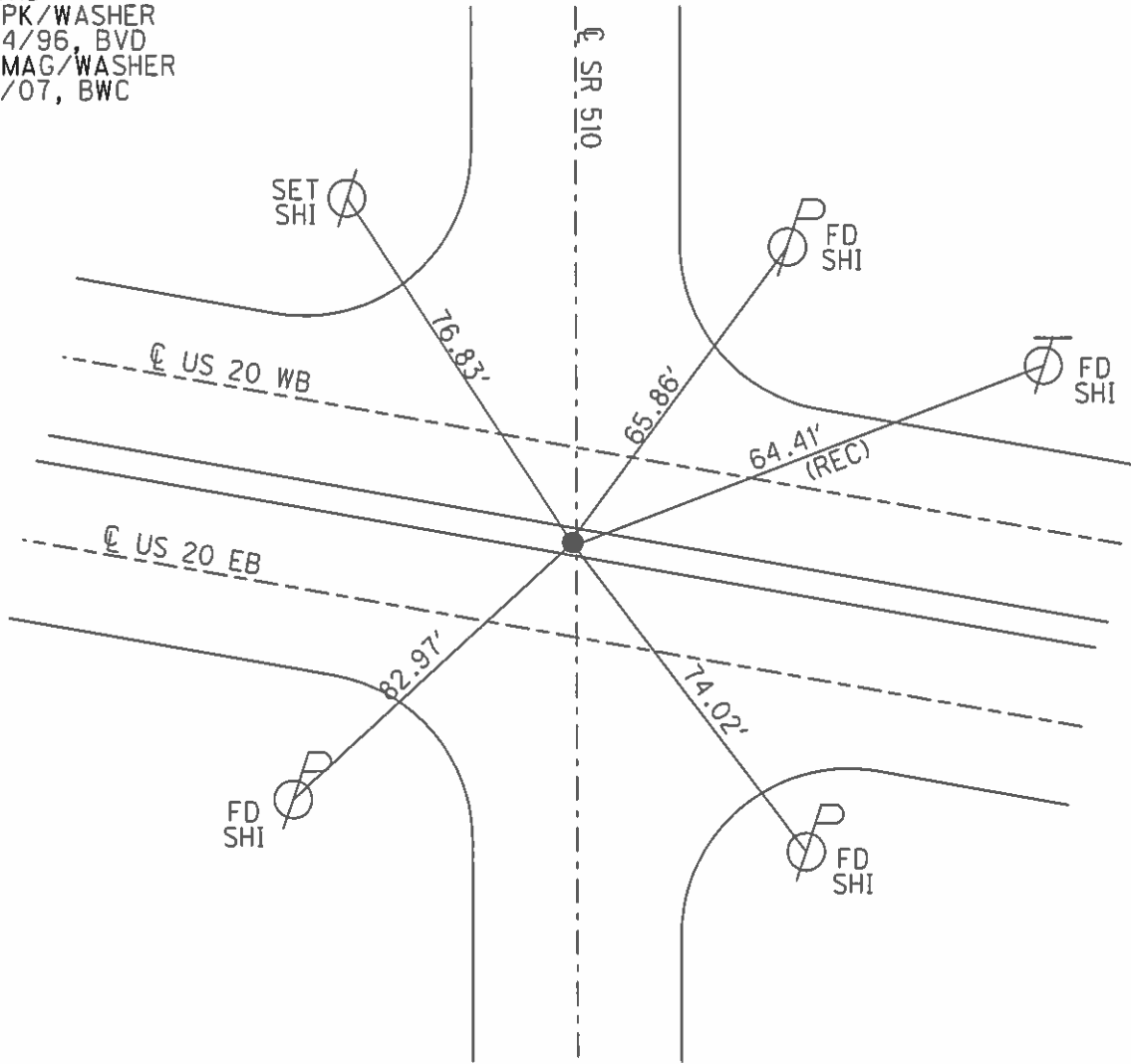
PERSONNEL \_\_\_\_\_ REFERENCE NO. 53 SHEET 7 OF 9  
 NOTES HOMAN DATE 5/21/07 ROUTE US 20  
 H.C. HUSS WEATHER CLOUDY COUNTY SANDUSKY  
 R.C. CANTERBURY TEMP. 60° TOWNSHIP GREEN CREEK  
 SECTION 14  
 T 4 N R 16 E

TYPE MONUMENT MAG NAIL  
 ON SURFACE - ~~BELOW~~ ON  
~~LEFT~~ - ℄ PAV'T - ~~RIGHT~~ ON ℄  
36.6' TO LT EDGE PAVEMENT  
 S.L.M. 1384+12



GPS NORTHING: 599018.441 EASTING: 1838054.002

RECORD:  
 SET PK/WASHER  
 10/04/96, BVD  
 SET MAG/WASHER  
 11/15/07, BWC



# O.D.O.T. DISTRICT 2 SURVEY OFFICE

PERSONNEL

REFERENCE NO. \_\_\_\_\_

SHEET 4 OF \_\_\_\_\_

NOTES HOFFMAN

H.C. BARNHISEL

DATE 10-25-88

ROUTE US 20

R.C. LOCHRKE

WEATHER P. CLEAR

COUNTY SANDUSKY

TEMP. 40°

TOWNSHIP GREEN CREEK

SECTION 14

T. 4 N. R. 16 E

TYPE MONUMENT P.K. Nail RR Spike 7-5-89

ON SURFACE - BELOW YES

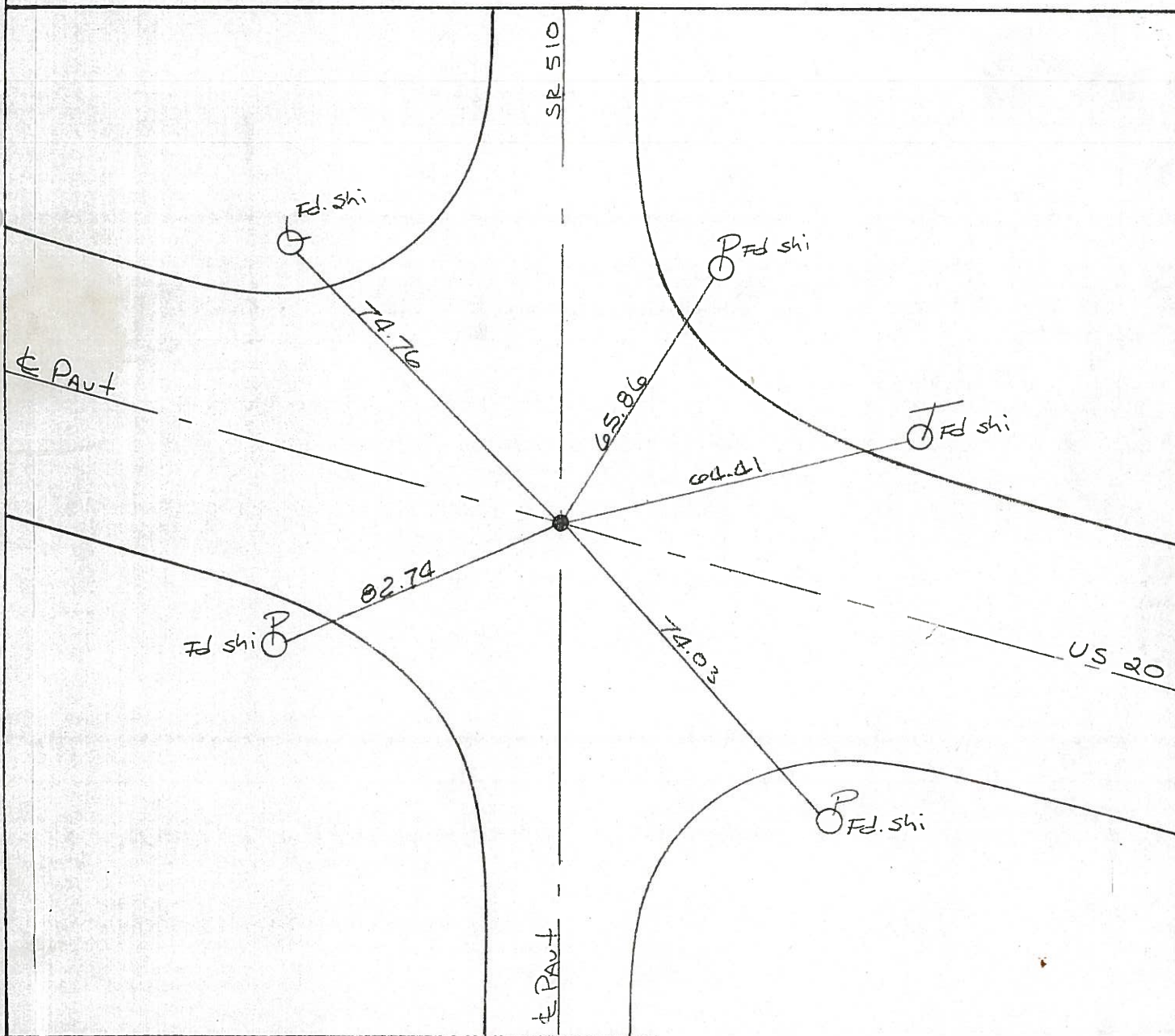
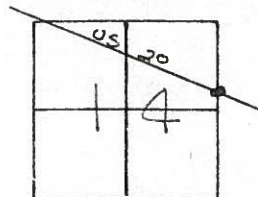
~~LEFT~~ - ~~E~~ PAV'T. - ~~RIGHT~~ YES

TO EDGE PAVEMENT

S.L.M. 1384+12

*Set Small*

53



# O.D.O.T. DISTRICT 2 SURVEY OFFICE

PERSONNEL \_\_\_\_\_

REFERENCE NO. \_\_\_\_\_

SHEET 4 OF \_\_\_\_\_

NOTES HOFFMAN

H.C. BARNHISEL

R.C. LOEBRKE

DATE 10-25-88

WEATHER P. CLEAR

TEMP. 40°

ROUTE US 20

COUNTY SANDUSKY

TOWNSHIP GREEN CREEK

SECTION 14

T. 4 N. R. 16 E

TYPE MONUMENT P.I.C. NAIL

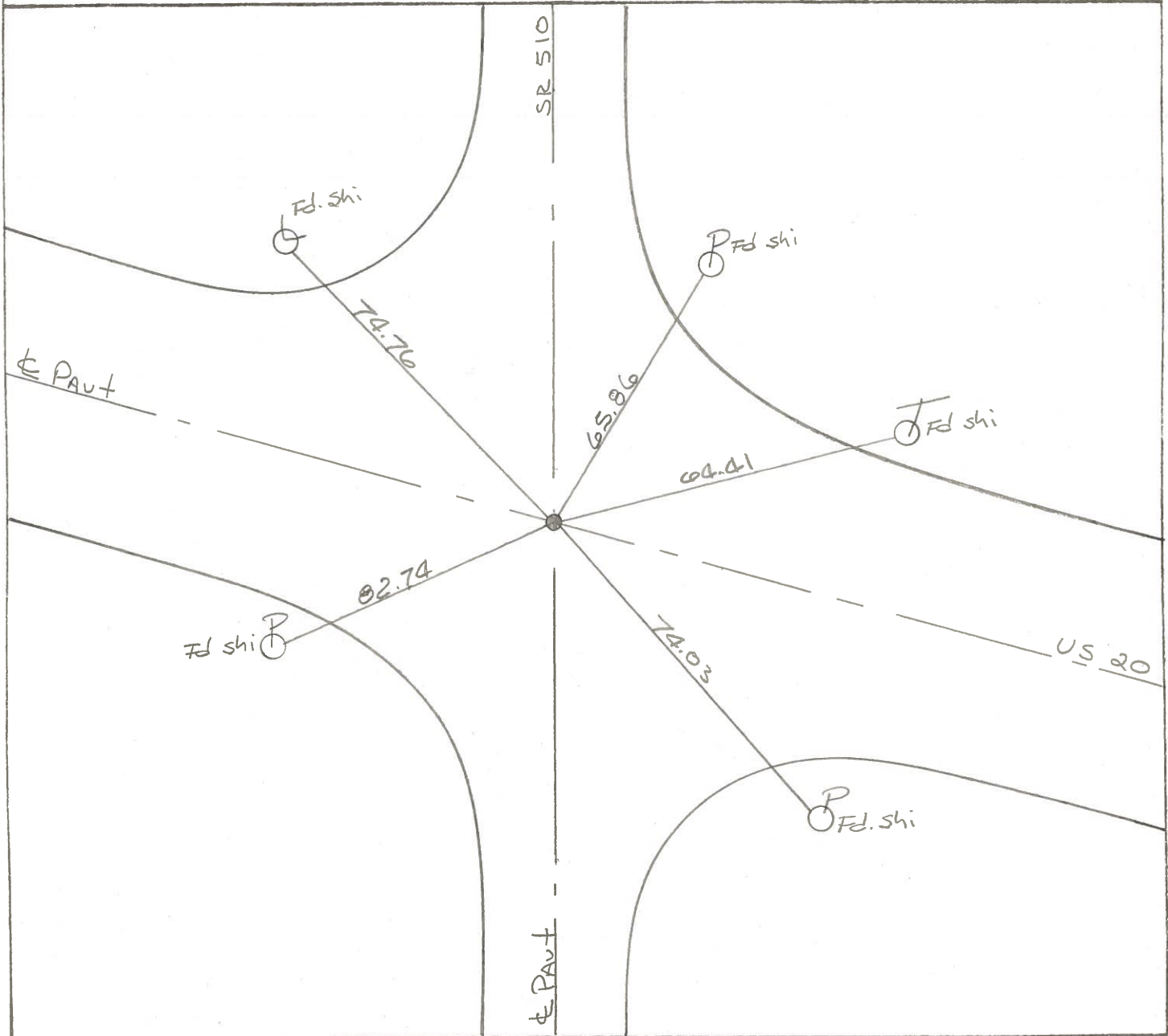
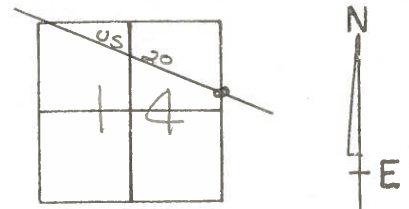
ON SURFACE - BELOW YES

~~LEFT - E. PAV'T. - RIGHT~~ YES

TO EDGE PAVEMENT

S.L.M. 1384+12

53



County Sandusky S.R. US#20

Date 8 May 85

Township Green Creek

Weather Sunny

Section 14

Temp. 65°

T\_N, R\_E

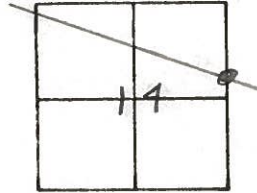
Personnel I. Stone

R. Michalok

D. Curtis

J. Hirschholder

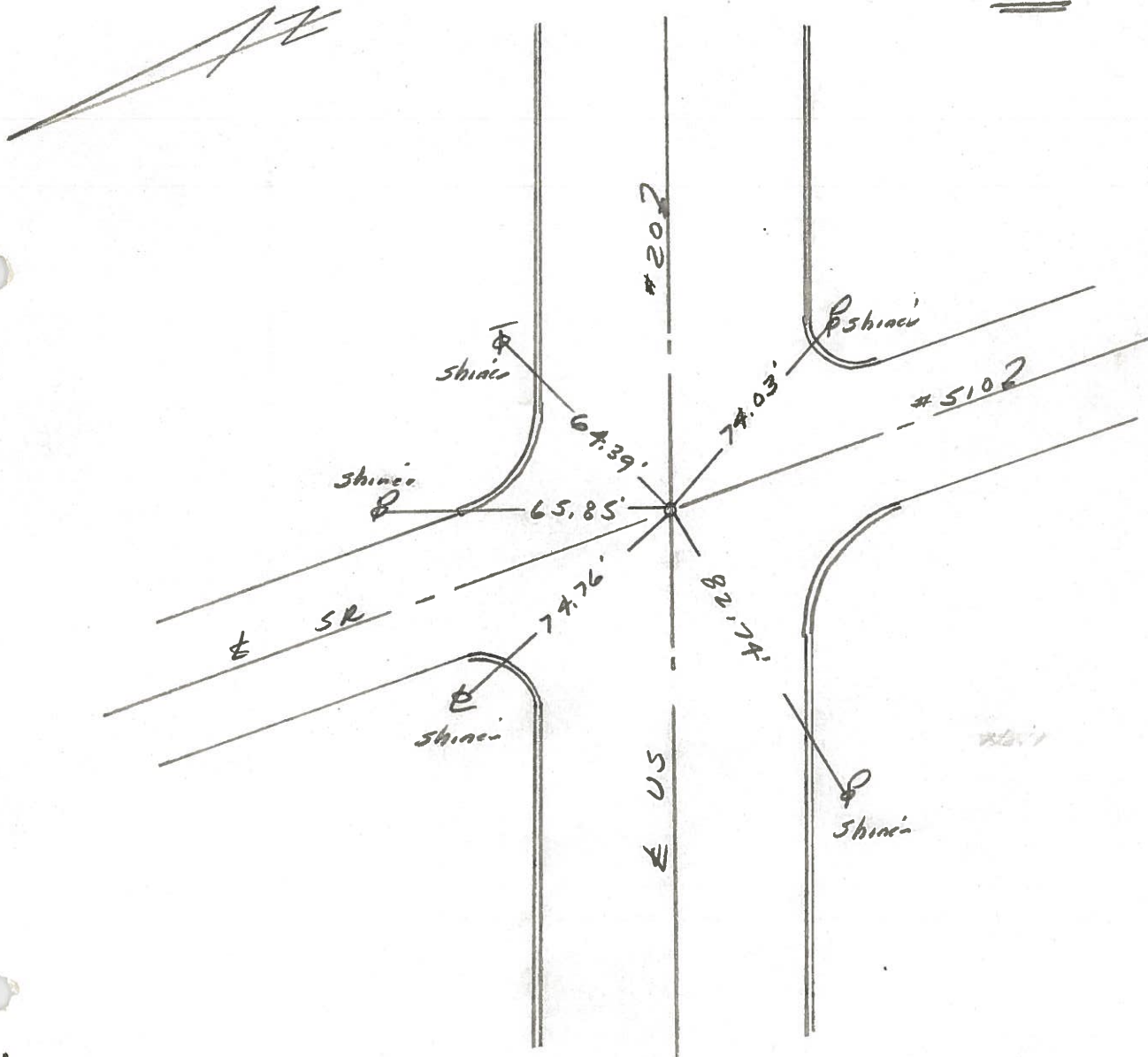
53



1384+10

REF. NO.  
Set PK Nail 8/25/86

CLYDE



PERSONNEL TITLE PERSONNEL TITLE

COUNTY Sandusky DATE

S. R. #20 WEATHER

SEC. TEMP.

DESCRIPTION LEFT CENTER LINE RIGHT JOB NO.

