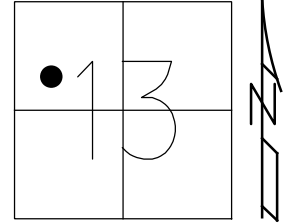


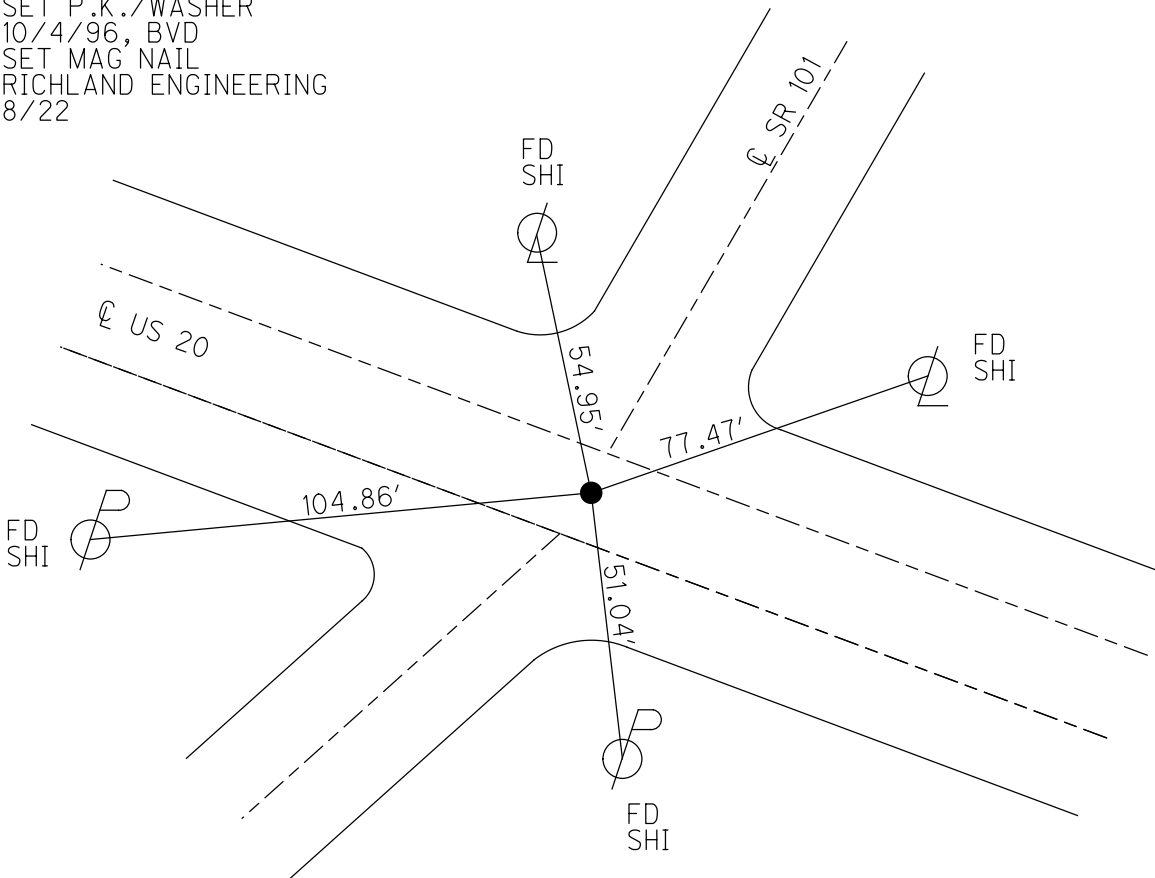
O.D.O.T. DISTRICT 2 SURVEY OFFICE (USE ONLY)

PERSONNEL _____ REFERENCE NO. 61 SHEET 1 OF 10
 NOTES WESTFALL DATE 6/27/13 ROUTE SR 20
 H.C. ROUSOS WEATHER CLEAR COUNTY SANDUSKY
 R.C. HOMAN TEMP. 70° TOWNSHIP GREEN CREEK
 _____ SECTION 13
 _____ T 4 N R 16 E

TYPE MONUMENT MAG NAIL
 ON SURFACE - ~~BELOW~~ ON
 LEFT - ☉ PAV'T - RIGHT ON
36.6' TO LT EDGE PAVEMENT
 S.L.M. 1393+92.00
 Grid: Northing: 598670.918 Easting: 1839011.073



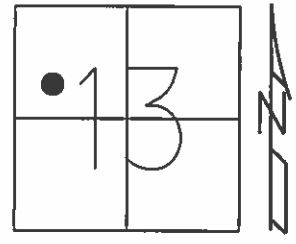
FD SM.R.R.SPIKE
 AT SURFACE
 7/29/96, MB
 SET P.K./WASHER
 10/4/96, BVD
 SET MAG NAIL
 RICHLAND ENGINEERING
 8/22



O.D.O.T. DISTRICT 2 SURVEY OFFICE (USE ONLY)

PERSONNEL _____ REFERENCE NO. 61 SHEET 1 OF 9
 NOTES WESTFALL DATE 6/27/13 ROUTE SR 20
 H.C. ROUSOS WEATHER CLEAR COUNTY SANDUSKY
 R.C. HOMAN TEMP. 70° TOWNSHIP GREEN CREEK
 _____ SECTION 13
 _____ T 4 N R 16 E

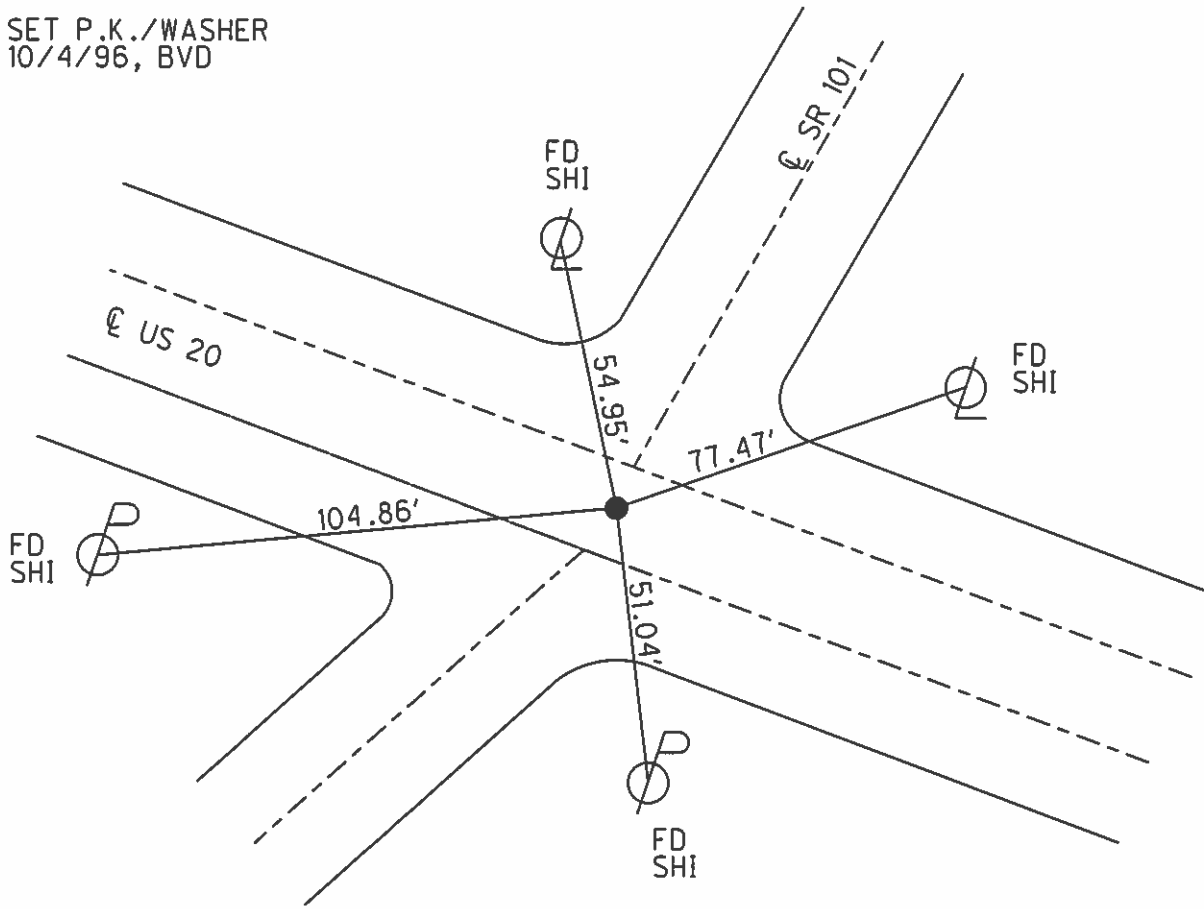
TYPE MONUMENT MAG NAIL
 ON SURFACE - ~~BELOW~~ ON
 LEFT - ☉ PAV'T - RIGHT ON
36.6' TO LT EDGE PAVEMENT
 S.L.M. 1393+92.00



Grid: Northing: 598670.746 Easting: 1839010.974

FD SM.R.R.SPIKE
 AT SURFACE
 7/29/96, MB

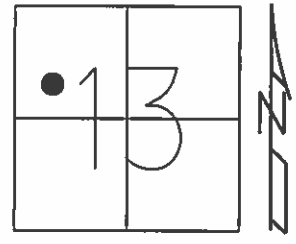
SET P.K./WASHER
 10/4/96, BVD



O.D.O.T. DISTRICT 2 SURVEY OFFICE (USE ONLY)

PERSONNEL _____ REFERENCE NO. 61 SHEET 1 OF 9
 NOTES WESTFALL DATE 6/27/13 ROUTE SR 20
 H.C. ROUSOS WEATHER CLEAR COUNTY SANDUSKY
 R.C. HOMAN TEMP. 70° TOWNSHIP GREEN CREEK
 _____ SECTION 13
 _____ T 4 N R 16 E

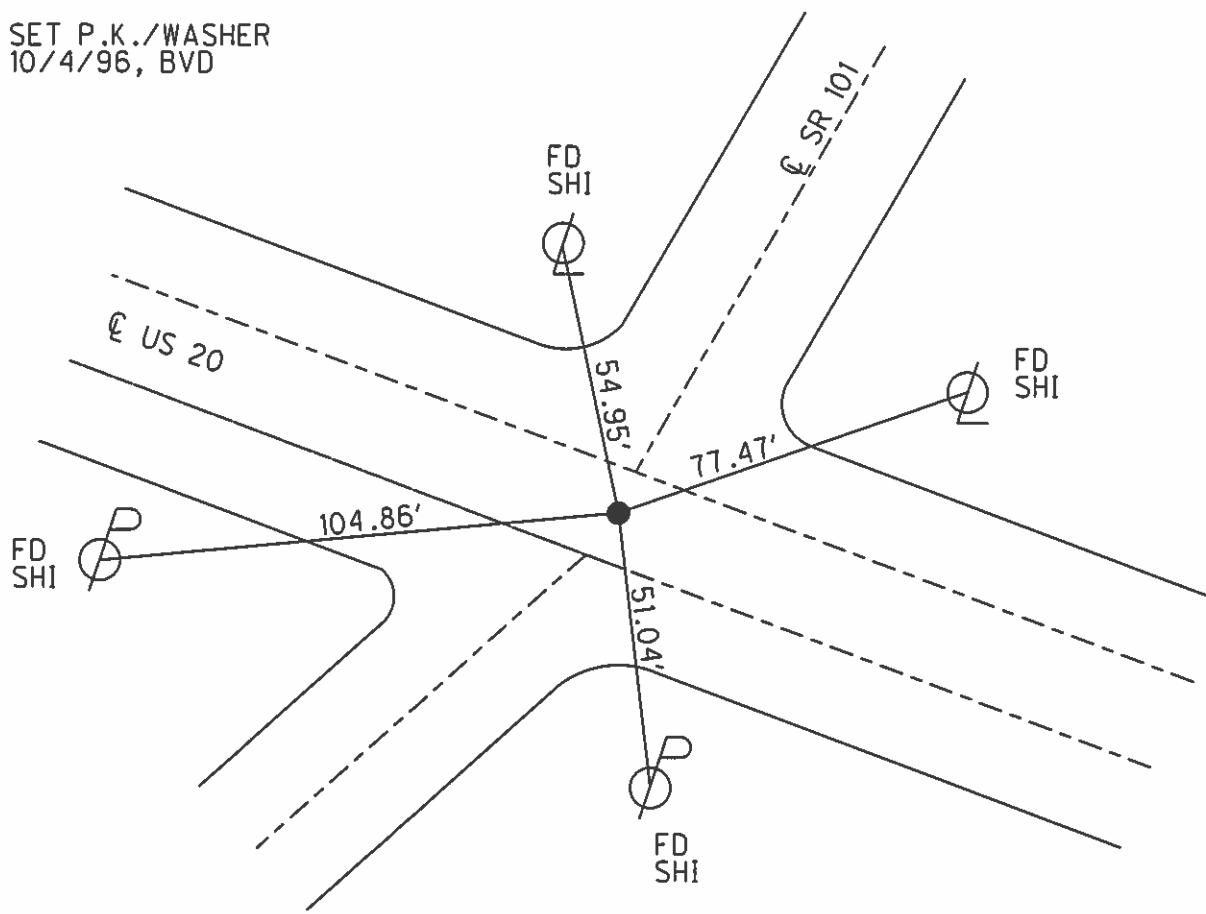
TYPE MONUMENT MAG NAIL
 ON SURFACE - ~~BELOW~~ ON
 LEFT - ☉ PAV'T - RIGHT ON
36.6' TO LT EDGE PAVEMENT
 S.L.M. 1393+92.00



Grid: Northing: 598670.746 Easting: 1839010.974

FD SM.R.R.SPIKE
 AT SURFACE
 7/29/96, MB

SET P.K./WASHER
 10/4/96, BVD



O.D.O.T. DISTRICT 2 SURVEY OFFICE

PERSONNEL

REFERENCE NO. _____

SHEET 6 OF _____

NOTES HOFFMAN

H.C. BARNHISEL

DATE 10-25-88

ROUTE US 20

R.C. LOSHKLE

WEATHER P. CLEAR

COUNTY SANDUSKY

TEMP. 40°

TOWNSHIP GREEN CREEK

SECTION 13

T4 NR 16 E

TYPE MONUMENT P.K. NAIL *set small* R.R. Spike 7-5-89 *US*

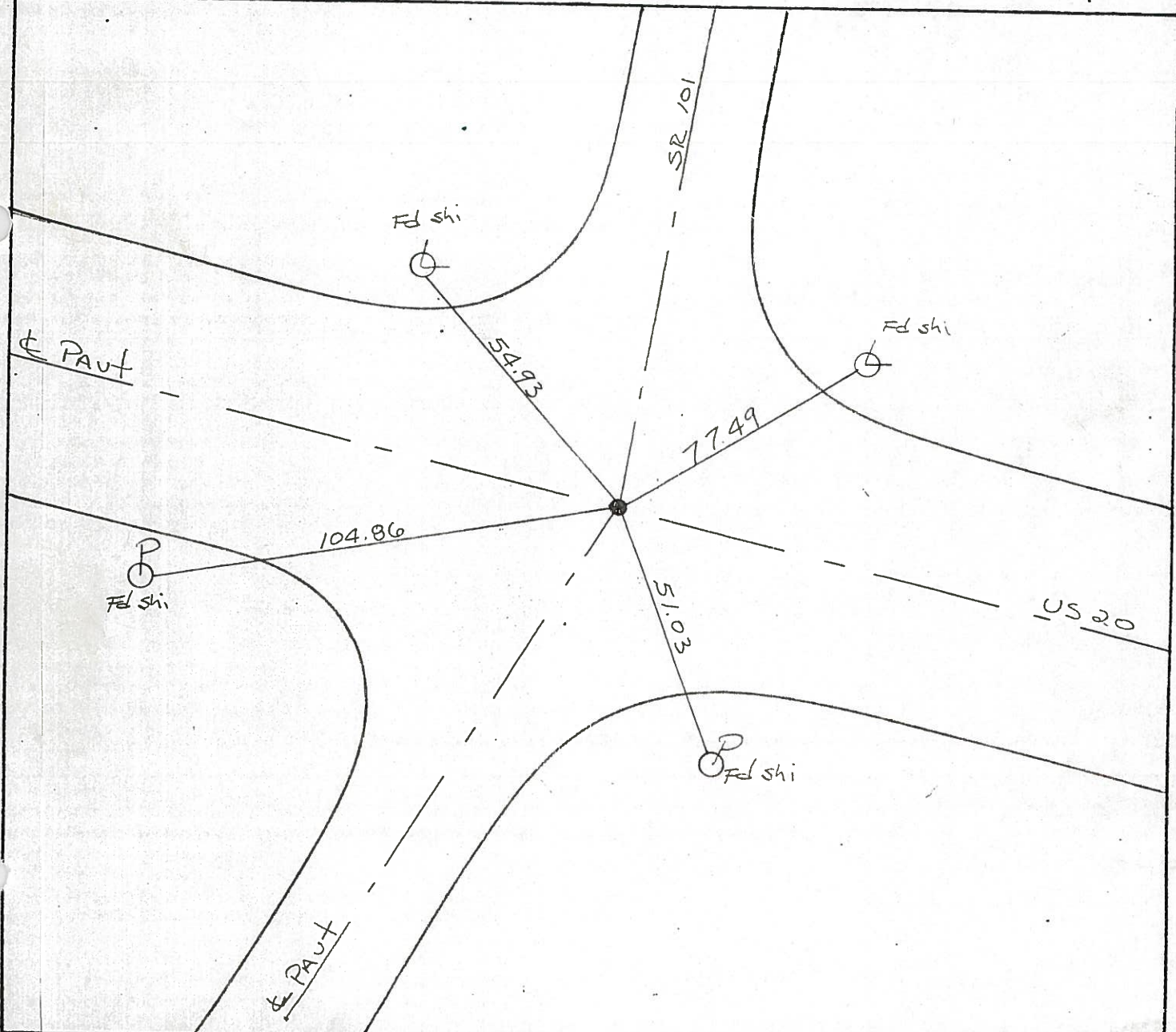
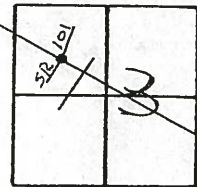
ON SURFACE - BELOW YES

LEFT- & PAVT. - RIGHT YES

TO EDGE PAVEMENT *ON & Pavt* *NOR 74 ON SR 101*

S.L.M. 1394+28

61



O.D.O.T. DISTRICT 2 SURVEY OFFICE

PERSONNEL _____

REFERENCE NO. _____

SHEET 6 OF _____

NOTES HOFFMAN

H.C. BARNHISEL

DATE 10-25-88

ROUTE US 20

R.C. LOHRKE

WEATHER P. CLEAR

COUNTY SANDUSKY

TEMP. 40°

TOWNSHIP GREEN CREEK

SECTION 13

T4 NR 16 E

TYPE MONUMENT P.K. Nail

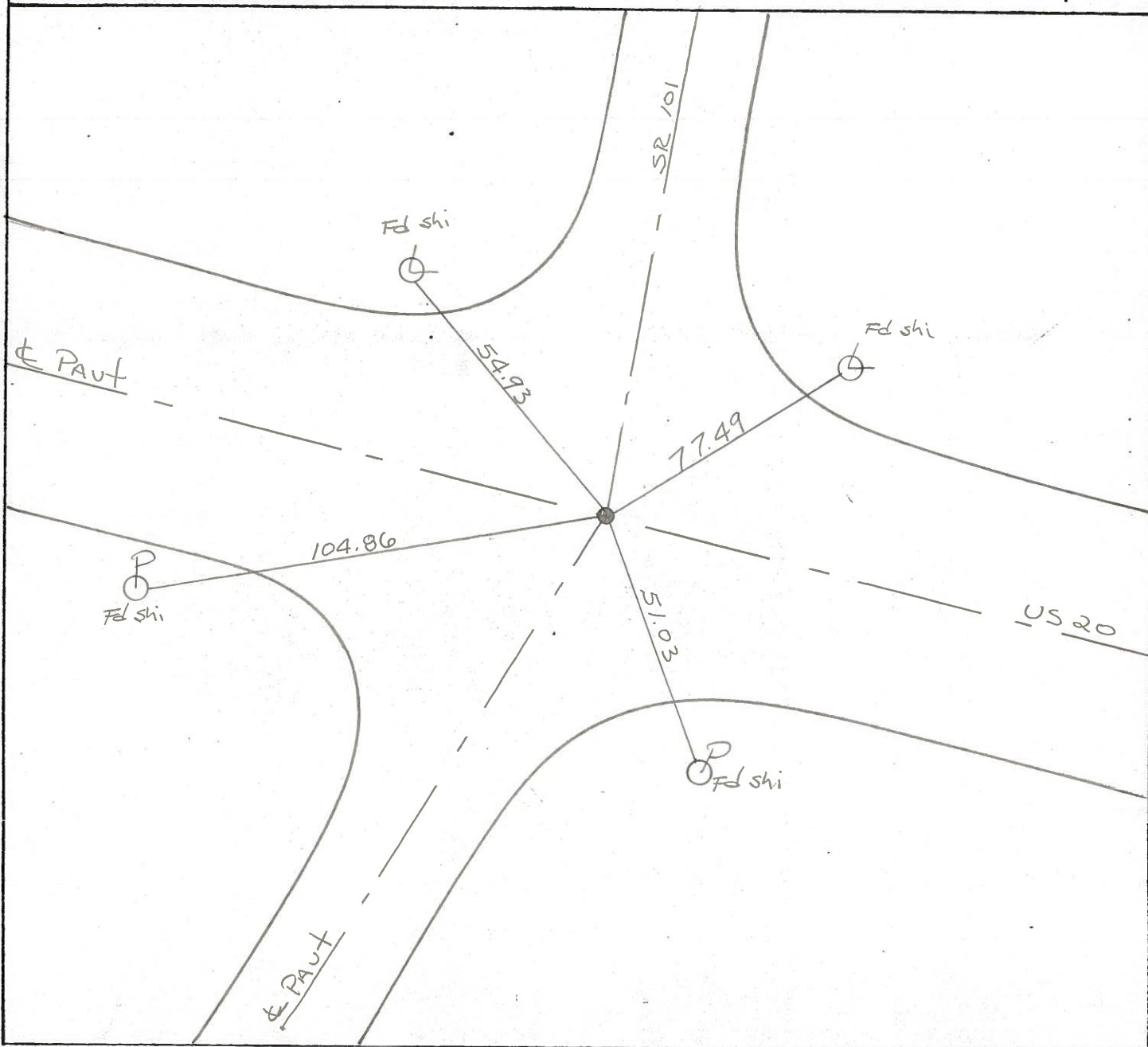
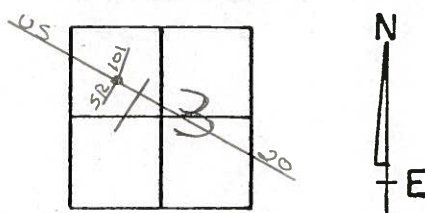
ON SURFACE - BELOW YES

LEFT- & PAV'T. - RIGHT YES

TO EDGE PAVEMENT ON & Pavt
NOR TH ON SR 101

S.L.M. 1394 + 28

61



County Sandusky S.R. US#20

Date 8 May 85

Township Green Creek

Weather Sunny

Section 13

Temp. 66°

T N, R E

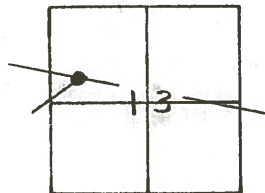
Personnel L. Stone

R. Michalak

D. Curtis

J. Householder

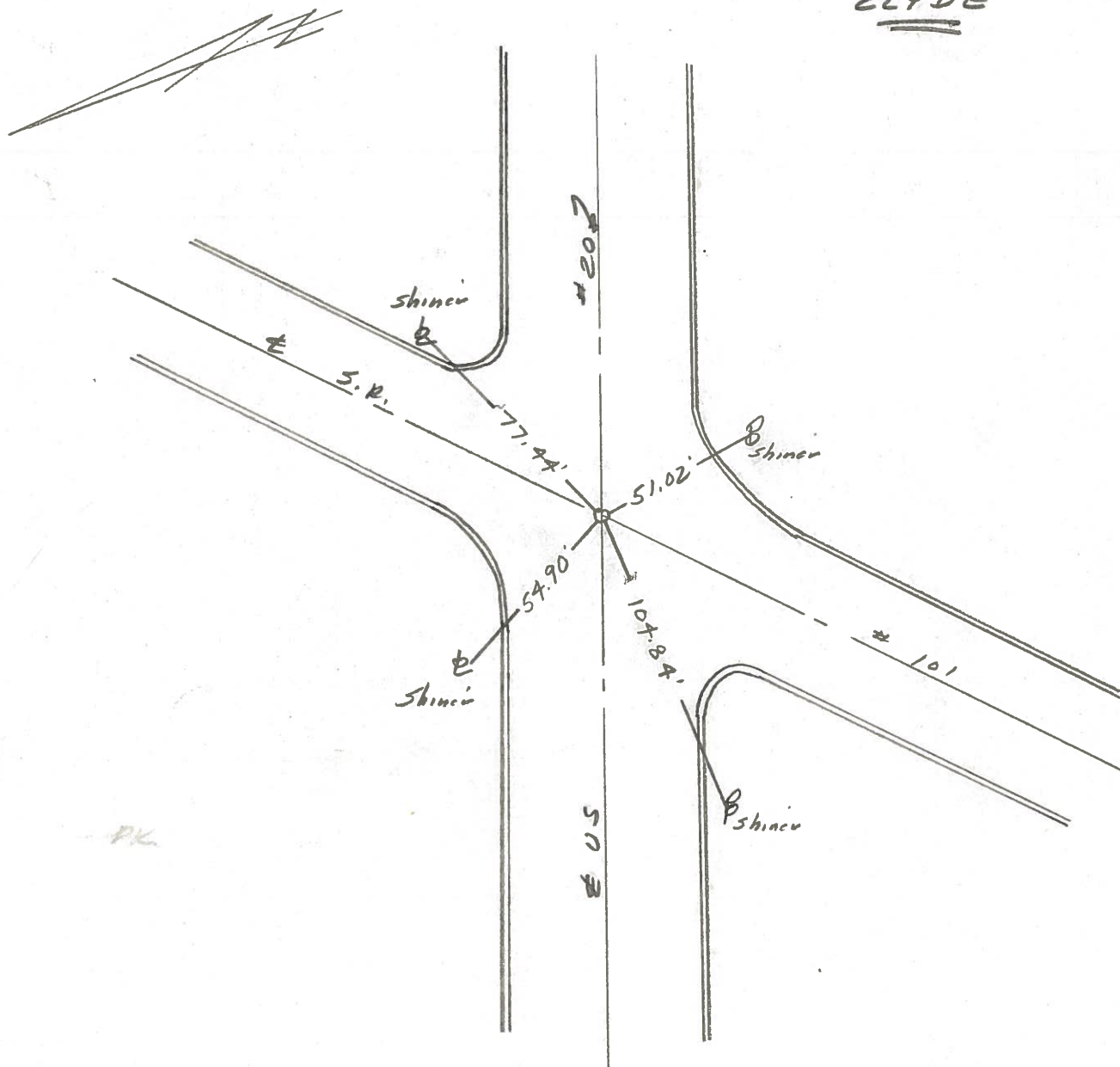
61



1394+28

REF. NO.
Set PK Nail 8/25/86

CLYDE



PERSONNEL TITLE PERSONNEL TITLE

COUNTY Sandusky DATE 1-27-72

S. R. U.S. #20 WEATHER Fair

SEC. 13 TEMP. 32°

DESCRIPTION Clyde LEFT CENTER LINE RIGHT JOB NO. _____

East corp. Clyde

61

P. O. T.
1359+41.18
1359+40.69
2 - P.K. Nails

S.R. #101

S.R. #101

54

P. O. T.
1354+01.60
Fd. spk.

Reset P.K. Nail



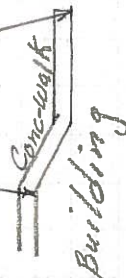
Cor. of steel plate
Light post

55.79'

North St.

73.11'
Plumbed
70.69'

Top 2nd brick



PERSONNEL TITLE PERSONNEL TITLE

COUNTY Sandusky DATE

S. R. #20 WEATHER

SEC. TEMP.

DESCRIPTION LEFT CENTER LINE RIGHT JOB NO.

