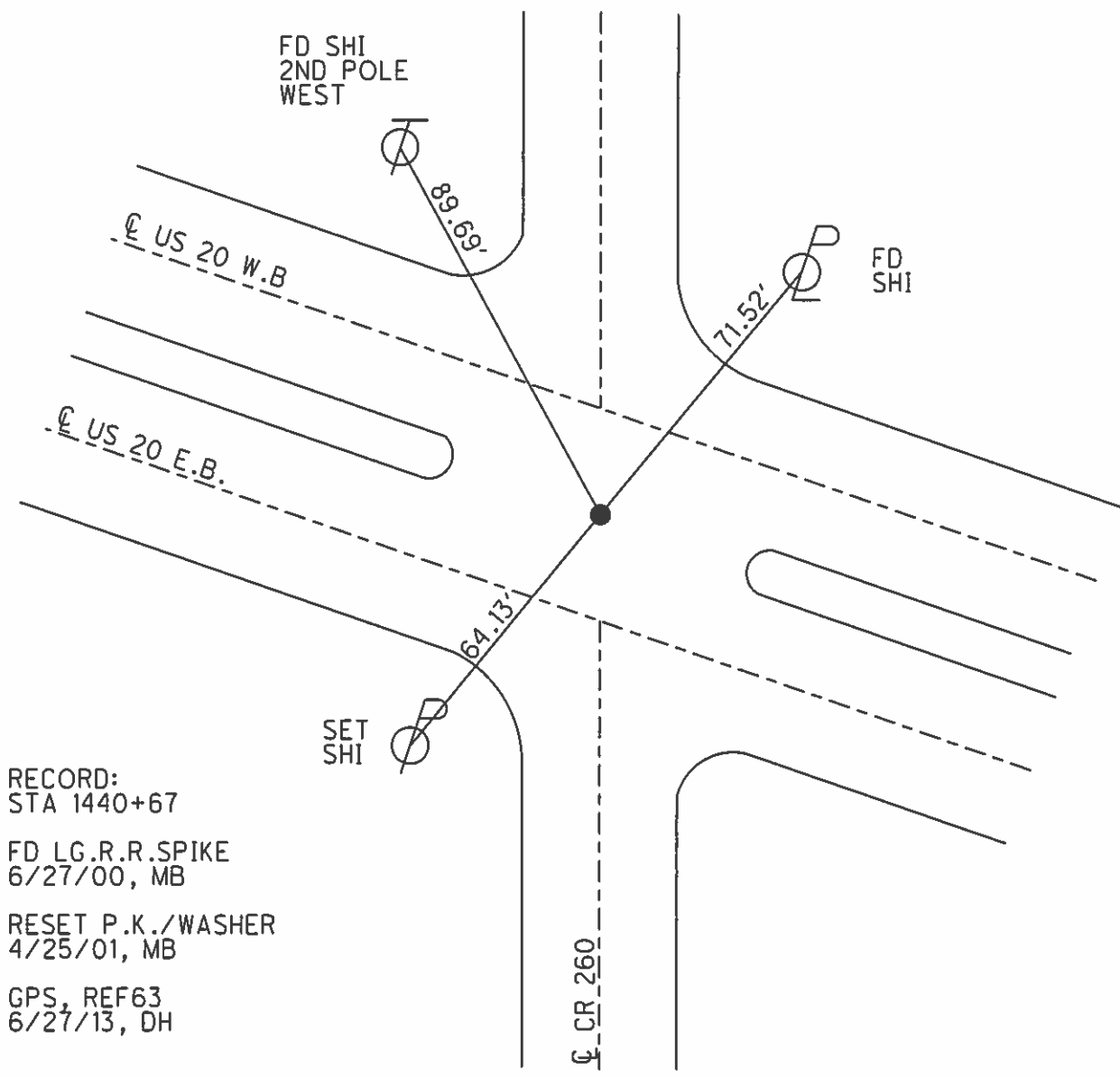
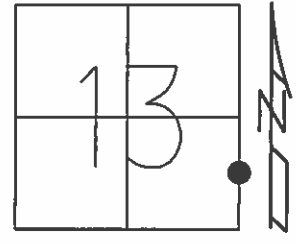


O.D.O.T. DISTRICT 2 SURVEY OFFICE (USE ONLY)

PERSONNEL _____ REFERENCE NO. 63 SHEET 4 OF 9
NOTES WESTFALL DATE 6/27/13 ROUTE SR 20
H.C. ROUSOS WEATHER CLEAR COUNTY SANDUSKY
R.C. HOMAN TEMP. 70° TOWNSHIP GREEN CREEK
SECTION 13
T 4 N R 16 E

TYPE MONUMENT P.K./WASHER
ON SURFACE - ~~BELOW~~ ON
LEFT - ☉ PAV'T - RIGHT ON
10.3' RT TO RT EDGE PAVEMENT W.B.
S.L.M. 1440+28.69
Grid: Northing: 597081.338 Easting: 1843366.635



RECORD:
STA 1440+67
FD LG.R.R.SPIKE
6/27/00, MB
RESET P.K./WASHER
4/25/01, MB
GPS, REF63
6/27/13, DH

Resurveyed 2000

O.D.O.T. DISTRICT 2 SURVEY OFFICE

SHEET 9 OF

County Sandusky S.R. US#20

Date 8 May 85

Township Green Creek

Weather Sunny

Section 13

Temp. 66°

T N, R E

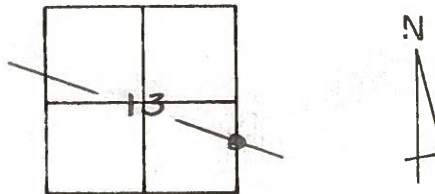
Personnel I. Stone

R. Michalak

D. Curtis

J. Hauschold

63



1440+67

REF. No.

FD RES pt. 3" deep 8/25/06

