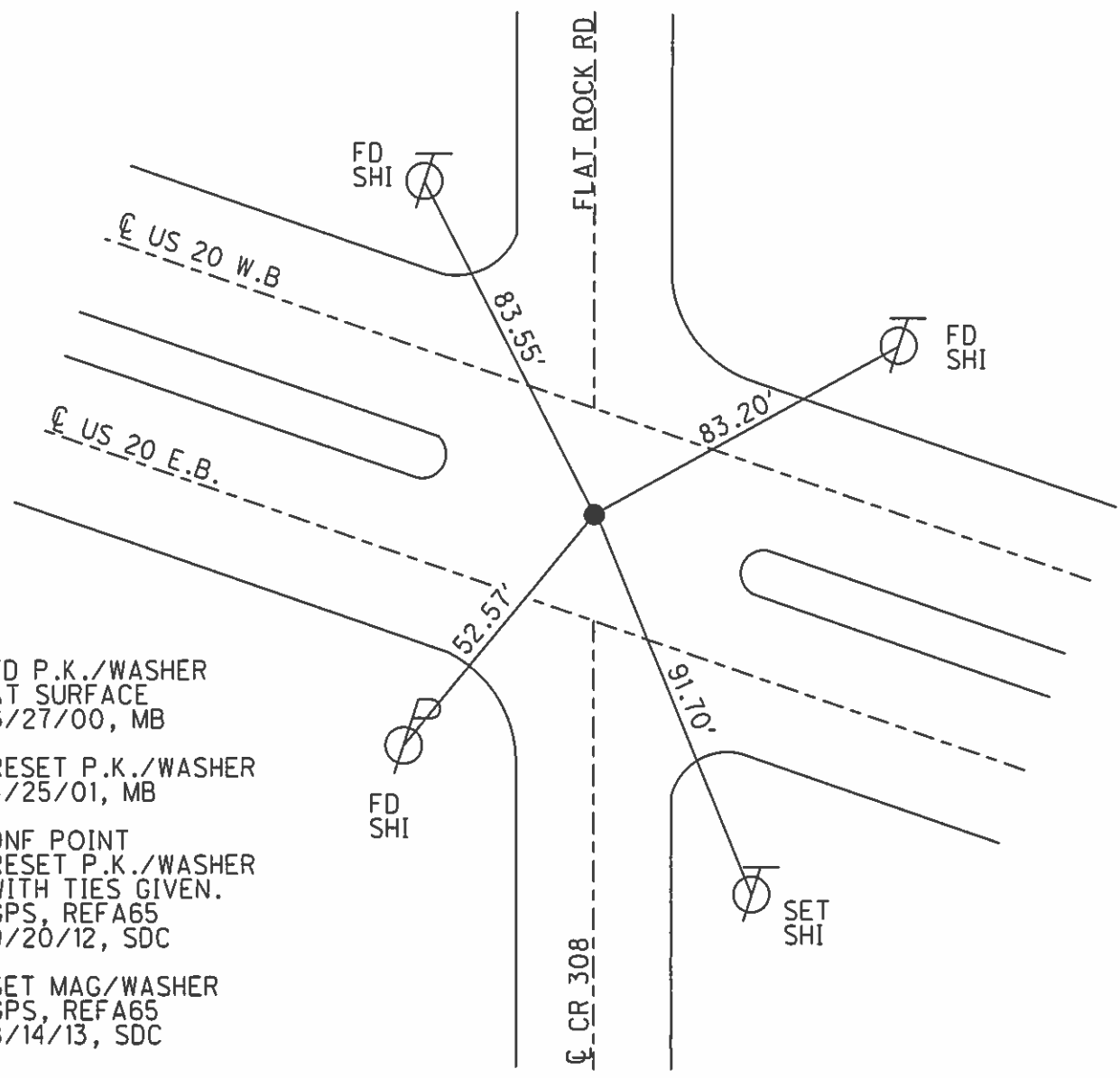
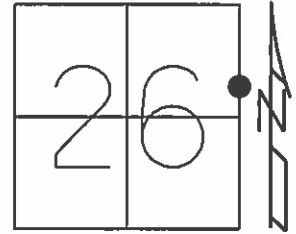


O.D.O.T. DISTRICT 2 SURVEY OFFICE (USE ONLY)

PERSONNEL _____ REFERENCE NO. 65 SHEET 6 OF 9
 NOTES CODER _____ DATE 9/20/12 ROUTE SR 20
 H.C. RHOADES WEATHER CLEAR COUNTY SANDUSKY
 R.C. HUSS TEMP. 70° TOWNSHIP YORK
 _____ CANTERBURY SECTION 26
 _____ T 4 N R 17 E

TYPE MONUMENT MAG/WASHER
 ON SURFACE - ~~BELOW~~ ON
 LEFT - ☉ PAV'T - RIGHT -
9.9' RT TO RT EDGE PAVEMENT W.B.
S.L.M. 1720+84.34
 Grid: Northing: 587530.944 Easting: 1869746.748



FD P.K./WASHER
 AT SURFACE
 6/27/00, MB
 RESET P.K./WASHER
 4/25/01, MB
 DNF POINT
 RESET P.K./WASHER
 WITH TIES GIVEN.
 GPS, REFA65
 9/20/12, SDC
 SET MAG/WASHER
 GPS, REFA65
 8/14/13, SDC

County Sandusky S.R. US#20

Date 8 May 85

Township York

Weather Sunny

Section 26

Temp. 66°

T_N, R_E

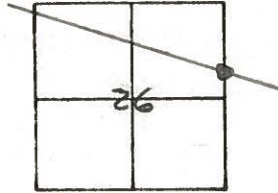
Personnel L. Stone

R. Michalak

D. Curtis

J. Housholder

(65)



1721+37

REF. NO.

Set PK No. 1) 8/25/86

NOTE:
ORIGIN UNKNOWN
NOT ON SEC. LINE OR
U.S. 20.

As PER J. CRONIN
6-9-88

