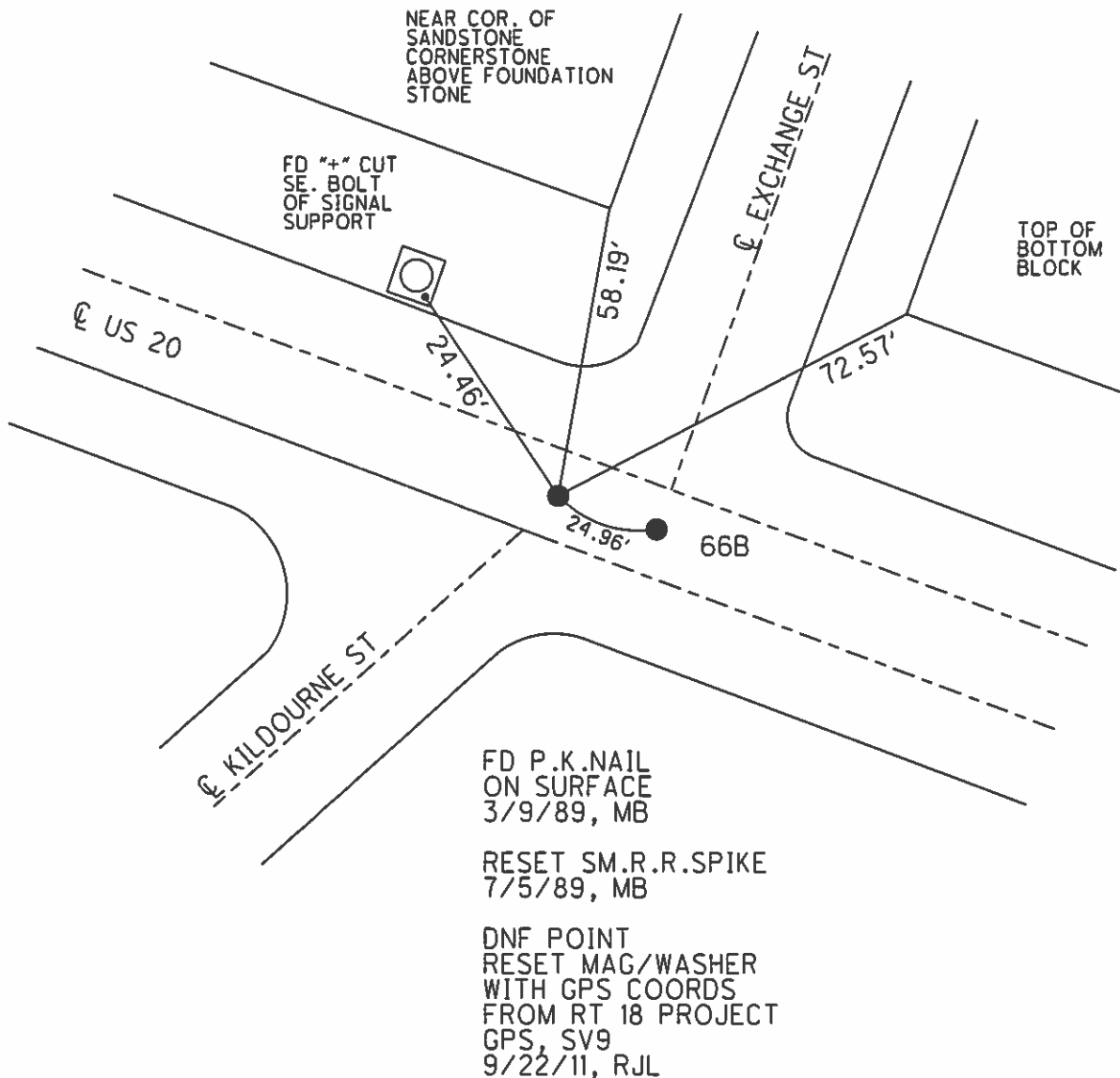
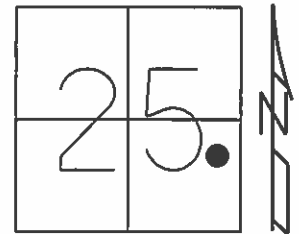


O.D.O.T. DISTRICT 2 SURVEY OFFICE (USE ONLY)

PERSONNEL \_\_\_\_\_ REFERENCE NO. 66 A SHEET 8 OF 9  
 NOTES HOFFMAN DATE 3/9/89 ROUTE SR 20  
 H.C. BARNHISEL WEATHER CLEAR COUNTY SANDUSKY  
 R.C. LOEHRKE TEMP. 40° TOWNSHIP YORK  
 \_\_\_\_\_ SECTION 25  
 \_\_\_\_\_ T 4 N R 17 E

TYPE MONUMENT P.K.NAIL  
 ON SURFACE - ~~BELOW~~ ON \_\_\_\_\_  
 LEFT - ☉ PAV'T - RIGHT ON \_\_\_\_\_  
 - TO - EDGE PAVEMENT  
 S.L.M. 1773+10.0  
 Grid: Northing: 585717.560 Easting: 1874647.273



# O.D.O.T. DISTRICT 2 SURVEY OFFICE

PERSONNEL

REFERENCE NO. 66 A/B

SHEET 2 OF 3

NOTES HOFFMAN

H.C. BARNHISEL

DATE 3-9-89

ROUTE US 20

R.C. LOEHLKE

WEATHER CLEAR

COUNTY SANDUSKY

TEMP. 40°

TOWNSHIP YORK

SECTION 25

T. 4 N. R. 17 E

Reset Sm. R.R. Spikes

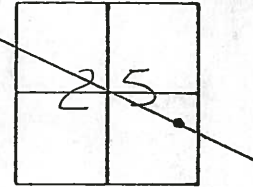
TYPE MONUMENT P.K. Nails 7-5-89

ON SURFACE - ~~BELOW~~ YES

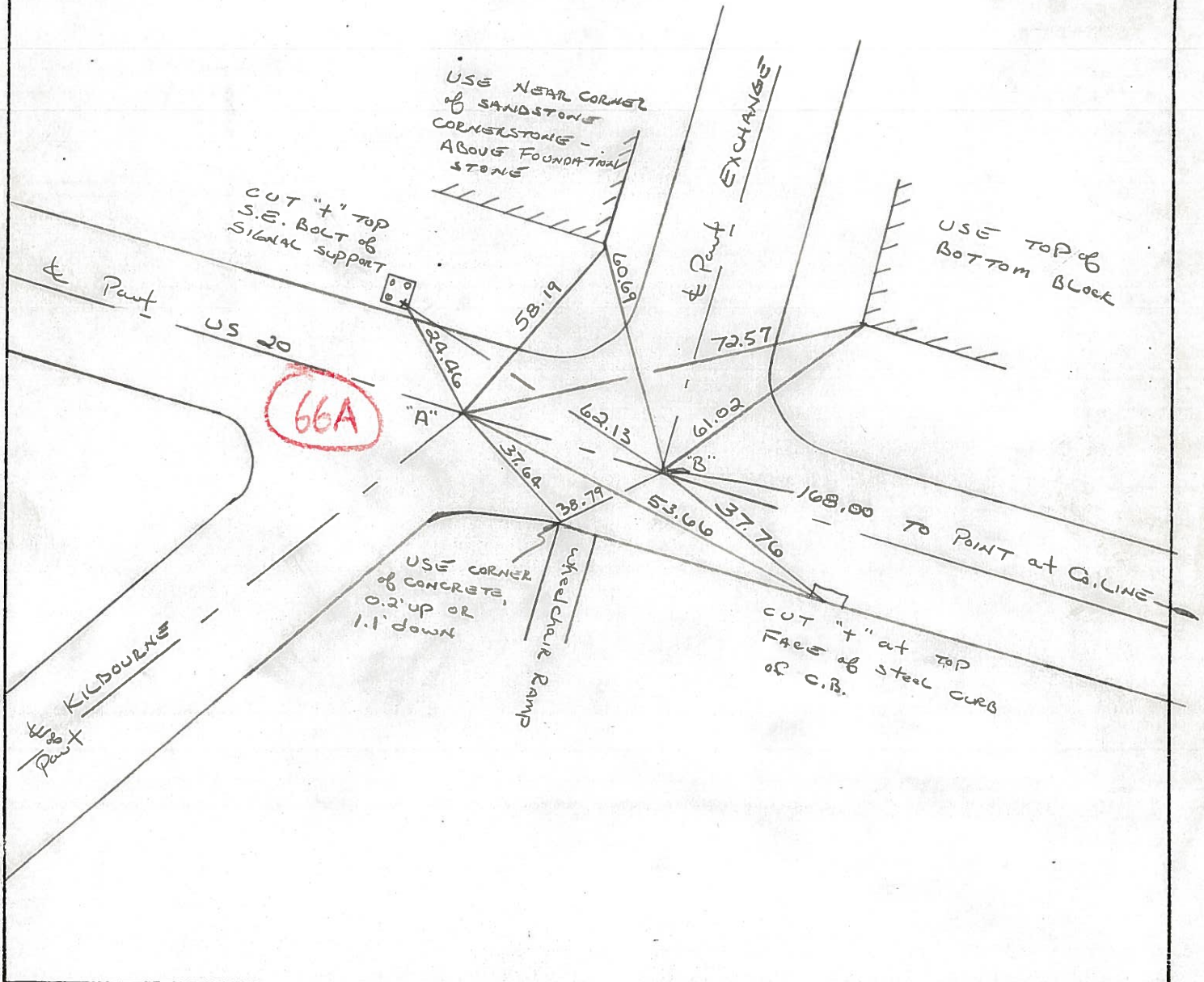
~~LEFT- & PAV'T. - RIGHT~~ YES

TO EDGE PAVEMENT

S.L.M. 1774+77 at Point "A"



24.96 Between



O.D.O.T. DISTRICT 2 SURVEY OFFICE

SHEET 12 OF

County Sandusky S.R. 05#20

Date 7 May 85

Township York

Weather Sunny

Section 25

Temp. 65°

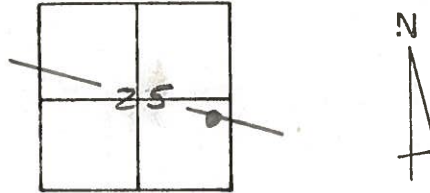
T N, R E

Personnel I. Stone

R. Michalak

D. Curtis

J. Hauscholder



1773+65

1773+90

REF. No.

Set Marking Spks 8/25/86

BELLEVUE

