

O.D.O.T. DISTRICT 2 SURVEY OFFICE (USE ONLY)

PERSONNEL

REFERENCE NO. 67

SHEET 10 OF 10

NOTES HOFFMAN

DATE 3/9/89

ROUTE US 20

H.C. BARNHISEL

WEATHER CLEAR

COUNTY SANDUSKY

R.C. LOEHRKE

TEMP. 40°

TOWNSHIP YORK

SECTION 25

DWG BY NIESE

PID _____

T 4 N R 17 E

TYPE MONUMENT HOLE

ON SURFACE - BELOW -

OFFSET \odot PAVEMENT ON LT : RT

- TO - EDGE PAVEMENT

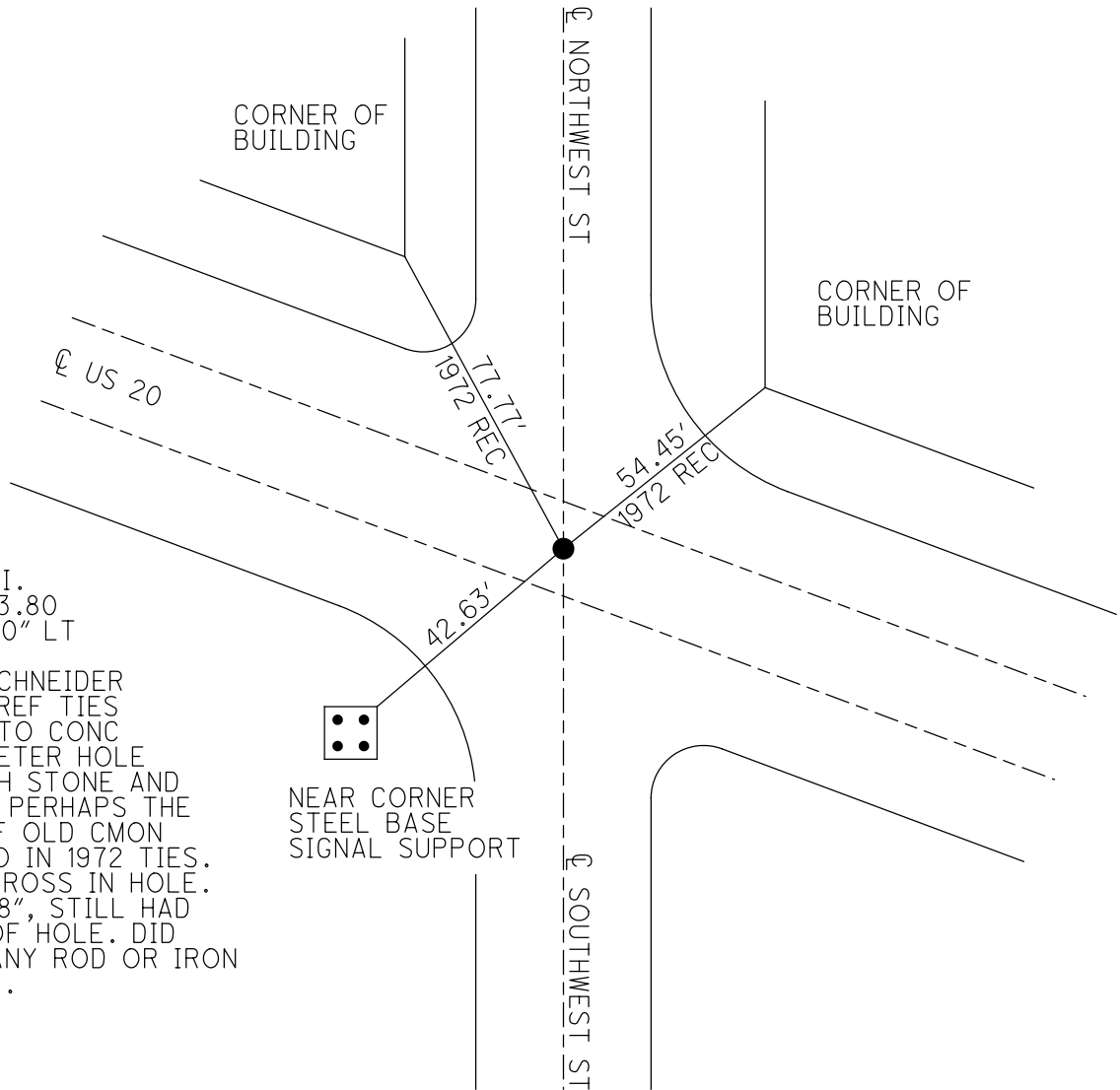
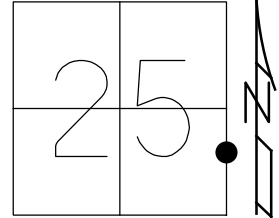
STATION: 1776+72

HORZ.DATUM: _____

GEOID: _____

GRID: NORTHING: _____

EASTING: _____



RECORD: P.I.
 STA 363+03.80
 $\Delta = 09^{\circ}45'00''$ LT
 FD CMON
 1/26/72, SCHNEIDER
 USED 1972 REF TIES
 DUG DOWN TO CONC
 FD 6" DIAMETER HOLE
 FILLED WITH STONE AND
 CONCRETE. PERHAPS THE
 REMAINS OF OLD CMON
 REFERED TO IN 1972 TIES.
 OLD TIES CROSS IN HOLE.
 DUG DOWN 8", STILL HAD
 EVIDENCE OF HOLE. DID
 NOT FIND ANY ROD OR IRON
 OF AN KIND.

O.D.O.T. DISTRICT 2 SURVEY OFFICE

PERSONNEL _____

REFERENCE NO. 67

SHEET 3 OF 3

NOTES HOFFMAN

H.C. BARANISZ

R.C. LOEHRKE

DATE 3-9-89

WEATHER CLEAR

TEMP. 40°

ROUTE US 20

COUNTY SANDUSKY

TOWNSHIP YORK

SECTION 25

T 4 N R 17 E

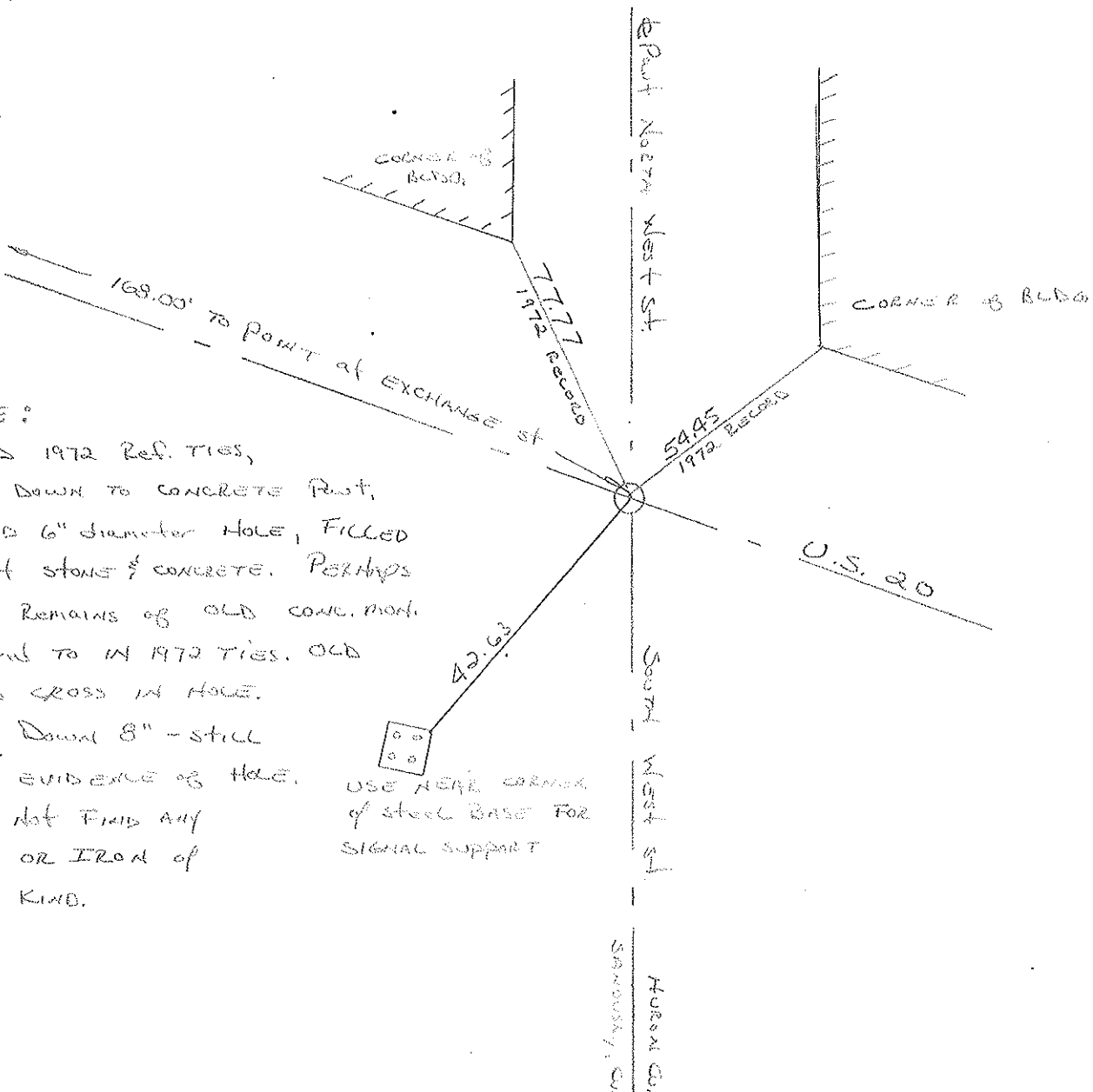
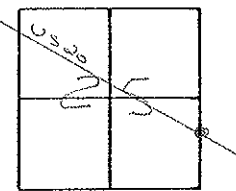
TYPE MONUMENT _____

ON SURFACE - BELOW _____

LEFT - C. PAV'T. - RIGHT _____

TO _____ EDGE PAVEMENT

S.L.M. 1776+72



NOTE:

USED 1972 REF. TIES,
 DUG DOWN TO CONCRETE FOOT,
 FOUND 6" DIAMETER HOLE, FILLED
 WITH STONE & CONCRETE. PERHAPS
 THE REMAINS OF OLD CONC. MON.
 REFERRED TO IN 1972 TIES. OLD
 TIES CROSS IN HOLE.
 DUG DOWN 8" - STILL
 HAD EVIDENCE OF HOLE.
 DID NOT FIND ANY
 ROD OR IRON OF
 ANY KIND.

USE HERE CORNER
 OF STEEL BASE FOR
 SIGNAL SUPPORT

PERSONNEL	TITLE	PERSONNEL	TITLE	COUNTY	DATE	WEATHER	TEMP.
Schneider				Sandusky	1-26-72	Fair	40°
Mosser				S. R. U.S. #20			
Barbour				SEC. 25			
Vinson							

DESCRIPTION Bellevue LEFT CENTER LINE RIGHT JOB NO. _____

