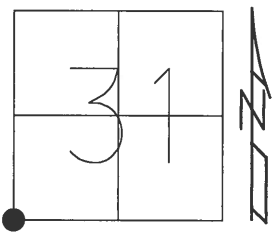


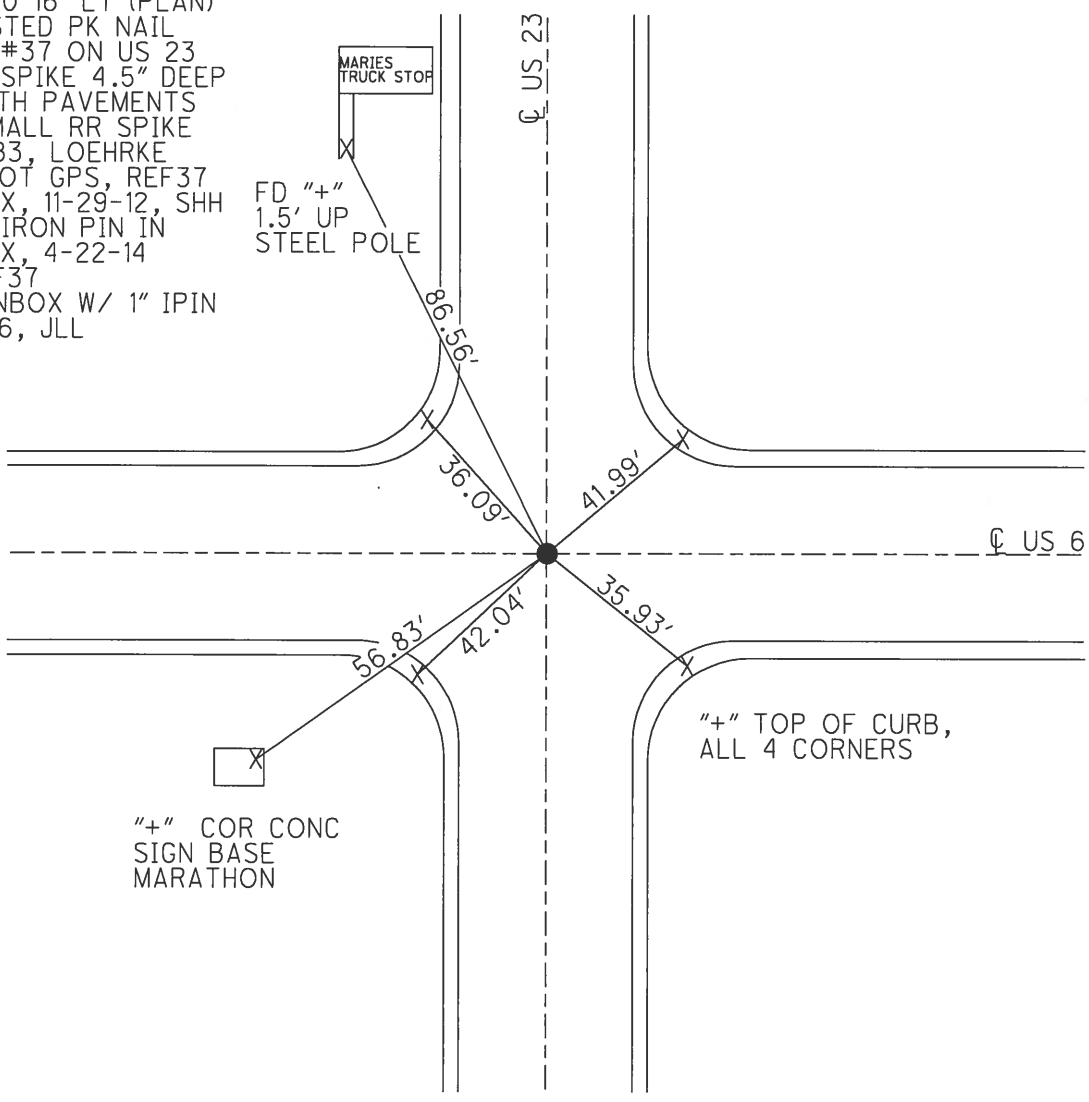
O.D.O.T. DISTRICT 2 SURVEY OFFICE (USE ONLY)

PERSONNEL _____ REFERENCE NO. 13 SHEET 19 OF 51
 NOTES LOEHRKE DATE 7-30-81 ROUTE US 23
 H.C. HOFFMAN WEATHER CLEAR COUNTY SANDUSKY
 R.C. HOUSEHOLDER TEMP. 75° TOWNSHIP MADISON
 _____ SECTION 31
 _____ T 5 N R 13 E

TYPE MONUMENT _____ MONBOX _____
~~ON SURFACE~~ - BELOW _____ 4.5"
 LEFT - \odot PAV'T - RIGHT _____ ON _____
 _____ TO _____ EDGE PAVEMENT
 S.L.M. _____ 318+06
 Grid: Northing: 611428.370 Easting: 1716626.270



RECORD:
 PI $\Delta=00^{\circ}16'$ LT (PLAN)
 FD RUSTED PK NAIL
 NOTE: #37 ON US 23
 FD RR SPIKE 4.5" DEEP
 ON BOTH PAVEMENTS
 SET SMALL RR SPIKE
 9/27/83, LOEHRKE
 FD, SHOT GPS, REF37
 MONBOX, 11-29-12, SHH
 REF37 IRON PIN IN
 MONBOX, 4-22-14
 NEWREF37
 FD MONBOX W/ 1" IPIN
 10-17-16, JLL



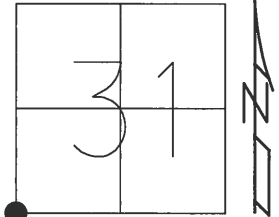
"+" TOP OF CURB,
 ALL 4 CORNERS

O.D.O.T. DISTRICT 2 SURVEY OFFICE (USE ONLY)

PERSONNEL _____ REFERENCE NO. 1 SHEET 1 OF 51

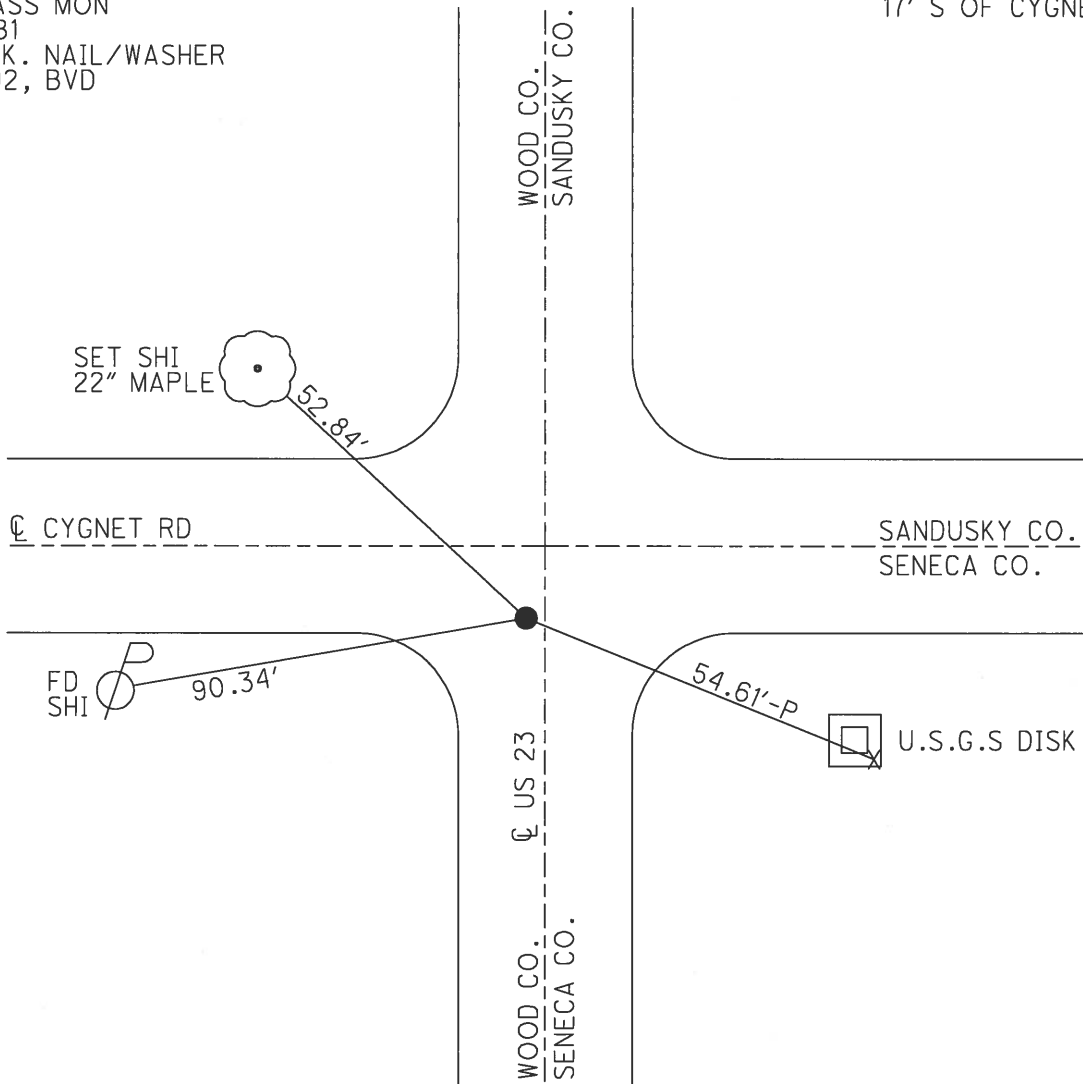
NOTES BARNHISEL DATE 8/12/91 ROUTE US 23
 H.C. VAN DUSEN WEATHER SUNNY COUNTY SANDUSKY
 R.C. KUSZ TEMP. 83° TOWNSHIP SCOTT
 SECTION 31
 T 4 N R 13 E

TYPE MONUMENT P.K. NAIL/WASHER
 ON SURFACE - ~~BELOW~~ ON _____
 LEFT - ☉ PAV'T - ~~RIGHT~~ 0.5'
 - TO - EDGE PAVEMENT
 S.L.M. 0+00
 Grid: Northing: _____ Easting: _____



RECORD:
 FD BRASS MON
 7/29/81
 SET P.K. NAIL/WASHER
 4/16/92, BVD

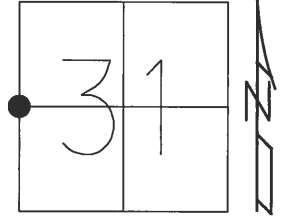
NOTE:
 17' S OF CYGNET RD ☉



O.D.O.T. DISTRICT 2 SURVEY OFFICE (USE ONLY)

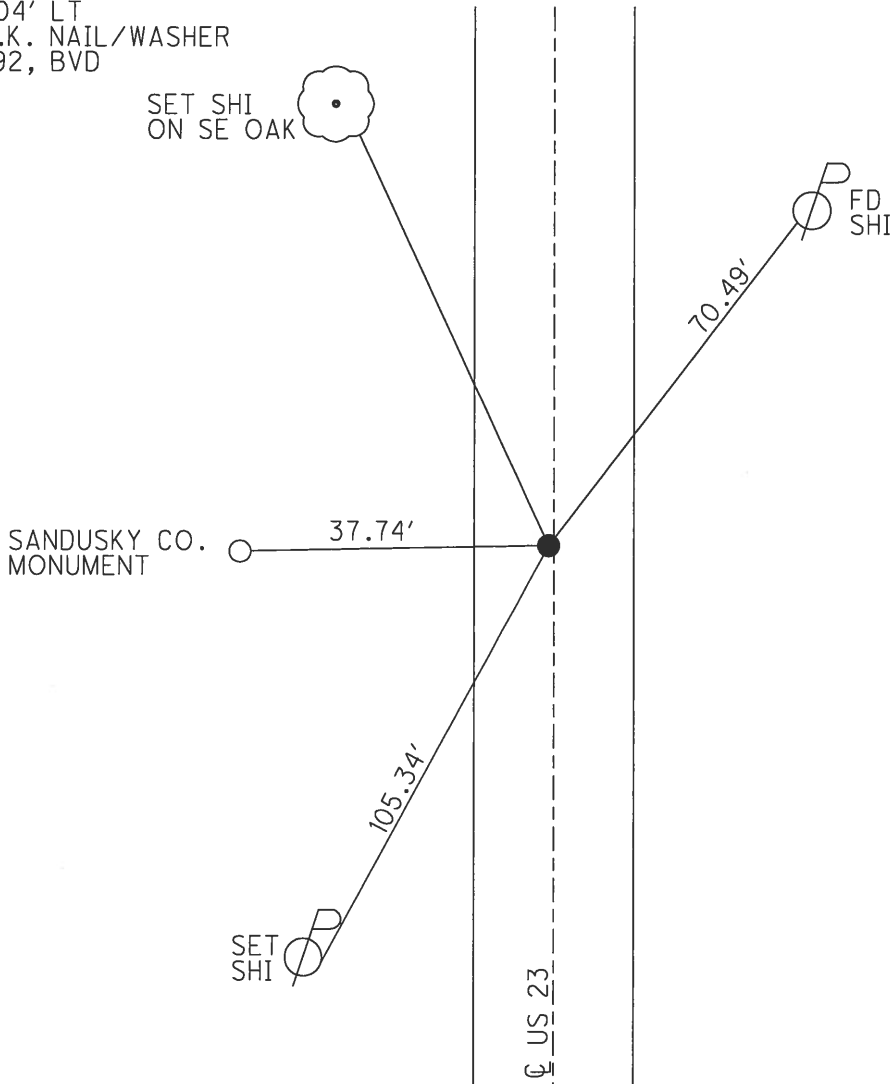
PERSONNEL _____ REFERENCE NO. 2 SHEET 2 OF 51
 NOTES BARNHESEL DATE 8/12/91 ROUTE US 23
 H.C. VAN DUSEN WEATHER SUNNY COUNTY SANDUSKY
 R.C. _____ TEMP. 83° TOWNSHIP SCOTT
 _____ SECTION 31
 _____ T 4 N R 13 E

TYPE MONUMENT P.K. NAIL/WASHER
 ON SURFACE - ~~BELOW~~ ON _____
 LEFT - ☉ PAV'T - ~~RIGHT~~ 0.5'
12.6' TO LT EDGE PAVEMENT
 S.L.M. 26+34



Grid: Northing: _____ Easting: _____

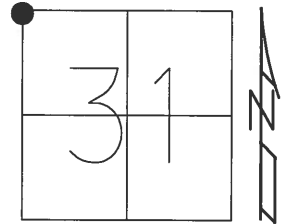
RECORD:
 $\Delta = 0^{\circ}04'$ LT
 SET P.K. NAIL/WASHER
 4/16/92, BVD



O.D.O.T. DISTRICT 2 SURVEY OFFICE (USE ONLY)

PERSONNEL _____ REFERENCE NO. 3 SHEET 3 OF 51
 NOTES BARNHISEL DATE 8/12/91 ROUTE US 23
 H.C. VAN DUSEN WEATHER SUNNY COUNTY SANDUSKY
 R.C. _____ TEMP. 83° TOWNSHIP SCOTT
 _____ SECTION 31
 T 4 N R 13 E

TYPE MONUMENT _____ P.K. NAIL/WASHER
 ON SURFACE - ~~BELOW~~ ON _____
 LEFT - ☉ PAV'T - RIGHT ON _____
 _____ TO _____ EDGE PAVEMENT
 S.L.M. 53+08



Grid: Northing: _____ Easting: _____

RECORD:
 $\Delta = 0^{\circ}02'$ RT
 SET P.K. NAIL/WASHER
 4/27/92, BVD

NOTE:
 DISTANCE BETWEEN
 POINTS 85.82'

