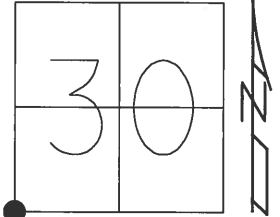


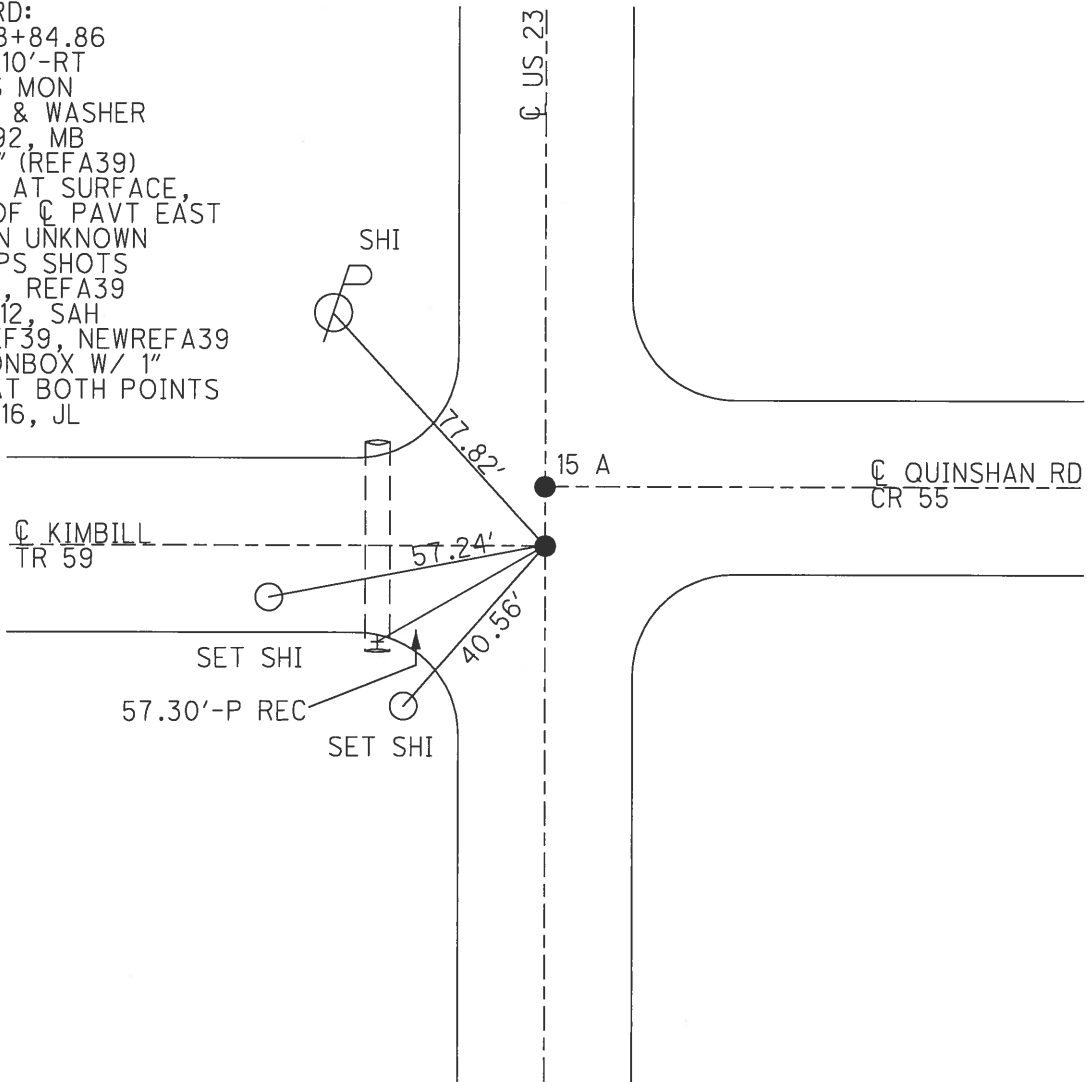
O.D.O.T. DISTRICT 2 SURVEY OFFICE (USE ONLY)

PERSONNEL	REFERENCE NO.	<u>15</u>	SHEET	<u>21</u>	OF	<u>51</u>
NOTES	<u>RHOADES</u>	DATE	<u>4-21-14</u>	ROUTE	<u>US 23</u>	
H.C.	<u>ROUSOS</u>	WEATHER	<u>CLOUDY</u>	COUNTY	<u>SANDUSKY</u>	
R.C.	<u>GABLE</u>	TEMP.	<u>62°</u>	TOWNSHIP	<u>MADISON</u>	
	<u>HOMAN</u>			SECTION	<u>30</u>	
				T	<u>5</u>	R
				N	<u>13</u>	E

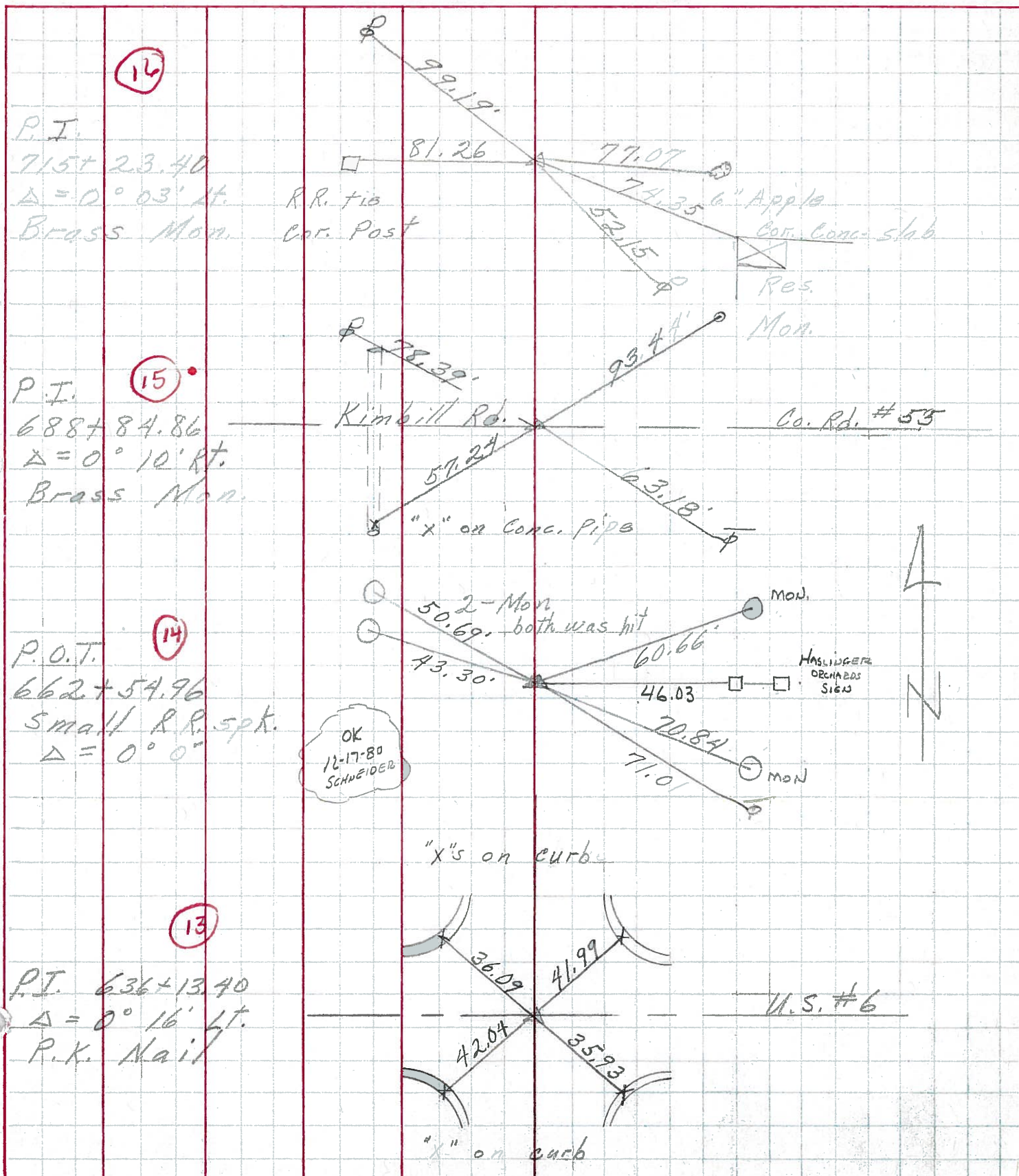
TYPE MONUMENT P.K. NAIL/WASHER
 ON SURFACE - ~~BELOW~~ ON
 LEFT - Q PAV'T - RIGHT ON
12.6 TO RT EDGE PAVEMENT
 S.L.M. 370+78
 Grid: Northing: 616698.528 Easting: 1716759.626



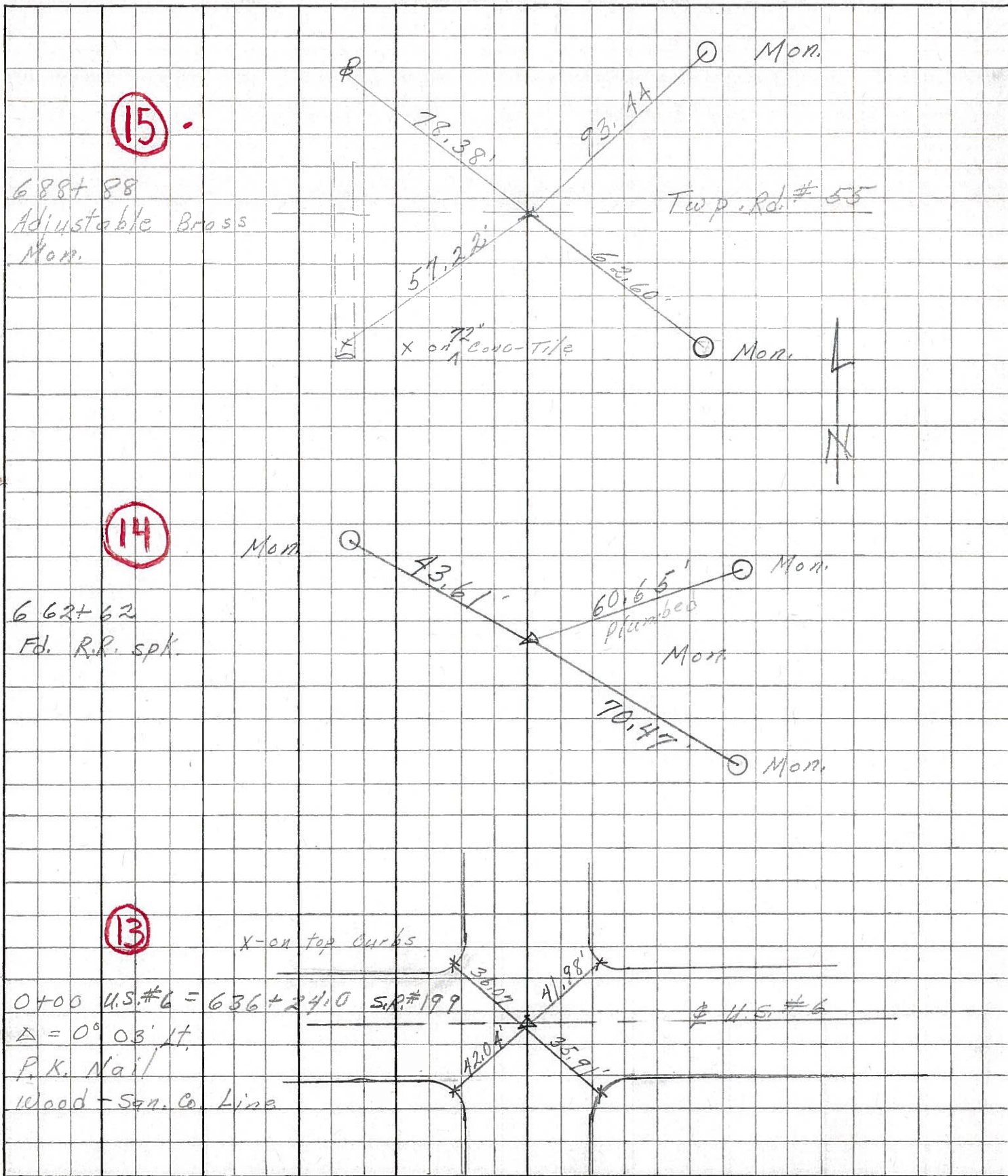
RECORD:
 PI 688+84.86
 $\Delta=0^{\circ}-10'-RT$
 BRASS MON
 FD PK & WASHER
 4-14-92, MB
 PT "B" (REFA39)
 FD PK AT SURFACE,
 3' N OF Q PAVT EAST
 ORIGIN UNKNOWN
 FD, GPS SHOTS
 REF39, REFA39
 11-29-12, SAH
 NEWREF39, NEWREFA39
 FD MONBOX W/ 1"
 IPIN AT BOTH POINTS
 10-17-16, JL



PERSONNEL	TITLE	PERSONNEL	TITLE	COUNTY	DATE	S. R.	WEATHER	TEMP.
Schneider				San-Wood	2-5-70	23 (0/6 58.199)	Fair	35°
Mosser								
Barbour								
Potts								
DESCRIPTION <u>Ties for control Points</u>						SEC. <u>U.S. #6 to U.S. #20</u>		
	LEFT	CENTER LINE	RIGHT	JOB NO.				



PERSONNEL	TITLE	PERSONNEL	TITLE	COUNTY	DATE
Schneider		Potts		Sandusky	7-5-67
Mosser				S. R. 199 23	WEATHER Cloudy
Barbour				SEC. U.S. 6 to S.R. 600	TEMP. 70°
Redding					
DESCRIPTION	Ties for Control Points				JOB NO.



PERSONNEL	TITLE	PERSONNEL	TITLE	COUNTY	DATE
Sworden	Notes	Rice		San. Woo	6/29/60
Cronin				23	
Holcombe				S. R. #199	WEATHER Cloudy
Saga				SEC. U.S.#6 North to U.S.#20	TEMP + 80

DESCRIPTION Ties For Control Points JOB NO. _____

