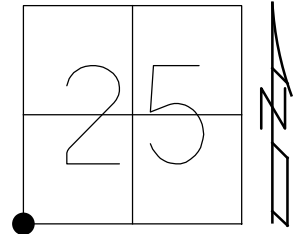


O.D.O.T. DISTRICT 2 SURVEY OFFICE (USE ONLY)

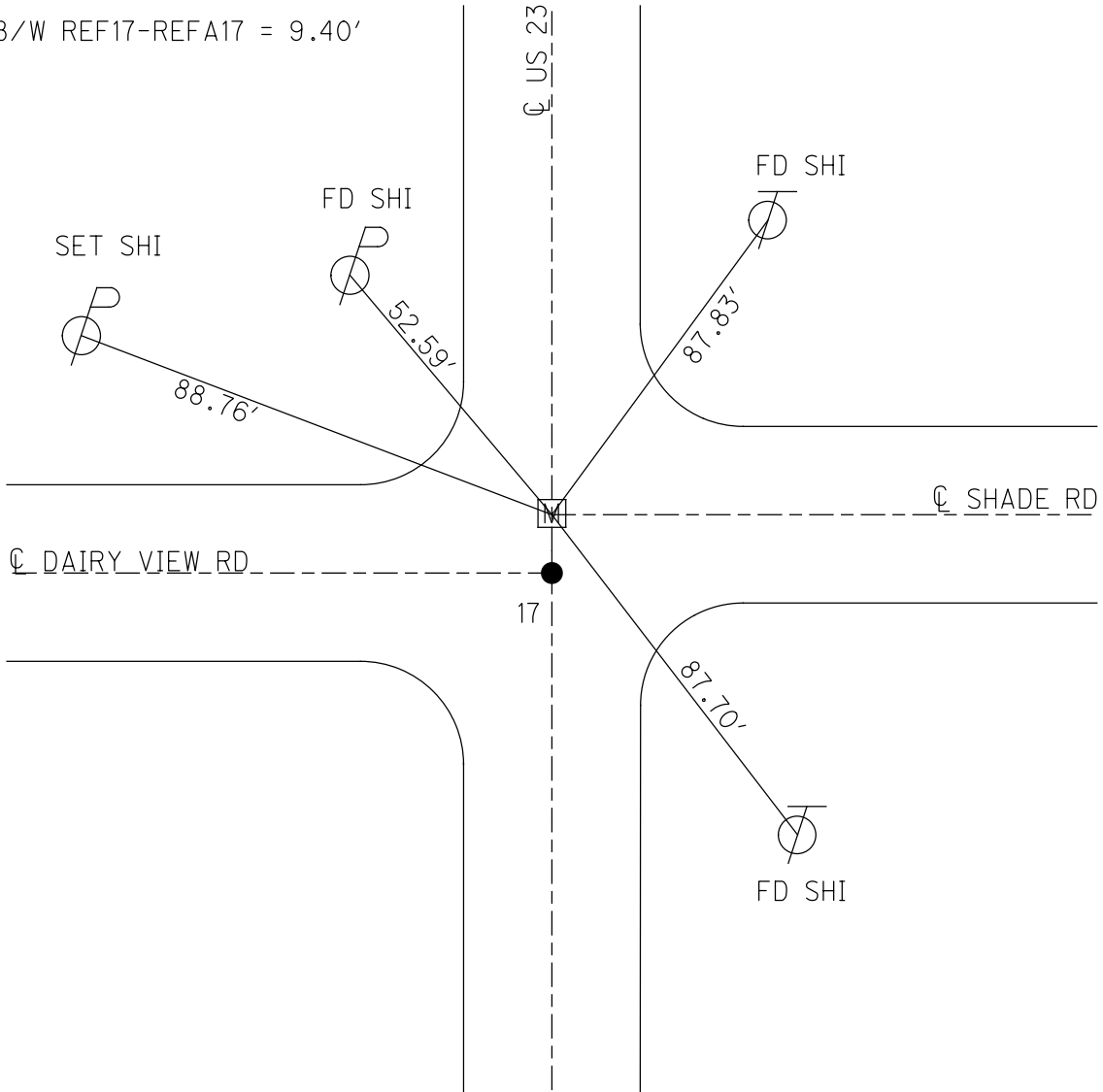
PERSONNEL \_\_\_\_\_ REFERENCE NO. 17 A SHEET 25 OF 51  
 NOTES AUBLE DATE 12-27-2019 ROUTE US 23  
 H.C. LEU WEATHER CLOUDY/WINDY COUNTY SANDUSKY  
 R.C. NIESE TEMP. 55°F TOWNSHIP MADISON  
 \_\_\_\_\_ SECTION 25  
 DWG BY AUBLE PID - T 5 N R 13 E

TYPE MONUMENT MON BOX 3/4" IPIN  
 ON SURFACE - BELOW ON  
 OFFSET  $\text{C}$  PAVEMENT - LT : RT  
- TO - EDGE PAVEMENT  
 STATION: 423+65

HORZ. DATUM: - GEOID: -  
 GRID: NORTHING: 621982.5636 EASTING: 1716906.4933



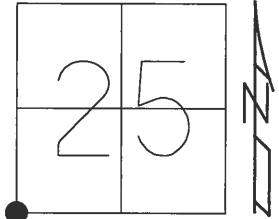
DIST. B/W REF17-REFA17 = 9.40'



O.D.O.T. DISTRICT 2 SURVEY OFFICE (USE ONLY)

PERSONNEL \_\_\_\_\_ REFERENCE NO. 17 A SHEET 25 OF 51  
NOTES \_\_\_\_\_ - \_\_\_\_\_ DATE \_\_\_\_\_ - \_\_\_\_\_ ROUTE US 23  
H.C. \_\_\_\_\_ - \_\_\_\_\_ WEATHER \_\_\_\_\_ - \_\_\_\_\_ COUNTY SANDUSKY  
R.C. \_\_\_\_\_ - \_\_\_\_\_ TEMP. \_\_\_\_\_ - \_\_\_\_\_ TOWNSHIP MADISON  
\_\_\_\_\_ SECTION 25  
\_\_\_\_\_ T 5 N R 13 E

TYPE MONUMENT \_\_\_\_\_ MONBOX \_\_\_\_\_  
ON SURFACE - BELOW \_\_\_\_\_ - \_\_\_\_\_  
LEFT -  $\odot$  PAV'T - RIGHT \_\_\_\_\_ - \_\_\_\_\_  
\_\_\_\_\_ TO \_\_\_\_\_ EDGE PAVEMENT  
S.L.M. \_\_\_\_\_ 423+65  
Grid: Northing: \_\_\_\_\_ - \_\_\_\_\_ Easting: \_\_\_\_\_ - \_\_\_\_\_



RECORD:  
NO DATA IN RECORDS  
NEED TIES PULLED

