

O.D.O.T. DISTRICT 2 SURVEY OFFICE (USE ONLY)

PERSONNEL \_\_\_\_\_ REFERENCE NO. 17 B SHEET 26 OF 51  
 NOTES RHOADES DATE 4-21-14 ROUTE US 23  
 H.C. ROUSOS WEATHER CLOUDY COUNTY SANDUSKY  
 R.C. GABLE TEMP. 62° TOWNSHIP MADISON  
 \_\_\_\_\_ HUMAN \_\_\_\_\_ SECTION 19  
 \_\_\_\_\_ T 5 N R 13 E

TYPE MONUMENT \_\_\_\_\_ P.K. NAIL SHANK \_\_\_\_\_

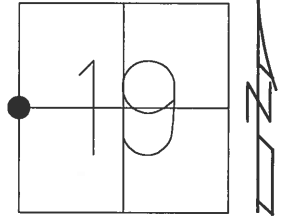
~~ON SURFACE~~ - BELOW 1"

LEFT - ☑ PAV'T - RIGHT ON

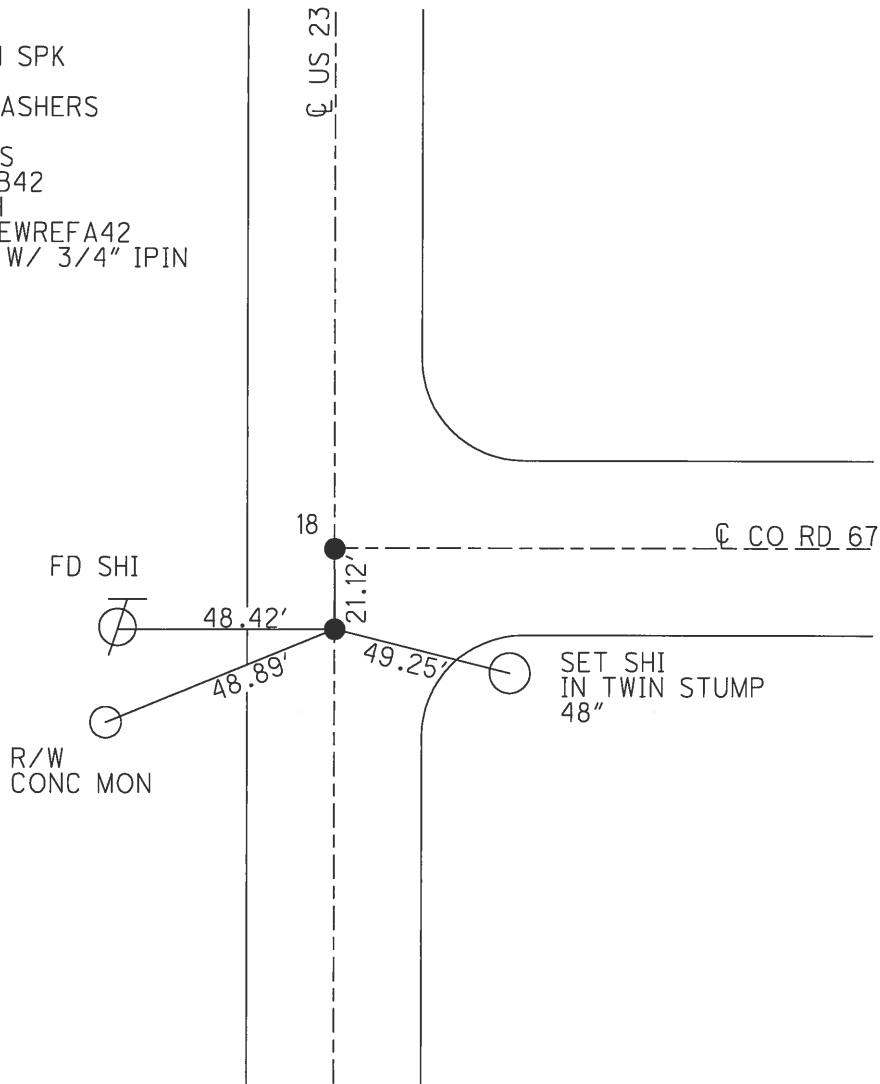
11.9 TO LT EDGE PAVEMENT

S.L.M. 449+89

Grid: Northing: 624606.691 Easting: 1716974.343

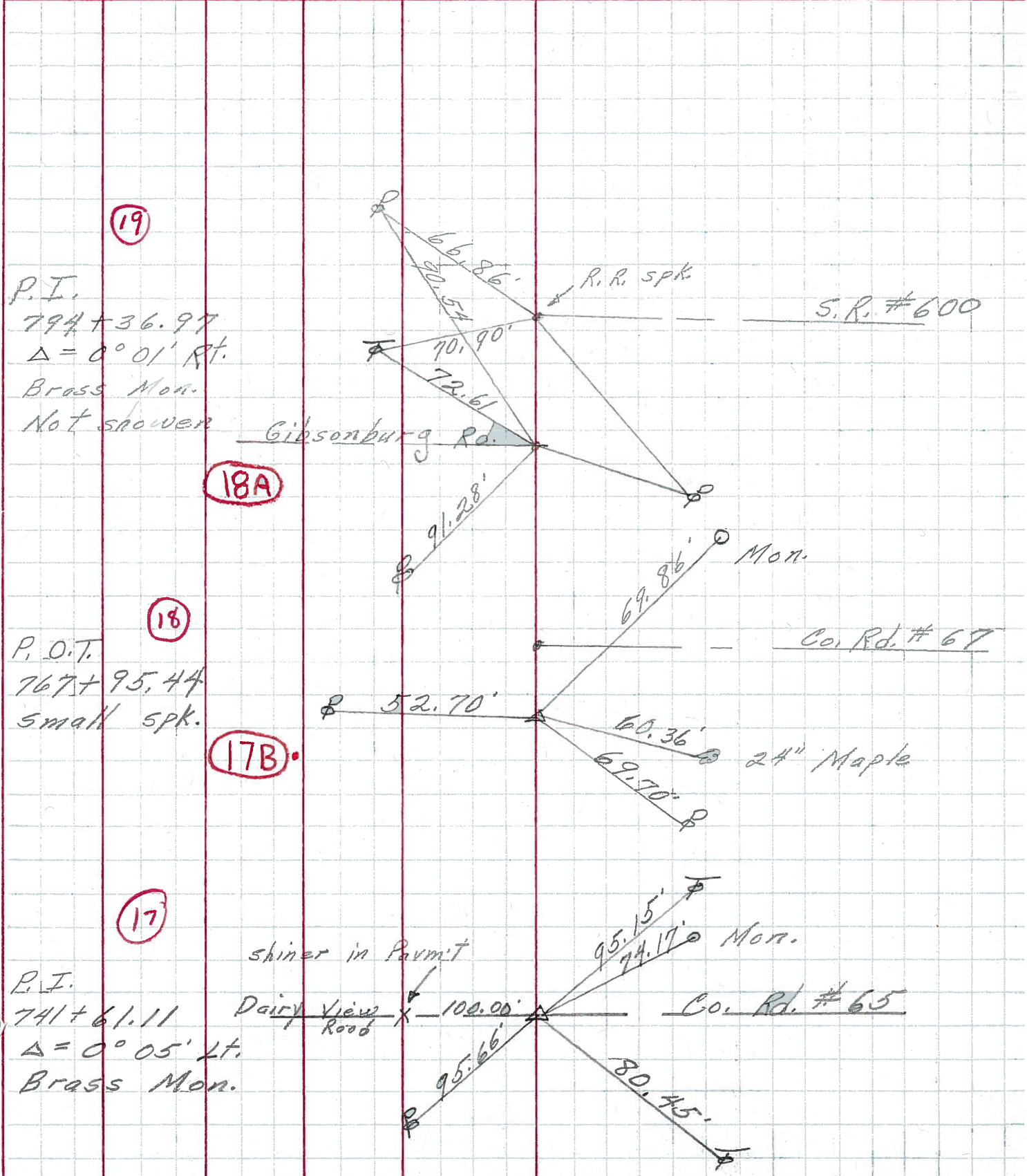


RECORD:  
 POT  
 SHANK OF SM SPK  
 767+95.44  
 SET PKS & WASHERS  
 4-14-93, MB  
 FD, SHOT GPS  
 REFA42, REFB42  
 11-30-12, SAH  
 NEWREF42, NEWREFA42  
 FD MON BOX W/ 3/4" IPIN  
 10-17-16, JLL



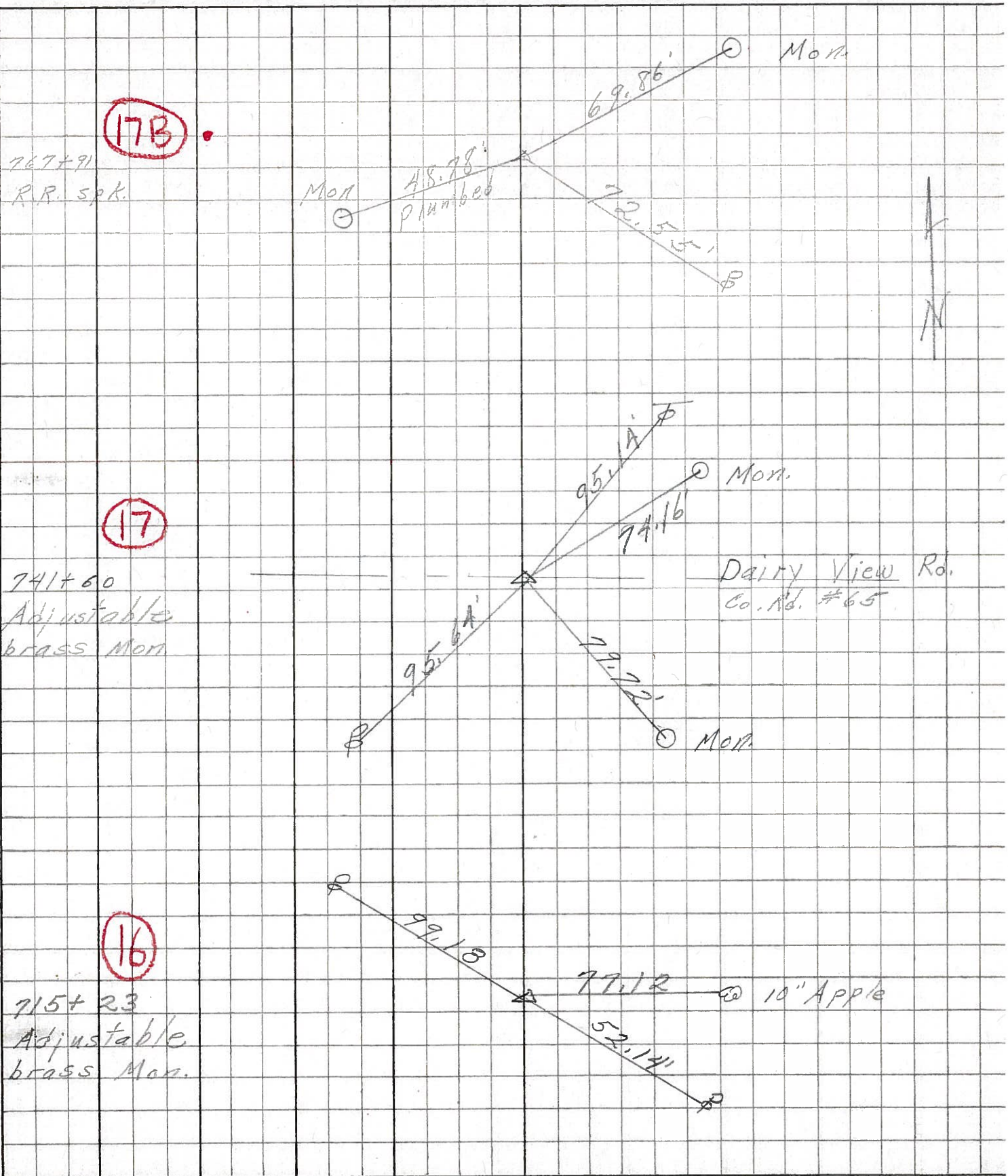
PERSONNEL	TITLE	PERSONNEL	TITLE	COUNTY	DATE
Schneider				Sag- Wood	2-6-70
Mosser				S. R. 23	WEATHER Fair
Barbour				SEC. U.S. #6 - U.S. #20	TEMP. 40°
Potts					

DESCRIPTION Ties for Control Points JOB NO. \_\_\_\_\_



PERSONNEL	TITLE	PERSONNEL	TITLE	COUNTY	DATE	WEATHER	TEMP.
Schneider		Potts		Sandusky-Wood	7-5-67	Cloudy	70°
Mosser				S. R. 199 23			
Barbour				SEC. U.S. #6 to S.R. #600			
Redding							

DESCRIPTION Ties for Control Points JOB NO. \_\_\_\_\_



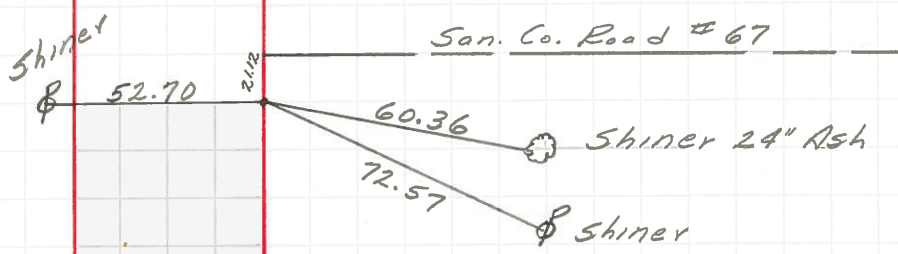
PERSONNEL TITLE PERSONNEL TITLE  
 Swarden Notes Rice  
 Cronin  
 Holcombe  
 Sage

COUNTY San-Woo DATE 6/29/60  
 S. R. #199 WEATHER Cloudy  
 SEC U.S.#6 North to U.S.#20 TEMP. +80

DESCRIPTION Ties for Control Points LEFT CENTER LINE RIGHT JOB NO.

173

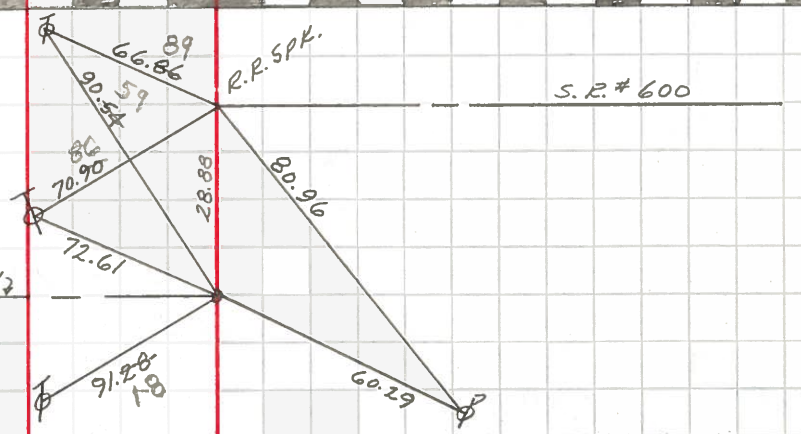
P.O.T. = 767+95.44  
 R.R. Spk.



Checked 8/16/66  
 Morrison

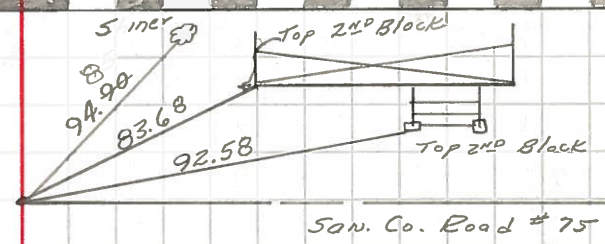
P.I. = 794+36.97  
 Brass Mon.  
 $\Delta = 0^\circ - 01' \text{ Rt.}$

Gibsonburg Rd



Checked 8/16/66 M.C.M.

P.I. = 820+73.31  
 BRASS Mon.  
 $\Delta = 0^\circ - 01' \text{ R.}$

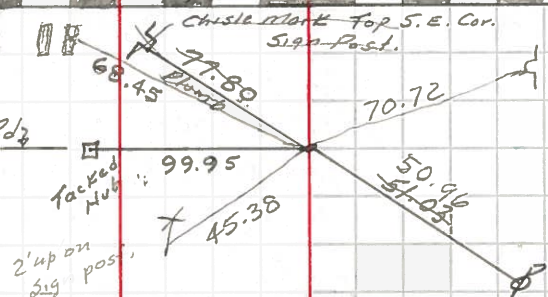


Checked & Reset. 8/16/66 M.C.M.

P.I. = 847+09.43  
 R.R. Spk.  
 $\Delta = 0^\circ - 14' \text{ Lt.}$

Cross in Center East Wall C.B.

Kahler Rd



P.I. = 873+46.14  
 BRASS Mon.  
 $\Delta = 0^\circ - 11' \text{ Rt.}$

