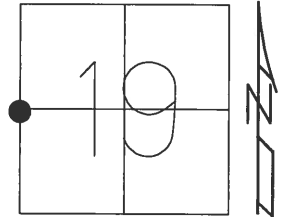


O.D.O.T. DISTRICT 2 SURVEY OFFICE (USE ONLY)

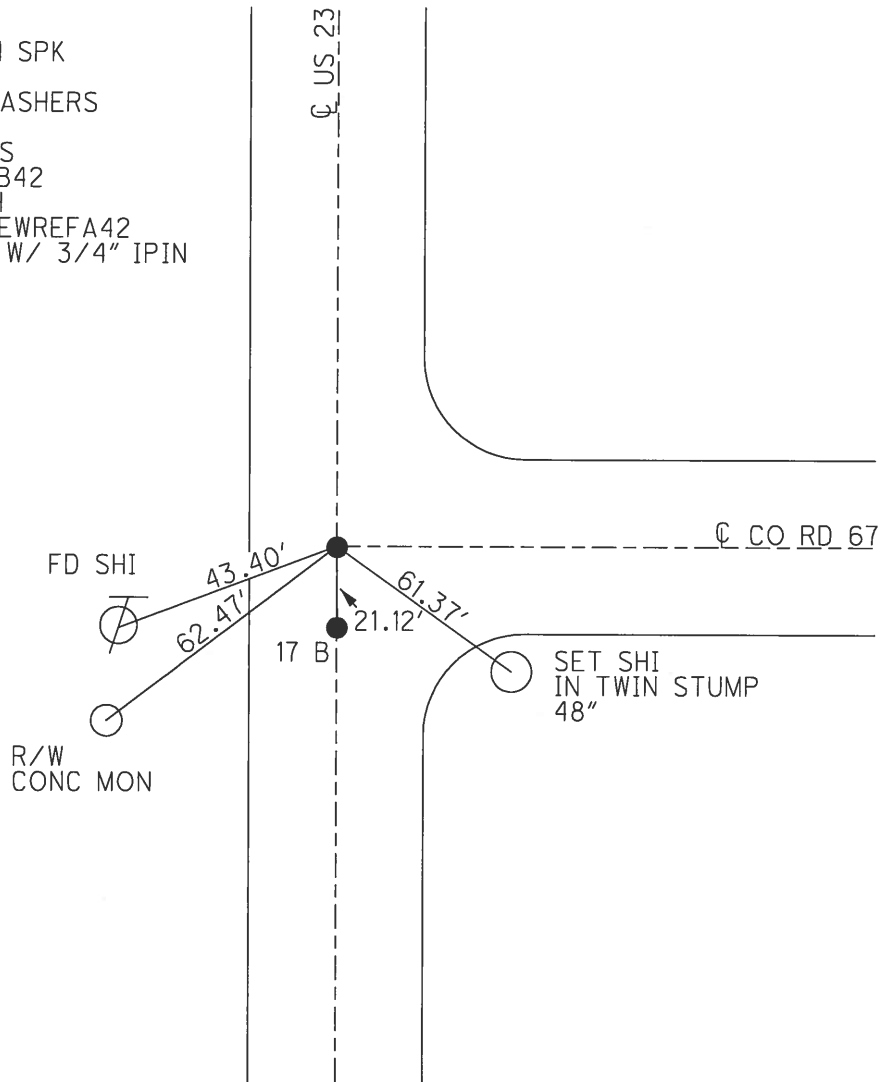
PERSONNEL _____ REFERENCE NO. 18 SHEET 27 OF 51
 NOTES RHOADES DATE 4-21-14 ROUTE US 23
 H.C. ROUSOS WEATHER CLOUDY COUNTY SANDUSKY
 R.C. GABLE TEMP. 62° TOWNSHIP MADISON
 _____ HOMAN _____ SECTION 19
 T 5 N R 13 E

TYPE MONUMENT _____ P.K. NAIL/WASHER
 ON SURFACE - ~~BELOW~~ _____ ON _____
 LEFT - ☉ PAV'T - RIGHT _____ ON _____
11.9 TO LT EDGE PAVEMENT
 S.L.M. 450+10



Grid: Northing: 624627.717 Easting: 1716974.941

RECORD:
 POT
 SHANK OF SM SPK
 767+95.44
 SET PKS & WASHERS
 4-14-93, MB
 FD, SHOT GPS
 REFA42, REFB42
 11-30-12, SAH
 NEWREF42, NEWREFA42
 FD MON BOX W/ 3/4" IPIN
 10-17-16, JLL



PERSONNEL TITLE PERSONNEL TITLE

Schneider

COUNTY Sar-Wood

DATE 2-6-70

Mosser

S. R. 23

WEATHER Fair

Barbour

SEC. U.S.#6-U.S.#20

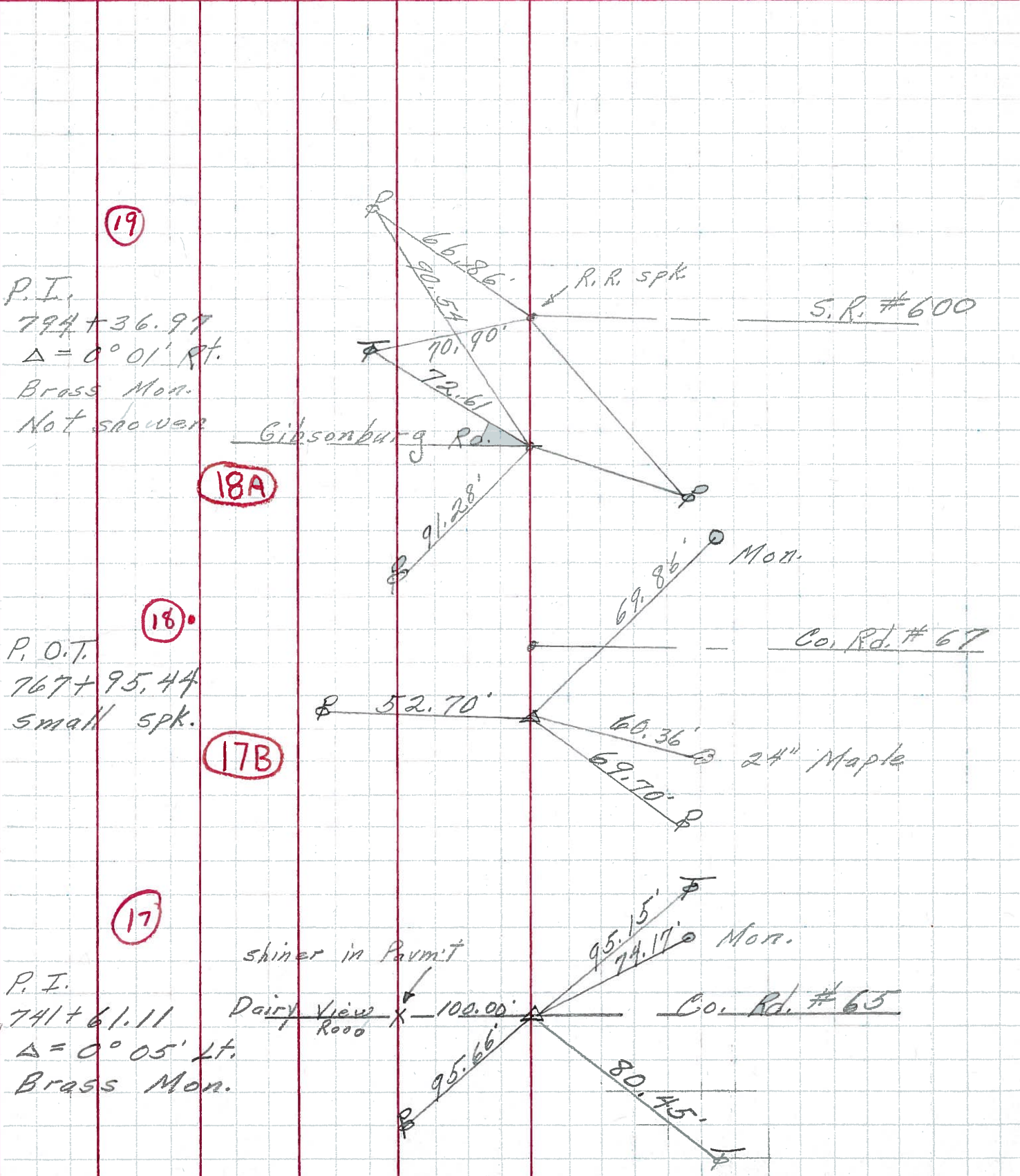
TEMP. 40°

Potts

DESCRIPTION Ties for Control Points

JOB NO.

LEFT CENTER LINE RIGHT



19

P.I.
794+36.97
 $\Delta = 0^\circ 01' \text{ Rt.}$
Brass Mon.
Not shown

18A

18

P.O.T.
767+95.44
Small spk.

17B

17

P.I.
741+61.11
 $\Delta = 0^\circ 05' \text{ Lt.}$
Brass Mon.