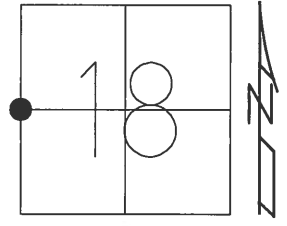


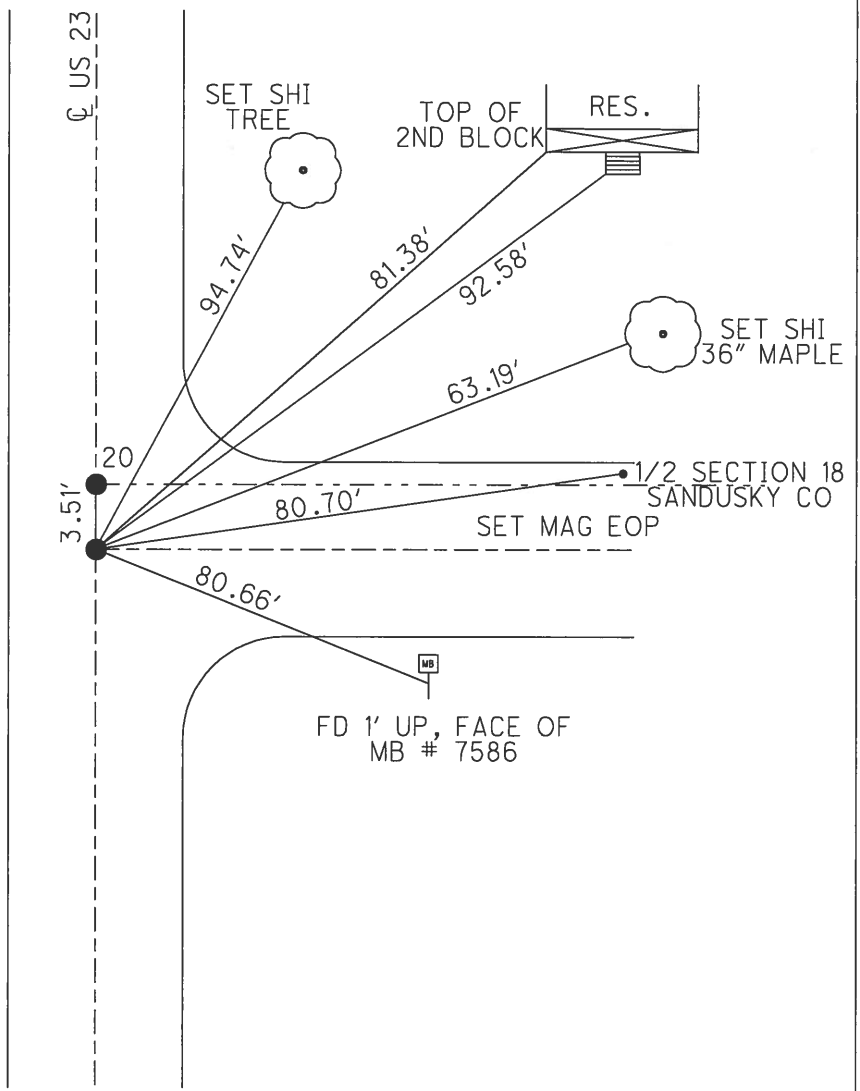
O.D.O.T. DISTRICT 2 SURVEY OFFICE (USE ONLY)

PERSONNEL	REFERENCE NO.	19 A	SHEET	30 OF	51
NOTES	RHOADES	DATE	4-21-14	ROUTE	US 23
H.C.	ROUSOS	WEATHER	CLOUDY	COUNTY	SANDUSKY
R.C.	GABLE	TEMP.	74°	TOWNSHIP	MADISON
	HOMAN			SECTION	18
				T	5 N R 13 E

TYPE MONUMENT BRASS MON  
~~ON SURFACE~~ - BELOW 4"  
 LEFT - ☉ PAV'T - RIGHT ON  
11.2 TO W EDGE PAVEMENT  
 S.L.M. 502+67  
 Grid: Northing: 629882.421 Easting: 1717111.810



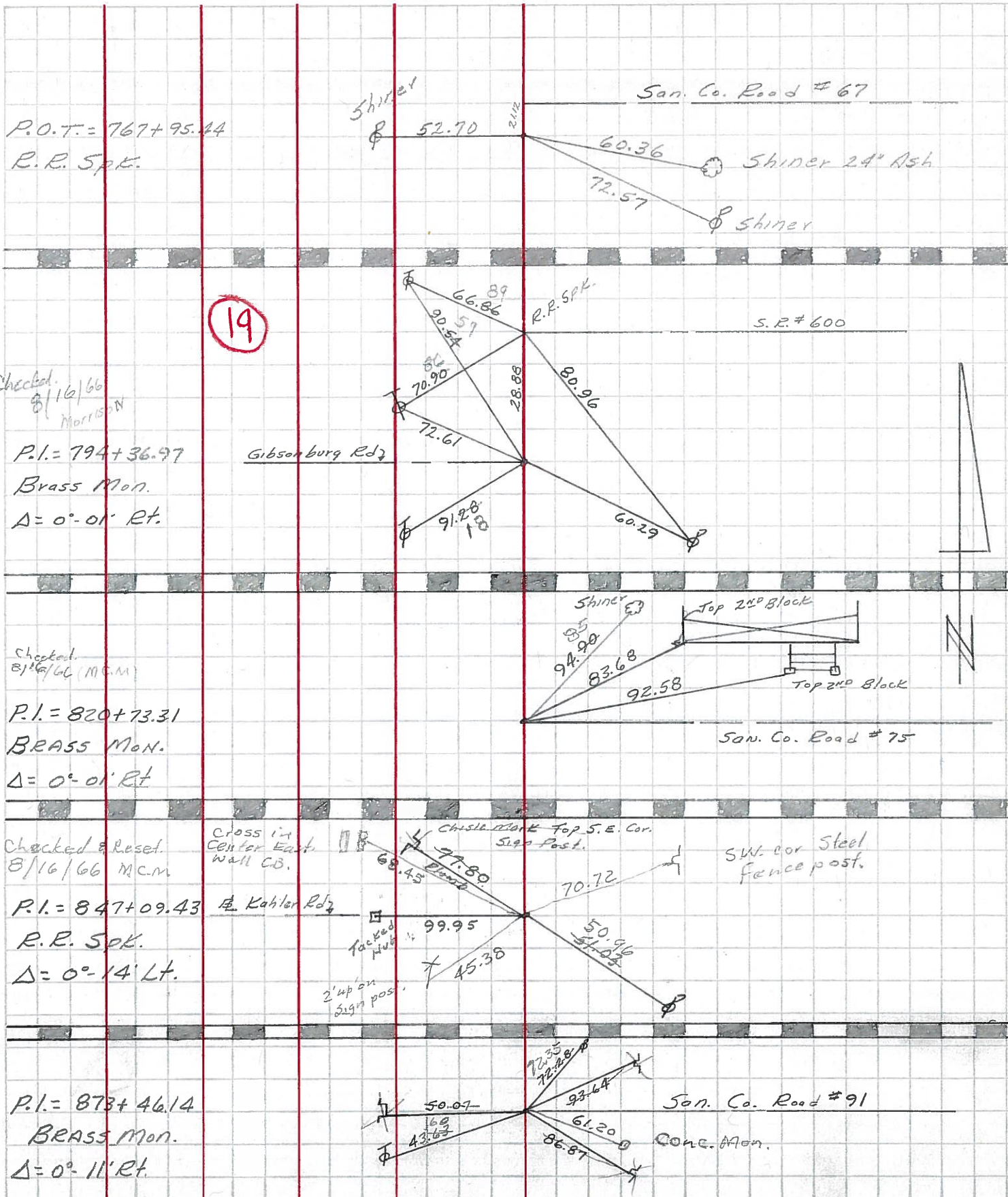
RECORD:  
 PI  
 820+73  
 $\Delta=0^{\circ}-01'$  RT  
 BRASS MON  
 SET PKS & WASHERS  
 4-14-92, MB  
 POINT "B" (NEWREFB44)  
 FD SPK AT SURFACE  
 (ORIGIN UNKNOWN)  
 GPS SHOTS REFA44,  
 REFB44, FD  
 11-30-12, SAH  
 NEWREFA44  
 FD MON BOX W/  
 STONE USED HIGH POINT  
 NEWREFB44  
 FD MAG NAIL



PERSONNEL	TITLE	PERSONNEL	TITLE
Sworden	Notes	RICE	
Cronin			
Holcombe			
Sage			

COUNTY San-Woo DATE 6/29/60  
 S. R. #199 WEATHER Cloudy  
 SEC. U.S.#6 North to U.S.#20 TEMP. +80

DESCRIPTION Ties for Control Points JOB NO. \_\_\_\_\_  
 LEFT CENTER LINE RIGHT



Checked 8/16/66  
MORRISON

19

P.I. = 794+36.97  
Brass Mon.  
Δ = 0°-01' Rt.

Checked 8/16/66 (M.C.M.)  
P.I. = 820+73.31  
BRASS Mon.  
Δ = 0°-01' Rt.

Checked & Reset 8/16/66 M.C.M.  
P.I. = 847+09.43  
R.R. Spk.  
Δ = 0°-14' Lt.

P.I. = 873+46.14  
BRASS Mon.  
Δ = 0°-11' Rt.