

O.D.O.T. DISTRICT 2 SURVEY OFFICE (USE ONLY)

PERSONNEL	REFERENCE NO.	<u>20</u>	SHEET	<u>31</u>	OF	<u>51</u>
NOTES	RHOADES	DATE	<u>4-21-14</u>	ROUTE	<u>US 23</u>	
H.C.	ROUSOS	WEATHER	<u>CLOUDY</u>	COUNTY	<u>SANDUSKY</u>	
R.C.	GABLE	TEMP.	<u>74°</u>	TOWNSHIP	<u>MADISON</u>	
	HOMAN			SECTION	<u>18</u>	
				T	<u>5</u>	N
				R	<u>13</u>	E

TYPE MONUMENT RR.SPIKE

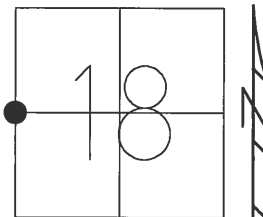
~~ON SURFACE~~ - BELOW 2"

LEFT - ☉ PAV'T - RIGHT ON

11.2 TO LT EDGE PAVEMENT

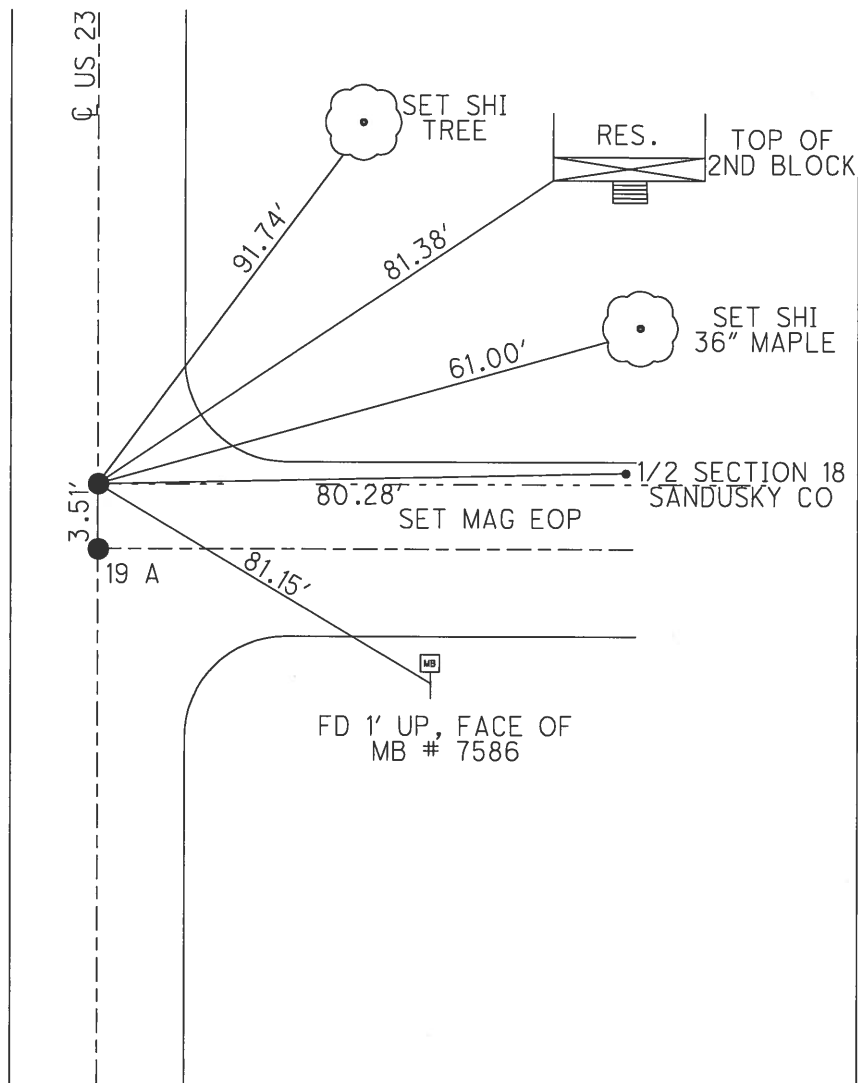
S.L.M. 502+71

Grid: Northing: 629885.936 Easting: 1717111.906

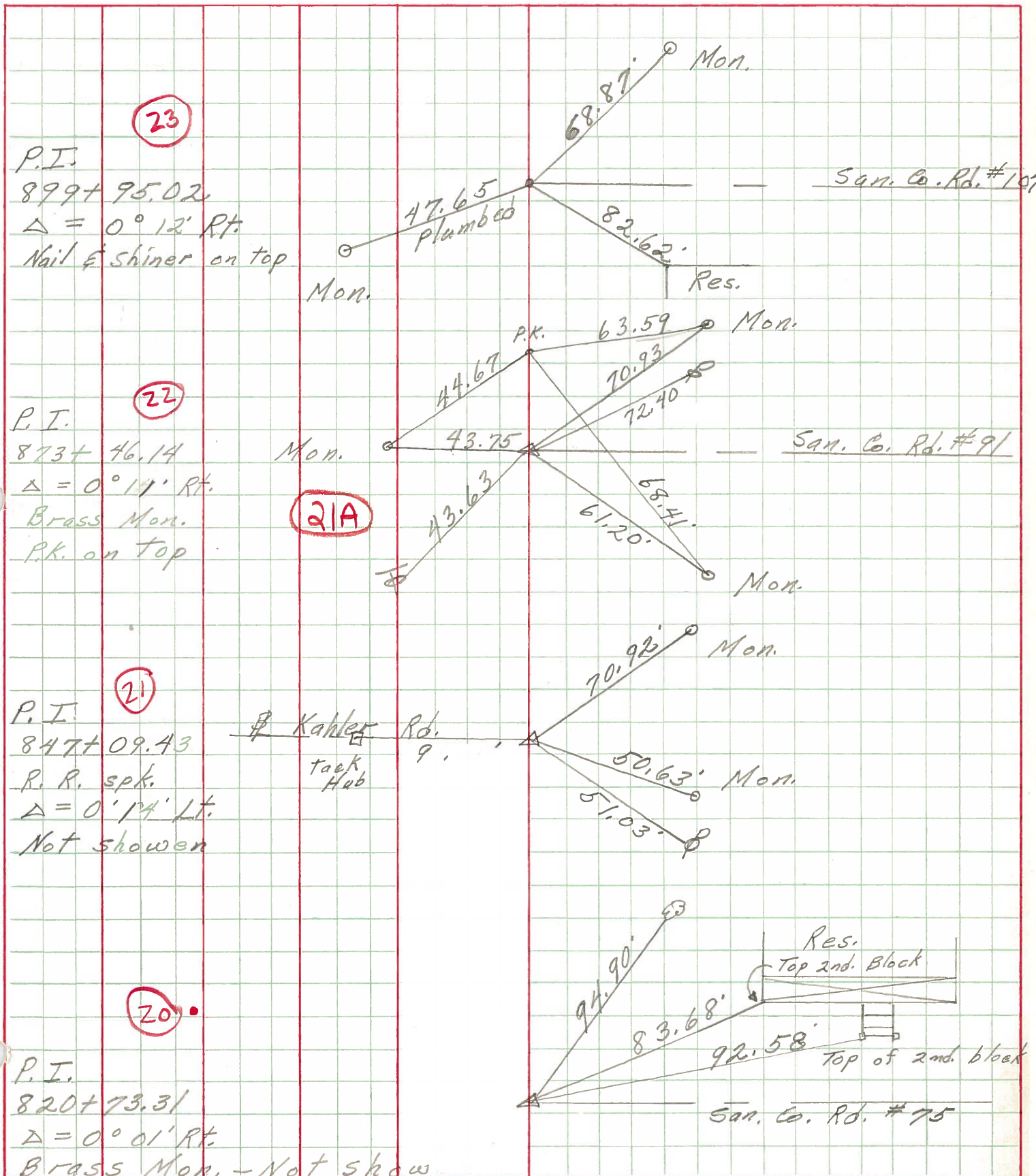


RECORD:

PI
820+73
Δ=0°-01' RT
BRASS MON
SET PKS & WASHERS
4-14-92, MB
POINT "B" (NEWREFB44)
FD SPK AT SURFACE
(ORIGIN UNKNOWN)
GPS SHOTS REFA44,
REFB44, FD
11-30-12, SAH
NEWREFA44
FD MON BOX W/
STONE USED HIGH POINT
NEWREFB44
FD MAG NAIL

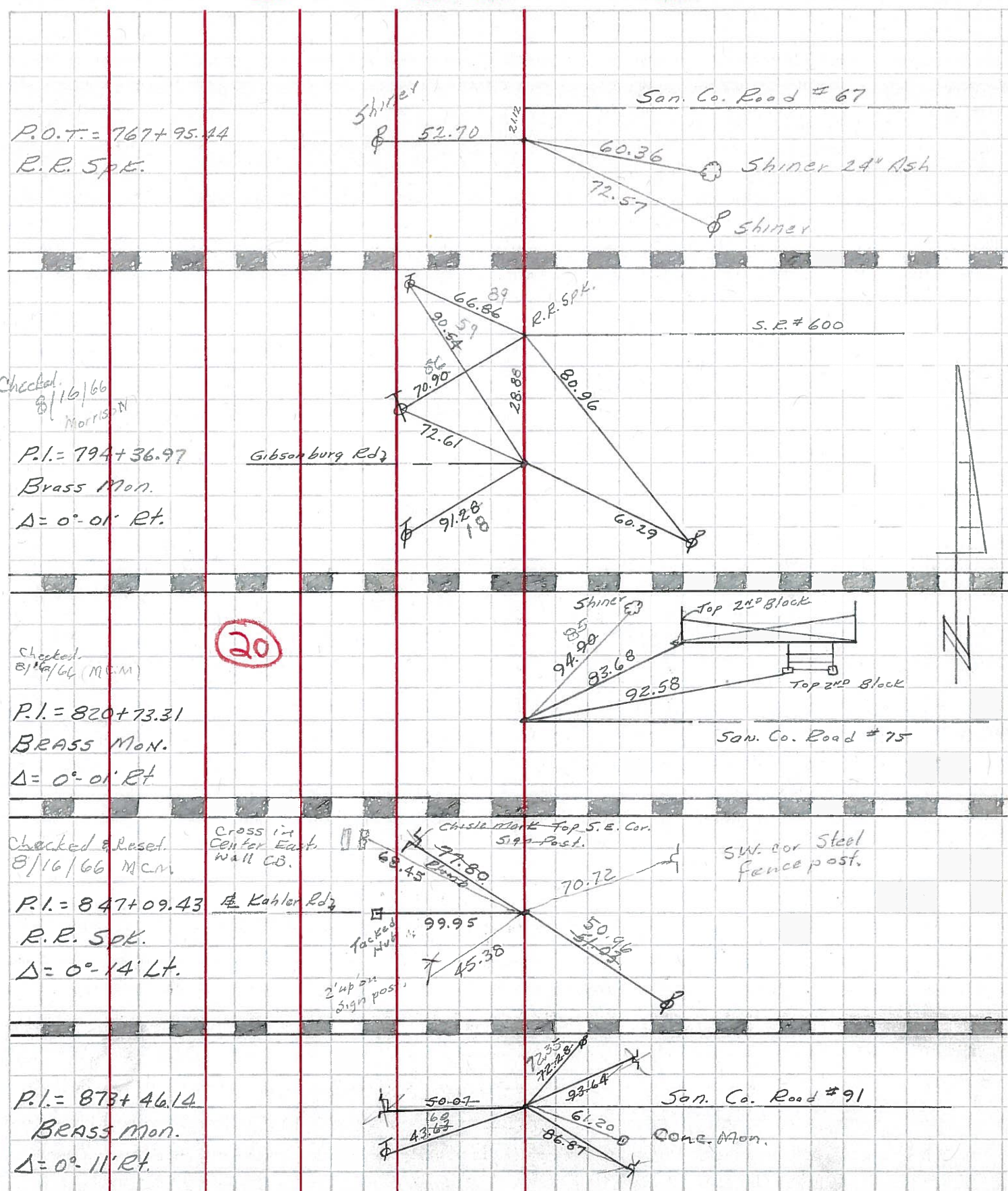


PERSONNEL	TITLE	PERSONNEL	TITLE	COUNTY	DATE
<u>Schneider</u>				<u>San-Wood</u>	<u>2-6-70</u>
<u>Mosser</u>				S. R. <u>23</u>	WEATHER <u>Fair</u>
<u>Barbour</u>				SEC. <u>U.S.#6 to U.S.#20</u>	TEMP. <u>40°</u>
<u>Potts</u>					
DESCRIPTION	<u>Ties for Control Points</u>			JOB NO.	
	LEFT	CENTER LINE	RIGHT		



PERSONNEL	TITLE	PERSONNEL	TITLE	COUNTY	DATE
<u>Sworden</u>	<u>Notes</u>	<u>RICE</u>		<u>San. Woo</u>	<u>6/29/60</u>
<u>Cronin</u>				<u>23</u>	
<u>Holcombe</u>				<u>#199</u>	<u>WEATHER Cloudy</u>
<u>Sage</u>				<u>SEC. U.S.#6 North to U.S.#20</u>	<u>TEMP. +80</u>

DESCRIPTION Ties For Control Points JOB NO. _____



Checked 8/16/66
MORRISON

20

Checked 8/16/66 (M.C.M)

Checked & Reset 8/16/66 M.C.M