

O.D.O.T. DISTRICT 2 SURVEY OFFICE (USE ONLY)

PERSONNEL

REFERENCE NO. 21

SHEET 33 OF 51

NOTES RHOADES

DATE 4-21-14

ROUTE US 23

H.C. ROUSOS

WEATHER CLOUDY

COUNTY SANDUSKY

R.C. GABLE

TEMP. 74°

TOWNSHIP MADISON

HOMAN

SECTION 7

T 5 N R 13 E

TYPE MONUMENT RR.SPIKE

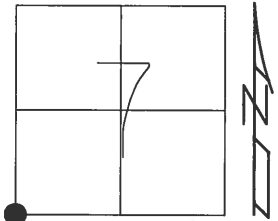
~~ON SURFACE~~ - BELOW 4.5"

LEFT - ☉ PAV'T - RIGHT ON

12.3 TO RT EDGE PAVEMENT

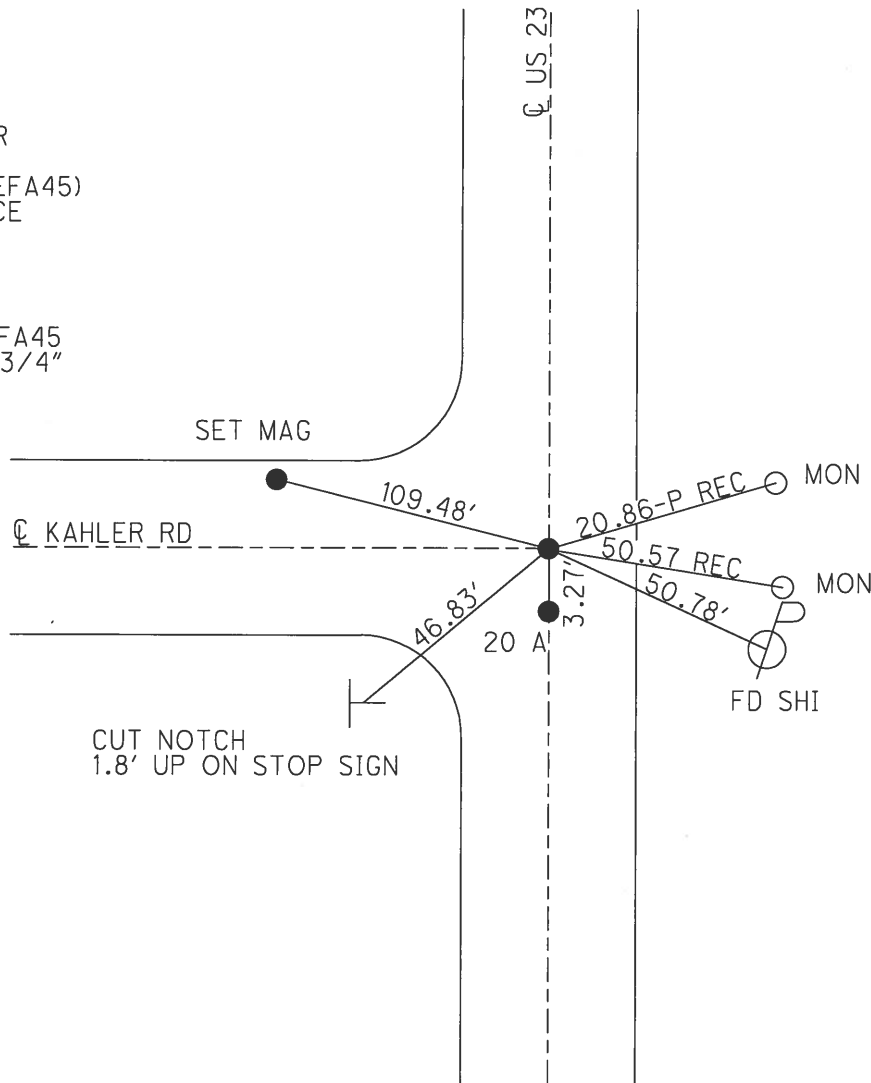
S.L.M. 529+04

Grid: Northing: 632517.748 Easting: 1717182.182

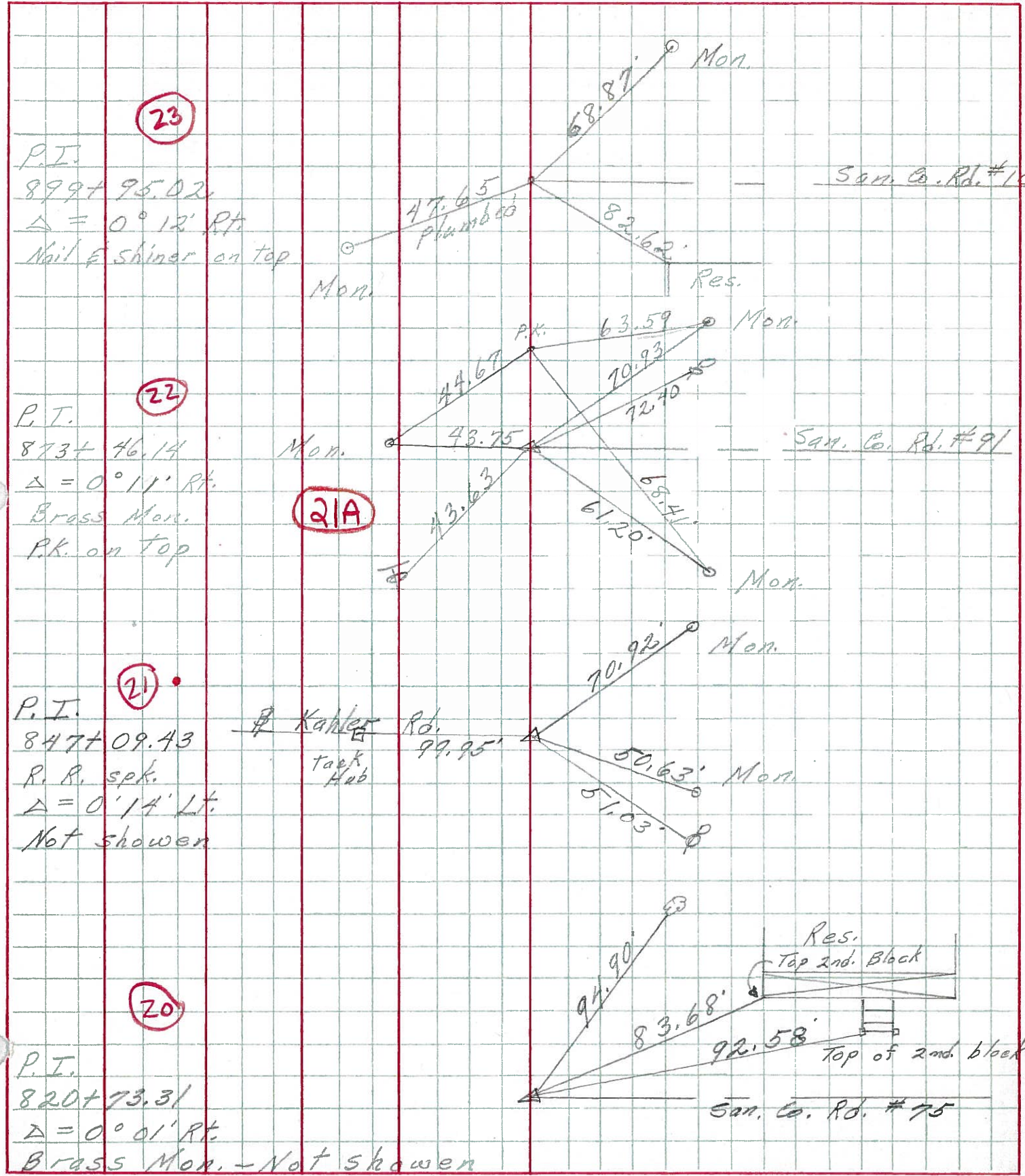


RECORD:

PI
847+09.43
 $\Delta=0^{\circ}-14'-00''$ LT
RR SPK
SET PK & WASHER
4-15-92, BVD
POINT "B" (NEWREFA45)
FD PK AT SURFACE
ORIGIN UNKNOWN
GPS SHOTS
REFA45 REFB45
12-3-12, SAH
NEWREF45 NEWREFA45
FD MON BOX W/ 3/4"
IPIN @ BOTH
10-17-16, JLL

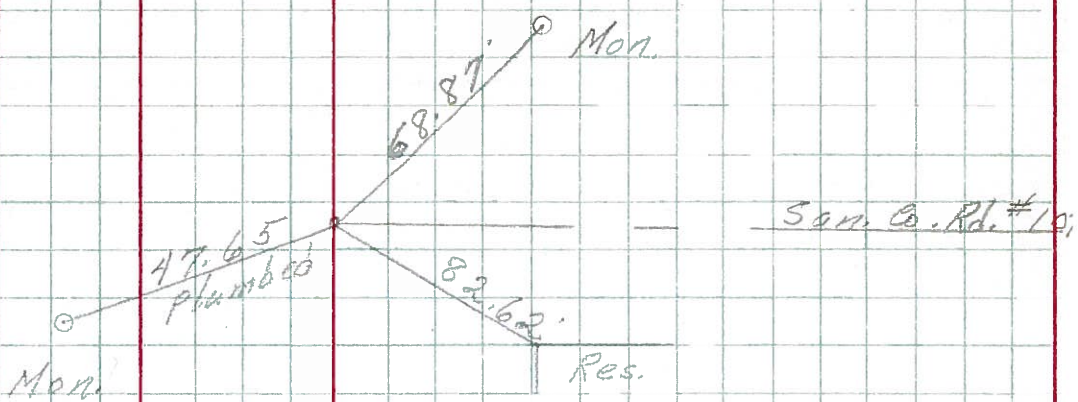


PERSONNEL TITLE PERSONNEL TITLE COUNTY San-Wood DATE 2-6-70
 Mosser _____ S. R. 23 WEATHER Fair
 Barbour _____ SEC. U.S.#6 to U.S.#20 TEMP. 40°
 Potts _____
 DESCRIPTION Ties for Control Points JOB NO. _____



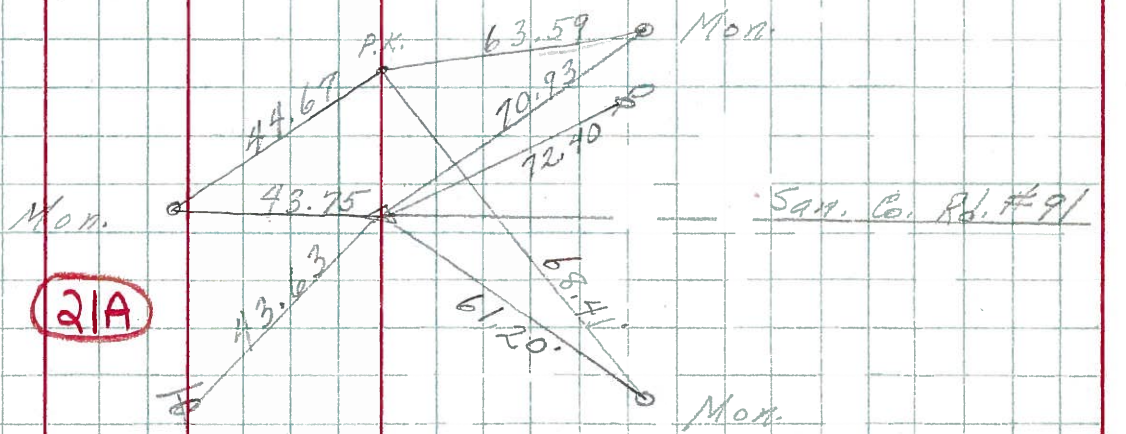
23

P.I.
 899+95.02
 $\Delta = 0^\circ 12' \text{ Rt.}$
 Nail & shiner on top



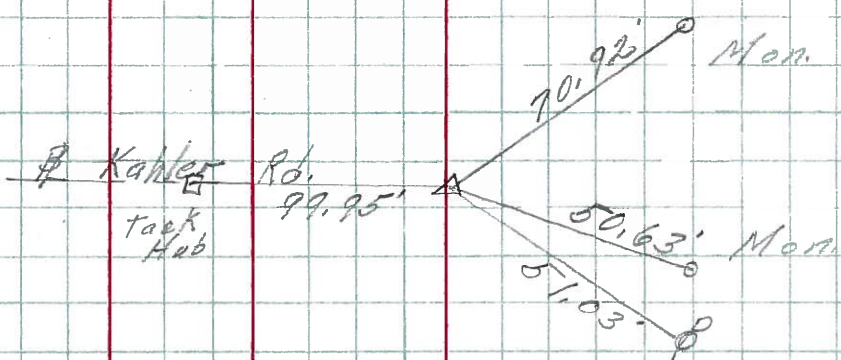
22

P.T.
 873+46.14
 $\Delta = 0^\circ 11' \text{ Rt.}$
 Brass Mon.
 P.K. on top



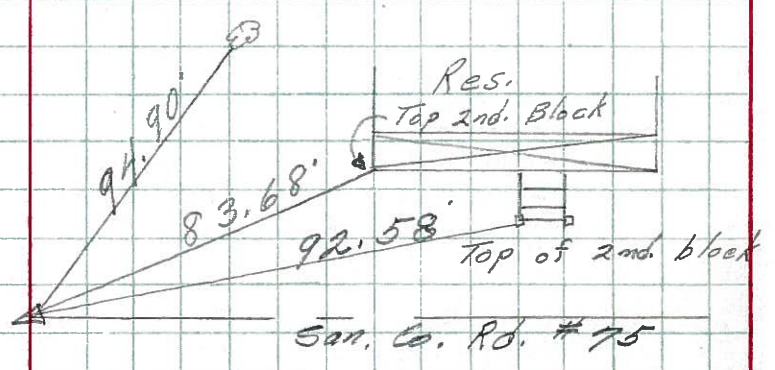
21A

P.I.
 847+09.43
 R. R. spk.
 $\Delta = 0^\circ 14' \text{ Lt.}$
 Not shown



20

P.I.
 820+73.31
 $\Delta = 0^\circ 01' \text{ Rt.}$
 Brass Mon. - Not shown



PERSONNEL TITLE PERSONNEL TITLE COUNTY San. Woo DATE 6/29/60
Sworden Notes RICE S. R. #199 WEATHER Cloudy
Cronin Holcombe Sage SEC. U.S.#6 North to U.S.#20 TEMP. +80

DESCRIPTION Ties For Control Points JOB NO. _____
 LEFT CENTER LINE RIGHT

