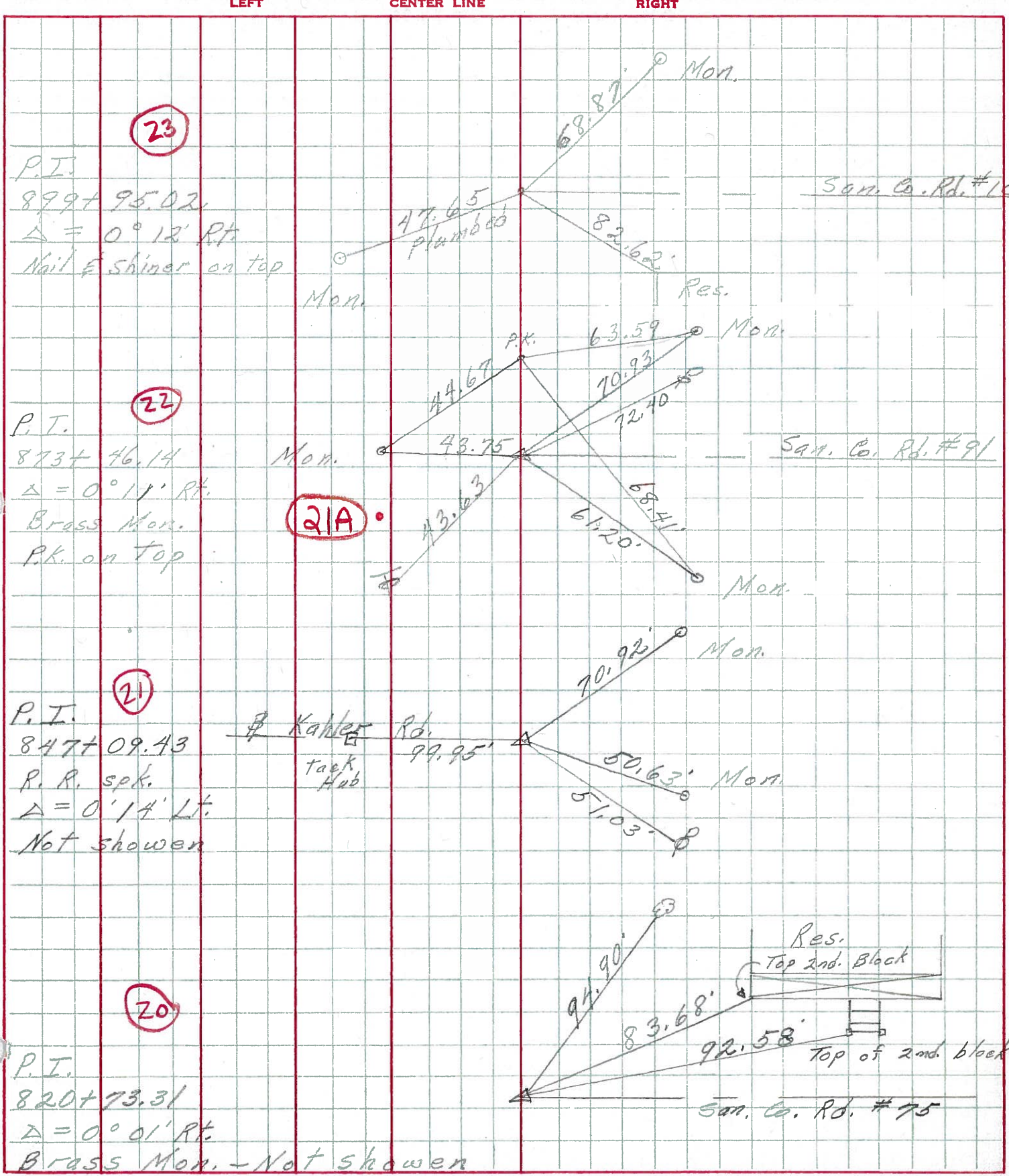


PERSONNEL TITLE PERSONNEL TITLE COUNTY San-Wood DATE 2-6-70
Schneider _____
Mosser _____ S. R. 23 WEATHER Fair
Barbour _____
Potts _____ SEC. U.S.#6 to U.S.#20 TEMP. 40°
 DESCRIPTION Ties for Control Points JOB NO. _____



PERSONNEL TITLE PERSONNEL TITLE COUNTY San-Woo DATE 6/29/60
Sworden Notes RICE S. R. #199 WEATHER Cloudy
Cronin Holcombe Sage SEC. U.S.#6 North to U.S.#20 TEMP. +80

DESCRIPTION Ties for Control Points JOB NO. _____
 LEFT CENTER LINE RIGHT

