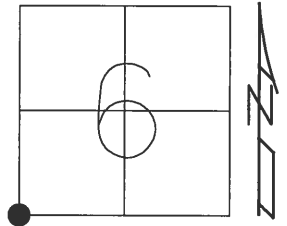


O.D.O.T. DISTRICT 2 SURVEY OFFICE (USE ONLY)

PERSONNEL	REFERENCE NO.	22 A	SHEET	36 OF	51
NOTES	HOMAN	DATE	4-22-14	ROUTE	US 23
H.C.	ROUSOS	WEATHER	CLOUDY	COUNTY	SANDUSKY
R.C.	GABLE	TEMP.	60°	TOWNSHIP	WOODVILLE
				SECTION	6
				T 6 N	R 13 E

TYPE MONUMENT _____ RR SPIKE _____
 ON SURFACE - ~~BELOW~~ _____ ON _____
 LEFT - \odot PAV'T - RIGHT _____ ON _____
 11.9 TO W EDGE PAVEMENT
 S.L.M. _____ 581+90
 Grid: Northing: 637801.888 Easting: 1717310.768



RECORD:
 NAIL & SHINER
 SET PK/WASHER
 4-15-92, BVD
 POINT "B" FD SPK
 AT SURFACE
 ORIGIN UNKNOWN
 FD, GPS SHOTS
 REFA47, REFB47
 12-3-12, SAH
 NEWREF47, NEWREFA47
 FD MON BOX W/ 3/4"
 IPIN @ BOTH
 10-17-16, JLL

