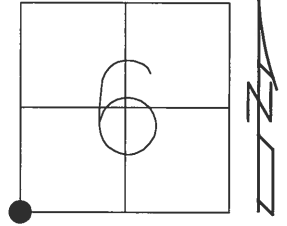


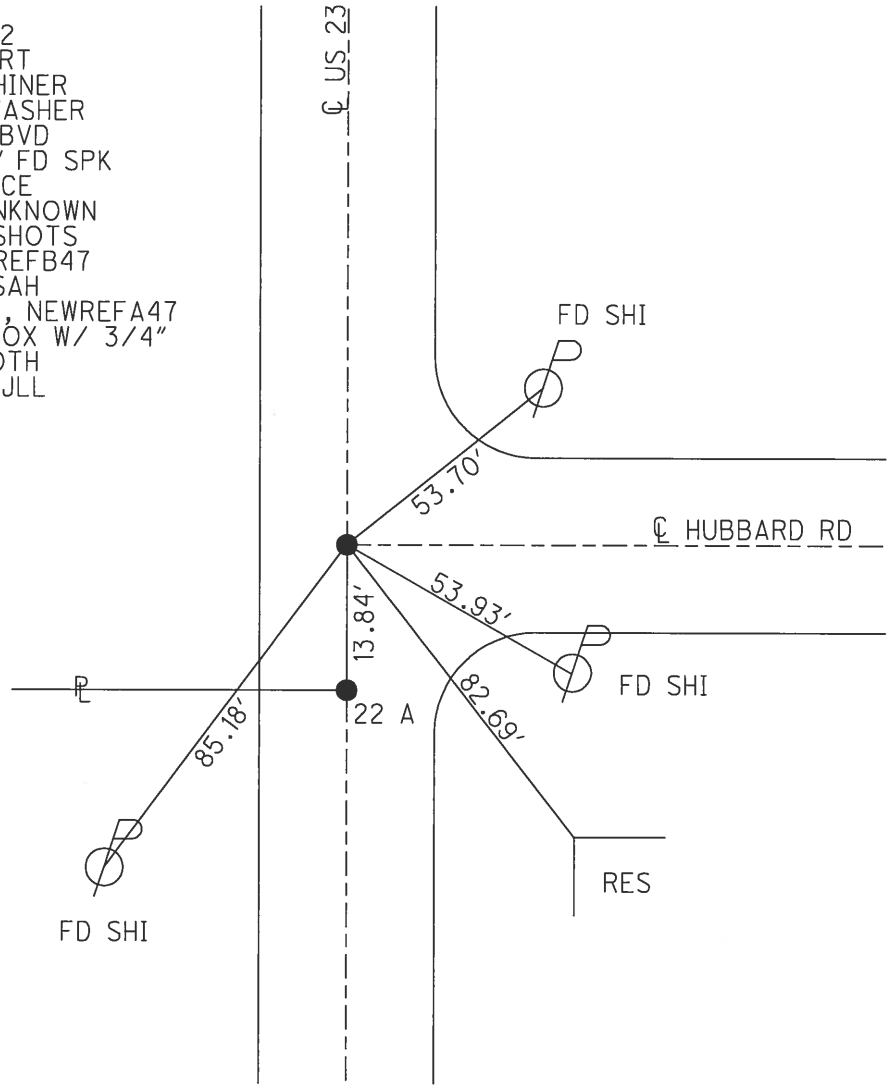
O.D.O.T. DISTRICT 2 SURVEY OFFICE (USE ONLY)

PERSONNEL \_\_\_\_\_ REFERENCE NO. 23 SHEET 37 OF 51  
 NOTES HOMAN DATE 4-22-14 ROUTE US 23  
 H.C. ROUSOS WEATHER CLOUDY COUNTY SANDUSKY  
 R.C. GABLE TEMP. 60° TOWNSHIP WOODVILLE  
 SECTION 6  
 T 6 N R 13 E

TYPE MONUMENT \_\_\_\_\_ P.K. NAIL/WASHER  
 ON SURFACE - ~~BELOW~~ \_\_\_\_\_ ON \_\_\_\_\_  
 LEFT - ☉ PAV'T - RIGHT \_\_\_\_\_ ON \_\_\_\_\_  
11.9 TO W EDGE PAVEMENT  
 S.L.M. 582+04  
 Grid: Northing: 637788.095 Easting: 1717310.382



RECORD:  
 PI  
 899+95.02  
 $\Delta=0^{\circ}-12'$  RT  
 NAIL & SHINER  
 SET PK/WASHER  
 4-15-92, BVD  
 POINT "B" FD SPK  
 AT SURFACE  
 ORIGIN UNKNOWN  
 FD, GPS SHOTS  
 REFA47, REFB47  
 12-3-12, SAH  
 NEWREF47, NEWREFA47  
 FD MON BOX W/ 3/4"  
 IPIN @ BOTH  
 10-17-16, JLL



PERSONNEL TITLE PERSONNEL TITLE

COUNTY San-Wood DATE 2-6-70

Schneider

S. R. 23 WEATHER Fair

Mosser

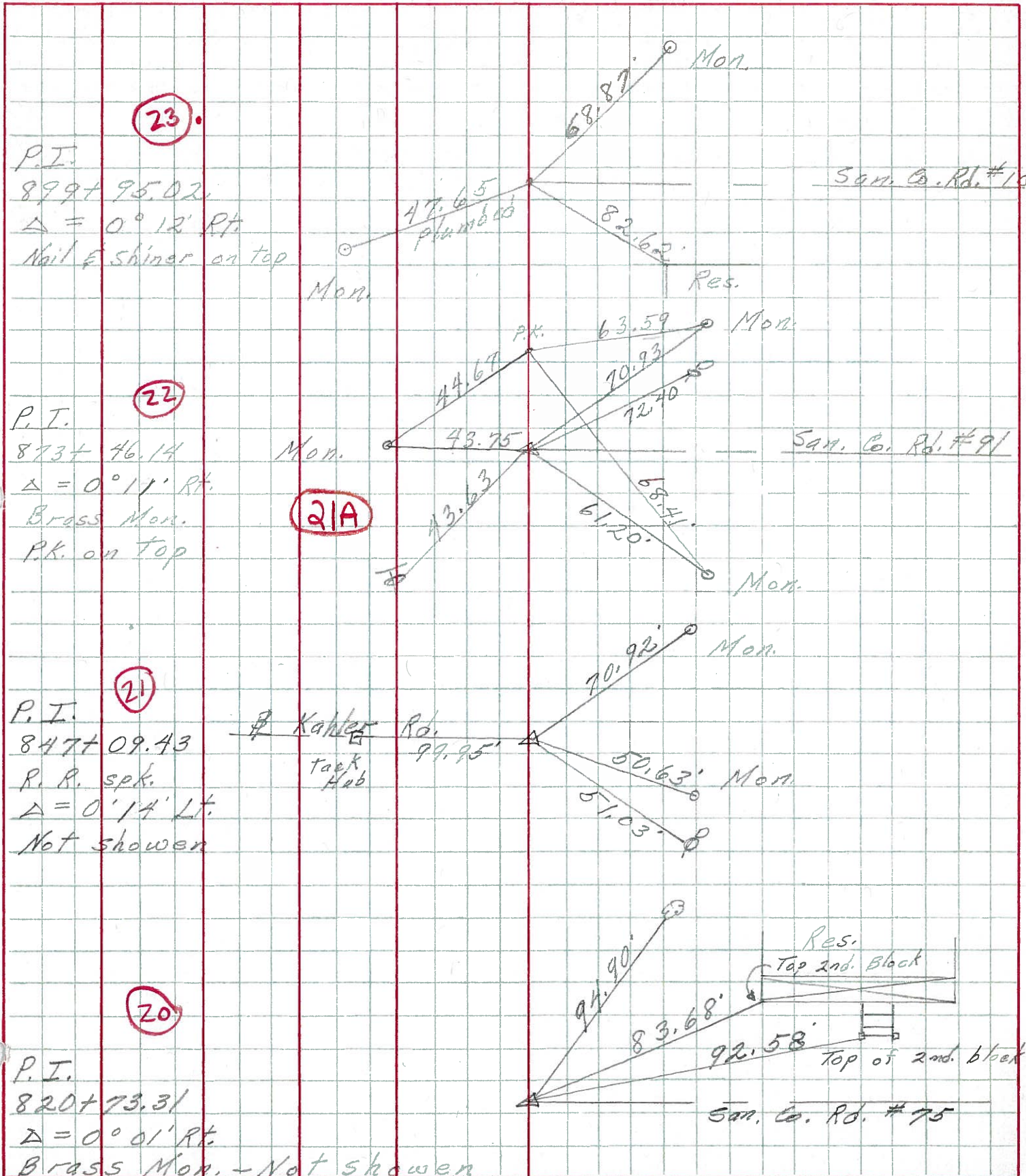
Barbour

SEC. U.S. #6 to U.S. #20 TEMP. 40°

Potts

DESCRIPTION Ties for Control Points JOB NO.

LEFT CENTER LINE RIGHT





PERSONNEL	TITLE	PERSONNEL	TITLE	COUNTY	DATE
Sworden	Notes	Rice		San-Woo	6-30-60
Cronin				23	
Holcombe				S. R. #199	WEATHER Clear
Saga				SEC. U.S.#6 to U.S.#20	TEMP. +80°

DESCRIPTION Tie for Control Points JOB NO.

