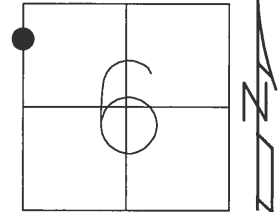


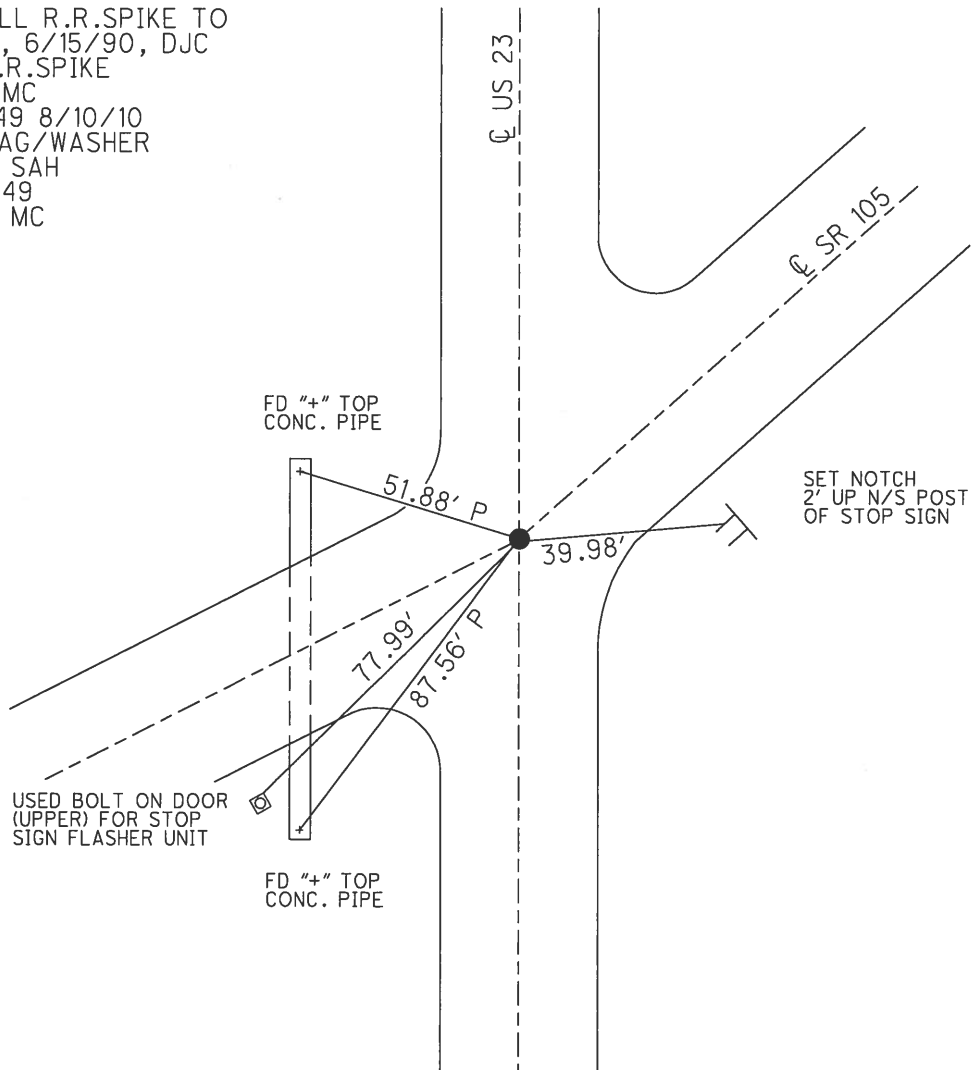
O.D.O.T. DISTRICT 2 SURVEY OFFICE (USE ONLY)

PERSONNEL	REFERENCE NO.	<u>25</u>	SHEET	<u>39</u>	OF	<u>51</u>
NOTES	<u>HUSS</u>	DATE	<u>4/20/12</u>	ROUTE	<u>US 23</u>	
H.C.	<u>CANTERBURY</u>	WEATHER	<u>CLEAR</u>	COUNTY	<u>SANDUSKY</u>	
R.C.	<u>HOMAN</u>	TEMP.	<u>62°</u>	TOWNSHIP	<u>WOODVILLE</u>	
				SECTION	<u>6</u>	
				T	<u>6</u>	R
					<u>N</u>	<u>13</u>
					<u>E</u>	

TYPE MONUMENT LG RR SPIKE  
 ON SURFACE - BELOW 0.3'  
 LEFT - Q PAV'T - RIGHT ON  
- TO - EDGE PAVEMENT  
 S.L.M. 627+94  
 GRID: NORTHING: 642375.5 EASTING: 1717446.0



RECORD:  
 SET SMALL R.R.SPIKE TO  
 SURFACE, 6/15/90, DJC  
 FD SM.R.R.SPIKE  
 7/2/10, MC  
 GPS, CP49 8/10/10  
 RESET MAG/WASHER  
 12/11/12, SAH  
 GPS, FIN49  
 3/13/13, MC



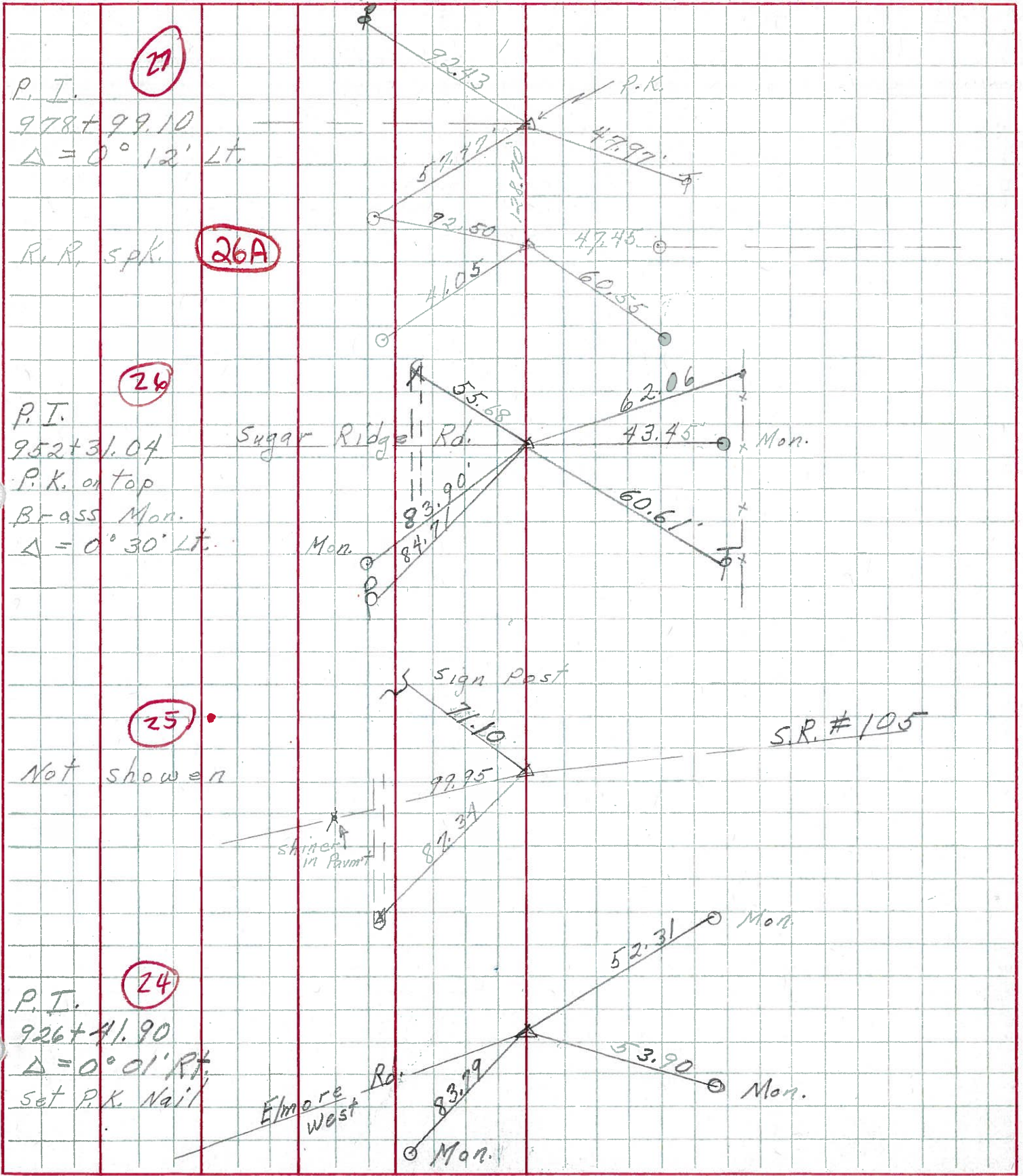
PERSONNEL TITLE PERSONNEL TITLE

Schneider \_\_\_\_\_ COUNTY San-Wood DATE 2-11-70

Mosser \_\_\_\_\_ S. R. 23 WEATHER cloudy

Barbour \_\_\_\_\_ SEC. U.S. #6 to U.S. #20 TEMP. 30°

Potts \_\_\_\_\_ DESCRIPTION Ties for Control Points JOB NO. \_\_\_\_\_



PERSONNEL	TITLE	PERSONNEL	TITLE	COUNTY	DATE
<u>Swordan</u>	<u>Notes</u>	<u>Rice</u>		<u>San-Woo</u>	<u>6-30-60</u>
<u>Cronin</u>				<u>23</u>	
<u>Holcomba</u>				S. R. <u>#199</u>	WEATHER <u>Clear</u>
<u>Saga</u>				SEC. <u>U.S.#6 to U.S.#20</u>	TEMP. <u>+80°</u>

DESCRIPTION Tie For Control Points JOB NO. \_\_\_\_\_

