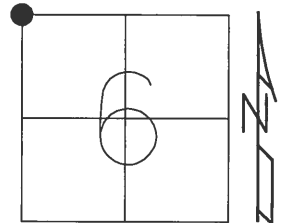


O.D.O.T. DISTRICT 2 SURVEY OFFICE (USE ONLY)

PERSONNEL	REFERENCE NO.	<u>26</u>	SHEET	<u>40</u>	OF	<u>51</u>
NOTES	<u>HUSS</u>	DATE	<u>4/20/12</u>	ROUTE	<u>US 23</u>	
H.C.	<u>CANTERBURY</u>	WEATHER	<u>CLEAR</u>	COUNTY	<u>SANDUSKY</u>	
R.C.	<u>HOMAN</u>	TEMP.	<u>62°</u>	TOWNSHIP	<u>WOODVILLE</u>	
				SECTION	<u>6</u>	
				T. <u>6</u> N	R. <u>13</u> E	

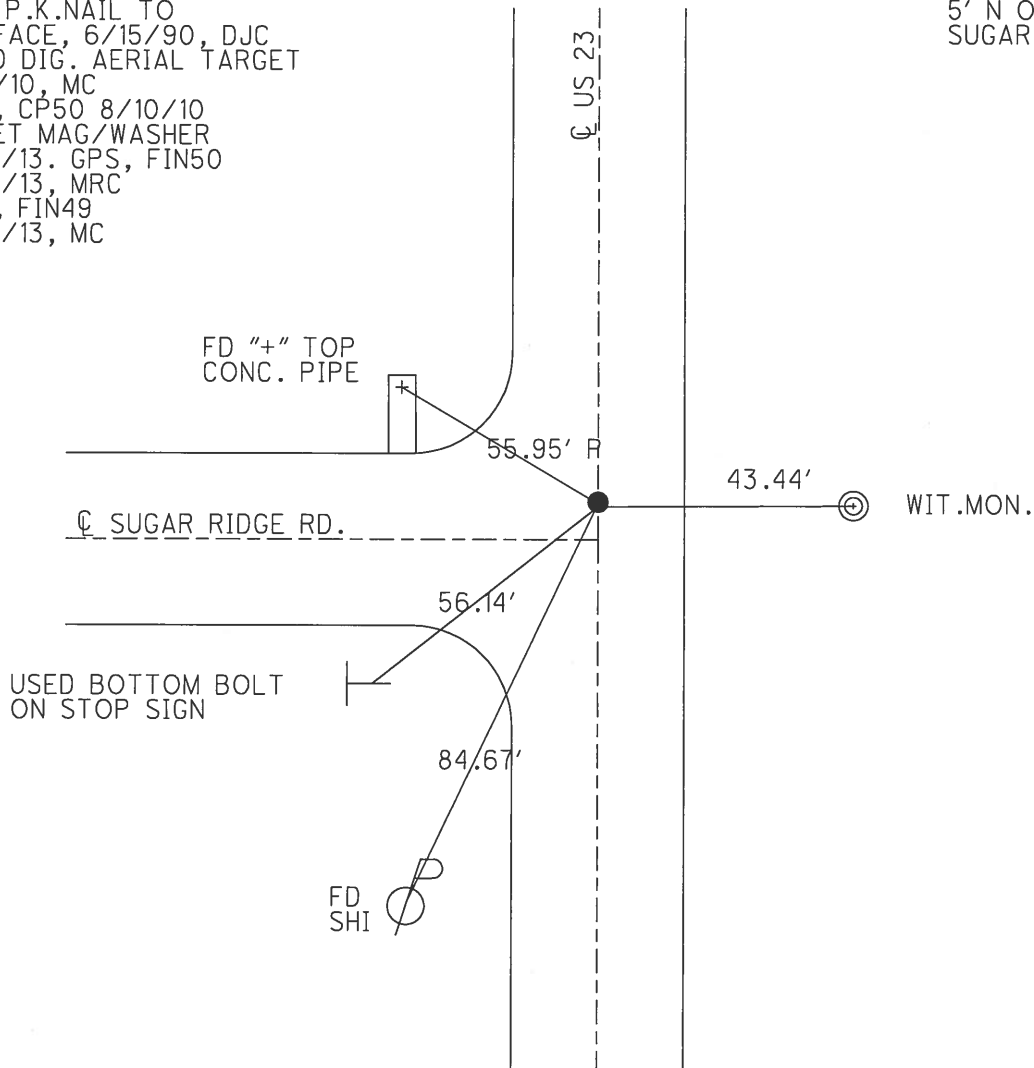
TYPE MONUMENT CAPPED IPIN  
 ON SURFACE - BELOW 0.4'  
 LEFT - ℄ PAV'T - RIGHT ON  
11.6' TO E. EDGE PAVEMENT  
 S.L.M. 634+54



GRID: NORTHING: 643035.1 EASTING: 1717466.0

RECORD:  
 SET P.K.NAIL TO  
 SURFACE, 6/15/90, DJC  
 NEED DIG. AERIAL TARGET  
 7/2/10, MC  
 GPS, CP50 8/10/10  
 RESET MAG/WASHER  
 3/12/13. GPS, FIN50  
 3/13/13, MRC  
 GPS, FIN49  
 3/13/13, MC

NOTE:  
 5' N OF  
 SUGAR RIDGE RD ℄



PERSONNEL TITLE PERSONNEL TITLE

Schneider  
Mosser  
Barbour  
Potts

COUNTY San-Wood DATE 2-11-70

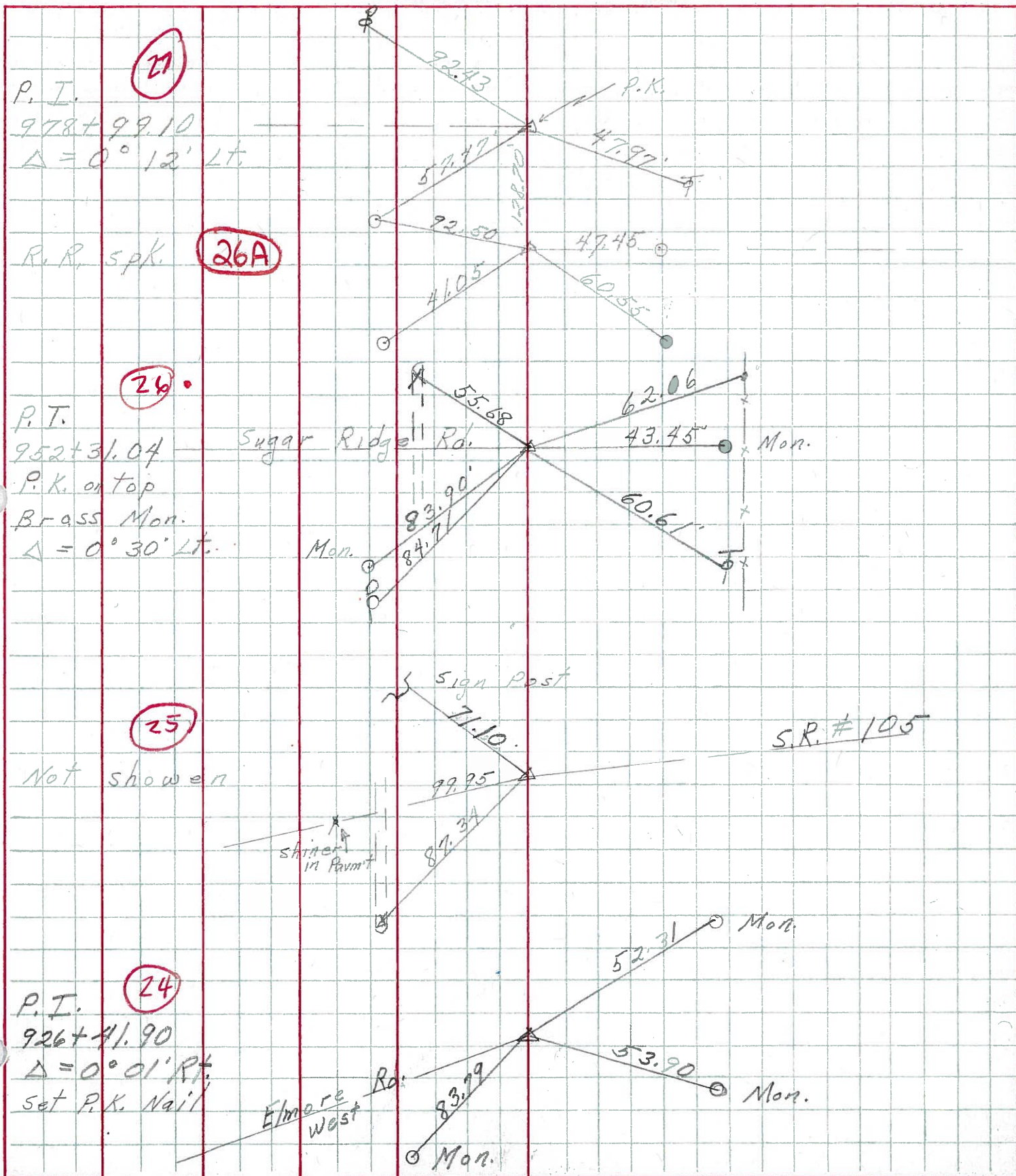
S. R. 23 WEATHER cloudy

SEC. U.S. #6 to U.S. #20 TEMP. 30°

DESCRIPTION Ties for Control Points

JOB NO.

LEFT CENTER LINE RIGHT



P.I. **(21)**  
 978+99.10  
 $\Delta = 0^\circ 12' \text{ Lt.}$

R.R. spk. **(26A)**

P.T. **(24)**  
 952+31.04  
 P.K. on top  
 Brass Mon.  
 $\Delta = 0^\circ 30' \text{ Lt.}$

**(25)**  
 Not shown

P.I. **(24)**  
 926+41.90  
 $\Delta = 0^\circ 01' \text{ Rt.}$   
 set P.K. Nail

Sugar Ridge Rd.

Elmore Rd. West

Sign Post

S.R. #105

shiner in Pavmt

Mon.

Mon.

Mon.

PERSONNEL	TITLE	PERSONNEL	TITLE	COUNTY	DATE
<u>Swordan</u>	<u>Notes</u>	<u>Rice</u>		<u>Jaw-Woo</u>	<u>6-30-60</u>
<u>Cronin</u>				<u>23</u>	
<u>Holcomba</u>				S. R. <u>#199</u>	WEATHER <u>Clear</u>
<u>Sage</u>				SEC. <u>U.S.#6 to U.S.#20</u>	TEMP. <u>+80°</u>

DESCRIPTION Tie for Control Points JOB NO. \_\_\_\_\_

