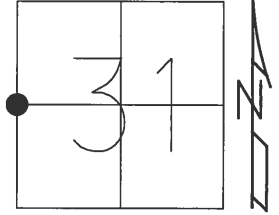


O.D.O.T. DISTRICT 2 SURVEY OFFICE (USE ONLY)

PERSONNEL \_\_\_\_\_ REFERENCE NO. 26 A SHEET 41 OF 51  
 NOTES HUSS DATE 4/20/12 ROUTE US 23  
 H.C. CANTERBURY WEATHER CLEAR COUNTY SANDUSKY  
 R.C. HOMAN TEMP. 62° TOWNSHIP WOODVILLE  
 \_\_\_\_\_ SECTION 31  
 \_\_\_\_\_ T 6 N R 13 E

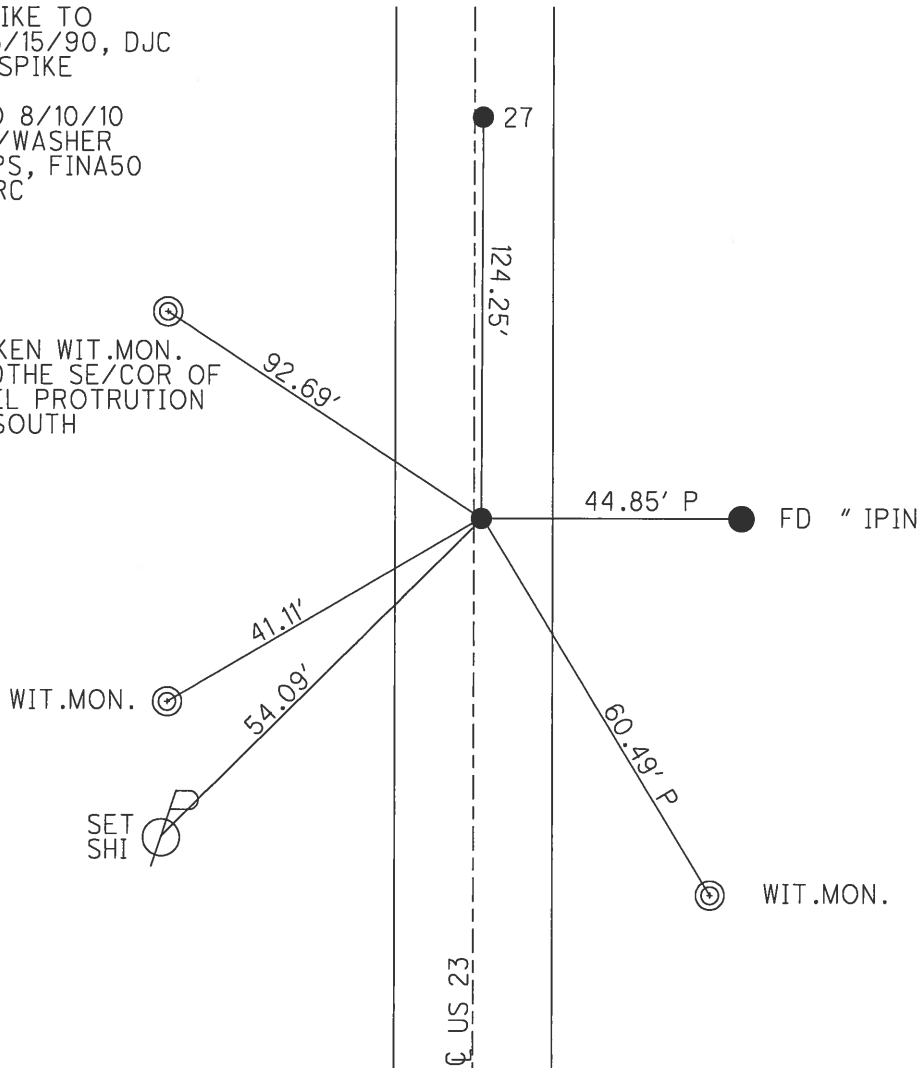
TYPE MONUMENT R.R.SPIKE  
 ON SURFACE - BELOW 2"  
 LEFT - Q PAV'T - ~~RIGHT~~ 0.7'  
10.8' TO LT EDGE PAVEMENT  
 S.L.M. 661+22



GRID: NORTHING: 645578.2 EASTING: 1717519.0

RECORD:  
 SET R.R.SPIKE TO  
 SURFACE, 6/15/90, DJC  
 FD SM.R.R.SPIKE  
 7/2/10, MC  
 GPS, CPA50 8/10/10  
 RESET MAG/WASHER  
 3/12/13, GPS, FINA50  
 3/13/13, MRC

BROKEN WIT.MON.  
 USED THE SE/COR OF  
 STEEL PROTRUTION  
 TO SOUTH



PERSONNEL TITLE PERSONNEL TITLE COUNTY San-Wood DATE 2-11-70  
Schneider \_\_\_\_\_  
Mosser \_\_\_\_\_ S. R. 23 WEATHER cloudy  
Barbour \_\_\_\_\_  
Potts \_\_\_\_\_ SEC. U.S. #6 to U.S. #20 TEMP. 30°  
 DESCRIPTION Ties for Control Points JOB NO. \_\_\_\_\_

