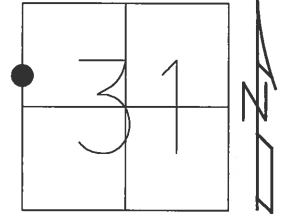


O.D.O.T. DISTRICT 2 SURVEY OFFICE (USE ONLY)

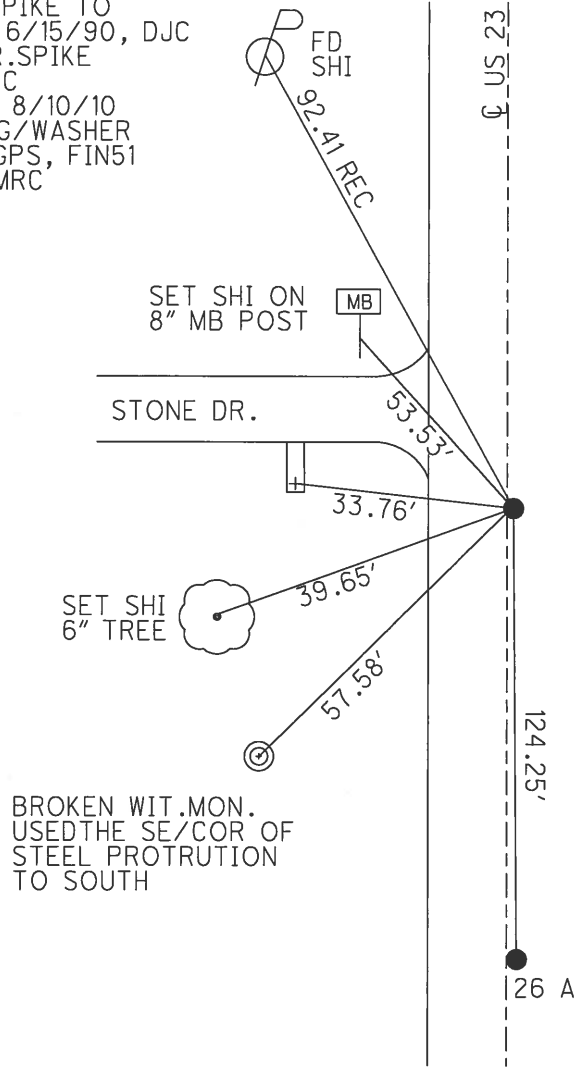
PERSONNEL	REFERENCE NO.	<u>27</u>	SHEET	<u>42</u>	OF	<u>51</u>
NOTES	HUSS	DATE	<u>4/20/12</u>	ROUTE	<u>US 23</u>	
H.C.	<u>CANTERBURY</u>	WEATHER	<u>CLEAR</u>	COUNTY	<u>SANDUSKY</u>	
R.C.	<u>HOMAN</u>	TEMP.	<u>62°</u>	TOWNSHIP	<u>WOODVILLE</u>	
				SECTION	<u>31</u>	
				T	<u>6</u>	R
				N		E

TYPE MONUMENT R.R.SPIKE
 ON SURFACE - BELOW 2"
 LEFT - Q PAV'T - ~~RIGHT~~ 0.7'
10.7' TO LT EDGE PAVEMENT
 S.L.M. 662+46



GRID: NORTHING: 645703.3 EASTING: 1717522.0

RECORD:
 SET R.R.SPIKE TO
 SURFACE, 6/15/90, DJC
 FD SM.R.R.SPIKE
 7/2/10, MC
 GPS, CP51 8/10/10
 RESET MAG/WASHER
 3/12/13. GPS, FIN51
 3/13/13, MRC



PERSONNEL TITLE PERSONNEL TITLE

Schneider

COUNTY San-Wood DATE 2-11-70

Mosser

S. R. 23 WEATHER cloudy

Barbour

SEC. U.S. #6 to U.S. #20 TEMP. 30°

Potts

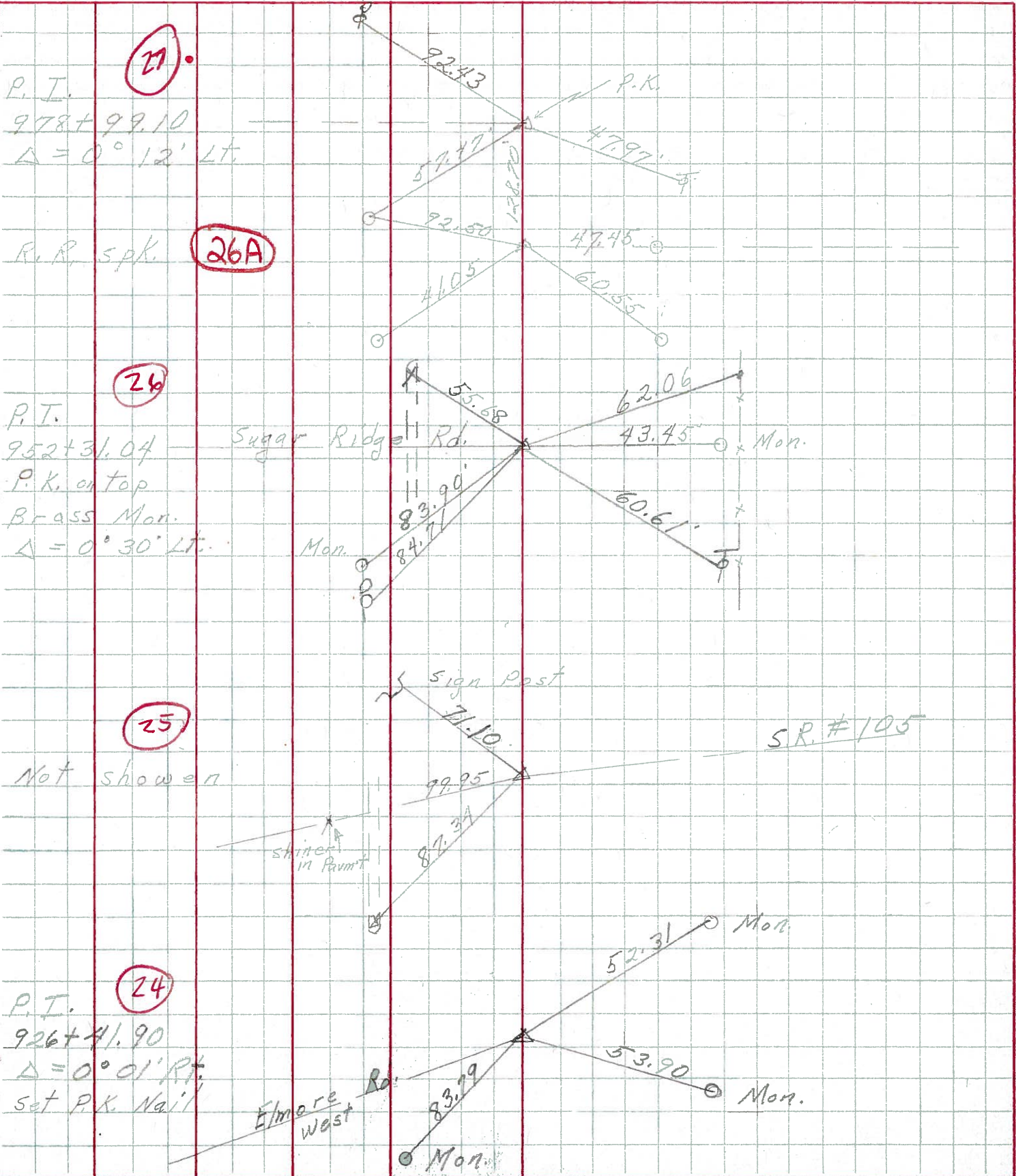
DESCRIPTION Ties for Control Points

JOB NO.

LEFT

CENTER LINE

RIGHT



PERSONNEL TITLE PERSONNEL TITLE COUNTY San-Woo DATE 6-30-60
Sworden Notes Rice 23
Cronin S. R. #199 WEATHER Clear
Holcomba SEC. U.S.#6 to U.S.#20 TEMP. +80°
Saga

DESCRIPTION Tie for Control Points JOB NO.

