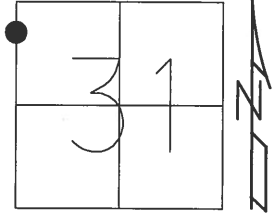


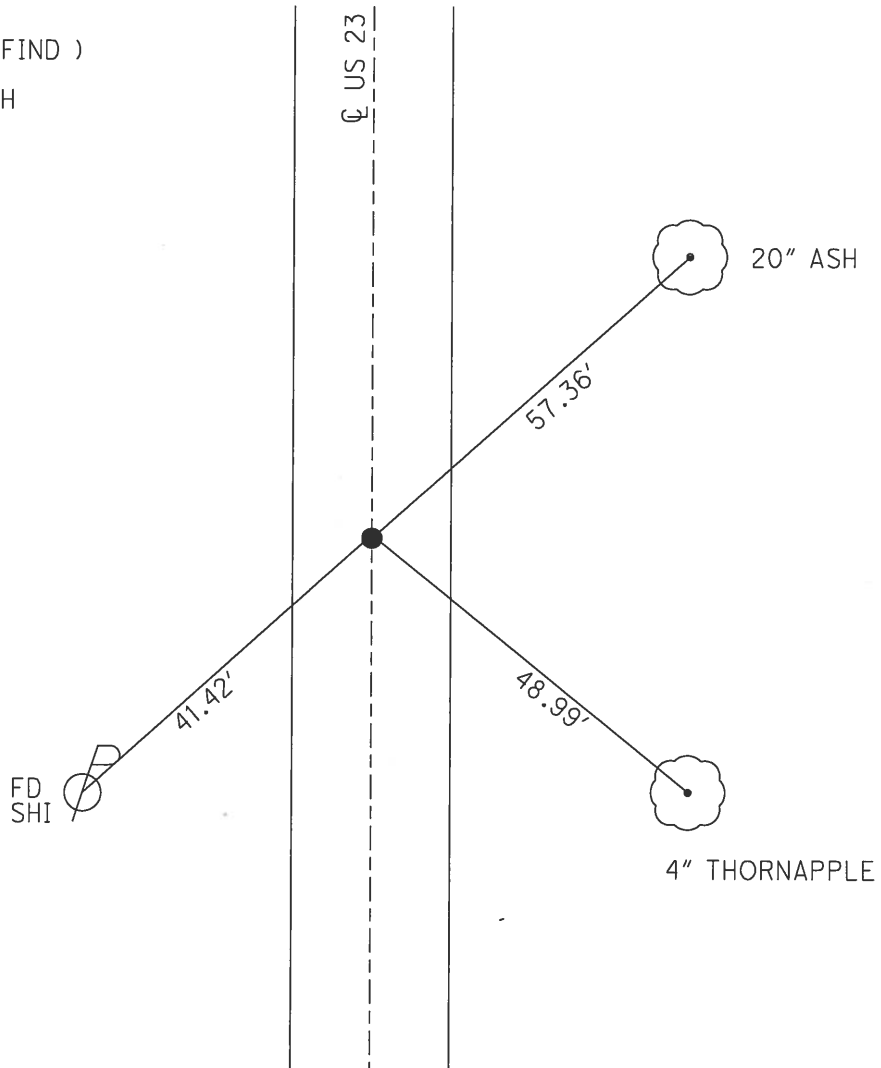
O.D.O.T. DISTRICT 2 SURVEY OFFICE (USE ONLY)

PERSONNEL _____ REFERENCE NO. 28 SHEET 43 OF 51
NOTES SCHNEIDER DATE 2/11/70 ROUTE US 23
H.C. MOSSER WEATHER CLOUDY COUNTY SANDUSKY
R.C. BARBOUR TEMP. 35° TOWNSHIP WOODVILLE
POTTS SECTION 31
T 6 N R 13 E

TYPE MONUMENT _____ DNF
ON SURFACE - BELOW _____
LEFT - Q PAV'T - RIGHT _____
____ TO ____ EDGE PAVEMENT
S.L.M. 674+70
GRID: NORTHING: _____ EASTING: _____

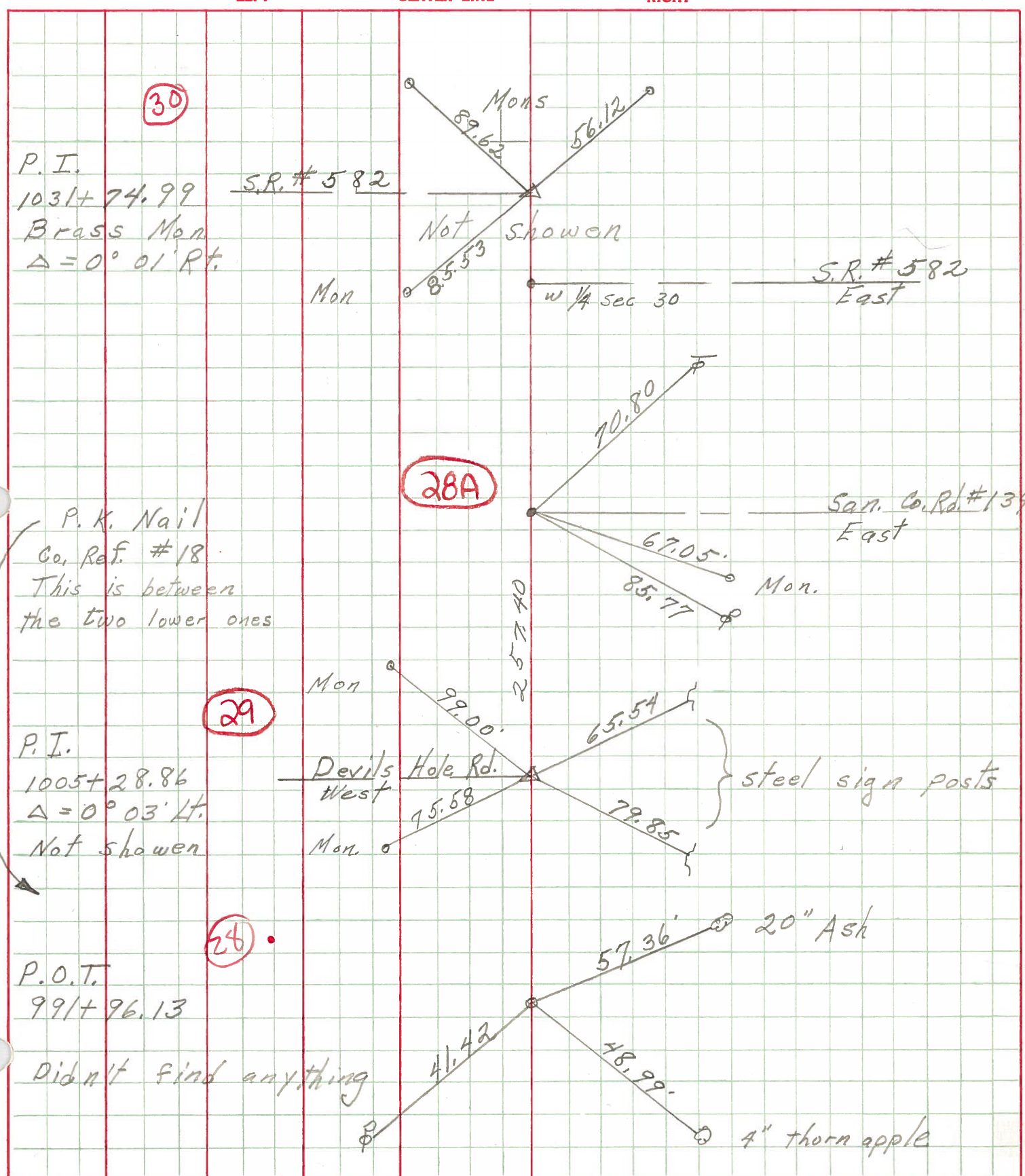


NOTE:
P.O.T. (DID NOT FIND)
DNF, 8/10/10, SAH



PERSONNEL	TITLE	PERSONNEL	TITLE	COUNTY	DATE	WEATHER	TEMP.
Schneider				San. Wood	2-11-70	Cloudy	35°
Mosser				S. R. 23			
Barbour				SEC. U.S. #6 to U.S. #20			
Potts							

DESCRIPTION Ties for Control Points JOB NO. _____



PERSONNEL TITLE PERSONNEL TITLE COUNTY San-Woo DATE 10/4/60
Swordan Notes 23
Holcombe S. R. #199 WEATHER
Sage SEC. U.S. #6 No. 11 to U.S. #20 TEMP.

DESCRIPTION Ties For Control Points JOB NO.
 LEFT CENTER LINE RIGHT

