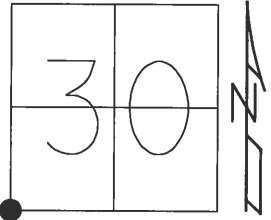


O.D.O.T. DISTRICT 2 SURVEY OFFICE (USE ONLY)

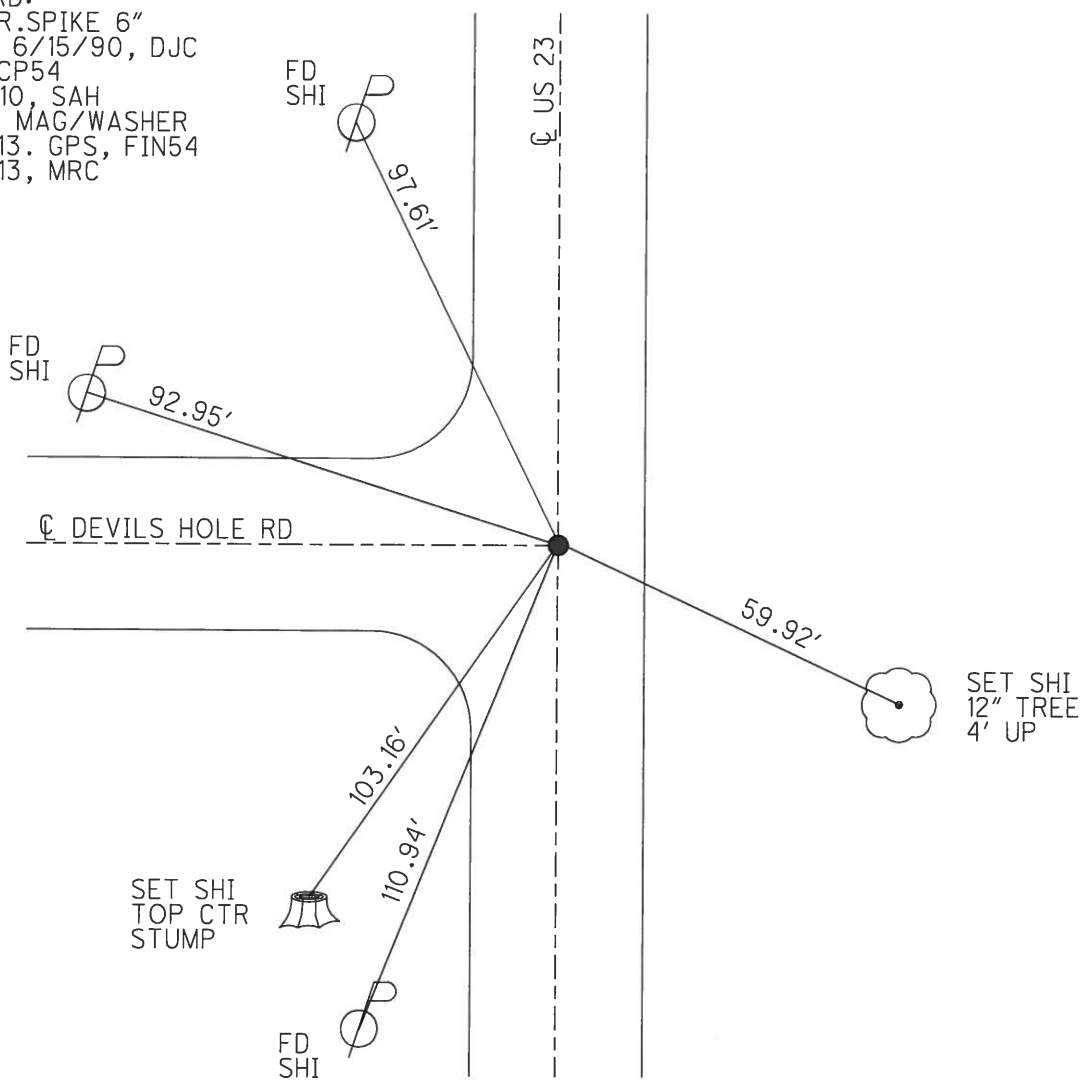
PERSONNEL	REFERENCE NO.	<u>29</u>	SHEET	<u>45</u>	OF	<u>51</u>
NOTES	<u>HUSS</u>	DATE	<u>4/20/12</u>	ROUTE	<u>US 23</u>	
H.C.	<u>CANTERBURY</u>	WEATHER	<u>CLEAR</u>	COUNTY	<u>SANDUSKY</u>	
R.C.	<u>HOMAN</u>	TEMP.	<u>62°</u>	TOWNSHIP	<u>WOODVILLE</u>	
				SECTION	<u>30</u>	
				T	<u>6</u>	R
					<u>N</u>	<u>13</u>
					<u>E</u>	

TYPE MONUMENT SM.R.R.SPIKE  
 ON SURFACE - BELOW 0.6'  
 LEFT - ☉ PAV'T - RIGHT             
11.9' TO E. EDGE PAVEMENT  
 S.L.M. 688+49



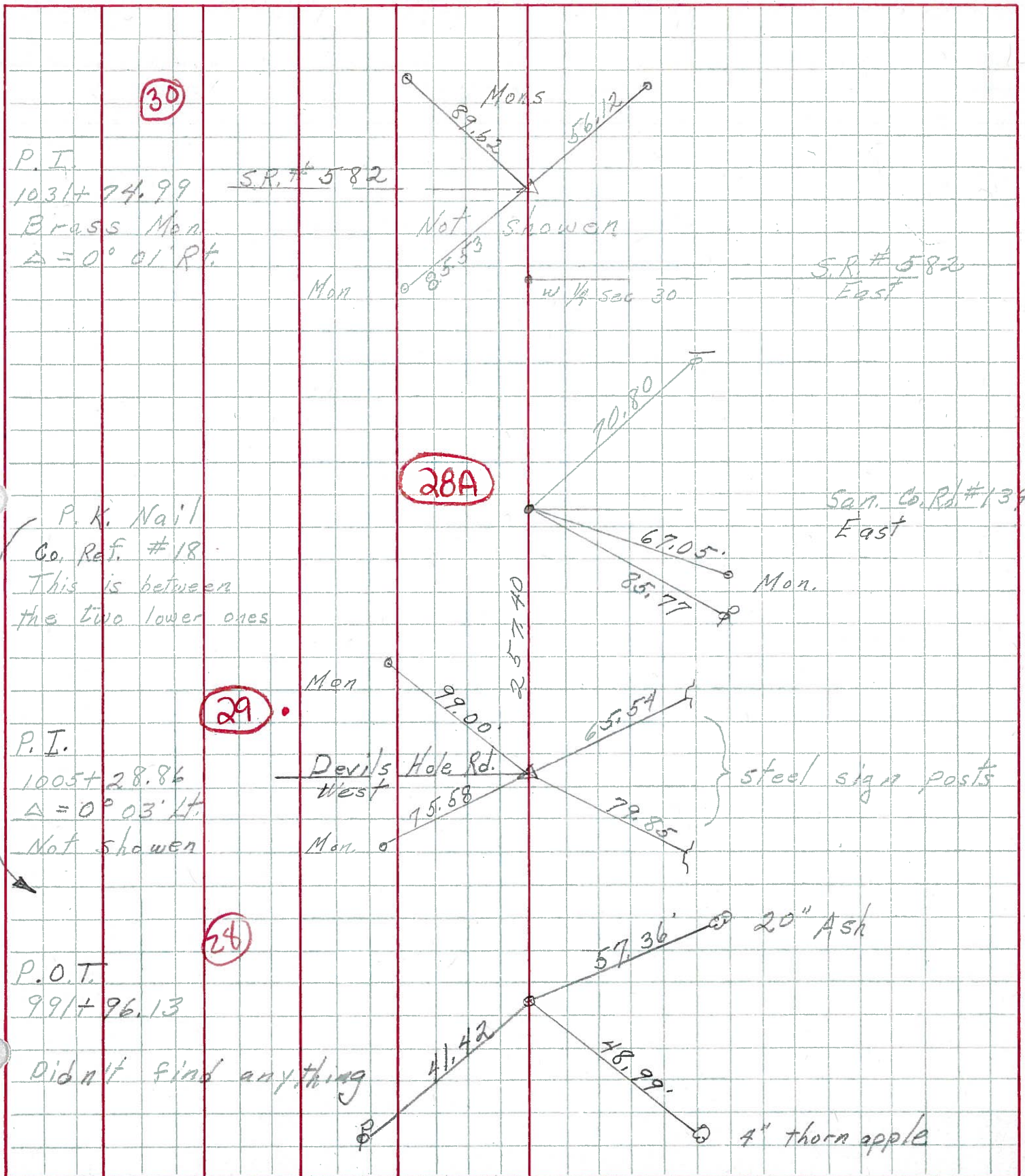
GRID: NORTHING: 648331.6 EASTING: 1717569.0

RECORD:  
 FD R.R.SPIKE 6"  
 DEEP. 6/15/90, DJC  
 GPS, CP54  
 8/10/10, SAH  
 RESET MAG/WASHER  
 3/12/13, GPS, FIN54  
 3/13/13, MRC



PERSONNEL	TITLE	PERSONNEL	TITLE	COUNTY	DATE	WEATHER	TEMP.
Schneider				San. Wood	2-11-70	Cloudy	35°
Mosser				S. R. 23			
Barbour				SEC U.S. #6 to U.S. #20			
Potts							

DESCRIPTION Ties for Control Points JOB NO. \_\_\_\_\_



PERSONNEL TITLE PERSONNEL TITLE COUNTY San-Woo DATE 10/4/60  
Swordan Notes 23  
Holcombe S. R. #199 WEATHER  
Sage SEC. U.S. #6 North to U.S. #20 TEMP.

DESCRIPTION Ties For Control Points JOB NO.

