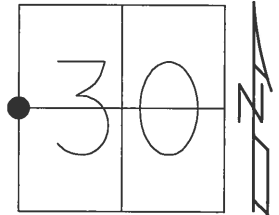


O.D.O.T. DISTRICT 2 SURVEY OFFICE (USE ONLY)

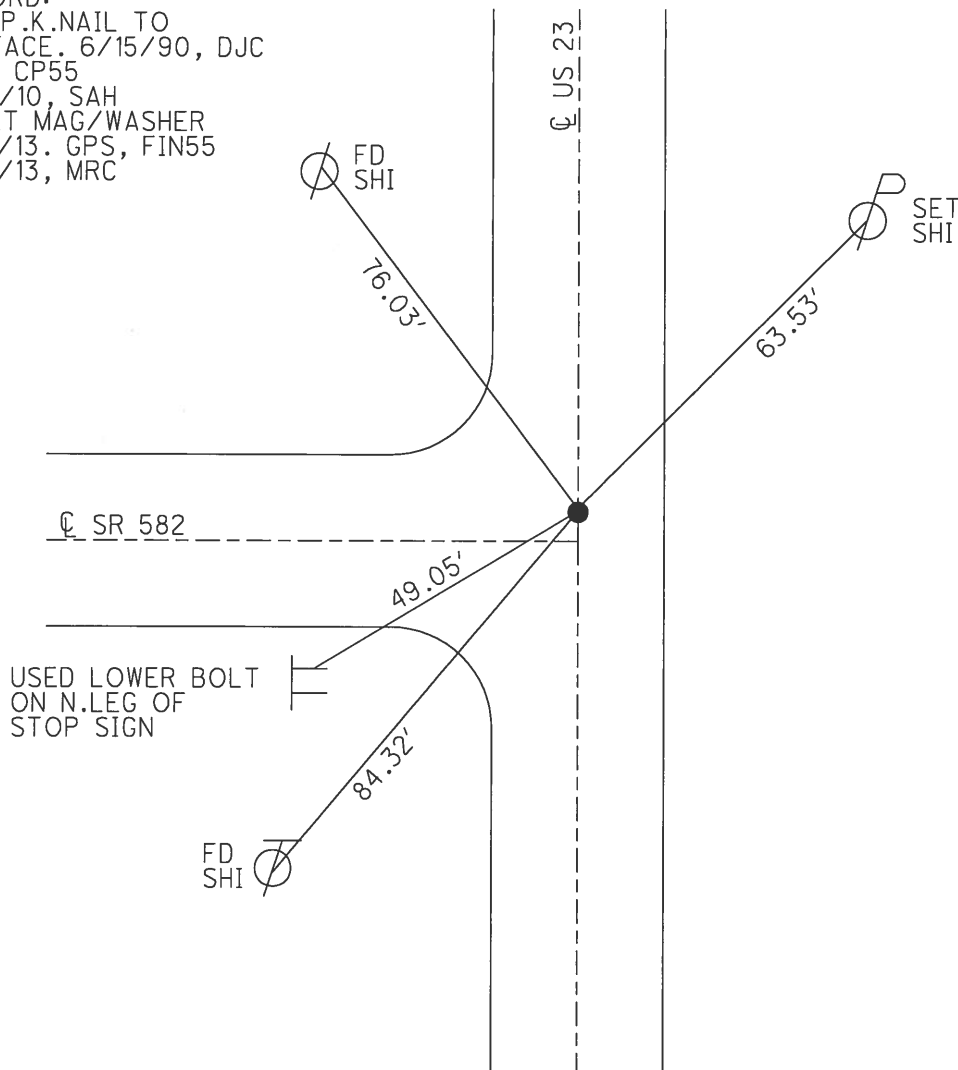
PERSONNEL	REFERENCE NO.	<u>30</u>	SHEET	<u>46</u>	OF	<u>51</u>
NOTES	<u>HUSS</u>	DATE	<u>4/20/12</u>	ROUTE	<u>US 23</u>	
H.C.	<u>CANTERBURY</u>	WEATHER	<u>CLEAR</u>	COUNTY	<u>SANDUSKY</u>	
R.C.	<u>HOMAN</u>	TEMP.	<u>62°</u>	TOWNSHIP	<u>WOODVILLE</u>	
				SECTION	<u>30</u>	
				T. <u>6</u> N	R. <u>13</u> E	

TYPE MONUMENT IPIN, "+ "CUT
 ON SURFACE - BELOW 0.5'
 LEFT - Q PAV'T - RIGHT ON, 3.7' N. OF Q WEST
12.2' TO E. EDGE PAVEMENT
 S.L.M. 714+95



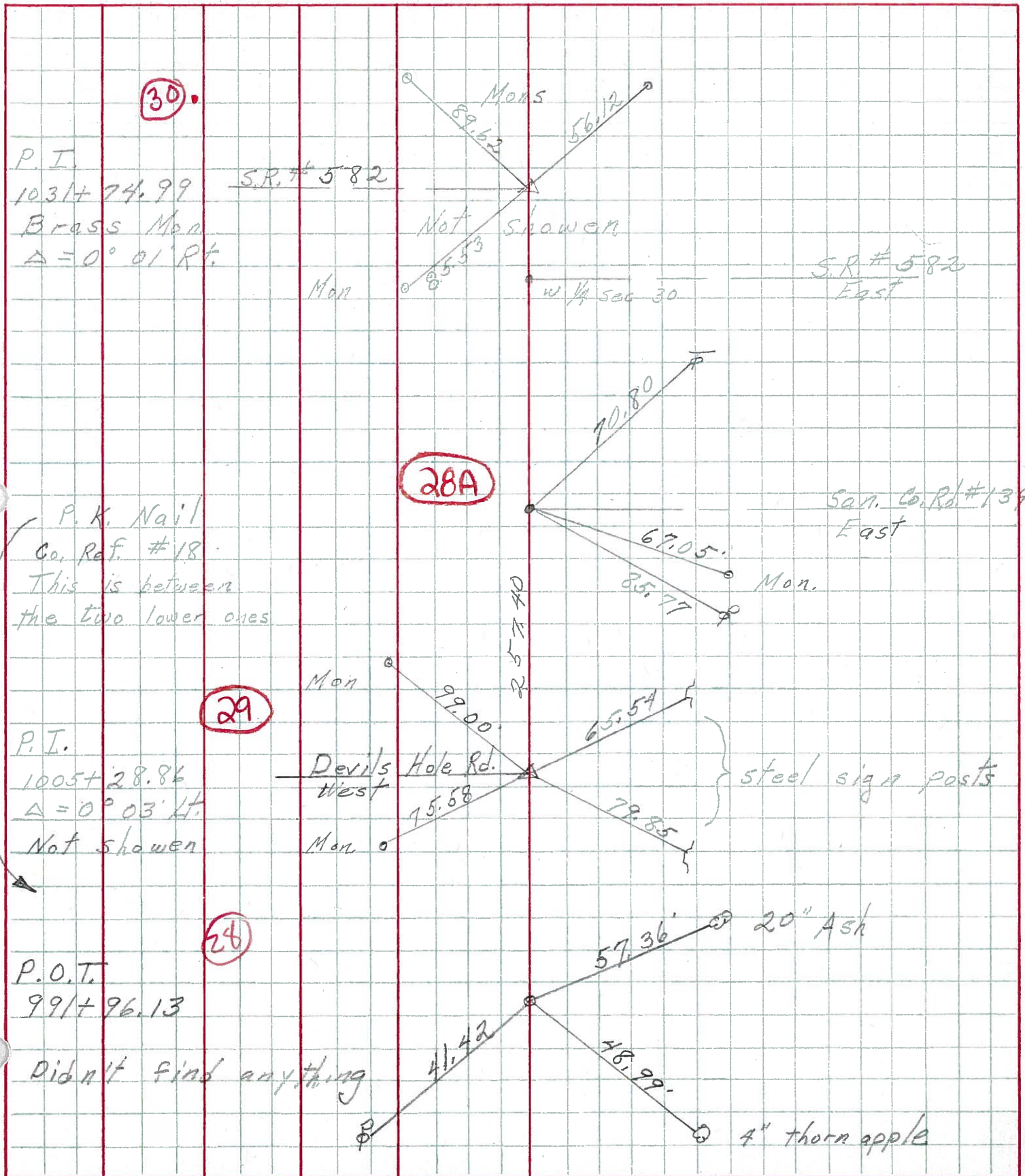
GRID: NORTHING: 650977.20 EASTING: 1717614.00

RECORD:
 SET P.K. NAIL TO
 SURFACE. 6/15/90, DJC
 GPS, CP55
 8/10/10, SAH
 RESET MAG/WASHER
 3/12/13. GPS, FIN55
 3/13/13, MRC



PERSONNEL	TITLE	PERSONNEL	TITLE	COUNTY	DATE
Schneider				San. Wood	2-11-70
Mosser				S. R. 23	WEATHER Cloudy
Barbour				SEC. U.S. #6 to U.S. #20	TEMP. 35°
Potts					

DESCRIPTION Ties for Control Points JOB NO. _____



PERSONNEL TITLE PERSONNEL TITLE COUNTY San-Woo DATE 10/4/60
Swordan Notes 23
Holcombe S. R. #199 WEATHER
Sage SEC. U.S. #6 North To U.S. #20 TEMP.

DESCRIPTION Ties For Control Points JOB NO.

