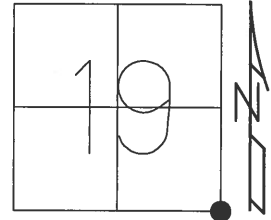


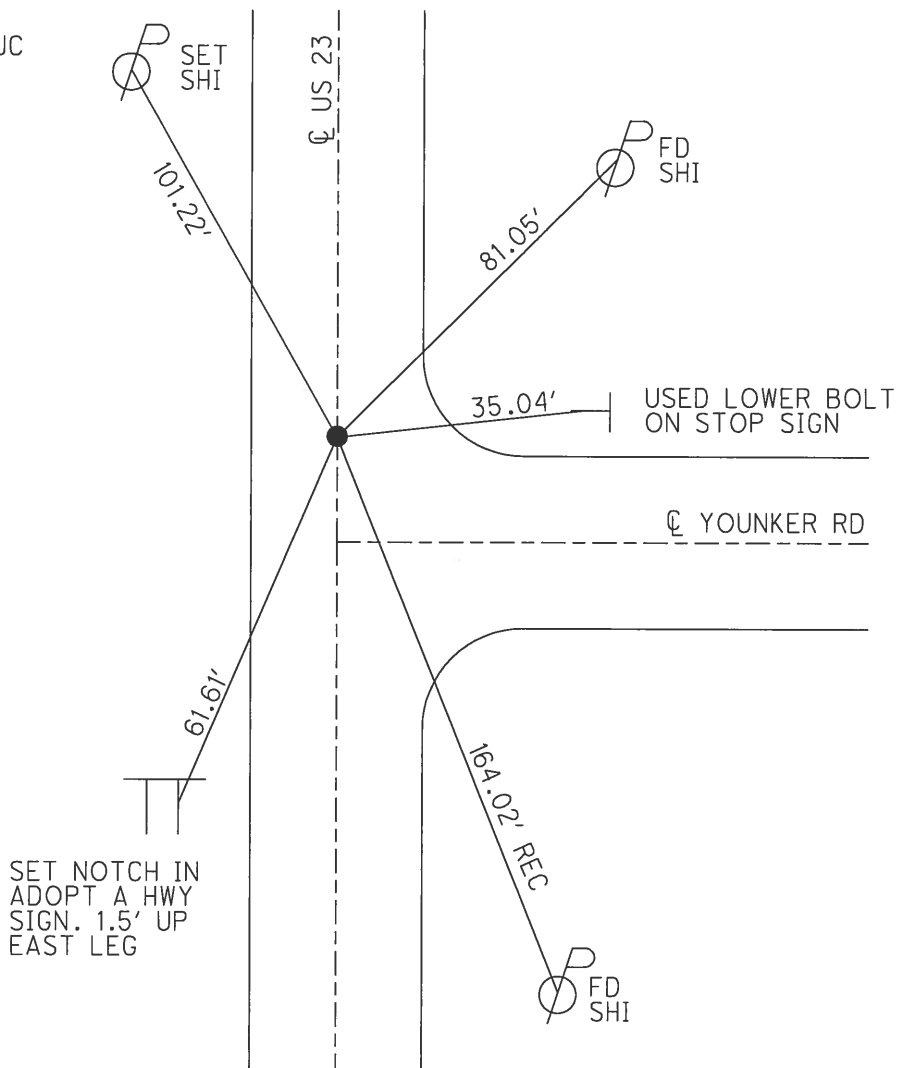
O.D.O.T. DISTRICT 2 SURVEY OFFICE (USE ONLY)

PERSONNEL	REFERENCE NO.	31	SHEET	47	OF	51
NOTES	HUSS	DATE	4/20/12	ROUTE	US 23	
H.C.	CANTERBURY	WEATHER	CLEAR	COUNTY	SANDUSKY	
R.C.	HOMAN	TEMP.	62°	TOWNSHIP	WOODVILLE	
				SECTION	19	
				T	6	N
				R	13	E

TYPE MONUMENT P.K. NAIL/WASHER  
 ON SURFACE - BELOW ON  
 LEFT - CL PAV'T - ~~RIGHT~~ 0.7', 7.5' N. OF E.C  
10.6' TO W. EDGE PAVEMENT  
 S.L.M. 738+70  
 GRID: NORTHING: 653352.20 EASTING: 1717655.00



RECORD:  
 SET P.K.NAIL TO  
 SURFACE. 6/15/90, DJC  
 FD P.K.NAIL  
 7/6/10, MC  
 GPS, CP56  
 8/10/10, SAH  
 RESET MAG/WASHER  
 3/12/13. GPS, FIN56  
 3/13/13, MRC  
 NOTE: POINT IS  
 264.03' TO REF 57.



PERSONNEL TITLE PERSONNEL TITLE

Schneider

COUNTY San.-Wood DATE 2-16-70

Mosser

S. R. 23 WEATHER Fair

Barbour

SEC. U.S. #6 to U.S. #20 TEMP. 30°

Potts

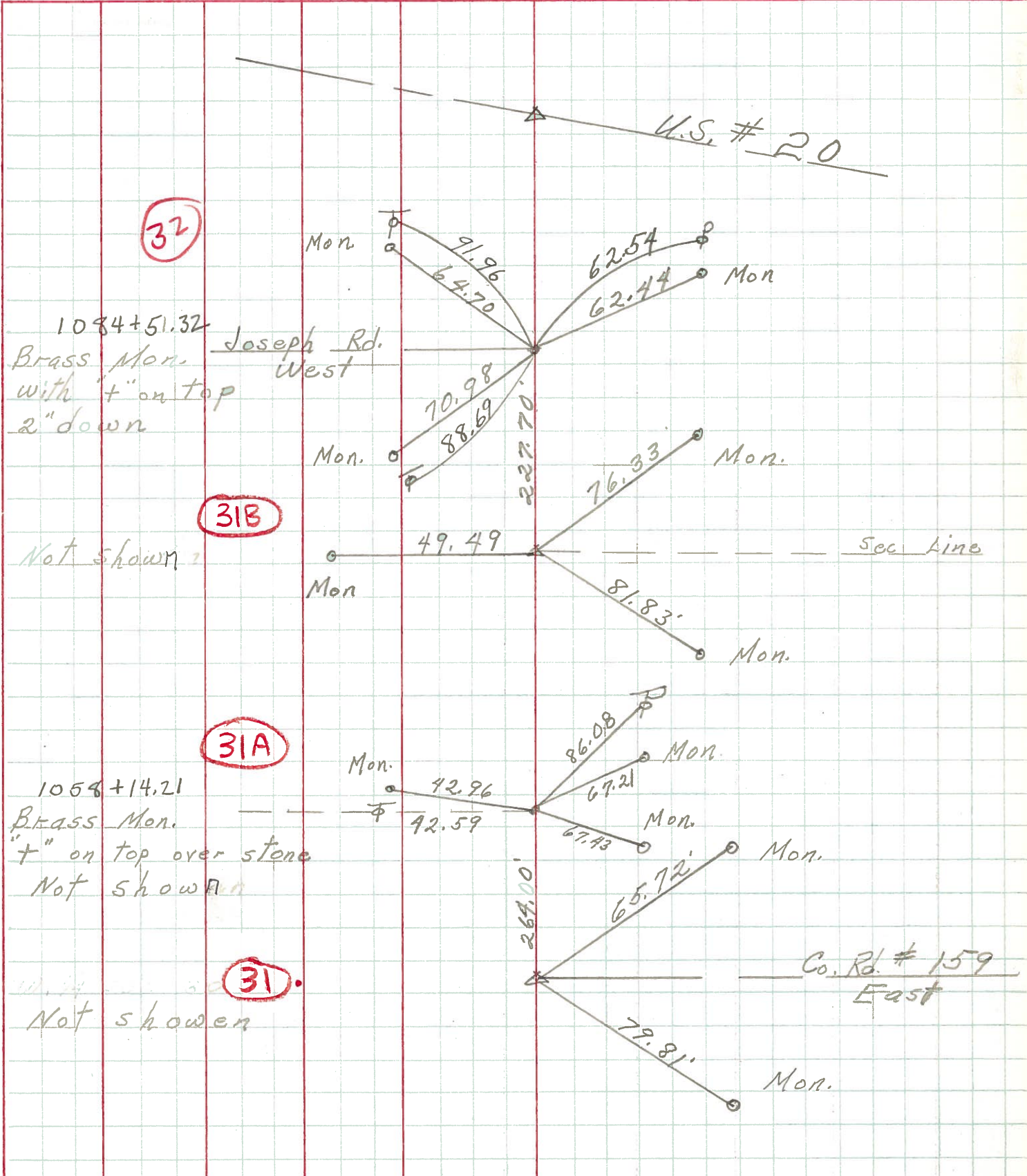
DESCRIPTION Ties for Control Points

JOB NO.

LEFT

CENTER LINE

RIGHT



32

1084+51.32  
Brass Mon.  
with "+" on top  
2" down

31B

Not shown

31A

1058+14.21  
Brass Mon.  
" + " on top over stone  
Not shown

31

Not shown