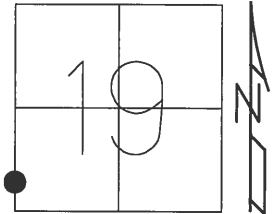


O.D.O.T. DISTRICT 2 SURVEY OFFICE (USE ONLY)

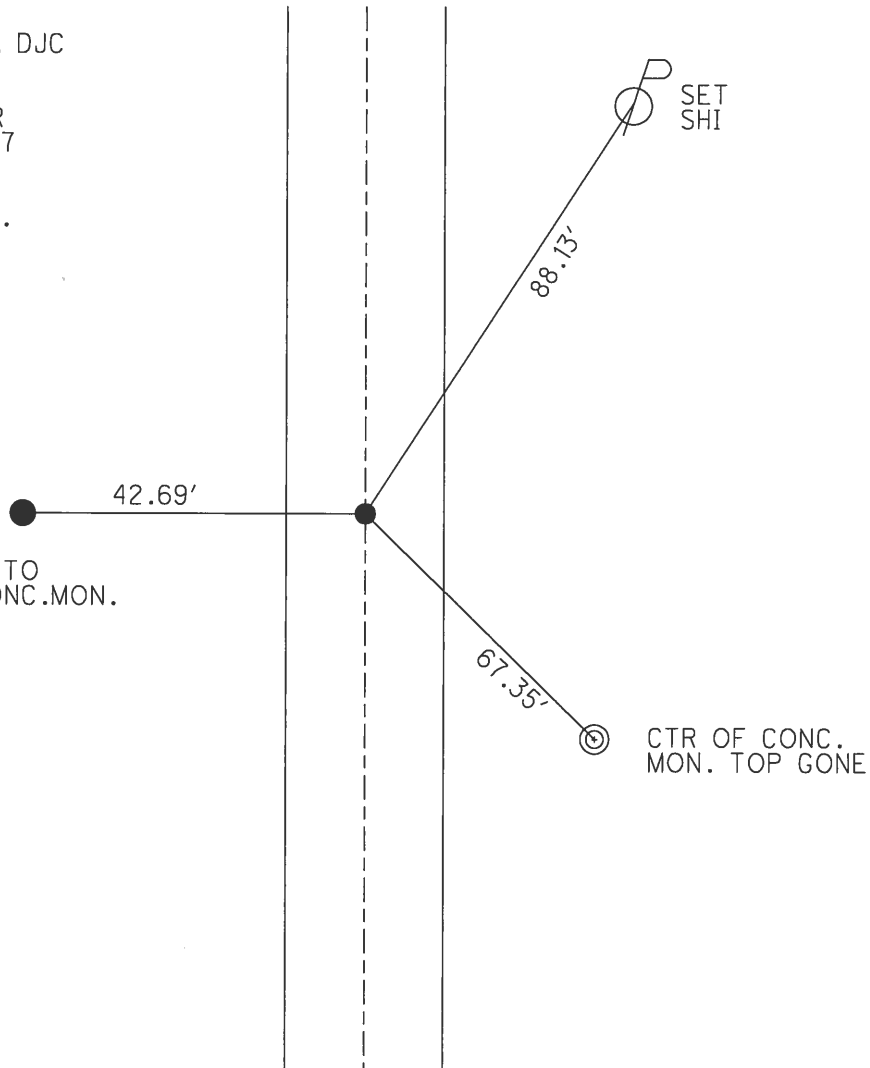
PERSONNEL	REFERENCE NO.	<u>31 A</u>	SHEET	<u>48</u>	OF	<u>51</u>
NOTES	<u>HUSS</u>	DATE	<u>4/20/12</u>	ROUTE	<u>US 23</u>	
H.C.	<u>CANTERBURY</u>	WEATHER	<u>WINDY</u>	COUNTY	<u>SANDUSKY</u>	
R.C.	<u>HOMAN</u>	TEMP.	<u>62°</u>	TOWNSHIP	<u>WOODVILLE</u>	
				SECTION	<u>19</u>	
				<u>T_6 N</u>	<u>R_13 E</u>	

TYPE MONUMENT SHANK  
 ON SURFACE - BELOW 0.2'  
 LEFT - Q PAV'T - RIGHT ON  
- TO - EDGE PAVEMENT  
 S.L.M. 741+34  
 GRID: NORTHING: 653616.10 EASTING: 1717659.00



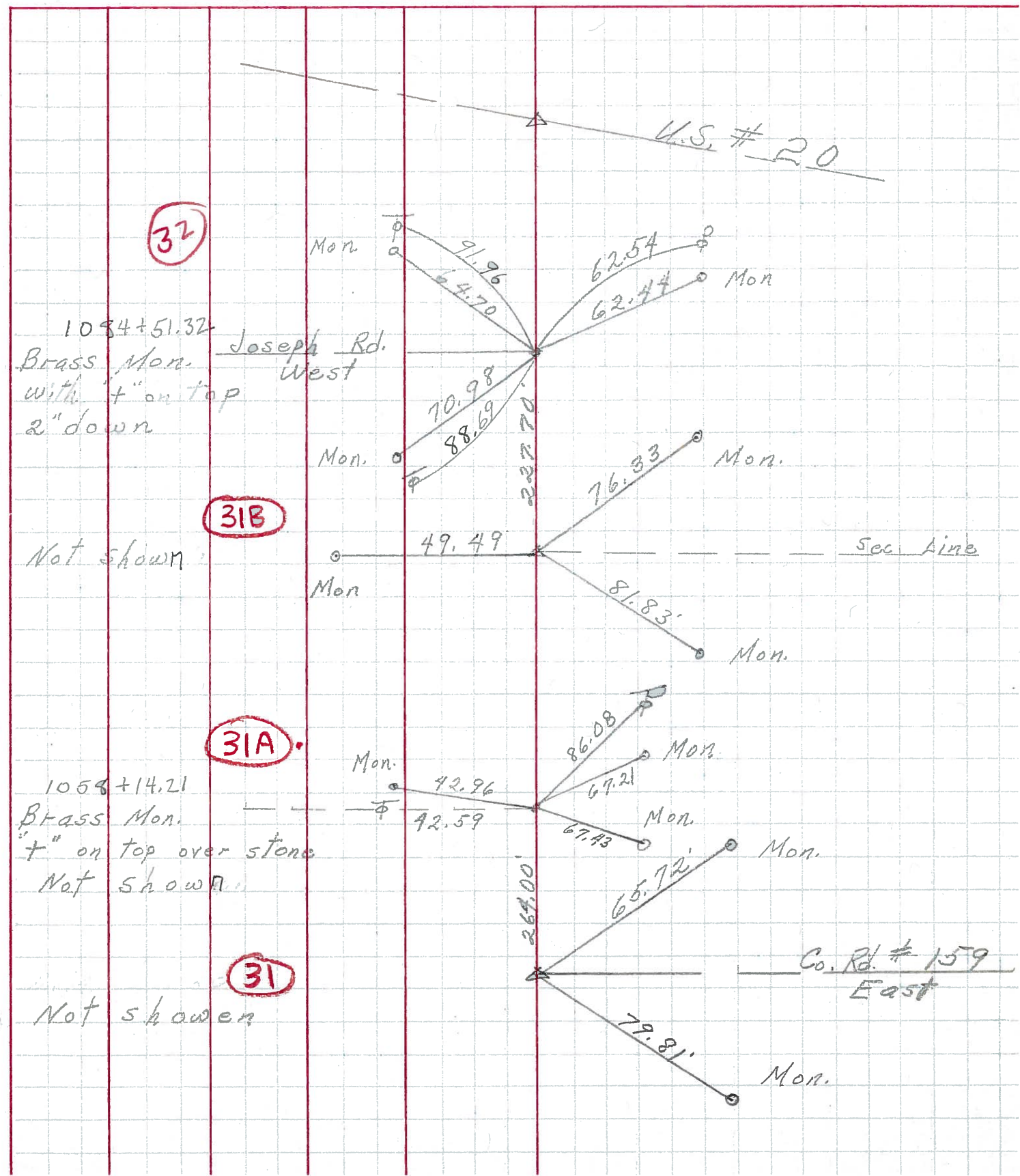
RECORD:  
 SET P.K.NAIL TO  
 SURFACE. 6/15/90, DJC  
 GPS, CP57  
 8/11/10, SAH  
 RESET MAG/WASHER  
 3/12/13. GPS, FIN57  
 3/13/13, MRC  
 NOTE: POINT IS  
 264.03' TO REF 56.

USED GREEN IPIN TO  
 S. OF BROKEN CONC.MON.



PERSONNEL	TITLE	PERSONNEL	TITLE	COUNTY	DATE	WEATHER	TEMP.
Schneider				San.-Wood	2-16-70	Fair	30°
Mosser				S. R. 23			
Barbour				SEC. U.S. #6 to U.S. #20			
Potts							

DESCRIPTION Ties for Control Points JOB NO. \_\_\_\_\_



PERSONNEL TITLE PERSONNEL TITLE COUNTY San-Woo DATE 10/4/60  
Swordan Notes \_\_\_\_\_  
Halcombe \_\_\_\_\_  
Sage \_\_\_\_\_  
 S. R. # 199 WEATHER \_\_\_\_\_  
 SEC. U.S. #6 North to U.S. #20 TEMP. \_\_\_\_\_

DESCRIPTION Ties For Control Points JOB NO. \_\_\_\_\_  
 LEFT CENTER LINE RIGHT

