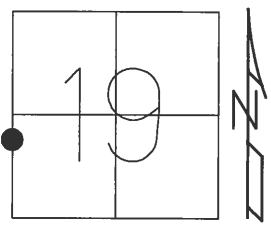


O.D.O.T. DISTRICT 2 SURVEY OFFICE (USE ONLY)

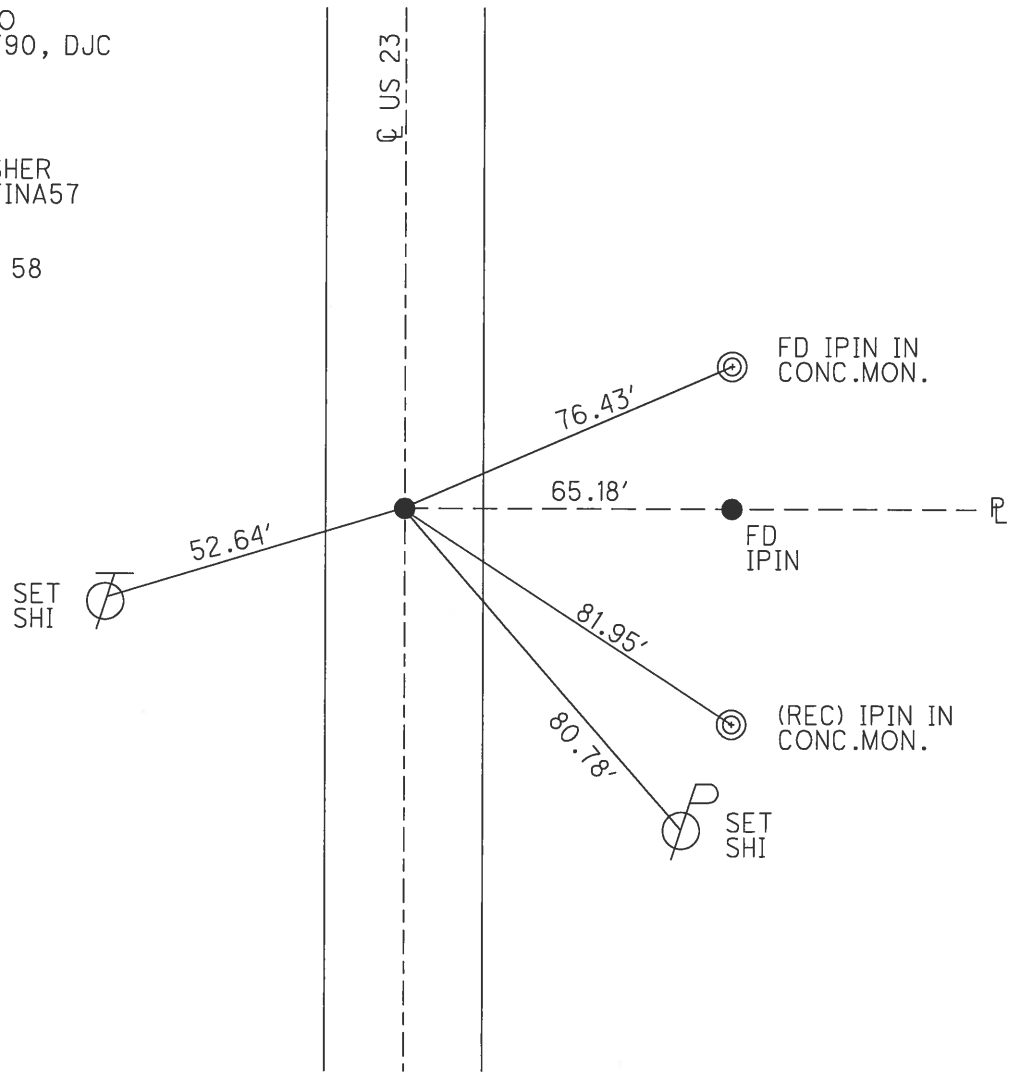
PERSONNEL	REFERENCE NO.	31 B	SHEET	49	OF	51
NOTES	HUSS	DATE	4/20/12	ROUTE	US 23	
H.C.	CANTERBURY	WEATHER	WINDY	COUNTY	SANDUSKY	
R.C.	HUSS	TEMP.	64°	TOWNSHIP	WOODVILLE	
				SECTION	19	
				T	6	N
				R	13	E

TYPE MONUMENT P.K. NAIL/WASHER
 ON SURFACE - BELOW ON
 LEFT - Q PAV'T - ~~RIGHT~~ 0.2'
10.9' TO W EDGE PAVEMENT
 S.L.M. 765+44



GRID: NORTHING: 656025.30 EASTING: 1717699.00

RECORD:
 SET P.K.NAIL TO
 SURFACE. 6/15/90, DJC
 FD P.K.NAIL
 7/6/10, MC
 GPS, CPA57
 8/11/10, SAH
 RESET MAG/WASHER
 3/12/13. GPS, FINA57
 3/13/13, MRC
 NOTE: POINT IS
 227.49' TO REF 58



PERSONNEL TITLE PERSONNEL TITLE

Schneider

COUNTY San.-Wood

DATE 2-16-70

Mosser

S. R. 23

WEATHER Fair

Barbour

SEC. U.S. #6 to U.S. #20

TEMP. 30°

Potts

DESCRIPTION Ties for Control Points

JOB NO.

LEFT CENTER LINE RIGHT

