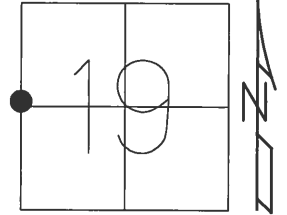


O.D.O.T. DISTRICT 2 SURVEY OFFICE (USE ONLY)

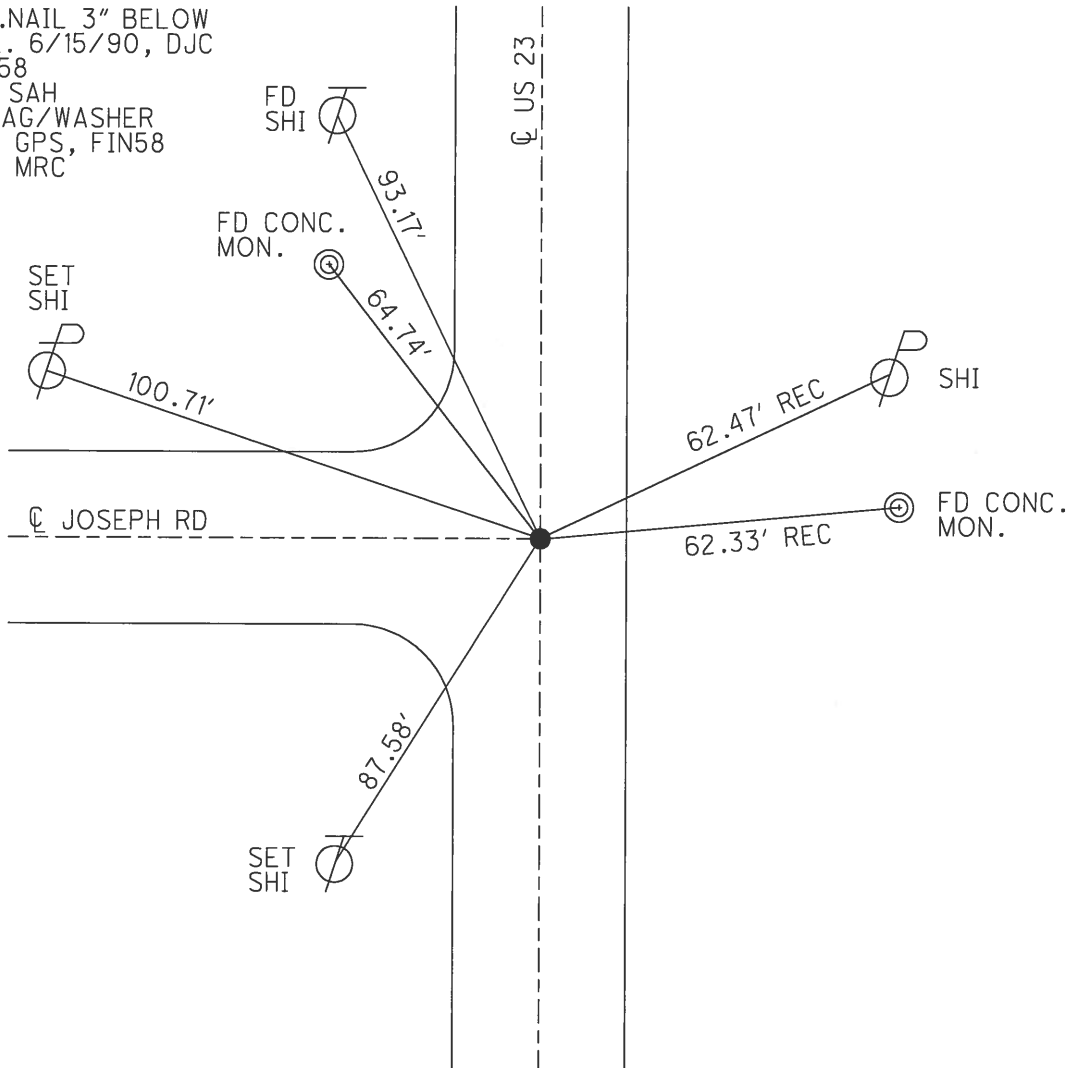
PERSONNEL _____ REFERENCE NO. 32 SHEET 50 OF 51
 NOTES HUSS DATE 4/20/12 ROUTE US 23
 H.C. CANTERBURY WEATHER WINDY COUNTY SANDUSKY
 R.C. HUSS TEMP. 64° TOWNSHIP WOODVILLE
 SECTION 19
 T 6 N R 12 E

TYPE MONUMENT BRASS MON.
 ON SURFACE - BELOW 0.6'
 LEFT - ☉ PAV'T - RIGHT ON
12.2' TO E. EDGE PAVEMENT
 S.L.M. 767+71



GRID: NORTHING: 656252.90 EASTING: 1717703.00

RECORD:
 SET P.K.NAIL 3" BELOW
 SURFACE. 6/15/90, DJC
 GPS, CP58
 8/11/10, SAH
 RESET MAG/WASHER
 3/12/13. GPS, FIN58
 3/13/13, MRC



PERSONNEL TITLE PERSONNEL TITLE

Schneider

COUNTY San.-Wood

DATE 2-16-70

Mosser

S. R. 23

WEATHER Fair

Barbour

SEC. U.S. # 6 to U.S. # 20

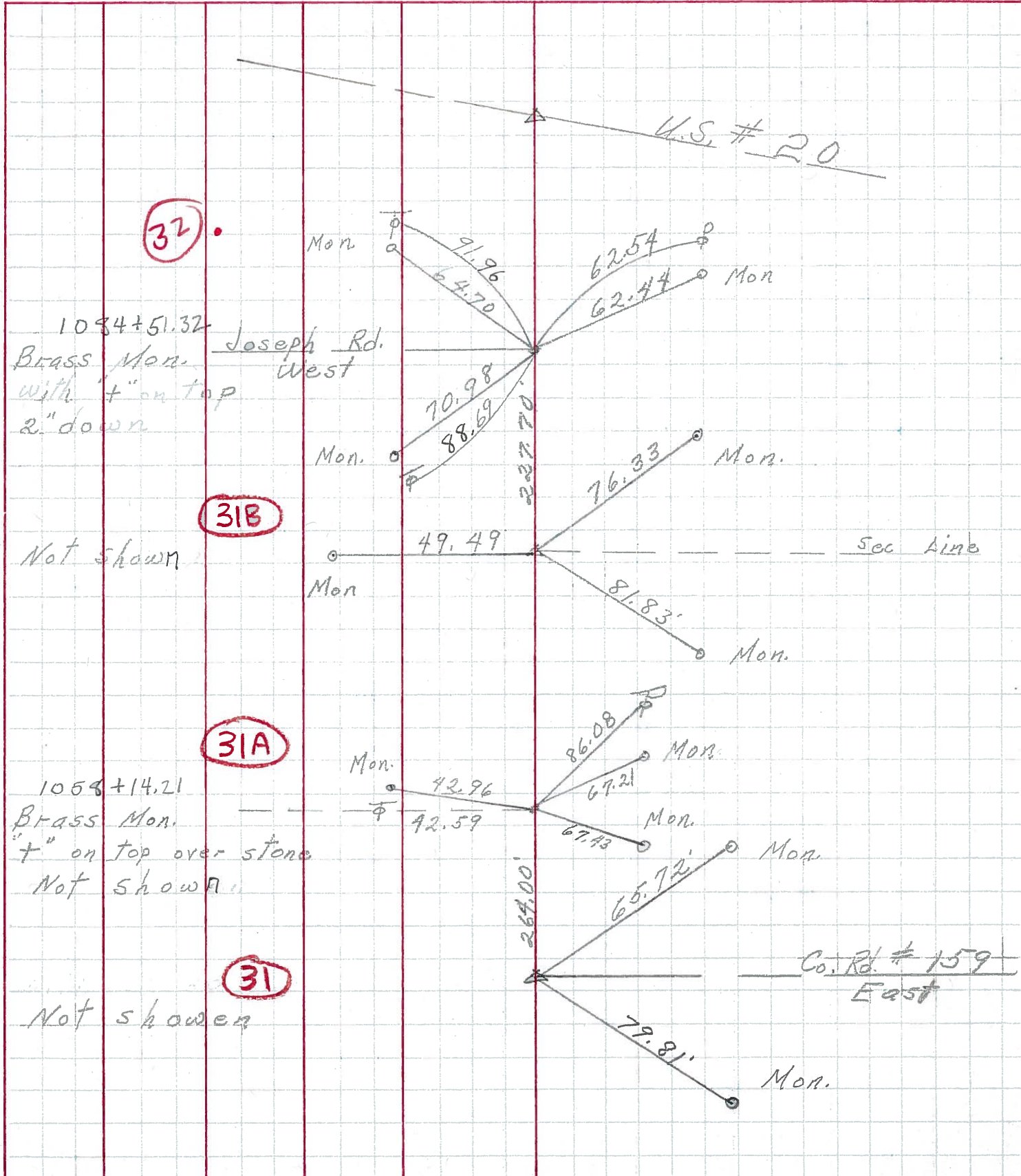
TEMP. 30°

Potts

DESCRIPTION Ties for Control Points

JOB NO.

LEFT CENTER LINE RIGHT



32

31B

31A

31

1084+51.32
Brass Mon.
with + on top
2" down

Not shown

1058+14.21
Brass Mon.
+ on top over stone
Not shown

Not shown

Mon.

Mon.

Mon.

Mon.

Mon.

Mon.

Mon.

Mon.

Mon.

Mon.

Mon.

Mon.

U.S. # 20

Joseph Rd.
West

Sec Line

Co. Rd. # 159
East

227.70'

264.00'

91.96

64.70

62.54

62.44

70.98

88.69

76.33

81.83'

86.08

67.21

67.43

65.72'

79.81'

43.96

42.59

PERSONNEL	TITLE	PERSONNEL	TITLE	COUNTY	DATE
Swordan	Notes			San-Woo	10/4/60
Holcombe				S. R. #199	
Sage				SEC. U.S. #6 North to U.S. #20	TEMP

DESCRIPTION Ties For Control Points JOB NO. _____

