

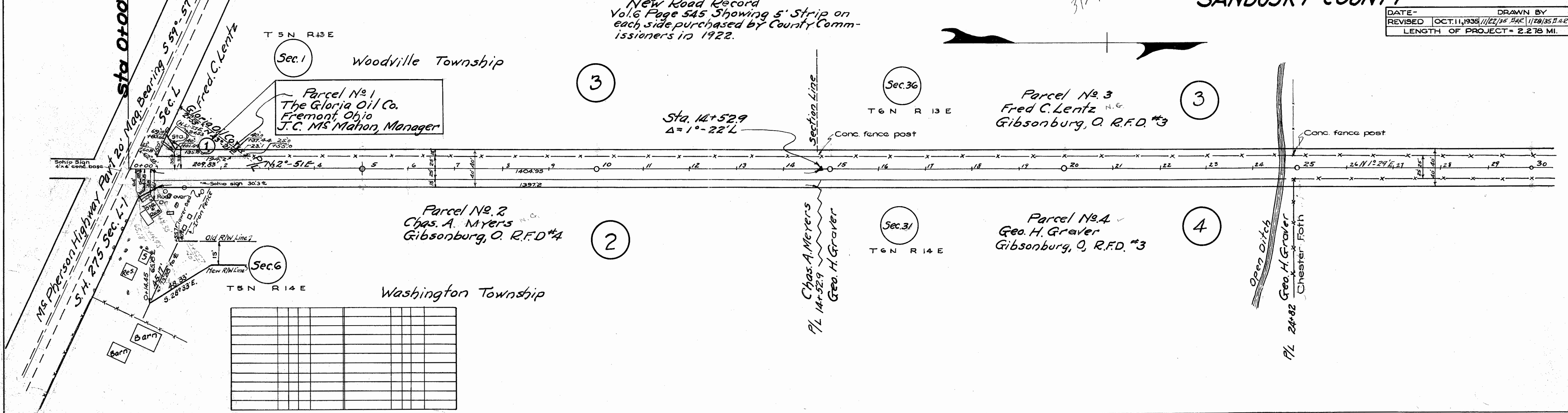
RIGHT-OF-WAY PLANS
S.H. 52 SEC. "A"
SANDUSKY COUNTY

DATE - DRAWN BY
REVISED OCT. 11, 1935 / 1/22/35 H.C. / 1/28/35 H.C.
LENGTH OF PROJECT = 2.276 MI.

R/W checked
comments of standards shown
FJF
3/21/44

Road Record
Vol. 3, Page 143 Established 40' Jan 4, 1845
New Road Record
Vol. 6 Page 545 Showing 5' Strip on
each side purchased by County Comm-
issioners in 1922.

Req. Project
Beg. Sec "A"



Sta. 14+52.9
 $\Delta = 1^\circ - 22' L$

Parcel No. 3
Fred C. Lentz N.G.
Gibsonburg, O. R.F.D. #3

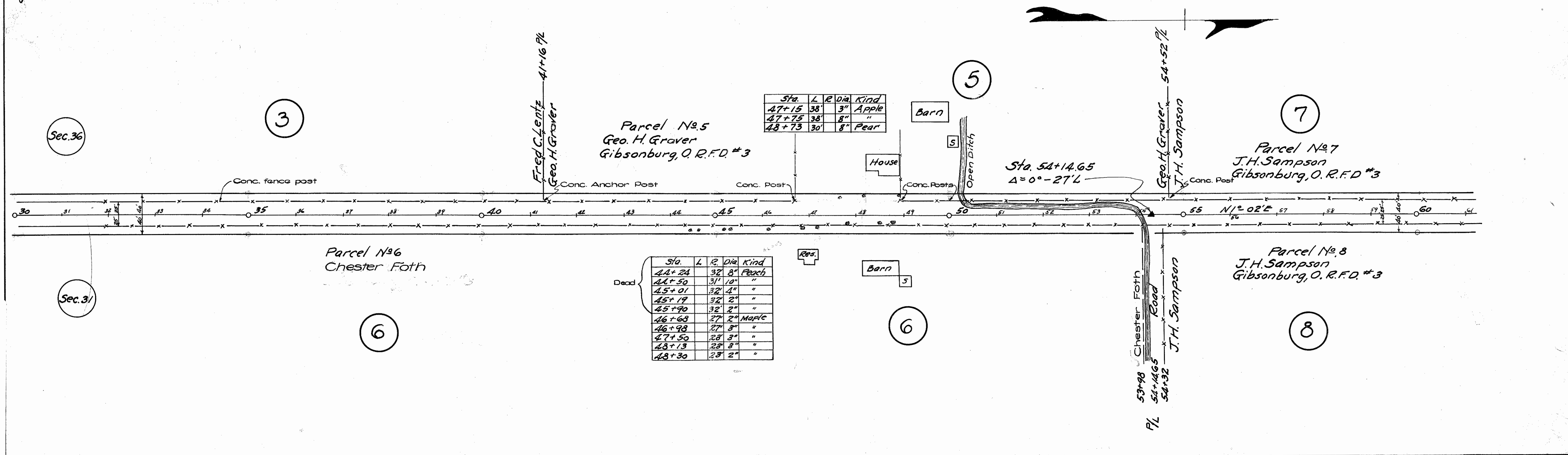
Parcel No. 2
Chas. A. Myers N.G.
Gibsonburg, O. R.F.D. #4

Parcel No. 4
Geo. H. Graver
Gibsonburg, O. R.F.D. #3

Washington Township

Chas. A. Myers
Geo. H. Graver
P/L 14+52.9

Open ditch
Geo. H. Graver
Chester Foth
P/L 24+82



Sta.	L	R	Dia.	Kind
47+15	38'	3"		Apple
47+75	38'	8"		"
48+73	30'	8"		Pear

Dead

Sta.	L	R	Dia.	Kind
44+24	32'	8"		Peach
44+50	31'	10"		"
45+01	32'	4"		"
45+19	32'	2"		"
45+90	32'	2"		"
46+68	27'	2"		Maple
46+98	27'	3"		"
47+50	28'	3"		"
48+13	28'	3"		"
48+30	28'	2"		"

Sta. 54+14.65
 $\Delta = 0^\circ - 27' L$

Parcel No. 7
J.H. Sampson
Gibsonburg, O. R.F.D. #3

Parcel No. 6
Chester Foth

Parcel No. 8
J.H. Sampson
Gibsonburg, O. R.F.D. #3

Chester Foth
Road
P/L 54+14.65
54+32 J.H. Sampson

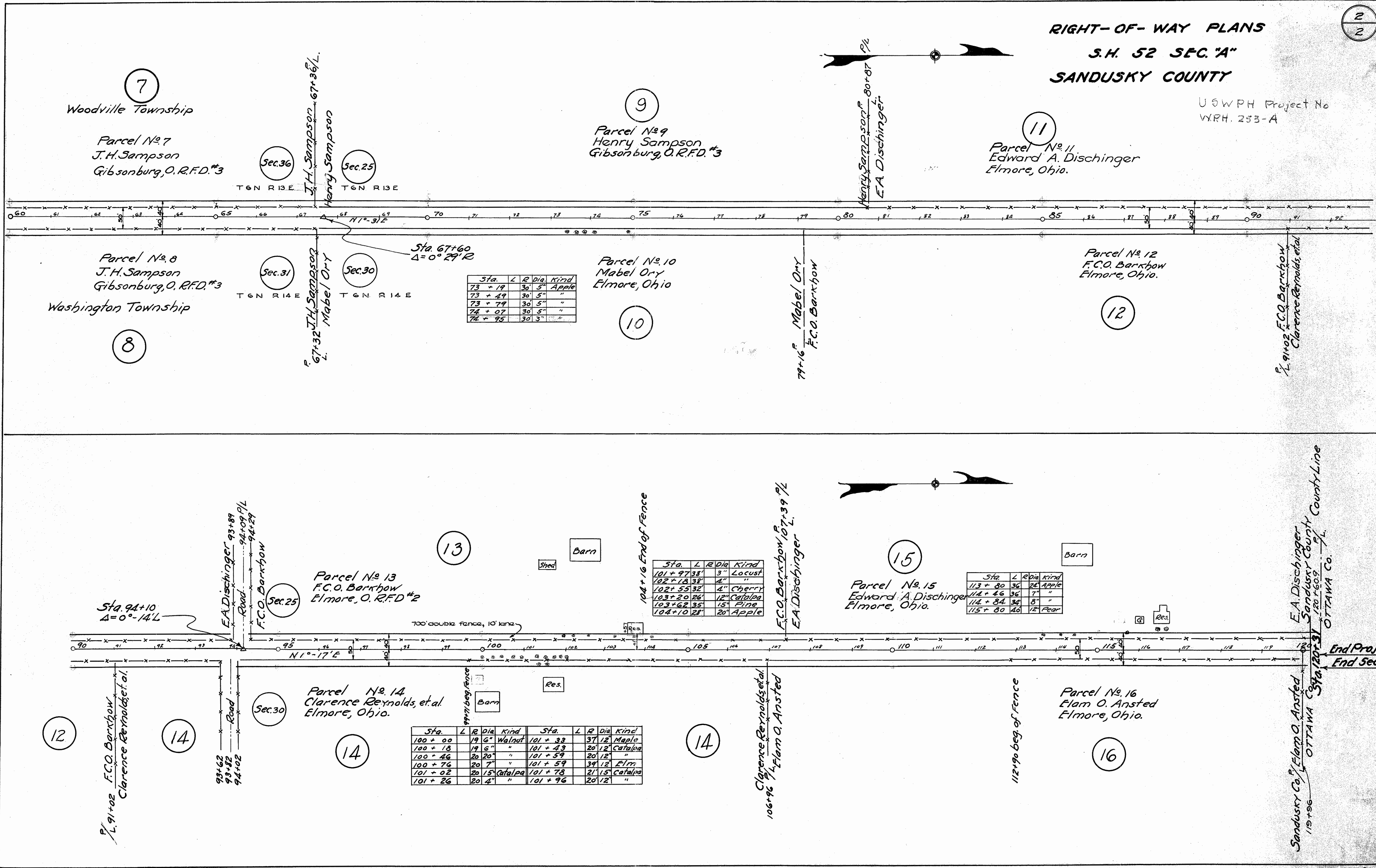
Scanned July 1997

R50251 #1 F-4

Scanned July 1997

RIGHT-OF-WAY PLANS
S.H. 52 SEC. "A"
SANDUSKY COUNTY

USWPH Project No
VPRH. 253-A



Sta.	L	R	Dia.	Kind
73 + 19		30	5"	Apple
73 + 49		30	5"	"
73 + 79		30	5"	"
74 + 07		30	5"	"
74 + 95		30	3"	"

Sta.	L	R	Dia.	Kind
101 + 97.38		3	"	Locust
102 + 18.38		4	"	"
102 + 55.32		4	"	Cherry
103 + 20.26		12	"	Catalpa
103 + 62.35		15	"	Pine
104 + 10.28		20	"	Apple

Sta.	L	R	Dia.	Kind
113 + 80		36	24	Apple
114 + 46		36	7	"
114 + 84		36	8	"
115 + 80		40	12	Pear

Sta.	L	R	Dia.	Kind	Sta.	L	R	Dia.	Kind
100 + 00		19	6"	Walnut	101 + 33		37	12"	Maple
100 + 13		19	6"	"	101 + 43		20	12"	Catalpa
100 + 46		20	20"	"	101 + 59		20	12"	"
100 + 76		20	7"	"	101 + 59		39	12"	Elm
101 + 02		20	15"	Catalpa	101 + 78		21	15"	Catalpa
101 + 26		20	4"	"	101 + 96		20	12"	"

End Project
End Sec. A