

FED. RD. DIV. NO.	STATE	PROJECT	FISCAL YEAR
2	OHIO		1946

SANDUSKY COUNTY  
 S.H.52 SECTION "A"(PT.)  
 OTTAWA COUNTY  
 S.H.52 SECTION "L" & "ELMORE"(PT.)

# STATE OF OHIO

## DEPARTMENT OF HIGHWAYS

# TOLEDO-ELMORE ROAD

## S.H.52 SECTIONS A(PT.), L, ELMORE(PT.)

# SANDUSKY & OTTAWA COUNTIES

## WASHINGTON, WOODVILLE & HARRIS TOWNSHIPS.

# VILLAGE OF ELMORE

### CONVENTIONAL SIGNS.

STATE LINE	-----
COUNTY LINE	-----
TOWNSHIP LINE	-----
SECTION LINE	-----
CENTER LINE	-----
PROPERTY LINE	-----
CITY OR VILLAGE LINE	-----
FENCE LINE	-x-x-x-x-
STEAM RAILROAD	====
ELECTRIC RAILROAD	++++
POLE LINE	o-o-o-o
GUARD RAIL	o-o-o-o
DRAIN PIPE, NEW	-----
DRAIN PIPE, OLD	-----

### INDEX OF SHEETS.

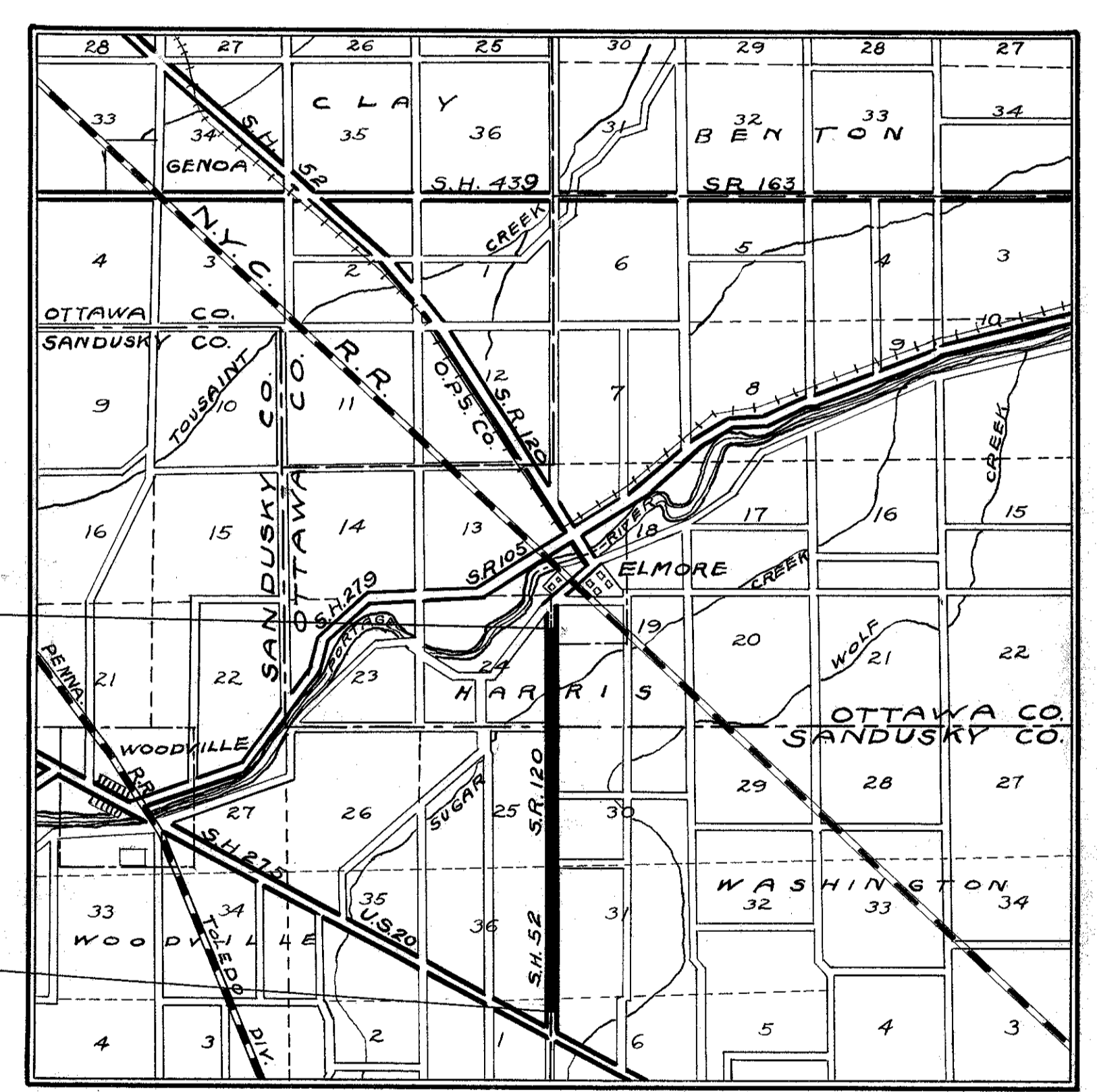
TITLE SHEET	1
TYPICAL SECTION	2
GENERAL NOTES	3
PAVEMENT COMPUTATIONS	3
SUMMARIES	3
PLAN & PROFILE	4-9

### LINE DATA

Begin Project - Sta. 3+50  
 End Work in Sandusky County - Sta. 120+31 = 0+00 (Ottawa County)  
 Net Length-Work in Sandusky County = 11681 Lin.Ft.  
 Equation:- Ottawa County - Sta. 0+00 = Sta. 120+31 (Sandusky Co.)  
 Corporation Line of Elmore Ohio - Sta. 39 + 45.6 (Ottawa County)  
 Net Length of Work in Ottawa County (Rural) = 3945.6 Lin.Ft.  
 Total Net Length (Rural) = 15626.6 Lin.Ft. or 2.959 Miles.  
 End Project and Section "Elmore(PT.)" - Sta. 46+80.  
 Net Length of Work Section "Elmore(PT.)" = 734.4 Lin.Ft. or 1.39 Miles.  
 Net Length of Project = 16361 Lin.Ft. or 3.098 Miles.

End Project  
Sta. 46+80

Begin Project  
Sta. 3+50



**LOCATION PLAN.**

SCALE: 1" = 1 MILE

DELIVERY POINT - ELMORE      AVERAGE HAUL - 2 MILES

PORTION TO BE IMPROVED      **=====**  
 STATE HIGHWAYS                      **=====**  
 OTHER HIGHWAYS                      **=====**

### SCALES

PLAN                                      1" = 100'  
 PROFILE - HORIZONTAL              1" = 100'  
 PROFILE - VERTICAL                  1" = 10'

The Standard Specifications of The State of Ohio, Department of Highways, including changes and Supplemental Specifications listed in the Proposal shall govern this improvement.

I hereby approve these plans and declare that the making of this improvement will not require the closing to traffic of the highway and that traffic will be maintained as shown on the plans and estimates.

The Right-of-Way necessary for this improvement will be provided by the State of Ohio.

Approved Paul W. Fitch  
 Date 3/16/46 Resident Division Deputy Director.

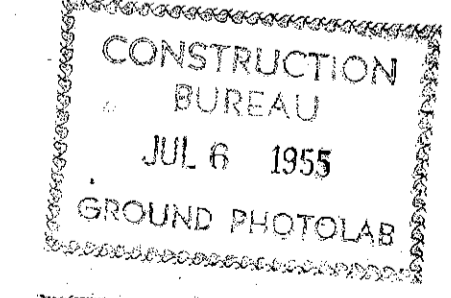
Approved \_\_\_\_\_  
 Date \_\_\_\_\_ Chief Engineer, Bureau of Maintenance.

Approved \_\_\_\_\_  
 Date \_\_\_\_\_ Chief Engineer, Bureau of Bridges & R.R. Crossings.

Approved Paul Fitch  
 Date 3/16/46 Chief Engineer, Bureau of Location & Design.

Approved Edwin W. Ellis  
 Date 7-18-46 First Asst. Director & Chief Engineer.

Approved P. W. T. Fitch  
 Date 7-18-46 Director of Highways.



STANDARD DRAWINGS.	
G-707	Date: 6-1-42

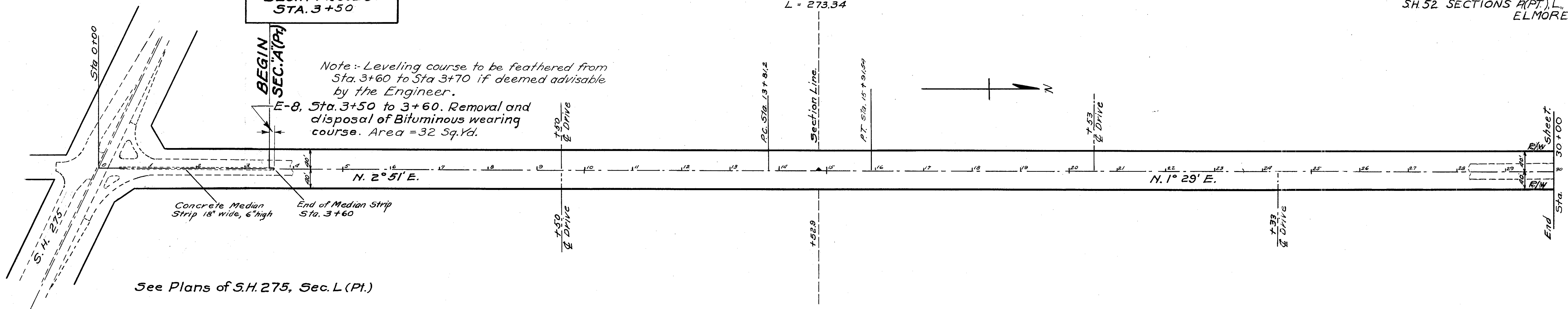
SUPPLEMENTAL SPECIFICATIONS.	
5-203	Date: 4-6-45

FILE No.	SANDUSKY & OTTAWA COS, S.H.52 SECS. A(PT.), L, ELMORE (PT.)
DATE OF LETTING	1946
CONTRACT NO.	

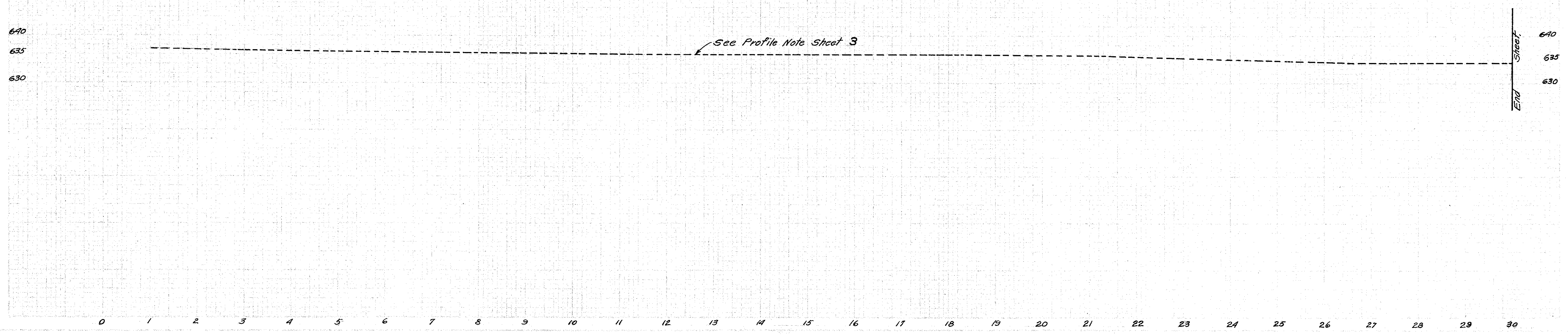
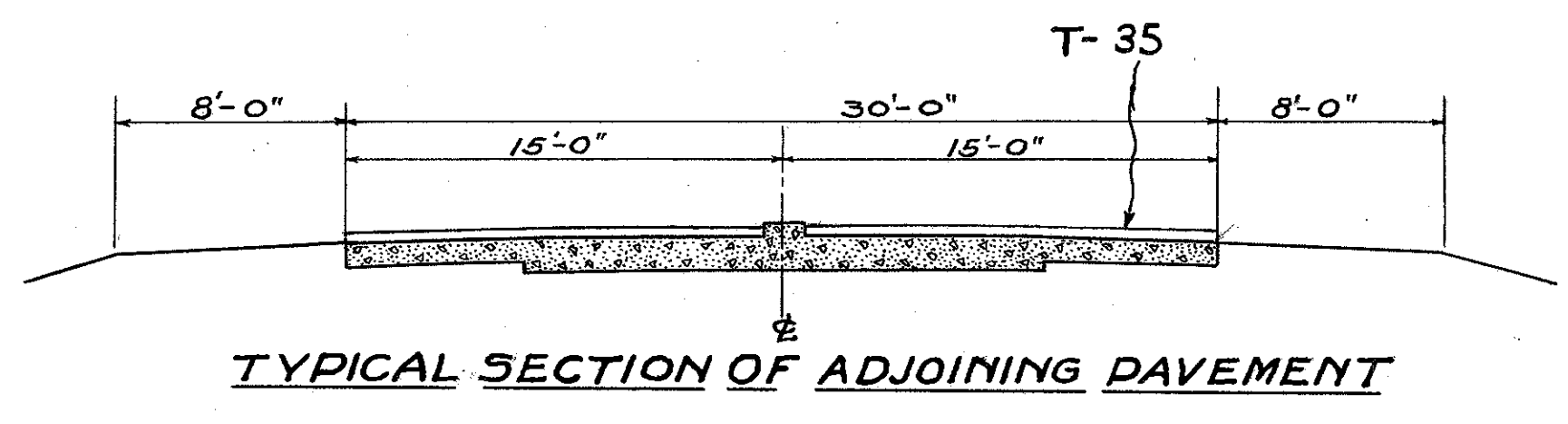
Sta. 14+52.9  
 $\Delta = 1^\circ 22'$  left.  
 $D = 0^\circ 30'$   
 $T = 134.70'$   
 $L = 273.34'$

BEGIN PROJECT  
STA. 3+50

Note: - Leveling course to be feathered from  
Sta. 3+60 to Sta. 3+70 if deemed advisable  
by the Engineer.  
E-8, Sta. 3+50 to 3+60. Removal and  
disposal of Bituminous wearing  
course. Area = 32 Sq.Yd.



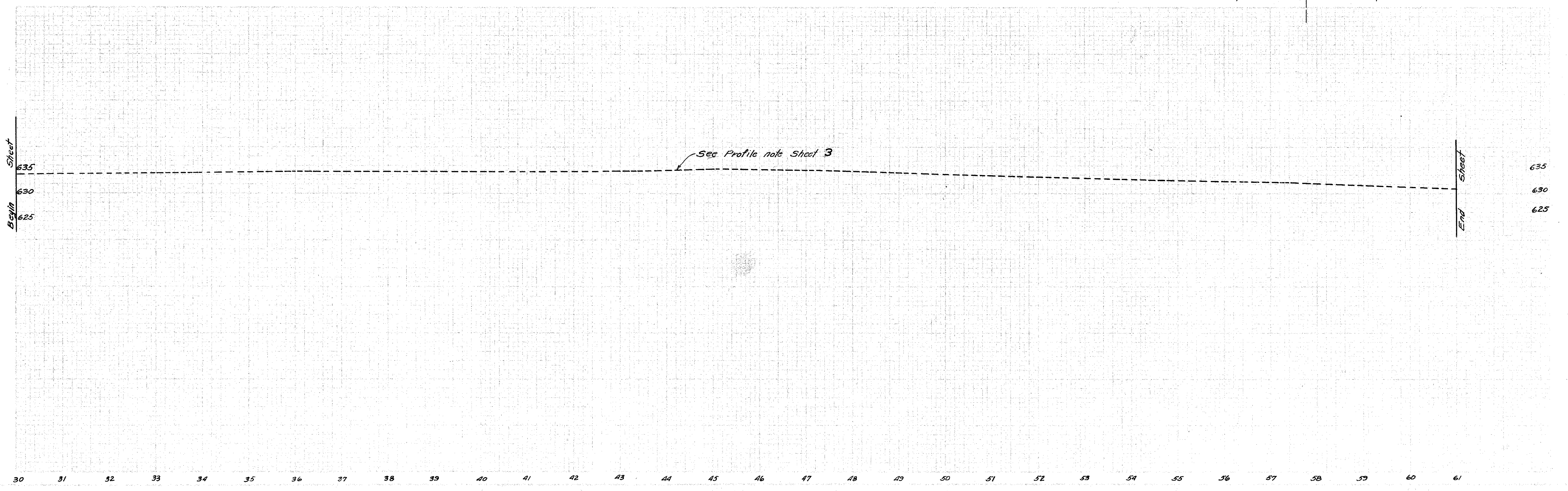
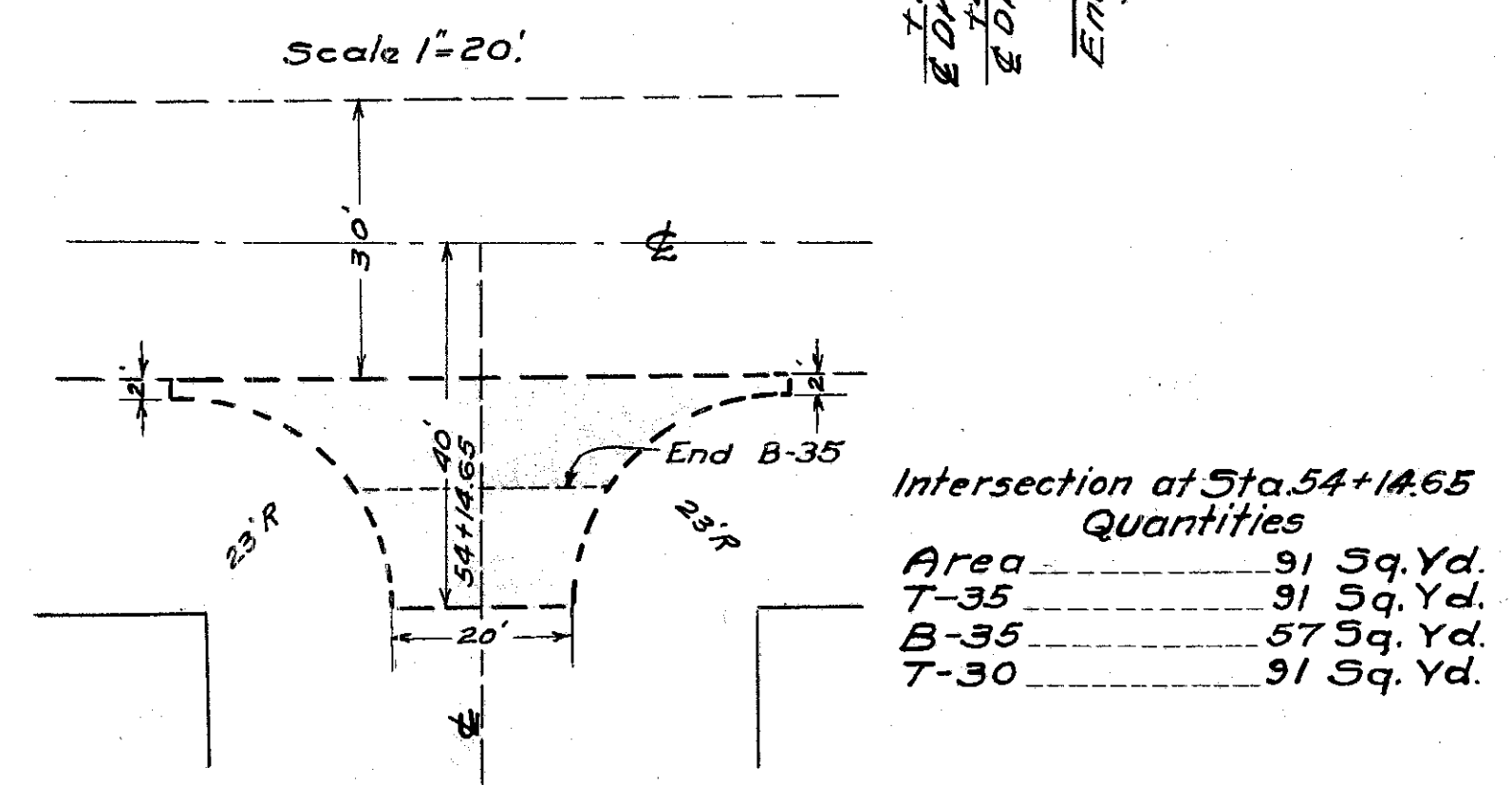
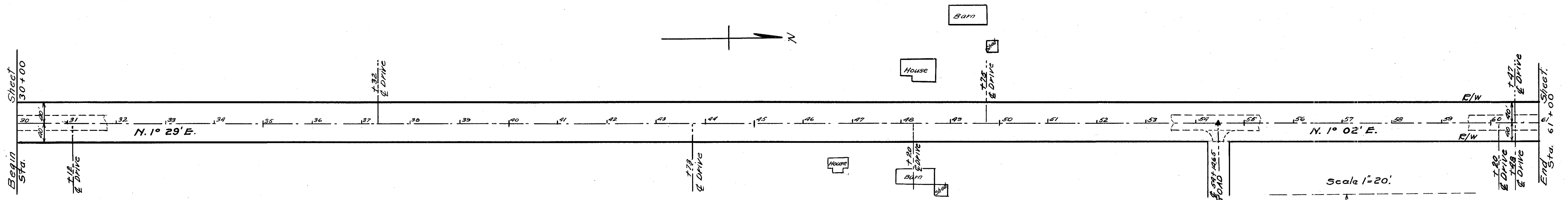
See Plans of S.H. 275, Sec. L (Pt.)





DIV 2 OHIO 1946 5  
 SANDUSKY & OTTAWA 9  
 COUNTIES  
 SH. 52 SECTIONS A(PT.), L  
 ELMORE (PT.)

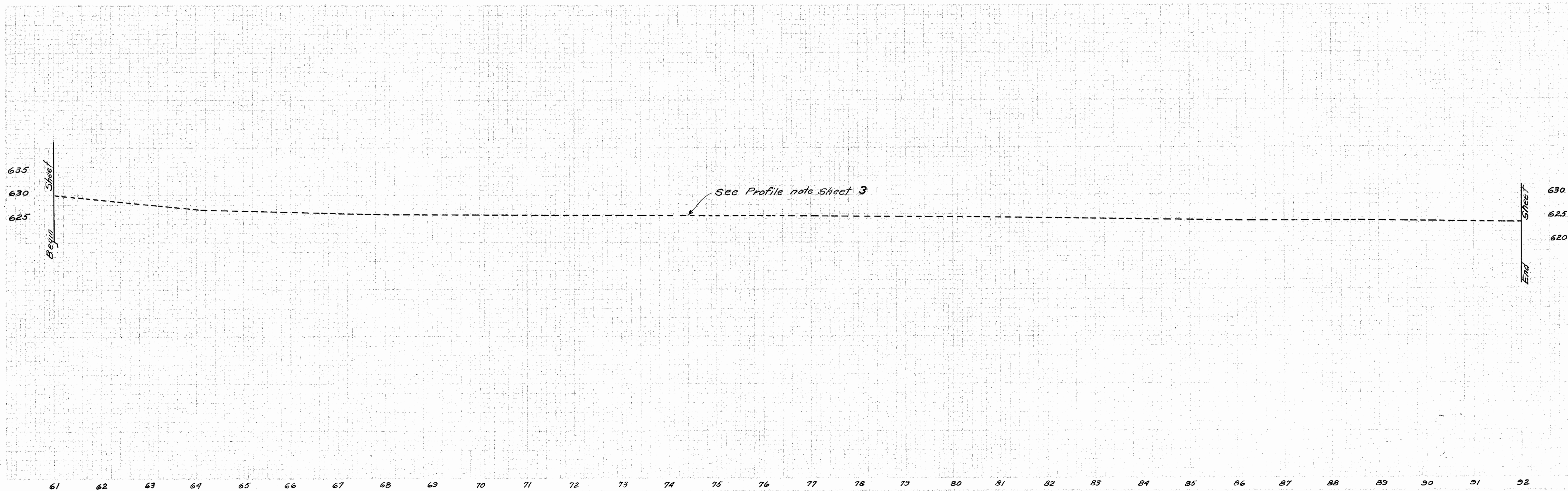
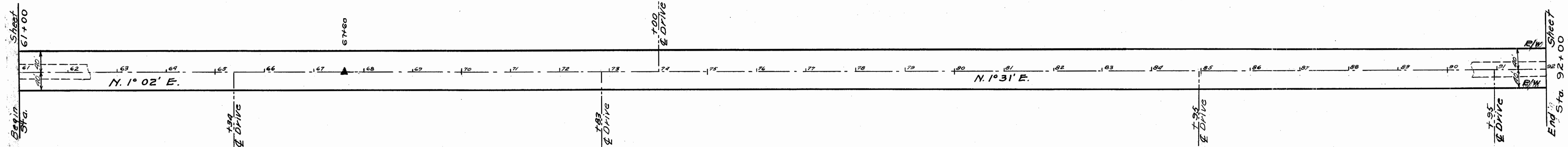
Sta. 54+14.65  
 $\Delta = 0^\circ 27' \text{ left}$



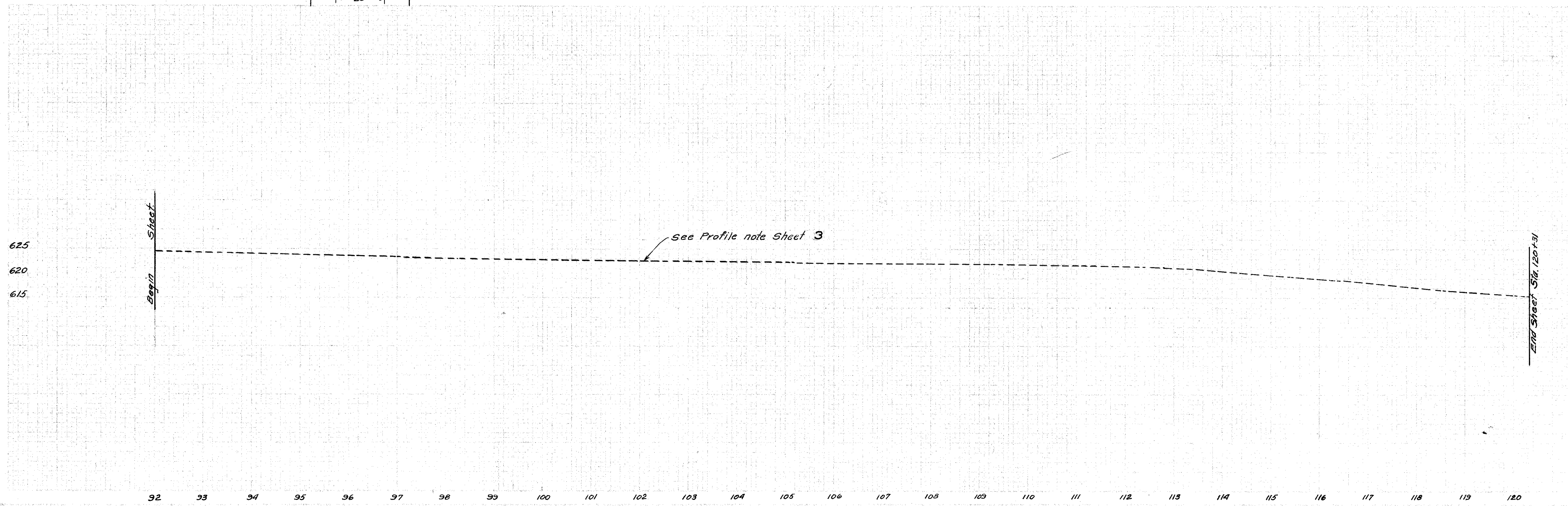
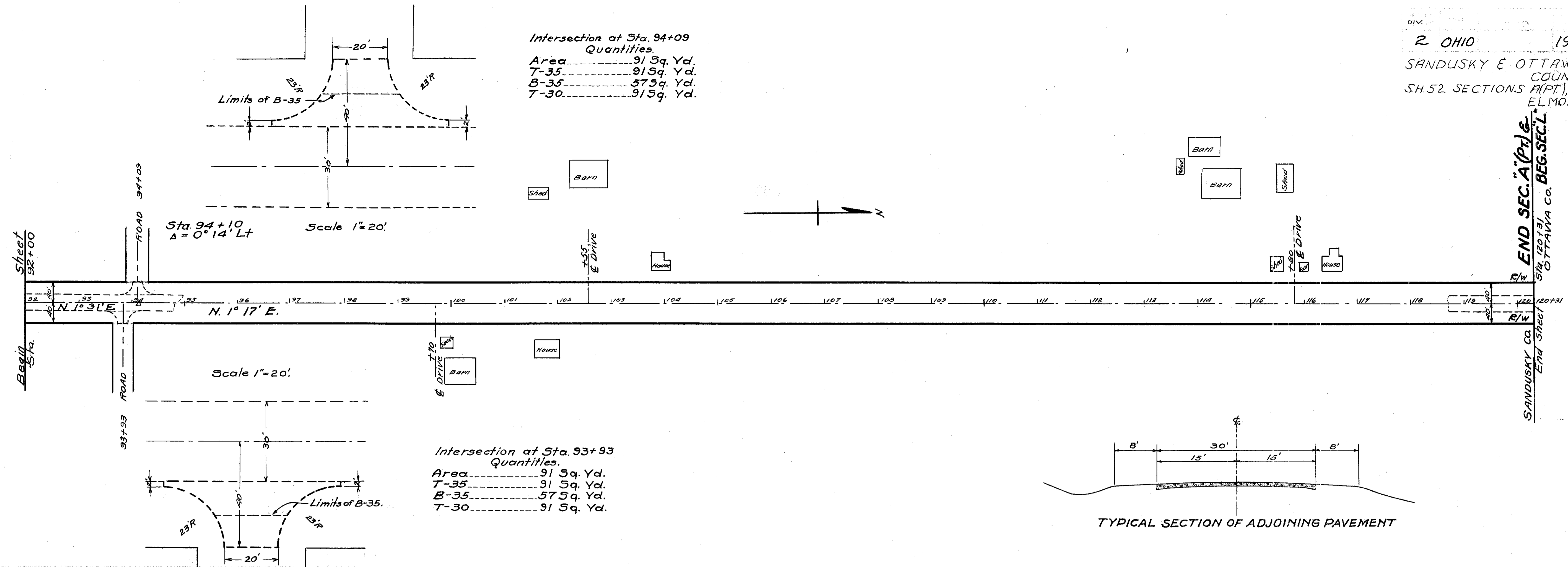
DIV	2 OHIO	1946	69
-----	--------	------	----

SANDUSKY & OTTAWA  
COUNTIES  
SH. 52 SECTIONS A(PT), L,  
ELMORE (PT)

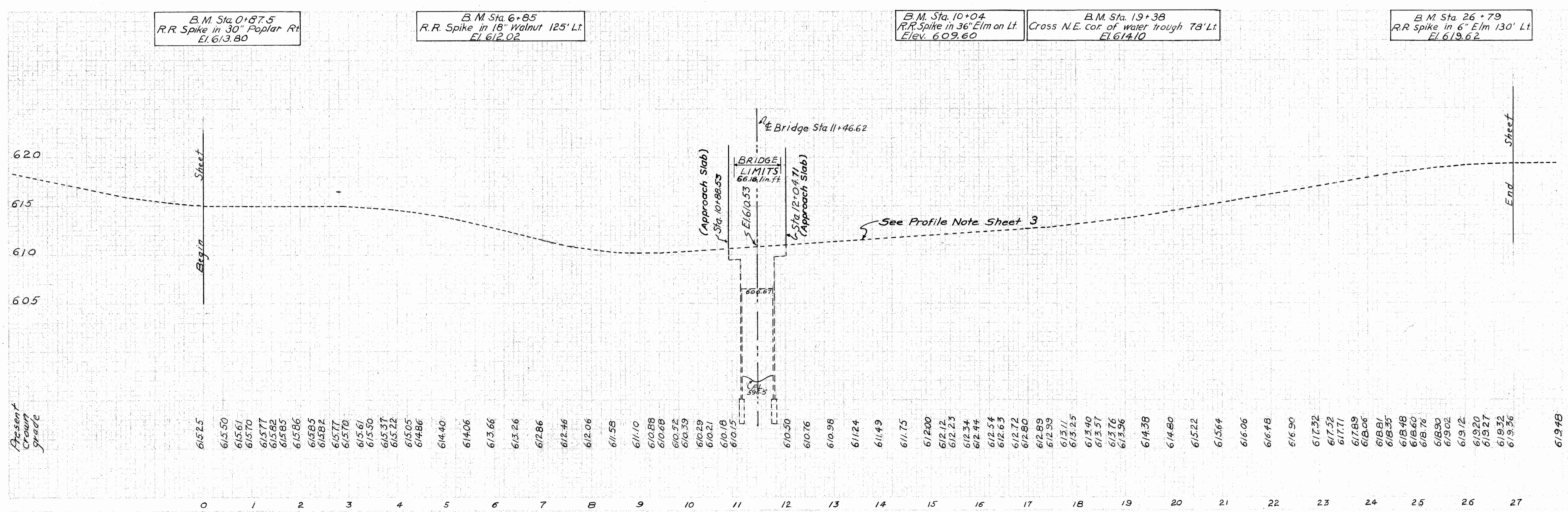
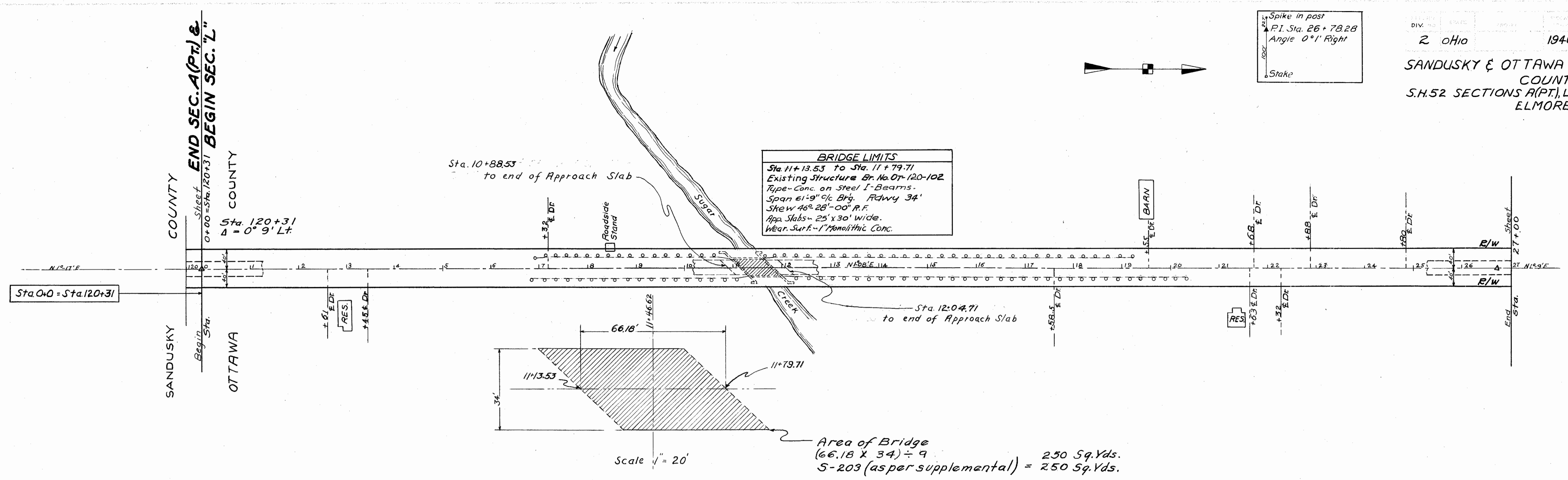
Sta. 67+60  
 $\Delta = 0^\circ 29' R.$





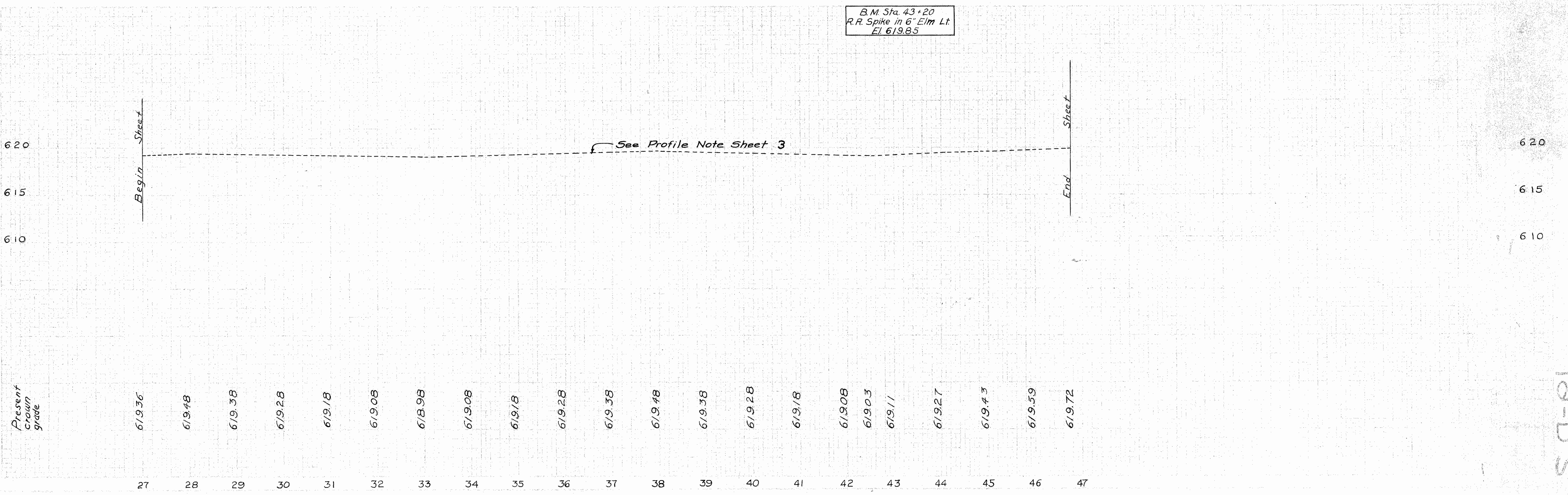
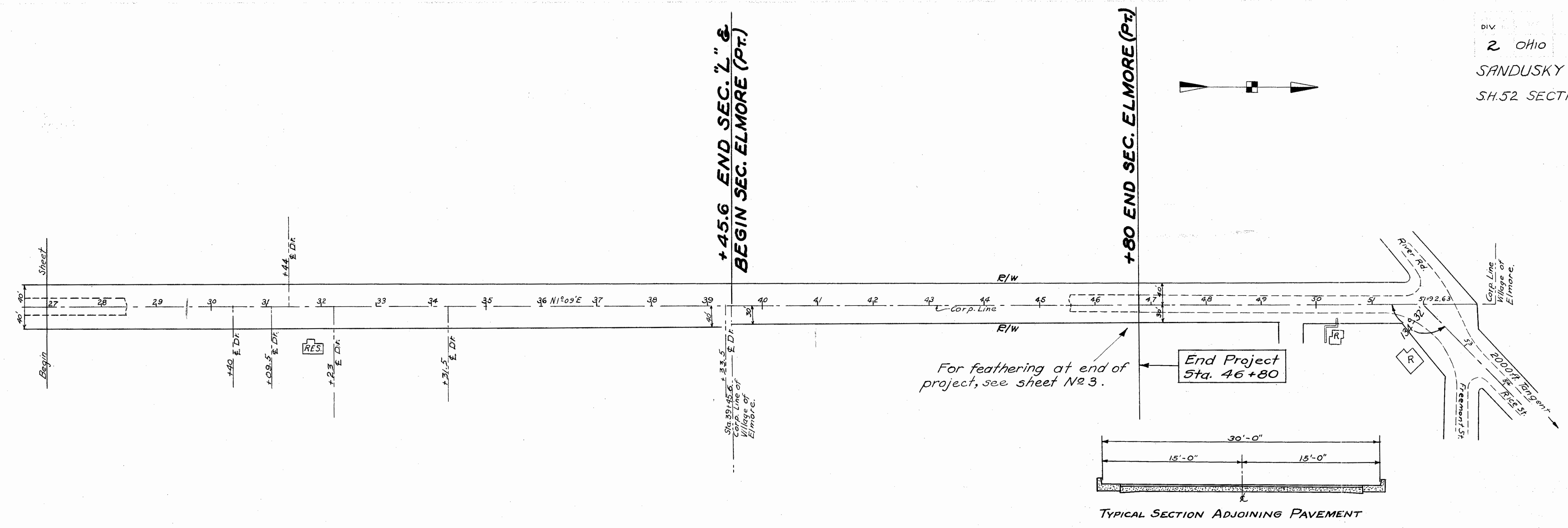








DIV 2 Ohio 1946 99  
 SANDUSKY & OTTAWA COUNTIES  
 SH.52 SECTIONS A(PT), L, ELMORE (PT.)



S.D. 101-101-TO MAP