

O.D.O.T. DISTRICT 2 SURVEY OFFICE (USE ONLY)

PERSONNEL

REFERENCE NO. 3

SHEET 3 OF 6

NOTES ROUSOS

DATE 5/10/00

ROUTE SR 51

H.C. HUSS

WEATHER CLOUDY

COUNTY SANDUSKY

R.C. VAN DUSEN

TEMP. 50°

TOWNSHIP WOODVILLE

SECTION 36

DWG BY NIESE PID \_\_\_\_\_

T 6 N R 13 E

TYPE MONUMENT P.K. NAIL

ON SURFACE - ~~BELOW~~ ON

OFFSET ☉ PAVEMENT ON LT : RT

- TO - EDGE PAVEMENT

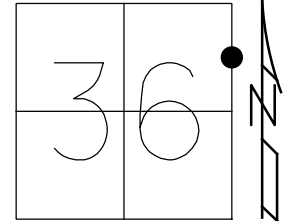
STATION: 54+14.65

HORIZ.DATUM: \_\_\_\_\_

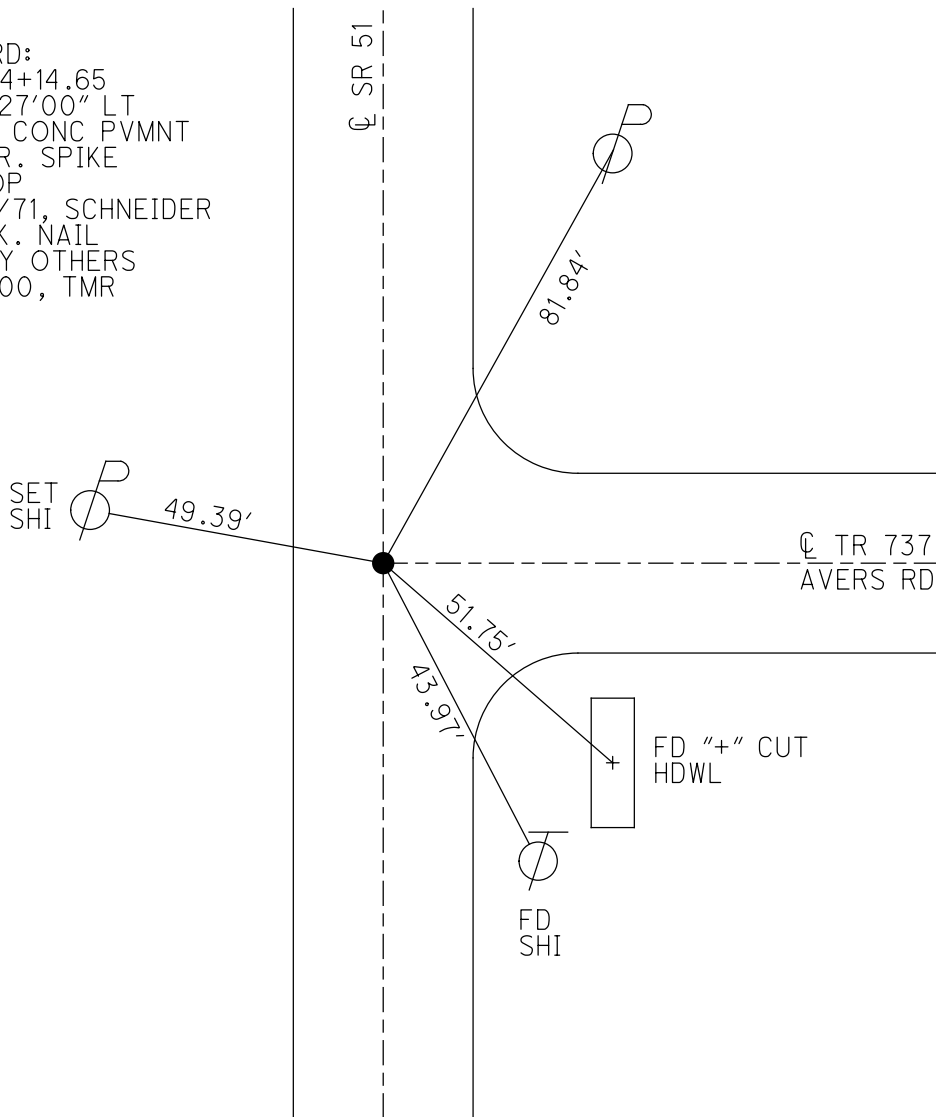
GEOID: \_\_\_\_\_

GRID: NORTHING: \_\_\_\_\_

EASTING: \_\_\_\_\_



RECORD:  
 STA 54+14.65  
 $\Delta = 0^{\circ}27'00''$  LT  
 "+" IN CONC PVMNT  
 SM.R.R. SPIKE  
 ON TOP  
 12/29/71, SCHNEIDER  
 FD P.K. NAIL  
 SET BY OTHERS  
 5/10/00, TMR



# O.D.O.T. DISTRICT 2 SURVEY OFFICE

PERSONNEL \_\_\_\_\_

REFERENCE NO. 3

SHEET \_\_\_\_\_ OF \_\_\_\_\_

NOTES Rousar

H.C. Hess

R.C. VAN DUSEN

DATE 5-10-00

WEATHER Cloudy

TEMP. 50°F

ROUTE 51

COUNTY Sandusky

TOWNSHIP WOODVILLE WASHINGTON

SECTION 36/31

T 15 N R 13 E  
14 E

36	31
----	----



TYPE MONUMENT PK NAIL

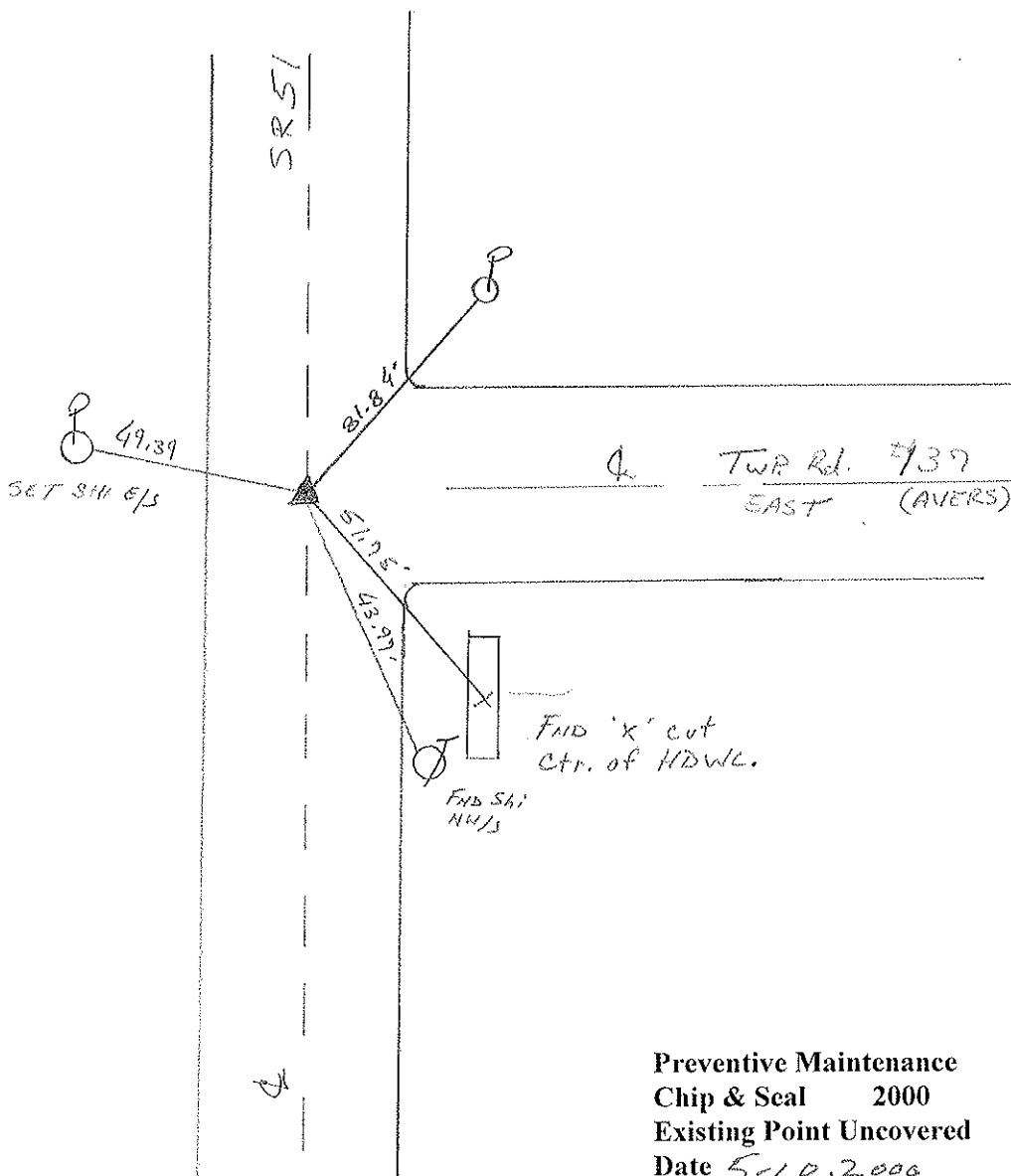
ON SURFACE - ~~BELOW~~ Surface

~~LEFT - & PAV'T. - RIGHT~~

TO EDGE PAVEMENT

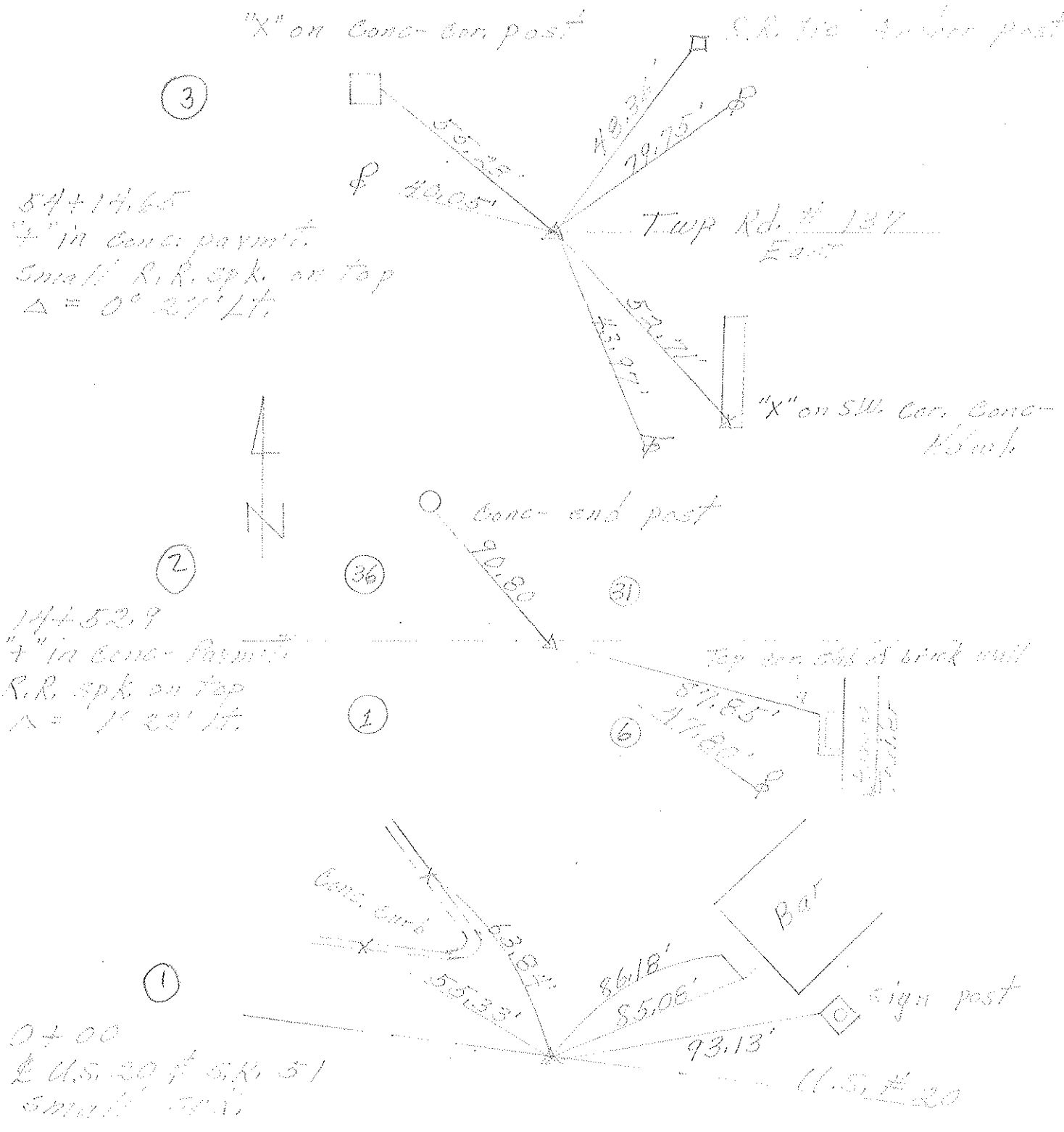
S.L.M. 1.03

Sta. 54+14.65  
+ in conc. pvmnt.  
Small R.R. spk. on top  
Fwd PK Nail set by others  
 $\Delta = 0^\circ 29' \text{ Lt.}$



Preventive Maintenance  
Chip & Seal 2000  
Existing Point Uncovered  
Date 5-10-2000

PERSONNEL	TITLE	PERSONNEL	TITLE	COUNTY	DATE
Schneider				Sandusky	12-29-71
Masser				S. R. 51	WEATHER Fair
Barbarr				SEC. 1, 36 & 5, 31	TEMP. 30°
Seymour					
DESCRIPTION	Wardville & Washington Twp's.			JOB NO.	
	LEFT	CENTER LINE	RIGHT		



PERSONNEL	TITLE	PERSONNEL	TITLE	COUNTY	DATE
<u>Schneider</u>		<u>Patt's</u>		<u>Sandusky</u>	<u>Feb. 16</u>
<u>Masser</u>				S. R. <u>51</u>	WEATHER
<u>Barbour</u>				SEC. <u>U.S. #20 to Co. Line</u>	TEMP.
<u>Redding</u>					

DESCRIPTION Ties for Center Points JOB NO. \_\_\_\_\_

LEFT CENTER LINE RIGHT

