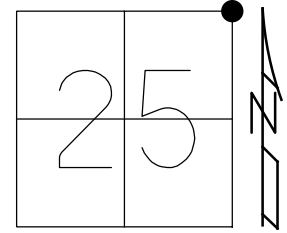


O.D.O.T. DISTRICT 2 SURVEY OFFICE (USE ONLY)

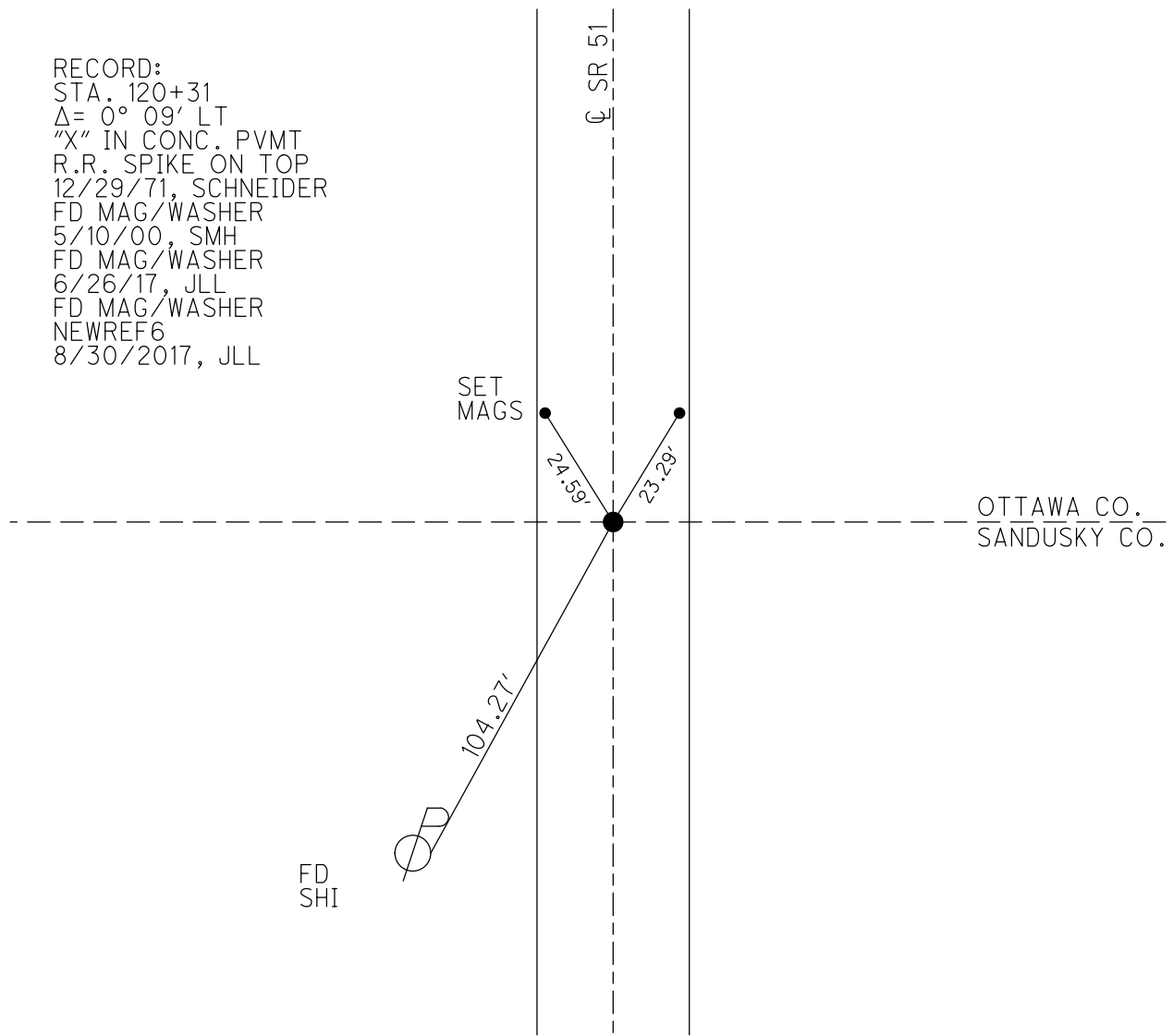
PERSONNEL _____ REFERENCE NO. 6 SHEET 6 OF 6
 NOTES POORE DATE 6/26/17 ROUTE SR 51
 H.C. LEU WEATHER SUNNY COUNTY SANDUSKY
 R.C. CARSON TEMP. 72° TOWNSHIP WOODVILLE
 HOMAN SECTION 25
 DWG BY NIESE PID _____ T 6 N R 13 E

TYPE MONUMENT MAG NAIL/WASHER
 ON SURFACE - ~~BELOW~~ ON
 OFFSET \varnothing PAVEMENT ON LT : RT
17.0' TO RT EDGE PAVEMENT
 STATION: 120+38.4

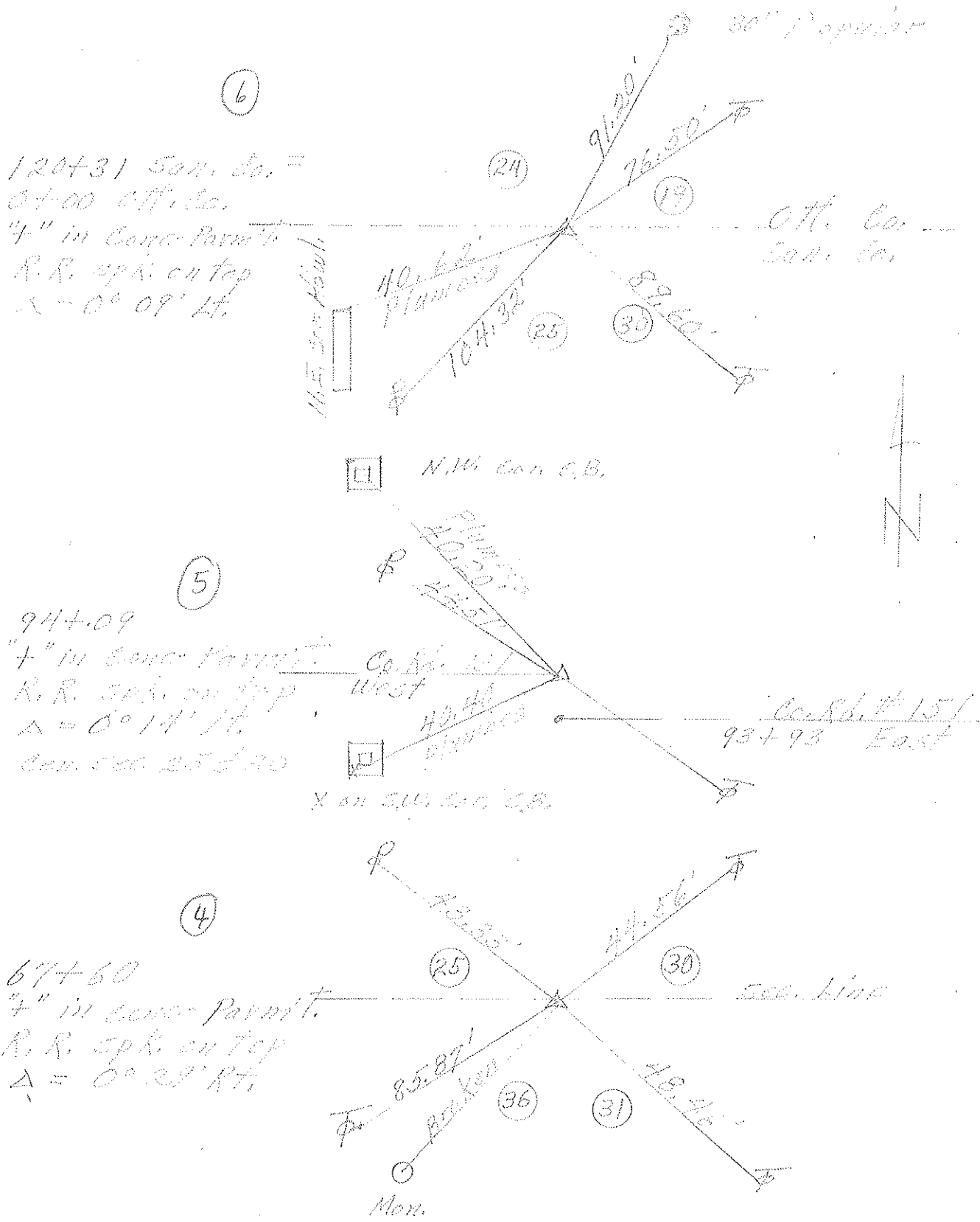


HORIZ.DATUM: NAD83 2011 GEOID: NAVD88 2012A
 GRID: NORTHING: 653552.341 EASTING: 1749345.865

RECORD:
 STA. 120+31
 $\Delta = 0^\circ 09' \text{ LT}$
 "X" IN CONC. PVMT
 R.R. SPIKE ON TOP
 12/29/71, SCHNEIDER
 FD MAG/WASHER
 5/10/00, SMH
 FD MAG/WASHER
 6/26/17, JLL
 FD MAG/WASHER
 NEWREF6
 8/30/2017, JLL



PERSONNEL	TITLE	PERSONNEL	TITLE	COUNTY	DATE
<u>Schneider</u>				<u>Sandusky</u>	<u>12-29-71</u>
<u>Mosser</u>				S. R. <u>51</u>	WEATHER <u>Fair</u>
<u>Barbour</u>				SEC. <u>2.5 & 30</u>	TEMP. <u>30°</u>
<u>Coyman</u>				DESCRIPTION <u>Woodbridge of Washington Twp's</u>	JOB NO. _____
	LEFT	CENTER LINE	RIGHT		



PERSONNEL	TITLE	PERSONNEL	TITLE	COUNTY	DATE
Schneider		Potts		Sandusky	Feb. 1968
Masser				S. R. # 51	WEATHER
Barbour				SEC. U.S. # 20 to Co. L	TEMP.
Redding					
DESCRIPTION	Ties for Control Points				JOB NO.

