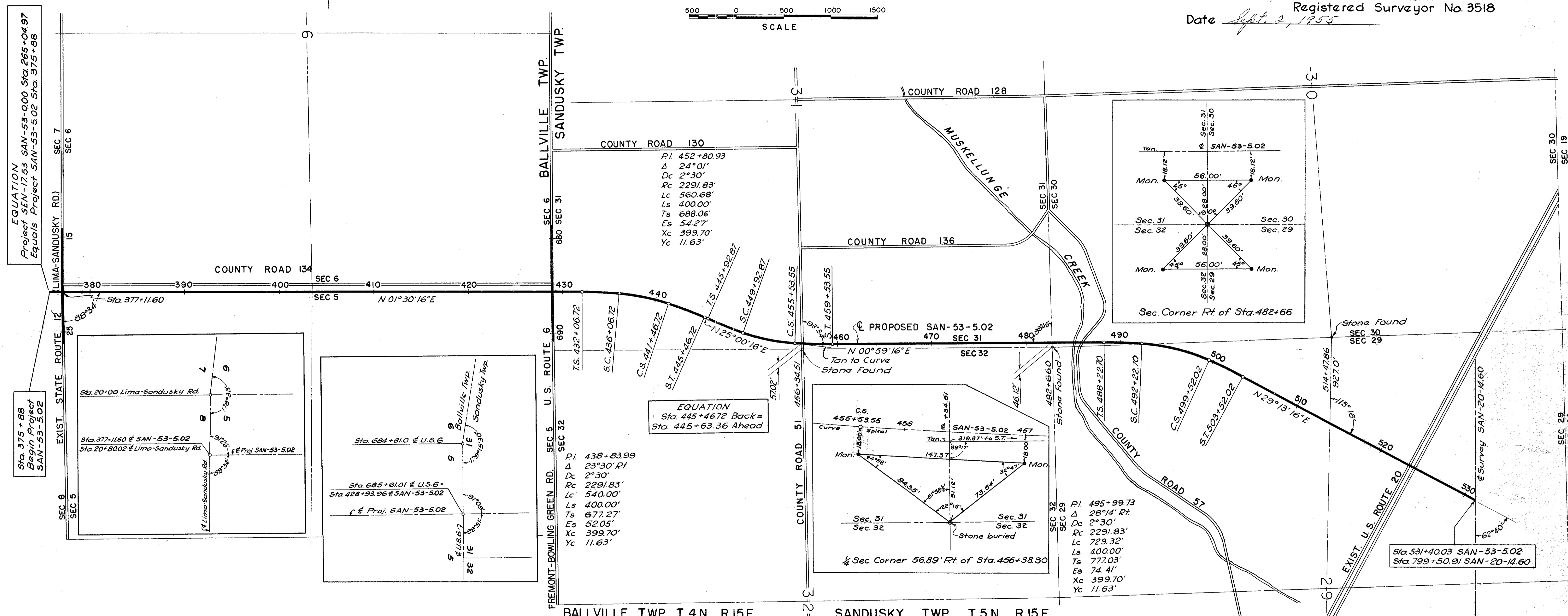
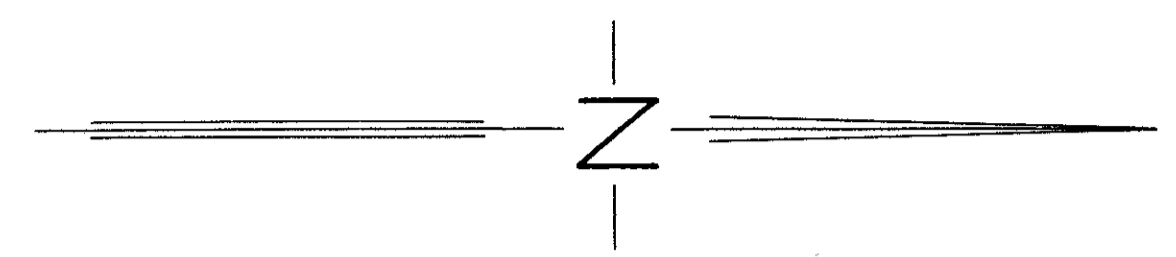


Scanned July 1947

# LOCATION PLAN STATE ROUTE 53 BYPASS SAN-53-5.02 SANDUSKY COUNTY

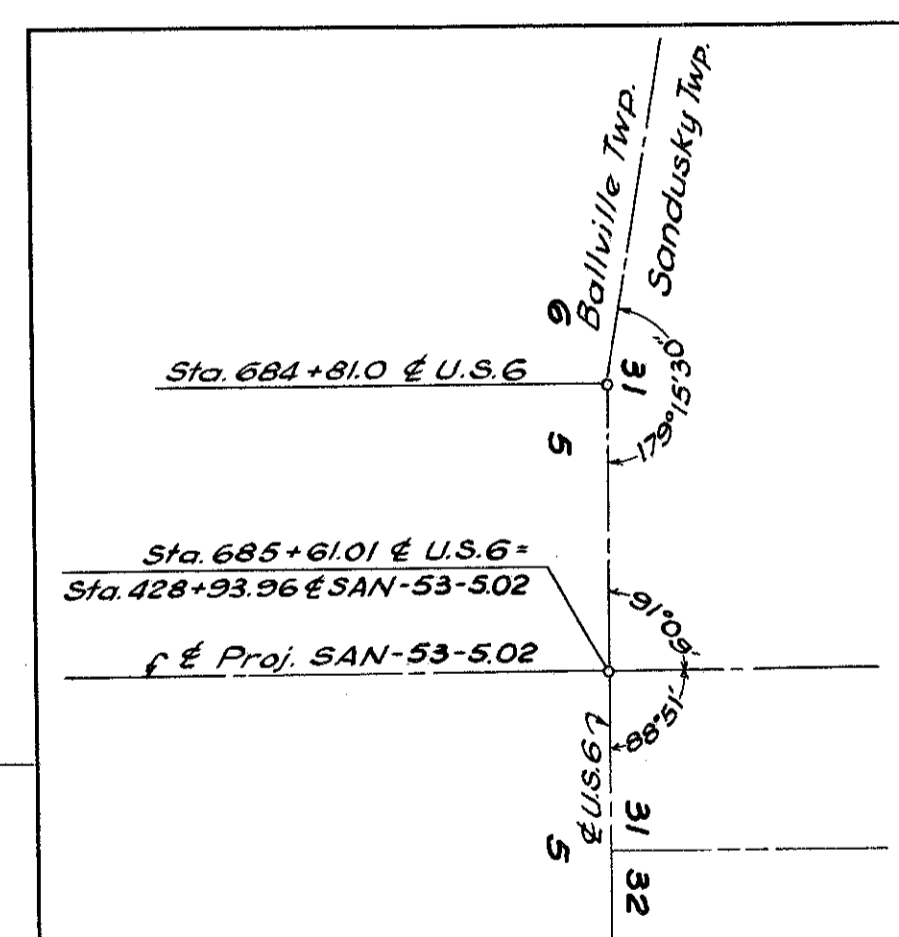
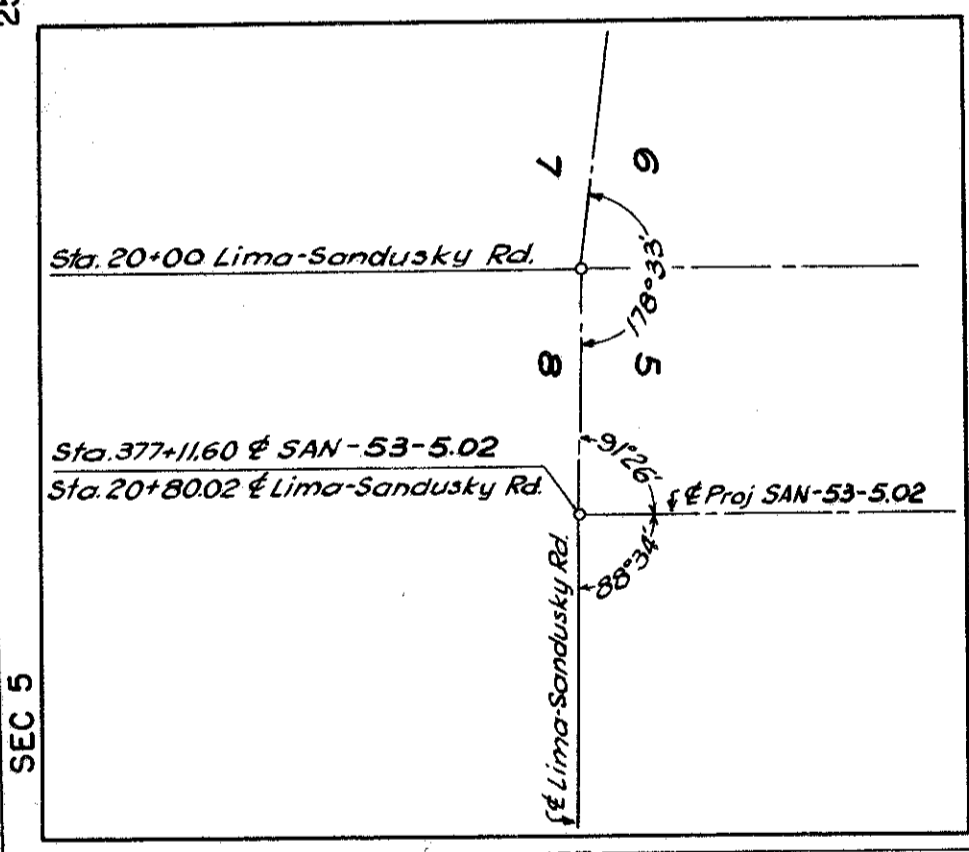
Received 4-9-56 at 11:28 AM  
Recorded 4-9-56  
Plat Book 9 Page 54  
Signed \_\_\_\_\_ Recorder Sandusky County, Ohio  
Fee 7.25

Signed Rexford C. Rath  
Rexford C. Rath  
Registered Surveyor No. 3518  
Date Sept. 2, 1955



EQUATION  
Project SAN-17-53 SAN-53-0.00 Sta. 265+04.97  
Equals Project SAN-53-5.02 Sta. 375+88

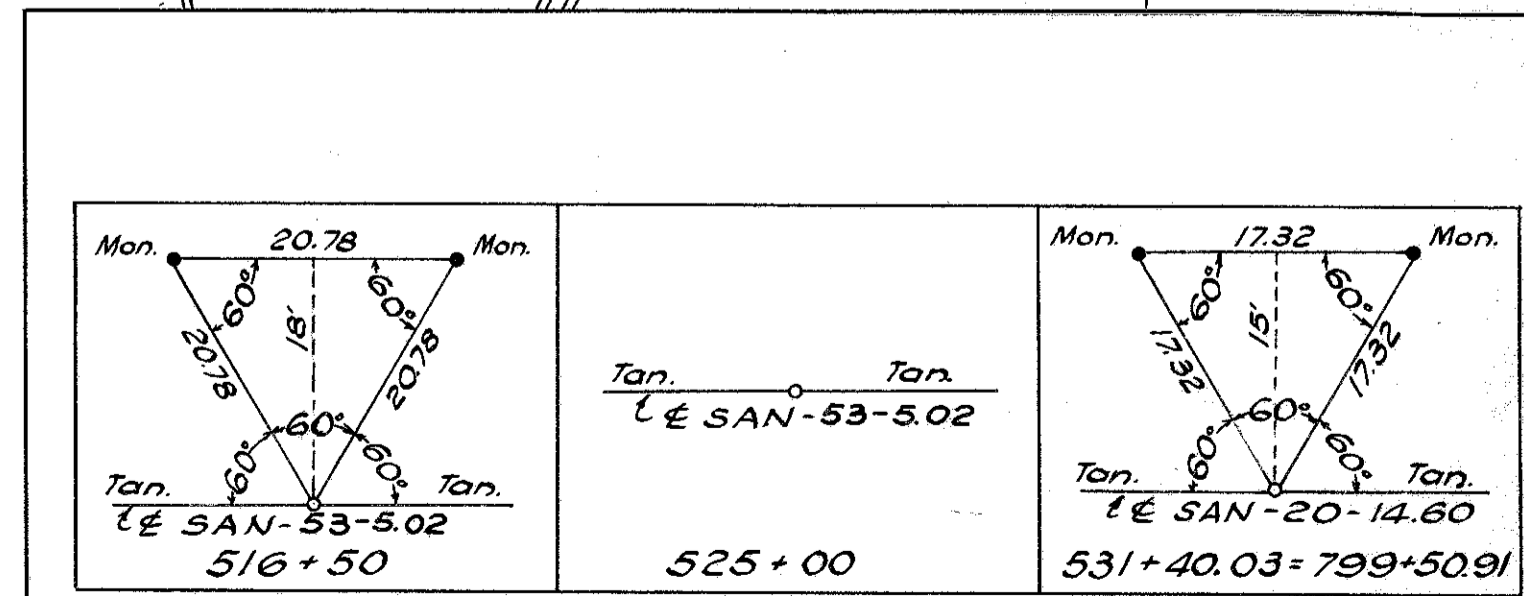
Sta. 375+88  
Begin Project  
SAN-53-5.02



EQUATION  
Sta. 445+46.72 Back =  
Sta. 445+63.36 Ahead

BALLVILLE TWP, T.4N, R.15E SANDUSKY TWP, T.5N, R.15E  
CENTER LINE REFERENCE MONUMENTS WILL BE SET AFTER CONSTRUCTION

Sta. 377+11.60	Sta. 385+00	Sta. 394+00	Sta. 403+00	Sta. 412+00	Sta. 421+00	Sta. 428+93.96	T.S. Sta. 432+06.72	Curve Sta. 439+00	Spiral S.T. Sta. 445+46.72
T.S. Sta. 445+92.87	Sta. 453+00	S.T. Sta. 459+53.55	Sta. 469+00	Sta. 479+00	T.S. Sta. 488+22.70	Curve Sta. 496+00	Spiral S.T. Sta. 503+52.02	Sta. 510+00	



REFERENCE MONUMENTS SET WITH PROJECT SAN-20-14.60

R-5053 #2 F-37

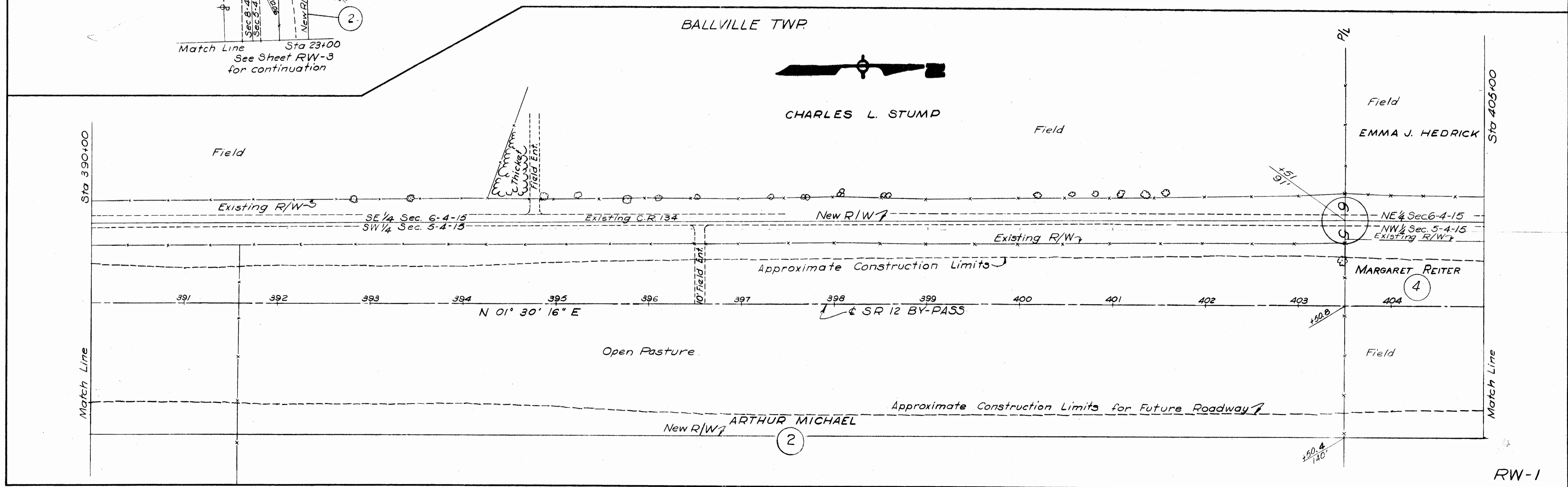
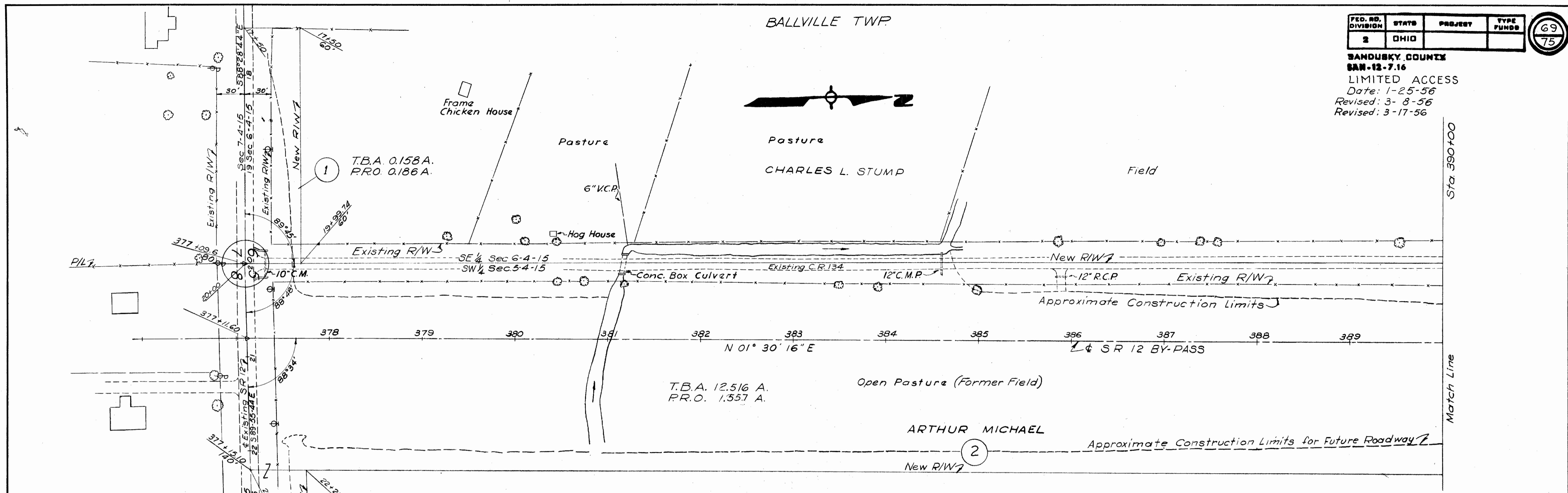
Scanned  
July 1997

USE K&E 3028 ERADICATOR

FED. RD. DIVISION	STATE	PROJECT	TYPE FUND
2	OHIO		

69  
75

**SANDUSKY COUNTY**  
**SAN-12-7.16**  
**LIMITED ACCESS**  
 Date: 1-25-56  
 Revised: 3-8-56  
 Revised: 3-17-56



RIGHT OF WAY STA. 377+11.60 TO STA. 405+00

RW-1

Scanned July 1997

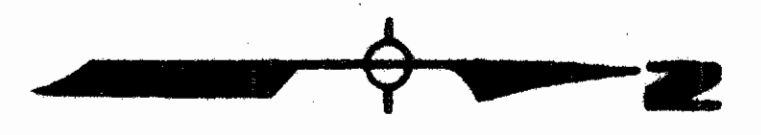
USE KQE 3028 ERADIGATOR

FED. DIST. DIVISION	STATE	PROJECT	TYPE FUNDS
2	OHIO		

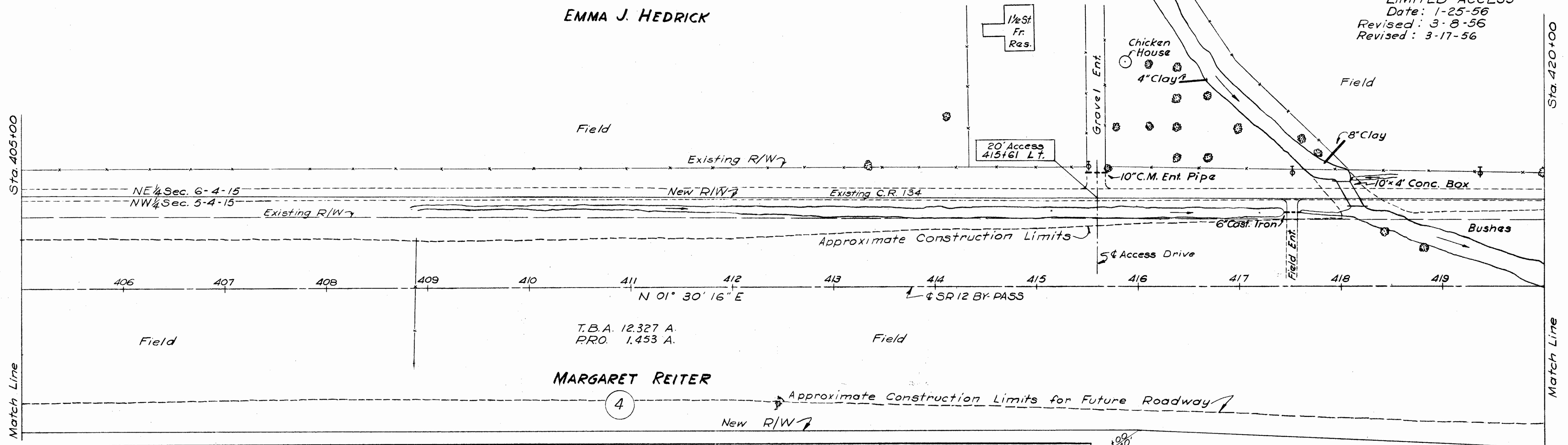
**SANDUSKY COUNTY**  
 SAN-10-7-36  
 LIMITED ACCESS  
 Date: 1-25-56  
 Revised: 3-8-56  
 Revised: 3-17-56

70  
75

BALLVILLE TWP.



EMMA J. HEDRICK



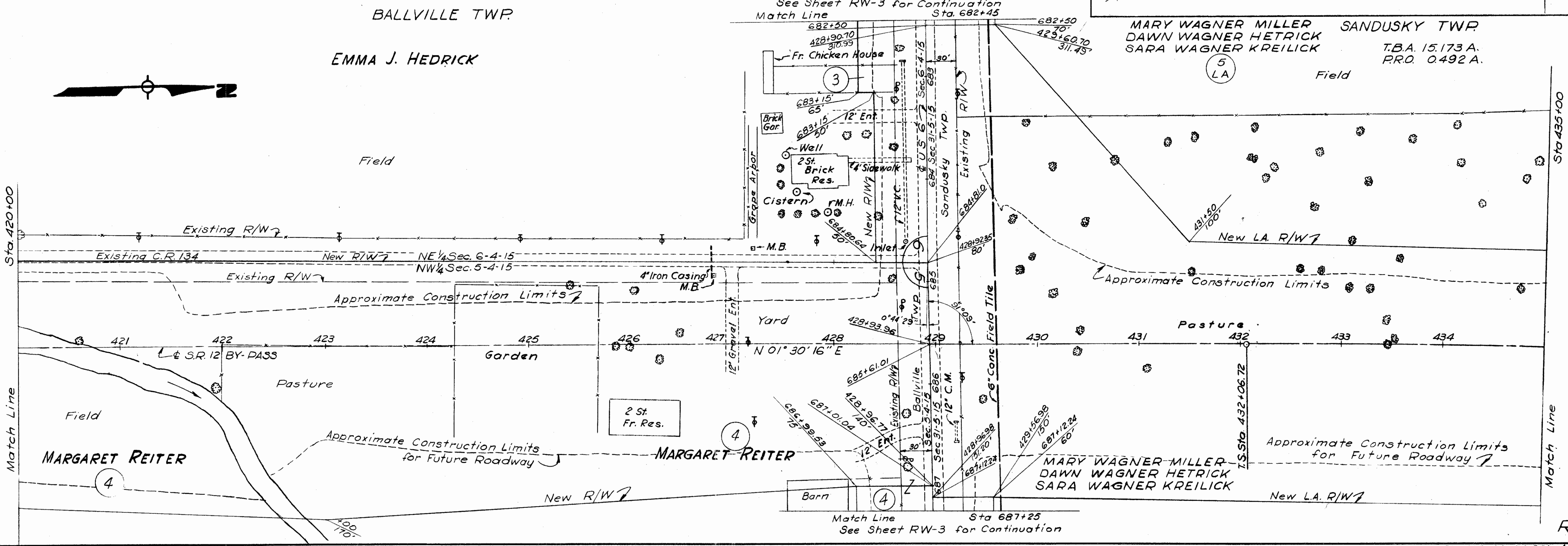
T.B.A. 12,327 A.  
P.R.O. 1,453 A.

MARGARET REITER

BALLVILLE TWP.



EMMA J. HEDRICK



MARY WAGNER MILLER SANDUSKY TWP.  
 DAWN WAGNER HETRICK T.B.A. 15,173 A.  
 SARA WAGNER KREILICK P.R.O. 0,492 A.

MARGARET REITER

MARGARET REITER

MARY WAGNER MILLER  
 DAWN WAGNER HETRICK  
 SARA WAGNER KREILICK

Match Line Sta 687+25  
 See Sheet RW-3 for Continuation

RIGHT OF WAY STA. 405+00 TO STA 435+00

RW-2

(LA) La Mer C. Kerns (Not Used)

ST. RT. 12

July 1957

USE KQE 3028 ERADICATOR

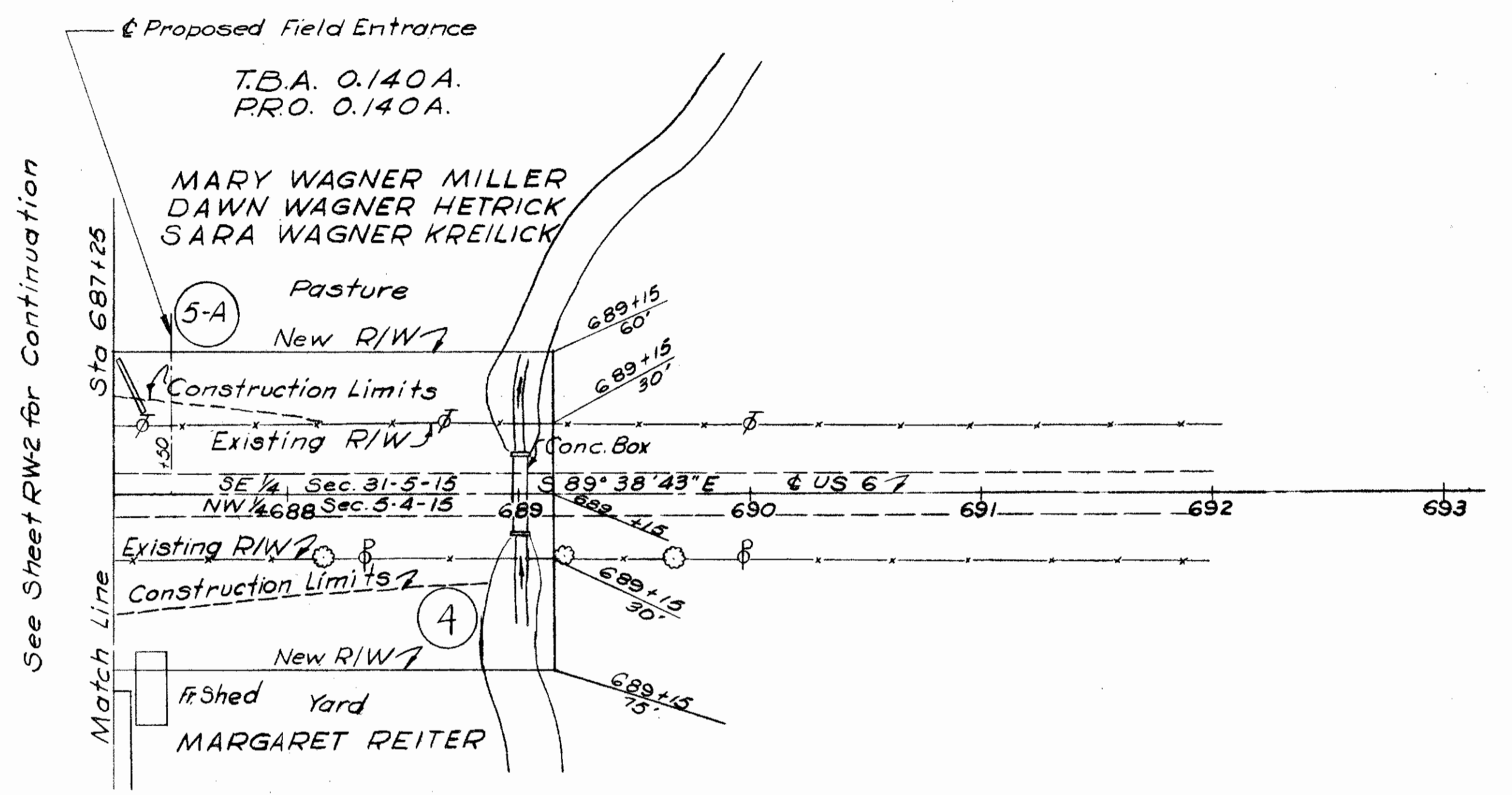
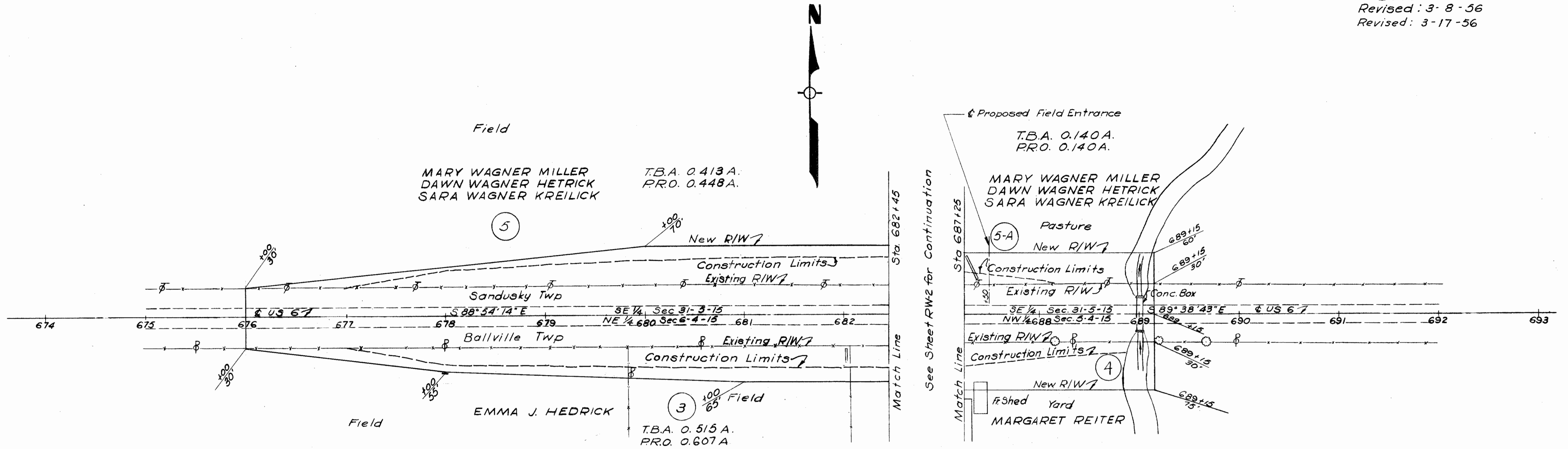
FOR ANY QUESTIONS PLEASE CONTACT ODOT DISTRICT 2 REAL ESTATE AT 119-353-8131

SANDUSKY TWP.  
BALLVILLE TWP.

FED. RD. DIVISION	STATE	PROJECT	TYPE FUNDS
2	OHIO		

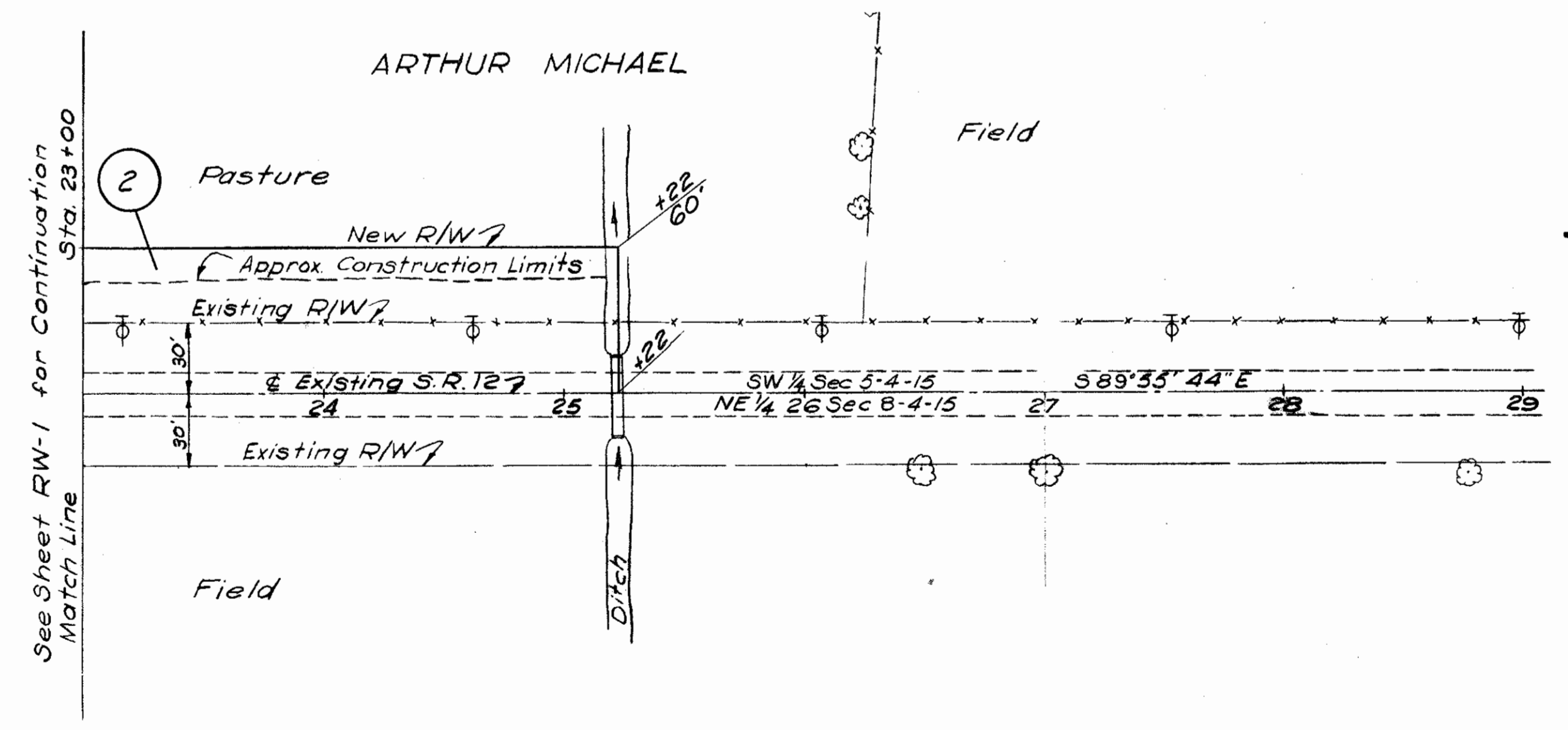
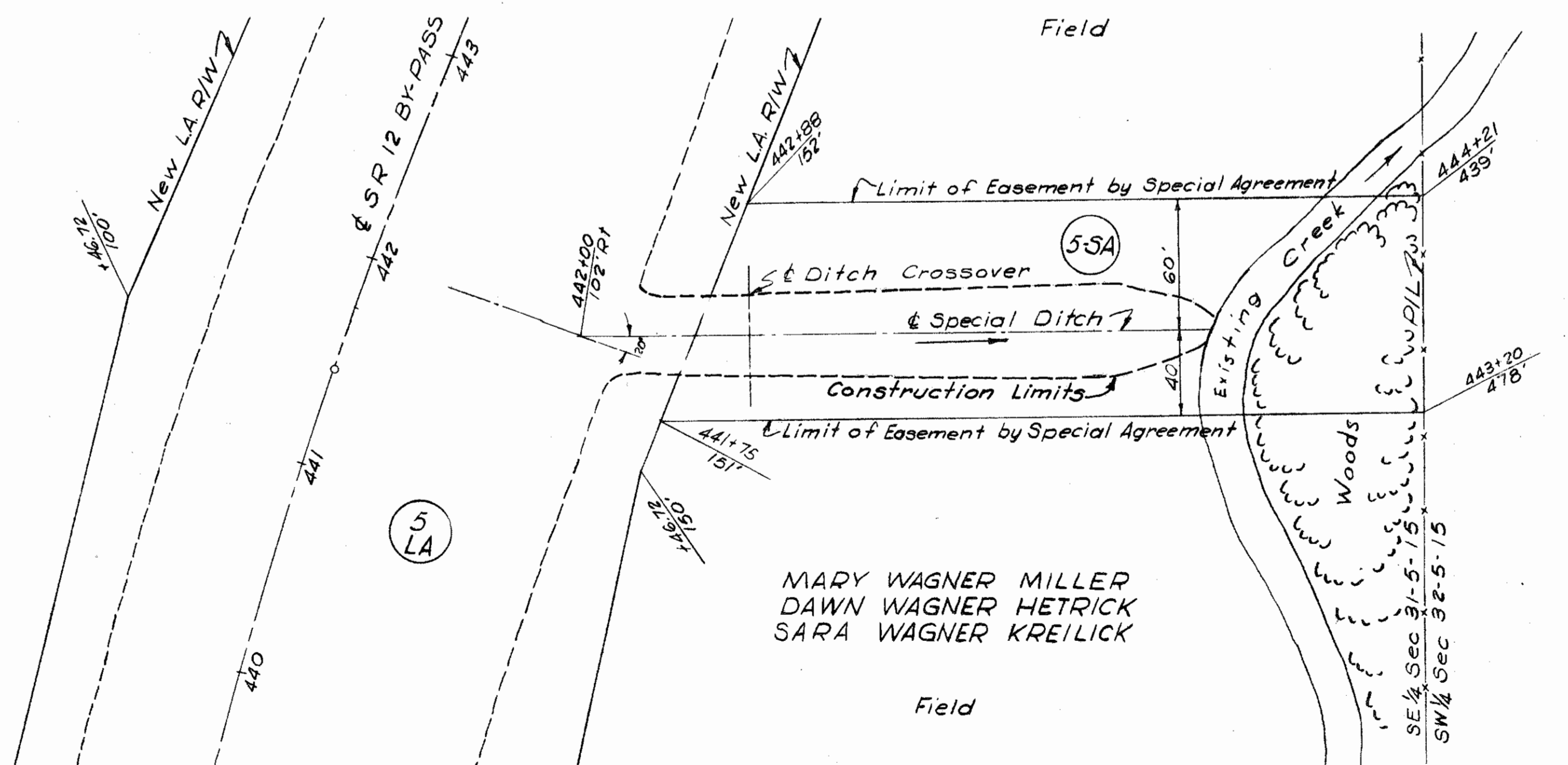
71  
75

SANDUSKY COUNTY  
LIMITED ACCESS  
Date: 1-25-56  
Revised: 3-8-56  
Revised: 3-17-56



SANDUSKY TWP.

BALLVILLE TWP.



RW-3

RIGHT OF WAY - MISCELLANEOUS

USE K&E 3028 ERADICATOR

SANDUSKY TWP

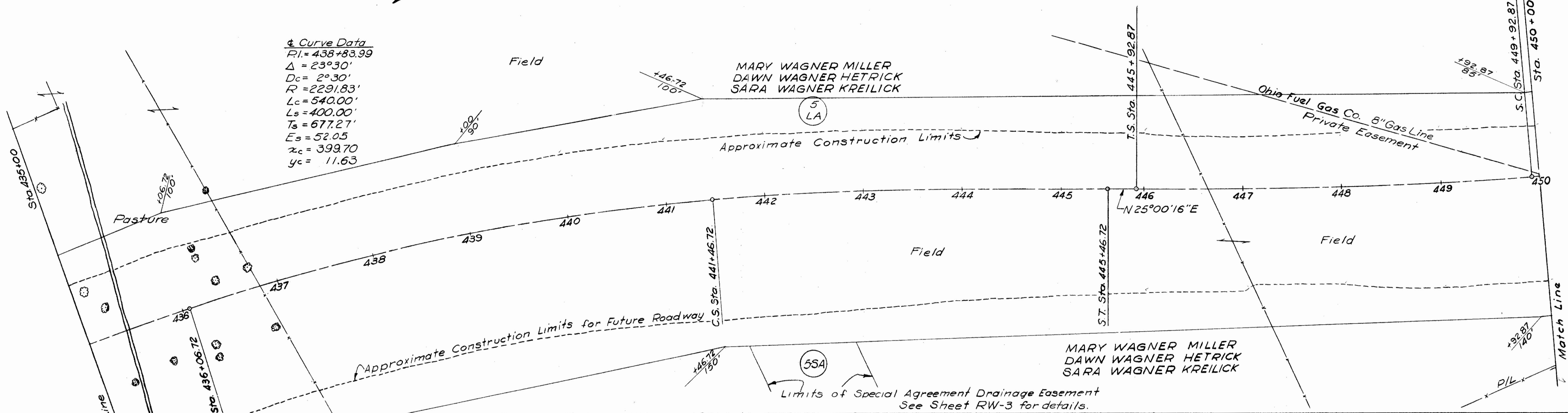
EQUATION  
Sta. 445+46.72 Back = Sta. 445+63.36 Ahead

FED. RD. DIVISION	STATE	PROJECT	TYPE FUND
2	OHIO		

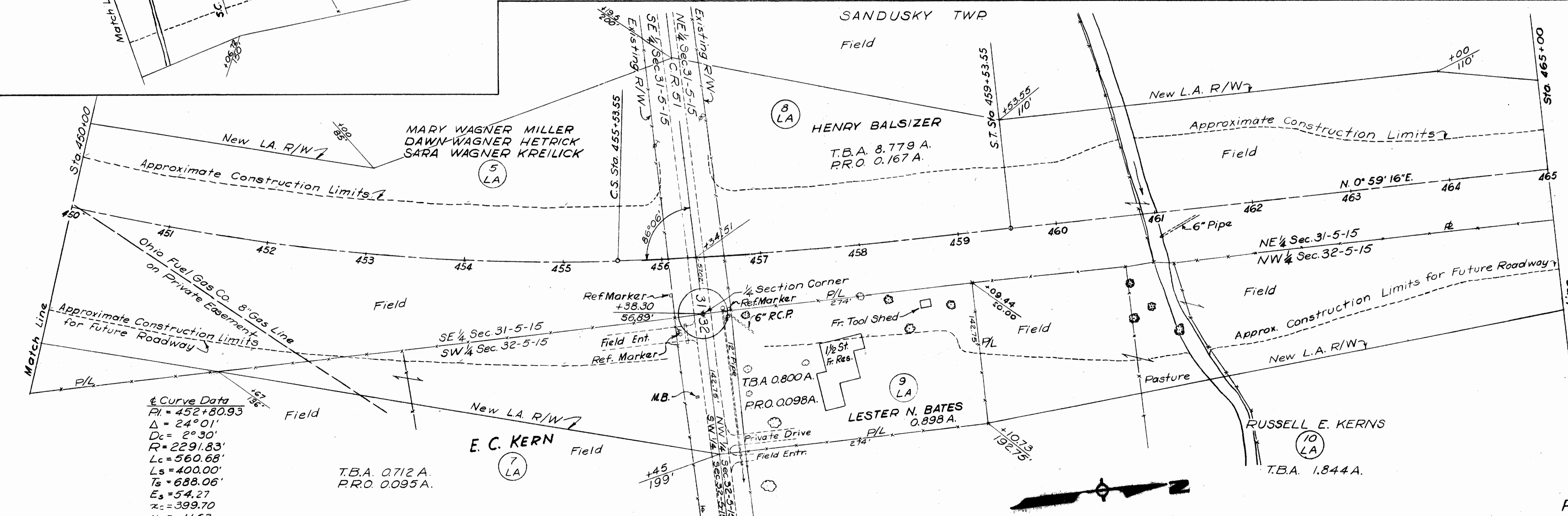
72  
75

SANDUSKY COUNTY  
SAN-12-7.16  
LIMITED ACCESS  
Date: 1-25-56  
Revised: 3-8-56

Curve Data  
 PI = 438+83.99  
 $\Delta = 23^{\circ}30'$   
 $D_c = 2^{\circ}30'$   
 $R = 2291.83'$   
 $L_c = 540.00'$   
 $L_s = 400.00'$   
 $T_s = 677.27'$   
 $E_s = 52.05'$   
 $x_c = 399.70'$   
 $y_c = 11.63'$



SANDUSKY TWP



Curve Data  
 PI = 452+80.93  
 $\Delta = 24^{\circ}01'$   
 $D_c = 2^{\circ}30'$   
 $R = 2291.83'$   
 $L_c = 560.68'$   
 $L_s = 400.00'$   
 $T_s = 688.06'$   
 $E_s = 54.27'$   
 $x_c = 399.70'$   
 $y_c = 11.63'$

Scanned  
July 14, 2014

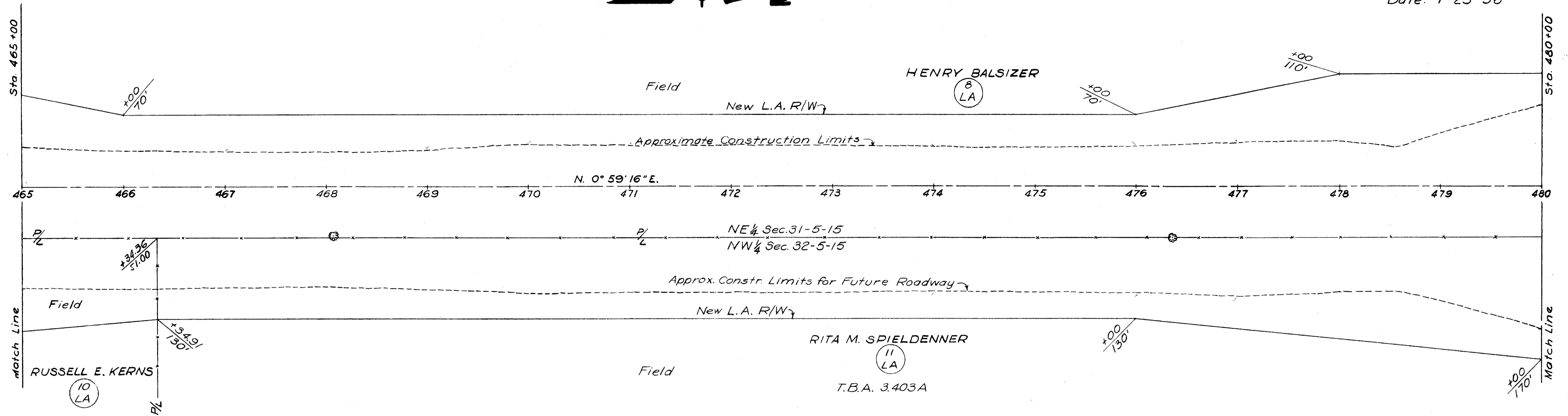
USE K&E 3028 ERADICATOR

SANDUSKY TWP.

SEC. NO.	STATE	PROJECT	TYPE
2	OHIO		PURSE

73  
75

SANDUSKY COUNTY  
SAN-12-7.14  
LIMITED ACCESS  
Date: 1-25-56



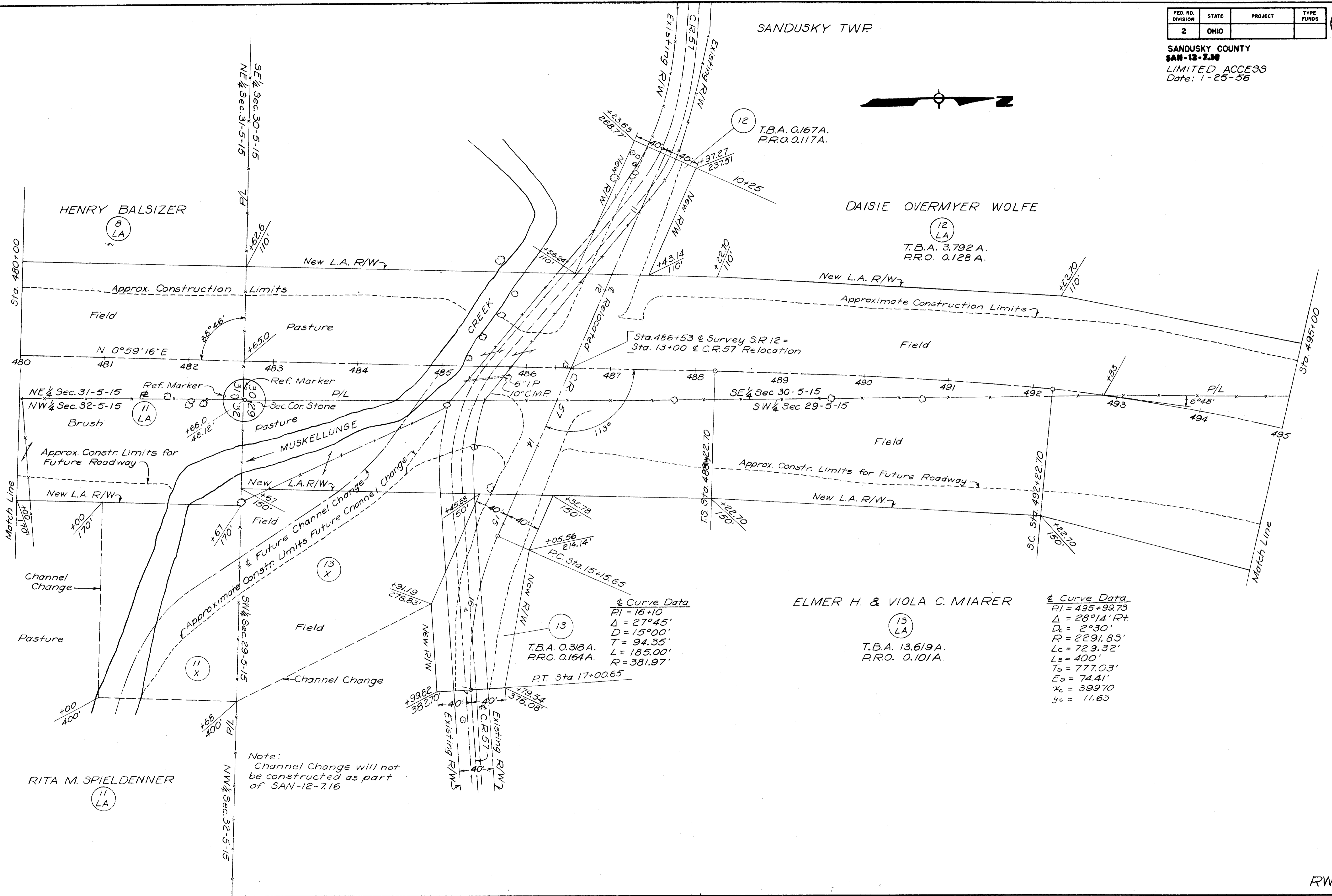
RW-5

RIGHT OF WAY STA. 465+00 TO STA. 480+00

USE K&E 3028 ERADICATOR

FED. RD. DIVISION	STATE	PROJECT	TYPE FUNDS	74
2	OHIO			75

SANDUSKY COUNTY  
 SAN-12-7.16  
 LIMITED ACCESS  
 Date: 1-25-56



Curve Data  
 P.I. = 16+10  
 $\Delta = 27^{\circ}45'$   
 D = 15'00"  
 T = 94.35'  
 L = 185.00'  
 R = 381.97'

Curve Data  
 P.I. = 495+99.73  
 $\Delta = 28^{\circ}14' Rt$   
 Dc = 2'30"  
 R = 2291.83'  
 Lc = 729.32'  
 Ls = 400'  
 Ts = 777.03'  
 Es = 74.41'  
 Xc = 399.70'  
 Yc = 11.63'

Note:  
 Channel Change will not  
 be constructed as part  
 of SAN-12-7.16

RW-6

RIGHT OF WAY STA. 480+00 TO STA. 495+00

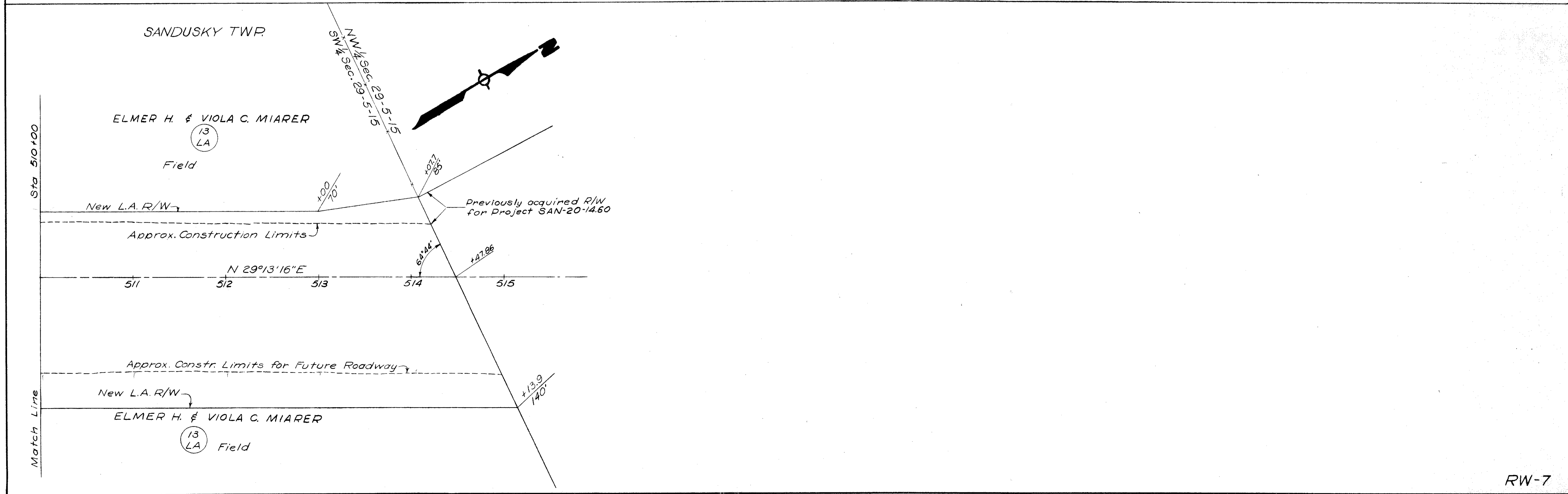
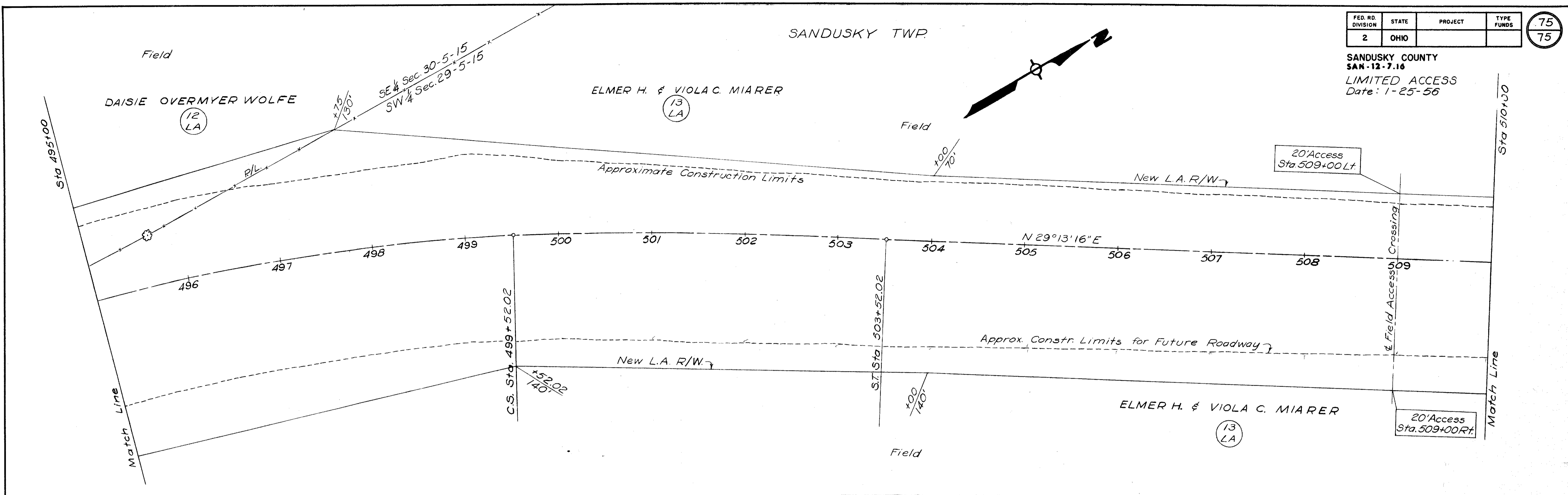
Scanned July 1987

USE K&E 3028 ERADIGATOR

FED. RD. DIVISION	STATE	PROJECT	TYPE FUNDS
2	OHIO		

75  
75

SANDUSKY COUNTY  
SAN-12-7.16  
LIMITED ACCESS  
Date: 1-25-56



RW-7