

Packet 2 Folder 5

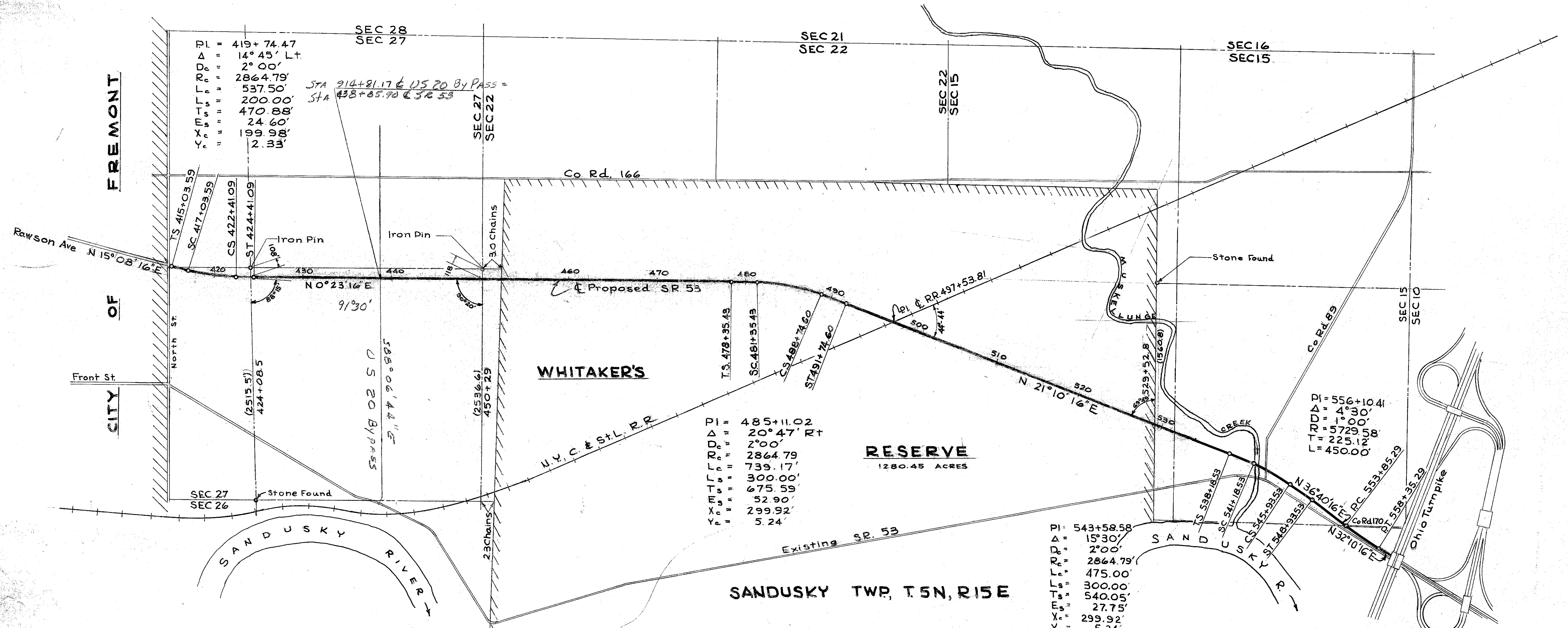
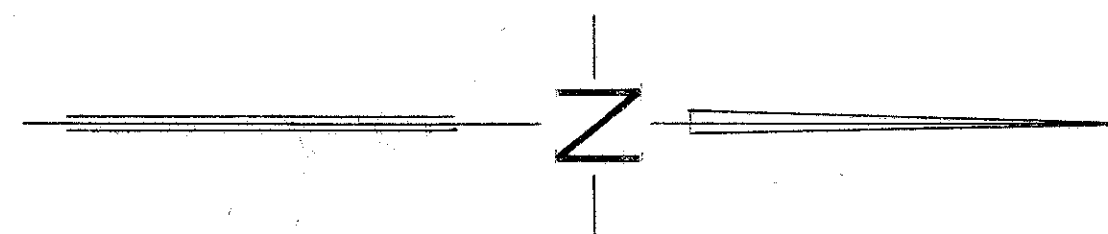
LOCATION PLAN

STATE ROUTE 53
 FREMONT - PORT CLINTON ROAD
 SAN-53-767
 SANDUSKY COUNTY

Received 10-12-55 at 1
 Recorded _____
 Plat Book 3 Page 49
 Signed _____ Recorder Sandusky County, Ohio
 Fee _____

Signed Rexford C. Rath
 Rexford C. Rath
 Registered Surveyor No. 3518

Date _____



CENTER LINE REFERENCE MONUMENTS WILL BE SET AFTER CONSTRUCTION

TS STA 415+03.59	ST STA 424+41.09	STA 434+00	STA 444+00	STA 453+00	STA 462+00	STA 471+00	TS STA 478+35.43	STA 485+00	ST STA 491+74.60	STA 501+00	STA 511+00	STA 521+00	STA 530+00	TS STA 538+18.53	ST STA 548+39.53

R35053A #1 F-42

SANDUSKY TWP

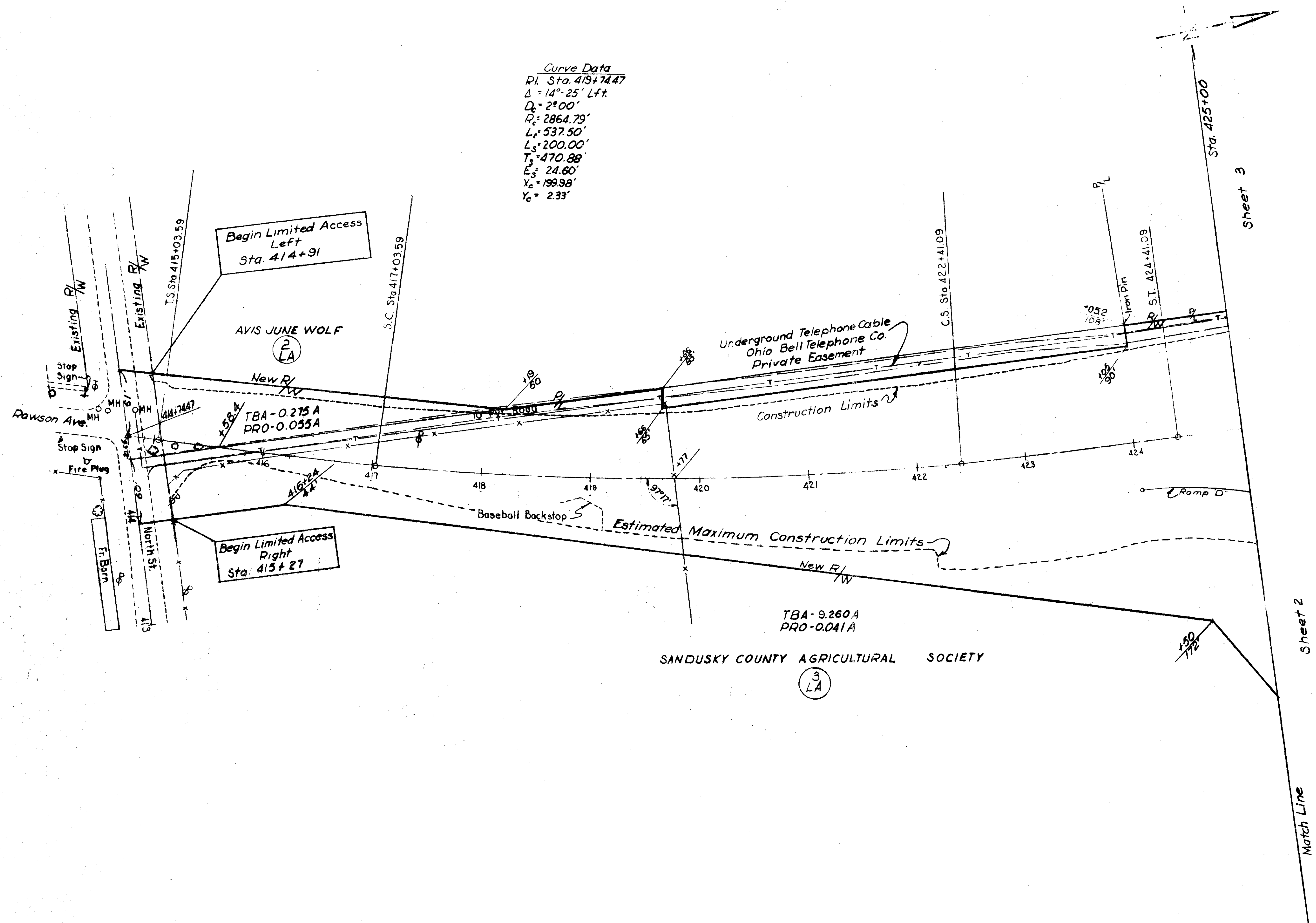
DATE-5-25-55
Revised - 6-16-55
" 6-23-55

FED. RD. DIVISION	STATE	PROJECT	TYPE FUNDS
2	OHIO	F-584(2)	

121
132

SANDUSKY COUNTY
SAN-53-7.67
LIMITED ACCESS

Curve Data
 P.I. Sta. 419+74.47
 $\Delta = 14^{\circ} 25' \text{ Lft.}$
 $D_c = 2^{\circ} 00'$
 $R_c = 2864.79'$
 $L_c = 537.50'$
 $L_s = 200.00'$
 $T_s = 470.88'$
 $E_s = 24.60'$
 $X_c = 199.98'$
 $Y_c = 2.33'$



Sheet 3

Sheet 2

Match Line

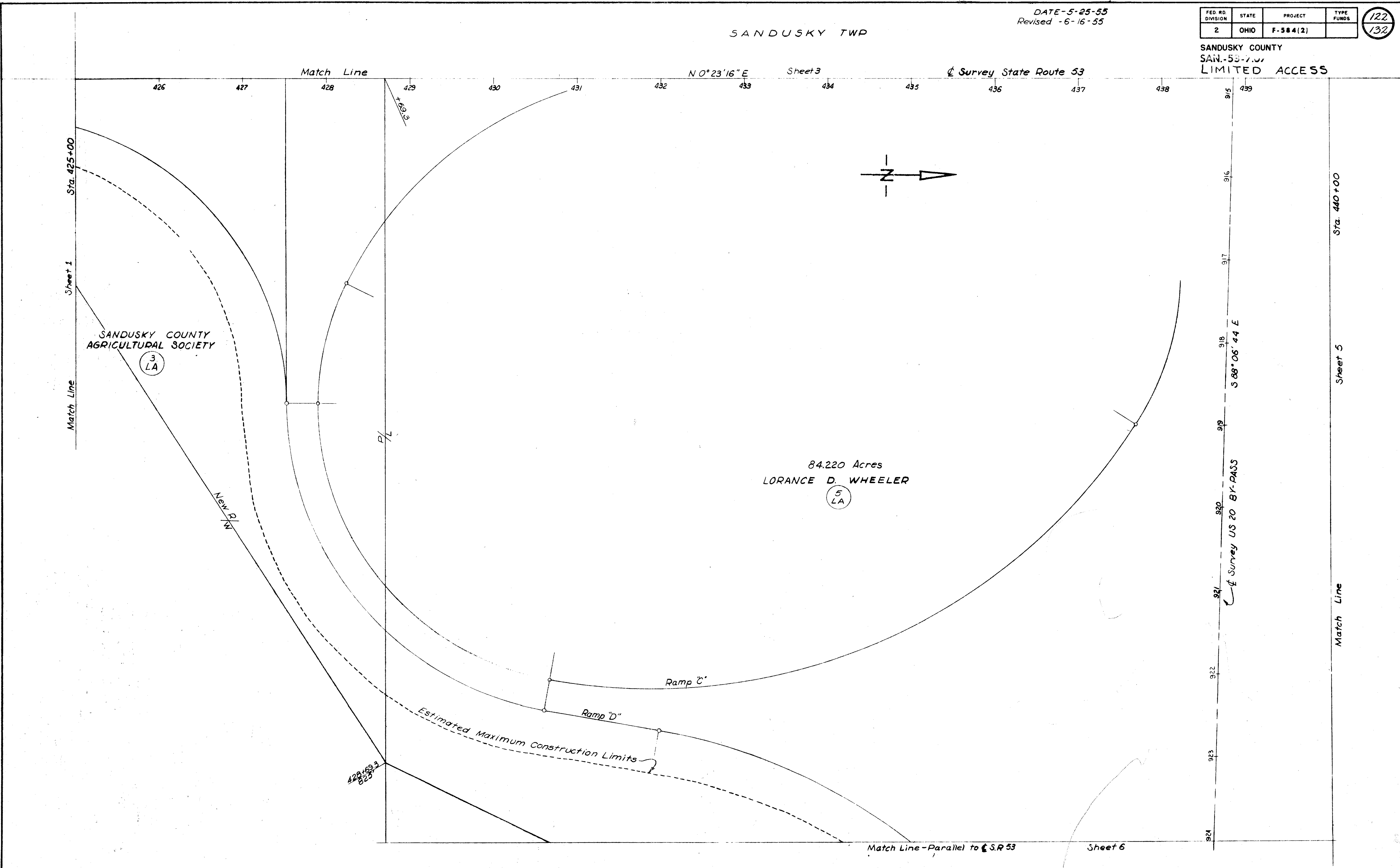
DATE - 5-25-55
Revised - 6-16-55

FED. RD. DIVISION	STATE	PROJECT	TYPE FUNDS
2	OHIO	F-584(2)	

122
132

SANDUSKY TWP

SANDUSKY COUNTY
SAN. 53-7.0,
LIMITED ACCESS



DATE - 5-25-55
Revised 6-17-55

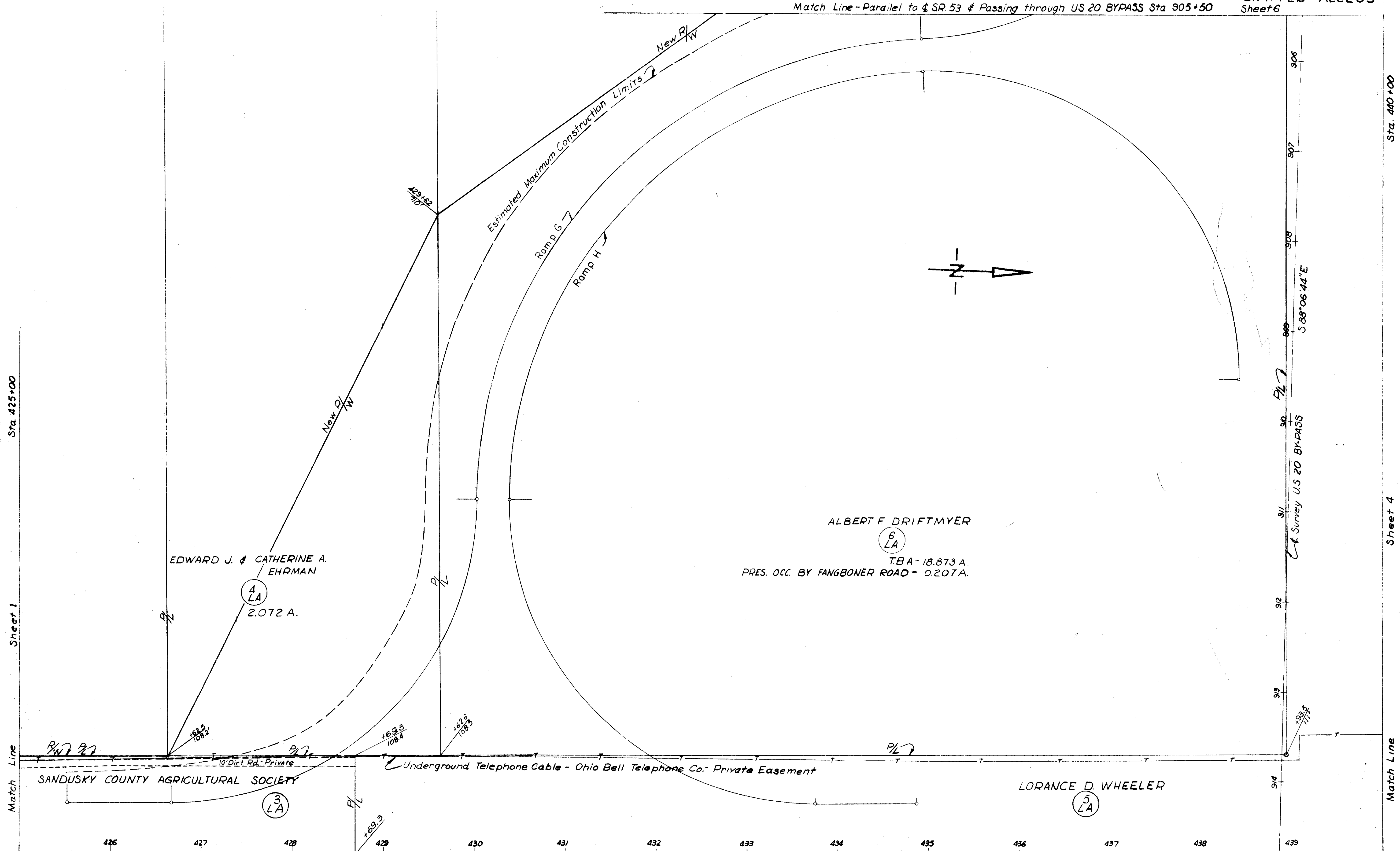
FED. RD. DIVISION	STATE	PROJECT	TYPE FUNDS
2	OHIO	F-584(2)	

123
132

SANDUSKY TWP

SANDUSKY COUNTY
SAN-53-7.67
LIMITED ACCESS
Sheet 6

Match Line - Parallel to & SR. 53 & Passing through US 20 BYPASS Sta 905+50



Sta. 425+00

Sheet 1

Match Line

Sta. 440+00

Sheet 4

Match Line

SANDUSKY COUNTY AGRICULTURAL SOCIETY

ALBERT F. DRIFTMYER

LORANCE D. WHEELER

Match Line

Sheet 2

$N 0^{\circ} 23' 16'' E$

Survey S.R. 53

RIGHT OF WAY - S.W. QUADRANT - RAWSON AVE. INTERCHAN

SANDUSKY TWP.

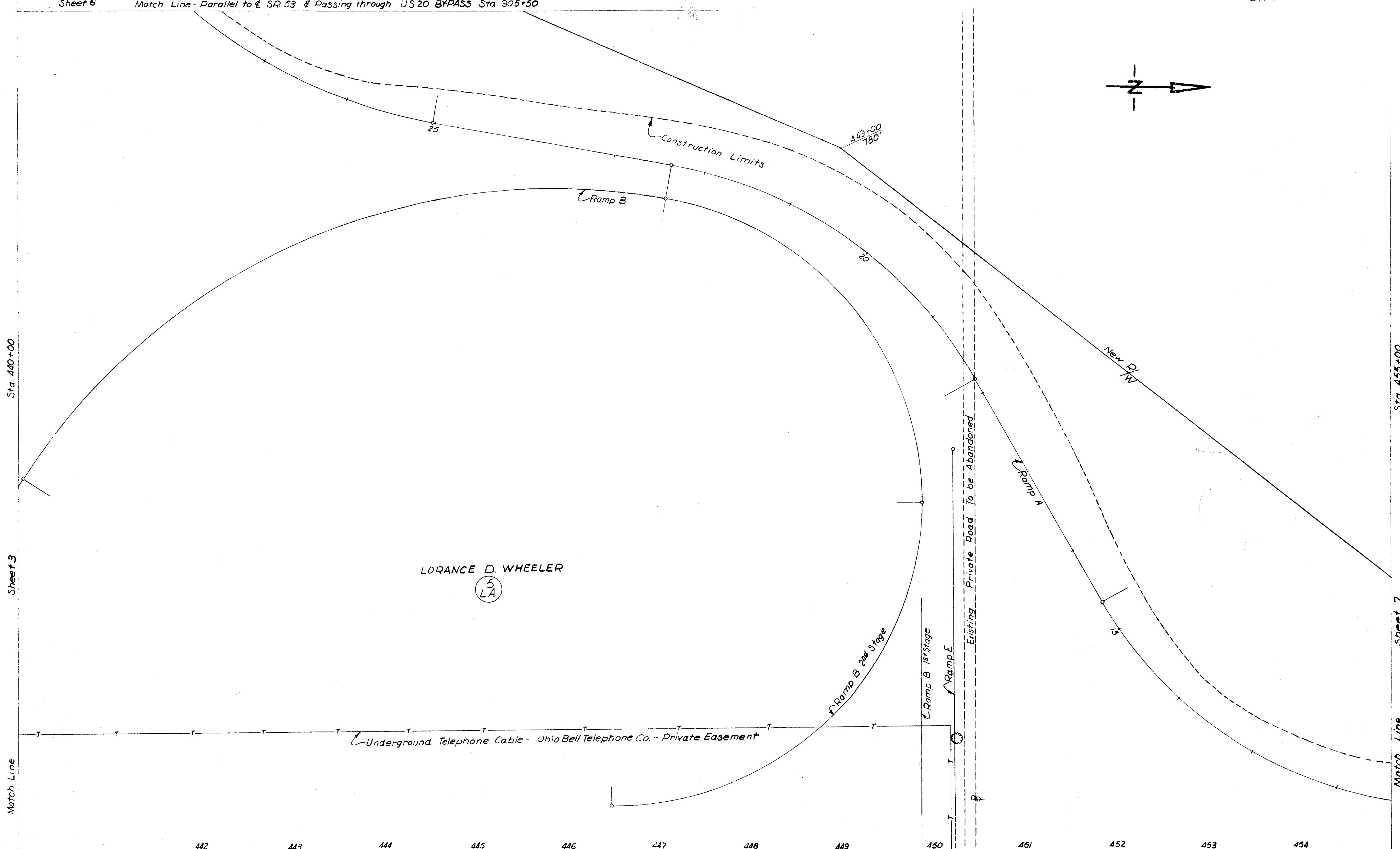
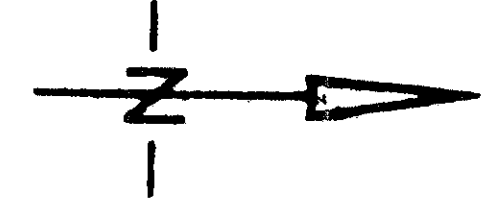
DATE - 5-25-55
Revised 6-17-55

FED. RD. DIVISION	STATE	PROJECT	TYPE FUNDS
2	OHIO	F. 584(2)	

124
132

SANDUSKY COUNTY
SAN.-53-7.67
LIMITED ACCESS

Sheet 6 Match Line - Parallel to ϕ SR 53 & Passing through US 20 BYPASS Sta. 305+50



LORANCE D. WHEELER
S
LA

Sta. 440+00

Sheet 9

Match Line

Sta. 455+00

Sheet 7

Match Line

442 443 444 445 446 447 448 449 450 451 452 453 454

N 0°23'16" E

Match Line ϕ Survey SR 53

Sheet 5

RIGHT OF WAY - N.W. QUADRANT - RAWSON AVE. INTERCHANGE

DATE - 5-25-55
Revised 6-17-55

FED. RD. DIVISION	STATE	PROJECT	TYPE FUNDS
2	OHIO	F-384(2)	

125
132

SANDUSKY TWP

SANDUSKY COUNTY
SAN-53-7.67
LIMITED ACCESS

N 0° 23' 16" E

Match Line - \perp Survey SR 53

Sheet 4

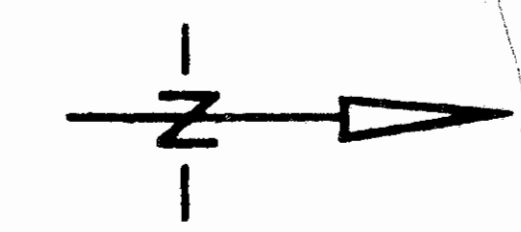
441 442 443 444 445 446 447 448 449 450 451 452 453 454

Sta. 440+00

Sheet 2

Match Line

LORANCE D. WHEELER
5
LA



Sta 455+00

Sheet 7

Match Line

Ramp I

Ramp J

Estimated Maximum Construction Limits

New R/W

Underground Telephone Cable - Ohio Bell Telephone Co.

Private Road

Private Easement

451+00
861/350

446+75
840'

Match Line - Parallel to \perp SR 53 & Passing through US 20 BYPASS Sta. 924+00

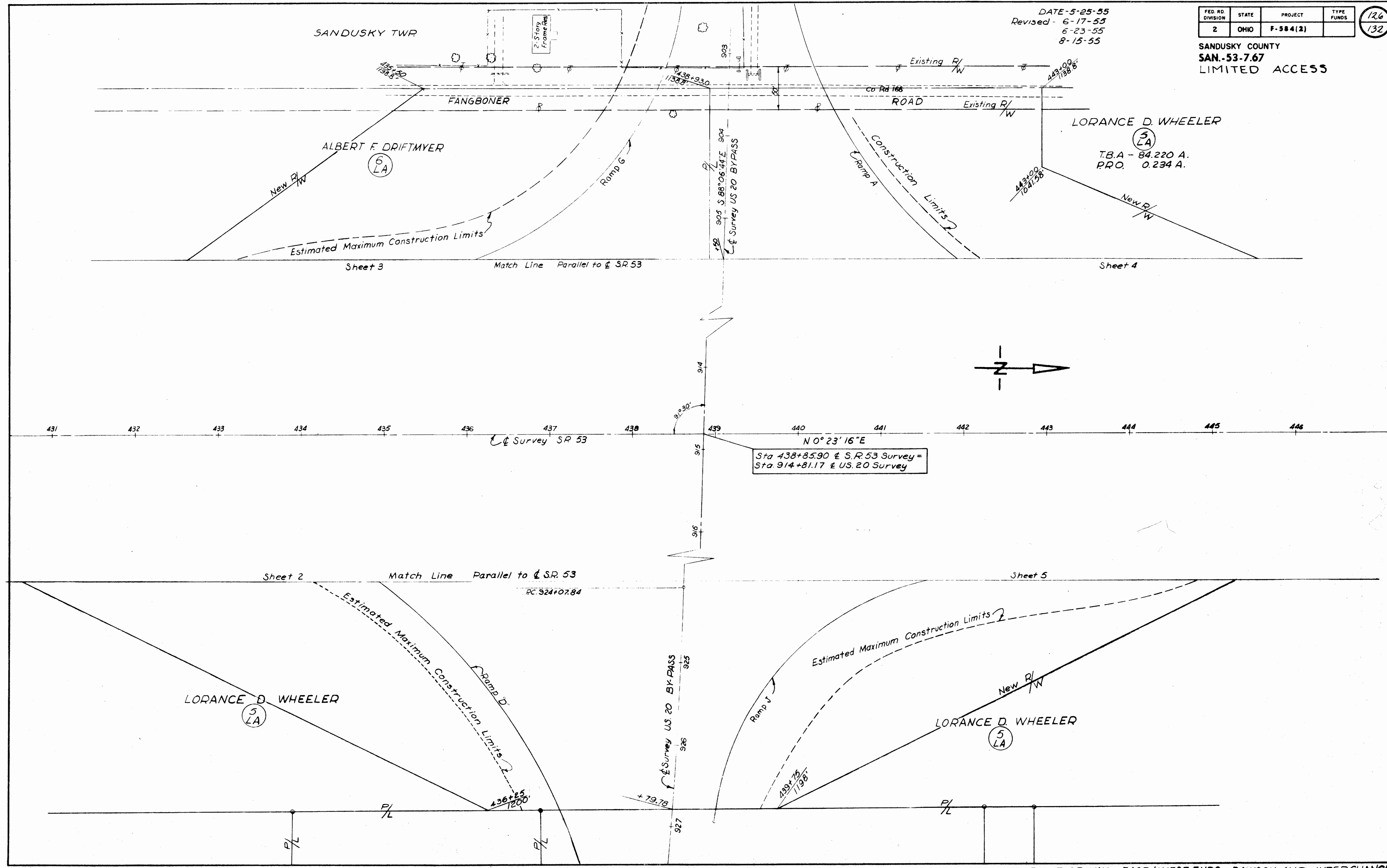
Sheet 6

DATE-5-25-55
Revised- 6-17-55
6-23-55
8-15-55

FED. RD. DIVISION	STATE	PROJECT	TYPE FUNDS
2	OHIO	F-584(2)	

SANDUSKY COUNTY
SAN-53-7.67
LIMITED ACCESS

126
132



SANDUSKY TWP

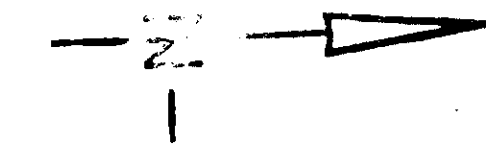
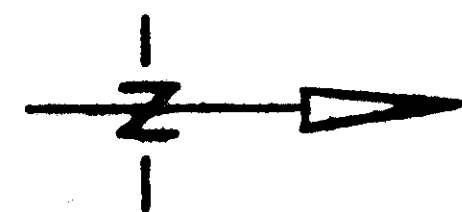
SANDUSKY TWP

DATE-5-25-55
Revised 6-17-55

FED. RD. DIVISION	STATE	PROJECT	TYPE FUNDS
2	OHIO	F-584(2)	

127
132

SANDUSKY COUNTY
SAN-53-7.67
LIMITED ACCESS



LORANCE D. WHEELER

5
TBA-1.350 A.
PRO-0034 A.

LORANCE D. WHEELER

5
LA

5
LA

CHARLES HERL et al.

7
LA

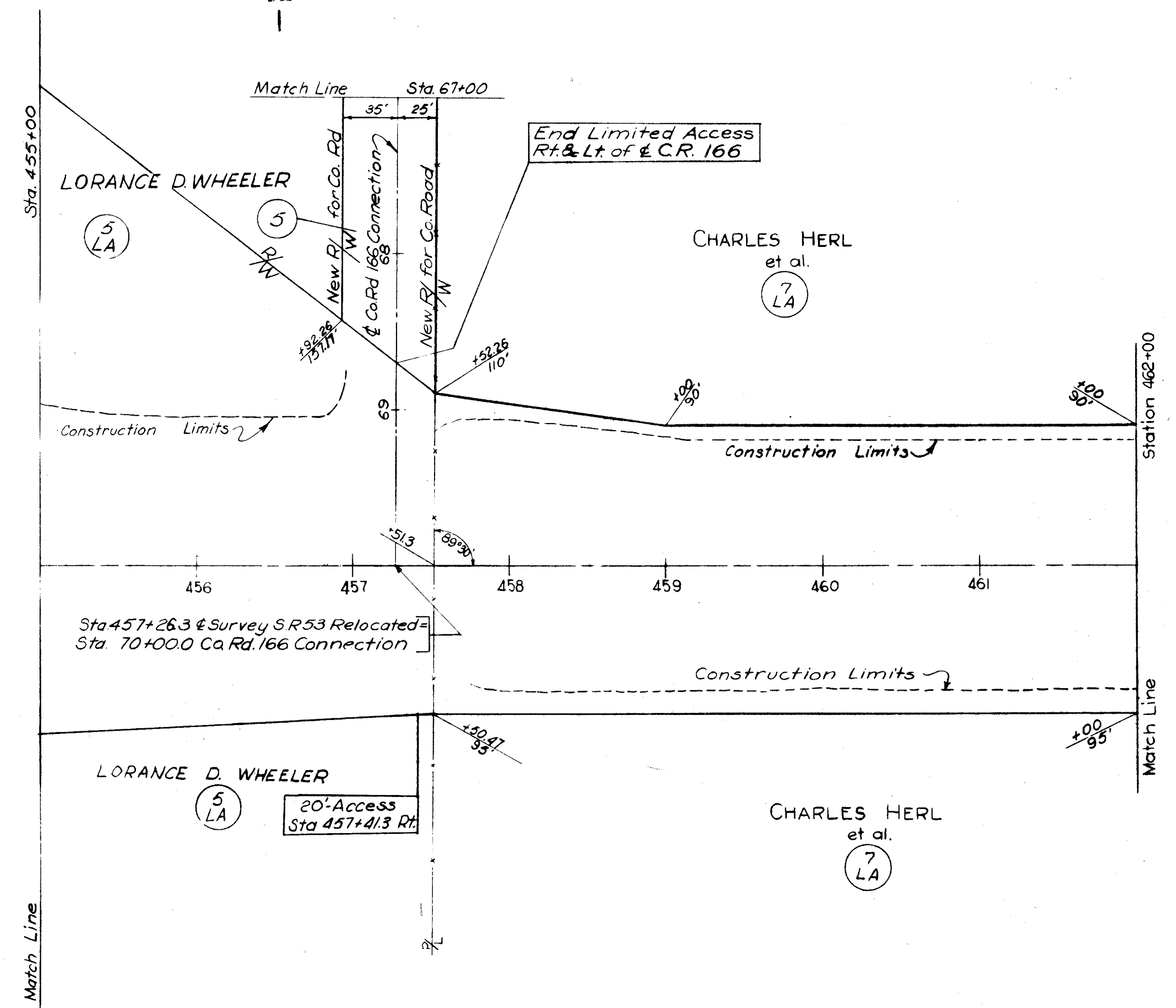
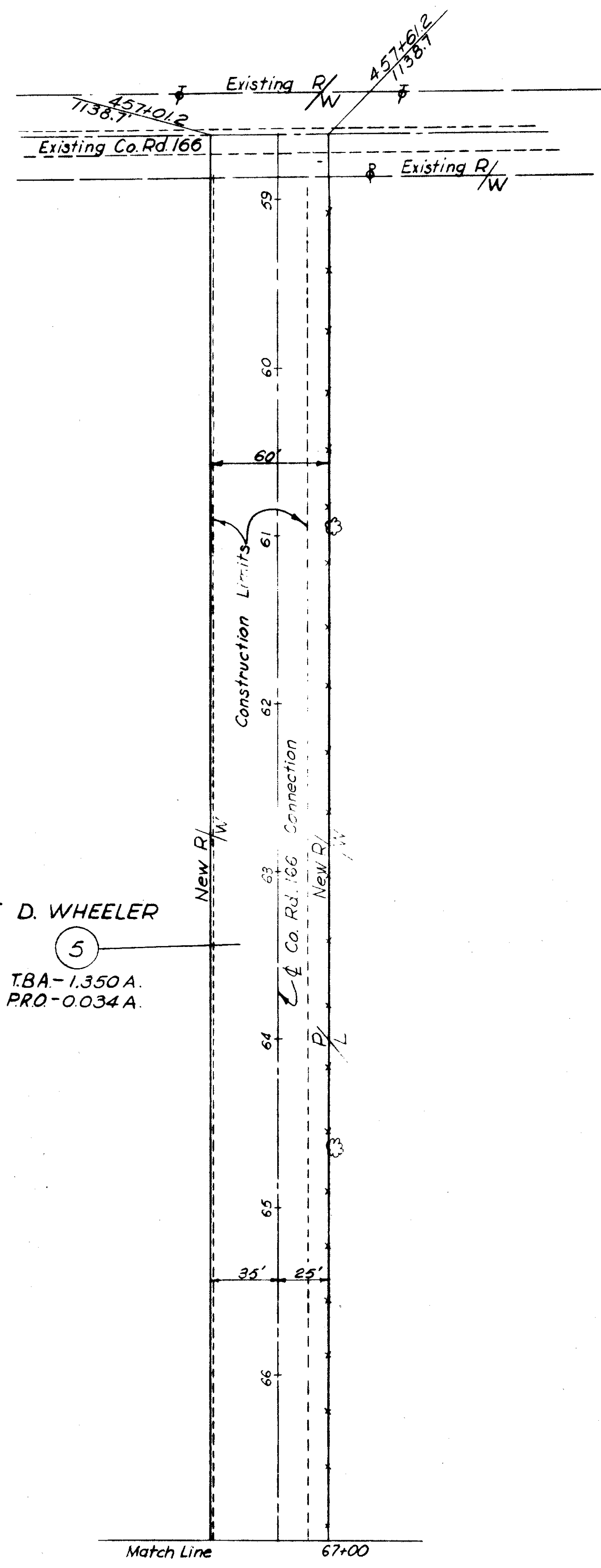
LORANCE D. WHEELER

5
LA

20'-Access
Sta 457+41.3 R/L

CHARLES HERL et al.

7
LA



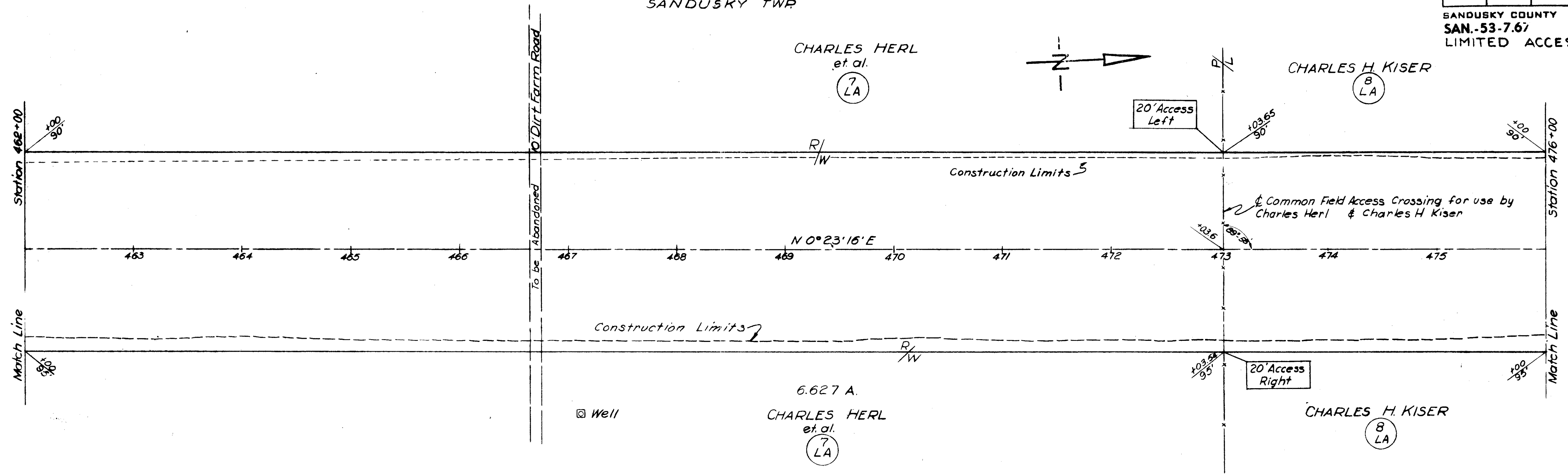
DATE 5-25-55
Revised 6-17-55

FED. RD. DIVISION	STATE	PROJECT	TYPE FUNDS
2	OHIO	F-384(2)	

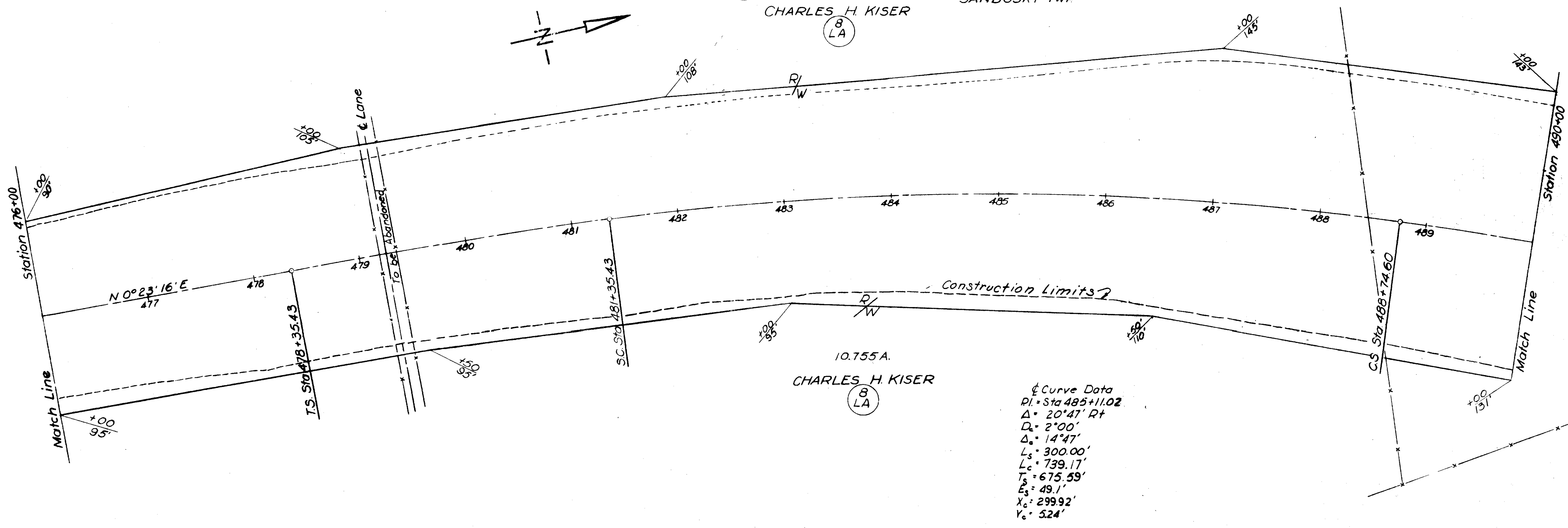
128
132

SANDUSKY COUNTY
SAN-53-7.67
LIMITED ACCESS

SANDUSKY TWP



SANDUSKY TWP



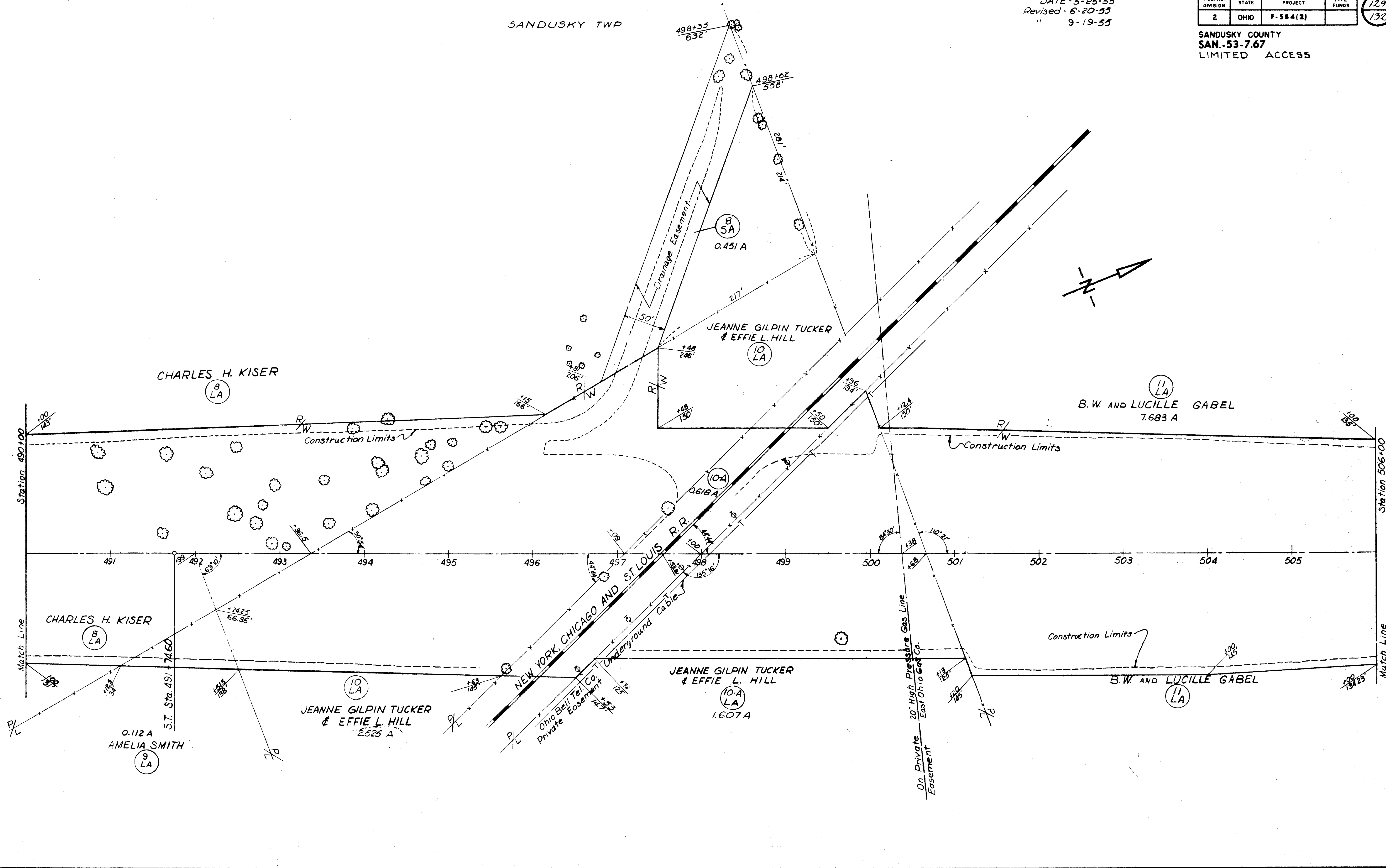
DATE - 5-25-55
Revised - 6-20-55
" 9-19-55

FED. RD. DIVISION	STATE	PROJECT	TYPE FUNDS
2	OHIO	F-584(2)	

129
132

SANDUSKY COUNTY
SAN. 53-7.67
LIMITED ACCESS

SANDUSKY TWP



DATE -5-25-55
Revised -6-20-55

FED. RD. DIVISION	STATE	PROJECT	TYPE FUNDS
2	OHIO	F-384(2)	

131
132

SANDUSKY COUNTY
SAN-53-7.67
LIMITED ACCESS

SANDUSKY TWP

FRANCES L. FOX
12 LA

FRED HUFFMAN
13 LA

13 SA
0.066 A

MUSKELLUNGE CREEK
Drainage Easement

Station 522+00

Station 536+00

Match Line

Match Line

523 524 525 526 527 528 529 530 531 532 533 534 535

N 21°10'16" E

FRANCES L. FOX
12 LA

20' Access
Sta 528+12 Rt.

TBA-5382 A
PRO-0.105 A
13 LA

FRED HUFFMAN

For County Road 89 Right of Way see Sheet 12

SANDUSKY TWP

FRED HUFFMAN
13 LA

IZAAK WALTON LEAGUE
15 LA

HERMAN BUCK
16 LA

ROBERT C. & ORLENA M. FISHER
17 LA

DONALD H. & CATHERINE E. LOGSDON
18 LA

I.A. & ANGELINE LOGSDON
19 LA

Station 536+00

Station 551+00

Match Line

Match Line

N 21°10'16" E

End Limited Access Right

FRED HUFFMAN
13 LA

Curve Data
 PI = 543+58.58
 Δ = 15°30'
 D_c = 2°00'
 R_c = 2864.69'
 L_c = 475.00'
 L_s = 300.00'
 T_s = 540.05'
 E_s = 2775
 X_c = 299.92
 Y_c = 5.24

TBA-0.321 A
PRO-0.295 A
I.A. & ANGELINE LOGSDON
14 LA

MAYNARD L. BISHOP
TBA-0.010 A
PRO-0.103 A

JOHN J. & MABEL B. SCHMITZ
22

TBA-0.406 A
PRO-0.354 A

TBA-0.684 A
PRO-0.189 A

Gas Pumps

Fr. Gar

Fr. Groc

Fr. Res.

Fr. Res.

Fr. Res.

Fr. Barn

Fr. & Brick Res.

Fr. Shed

Fr. Shed

Fr. Shed

Fr. Shed

Fr. Shed

Fr. Shed

Fr. Shed

Fr. Shed

Fr. Shed

Fr. Shed

Fr. Shed

Fr. Shed

Fr. Shed

Fr. Shed

Fr. Shed

Fr. Shed

Fr. Shed

Fr. Shed

Fr. Shed

Fr. Shed

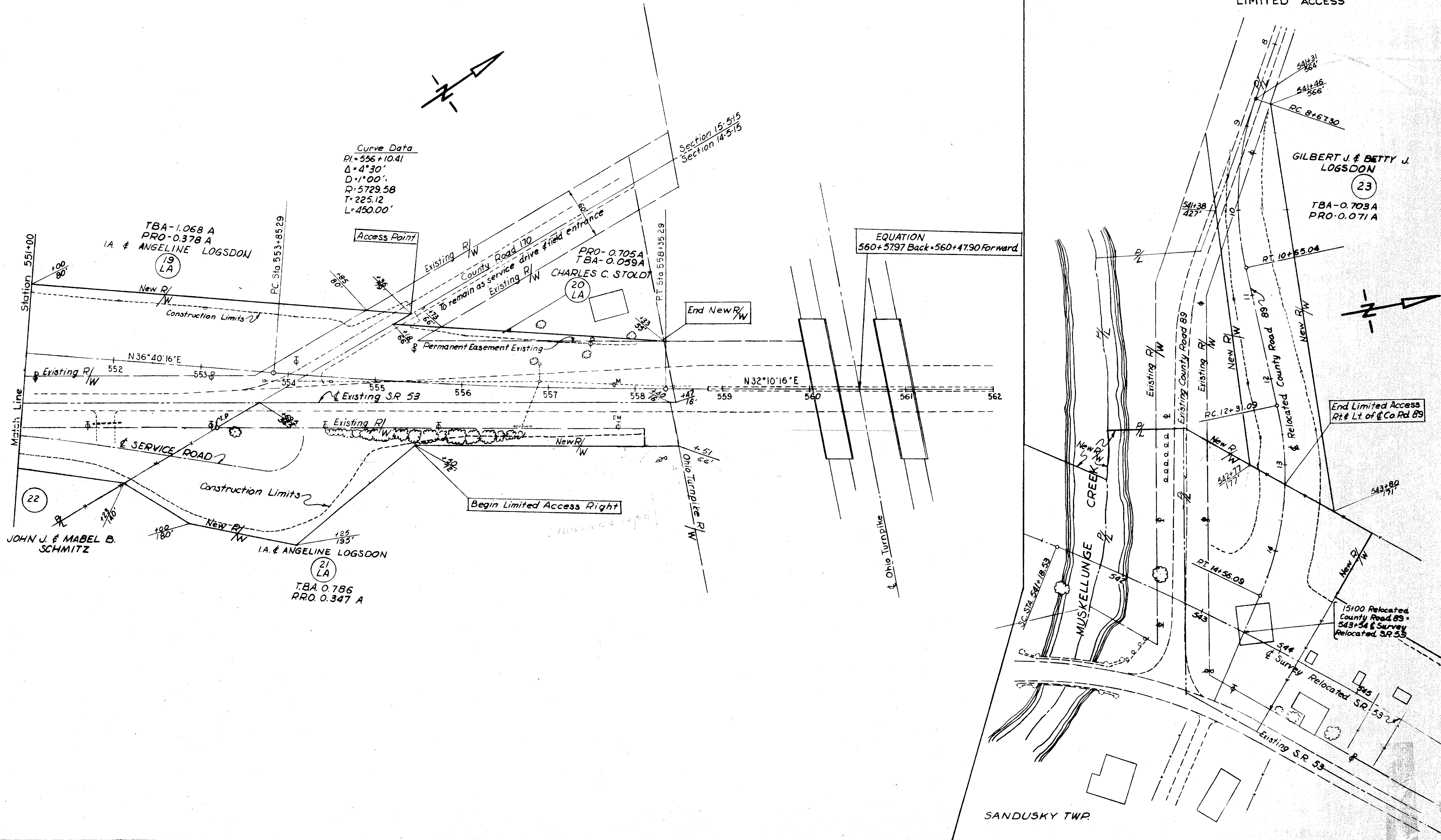
SANDUSKY TWP

DATE-5-25-55
Revised-6-20-55

FED. RD. DIVISION	STATE	PROJECT	TYPE FUNDS
2	OHIO	F-584(2)	

132
132

SANDUSKY COUNTY
SAN-53-7.67
LIMITED ACCESS



Curve Data
 PI=556+10.41
 $\Delta=4^{\circ}30'$
 $D=1^{\circ}00'$
 $R=5729.58$
 $T=225.12$
 $L=450.00'$

EQUATION
 560+5797 Back-560+4790 Forward

Begin Limited Access Right

End Limited Access
 Rt. & Lt. of Co. Rd. 89

SANDUSKY TWP.

RIGHT OF WAY STA. 551+00 TO STA. 562+00 & COUNTY ROAD 89