

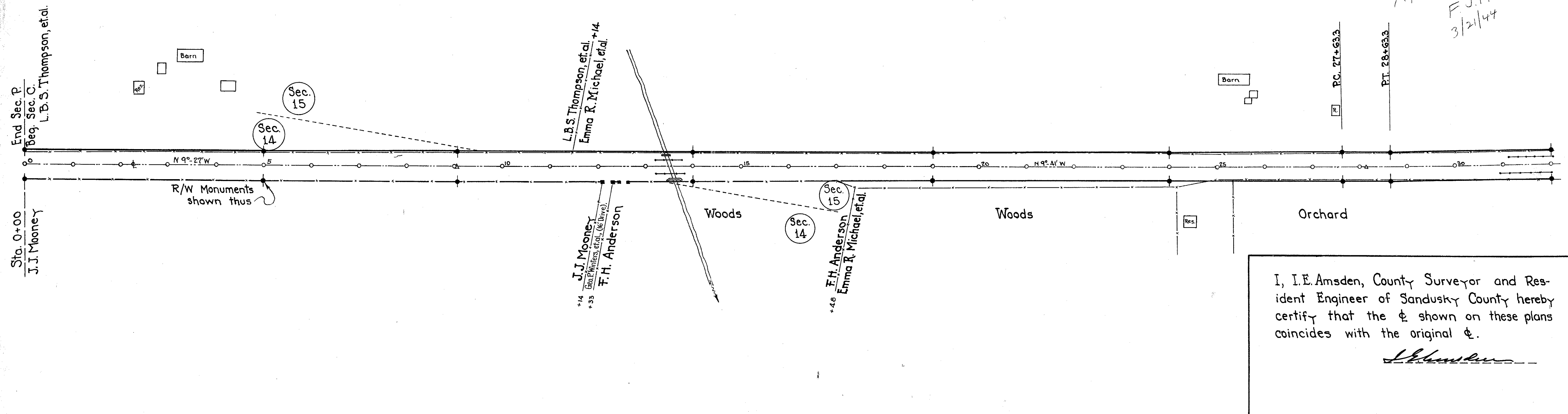
Sta. 0+00 - Beg. Sec. "C"  
Drill hole on  $\frac{1}{2}$  Pres. 16' Conc.  
Pavt. - End of Pres. 16' Brick  
Pavt. -  $\Delta = 0^{\circ} 0'$

Sta. 9+05 - Drill Hole on P.I.  
 $\Delta = 0^{\circ} 14' L$

Sta. 28+13.3 - Drill Hole on P.I.  
 $\Delta = 1^{\circ} 0' L$   
 $D = 1^{\circ} 0'$   
 $L = 100'$   
 $T = 50'$

R/W Plans  
S.H. 277, Secs. "C & O"  
Sandusky County

*R/W ok as shown  
F.J.F.  
3/21/44*

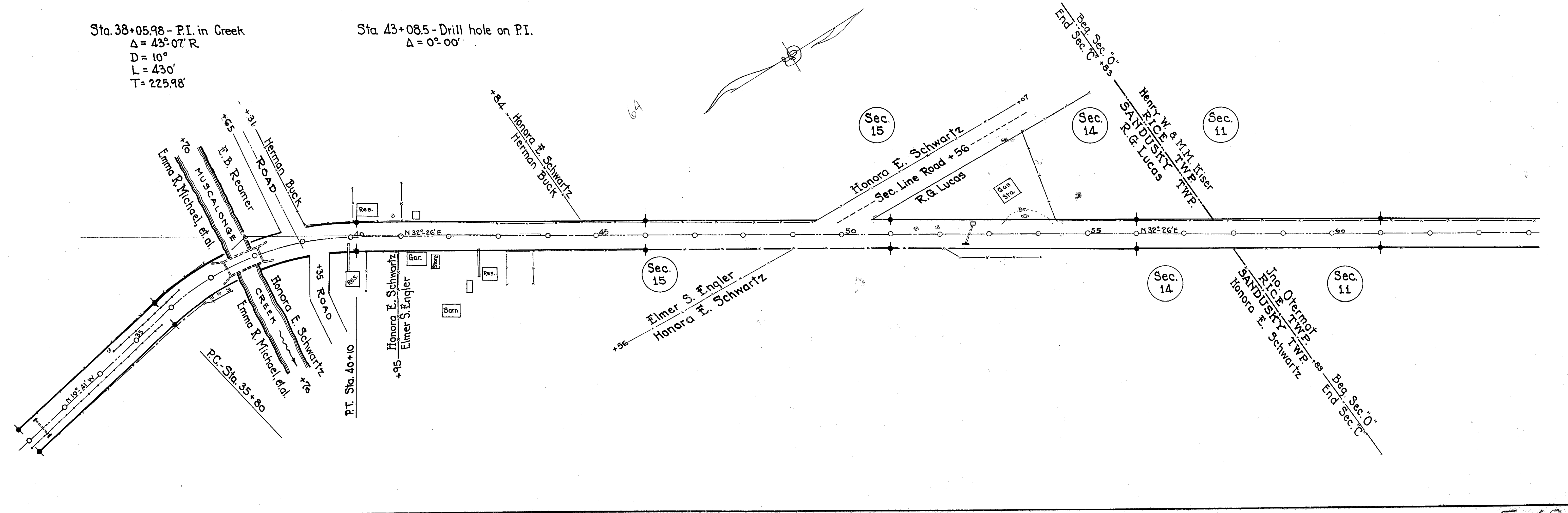


I, I.E. Amsden, County Surveyor and Resident Engineer of Sandusky County hereby certify that the  $\frac{1}{2}$  shown on these plans coincides with the original  $\frac{1}{2}$ .

*I.E. Amsden*

Sta. 38+05.98 - P.I. in Creek  
 $\Delta = 43^{\circ} 07' R$   
 $D = 10^{\circ}$   
 $L = 430'$   
 $T = 225.98'$

Sta. 43+08.5 - Drill hole on P.I.  
 $\Delta = 0^{\circ} 00'$



RS-53 #2 F-18

