

O.D.O.T. DISTRICT 2 SURVEY OFFICE (USE ONLY)

PERSONNEL _____ REFERENCE NO. 1 SHEET 1 OF 25

NOTES RHOADES DATE 6/1/20 ROUTE SR 53

H.C. O'DONNELL WEATHER SUNNY COUNTY SANDUSKY

R.C. LEU TEMP. 46° TOWNSHIP BALLVILLE

SECTION 31

DWG BY O'DONNELL PID 101277

T 4 N R 5 E

TYPE MONUMENT MONBOX W/ 1" IPIN

ON SURFACE - ~~BELOW~~ ON

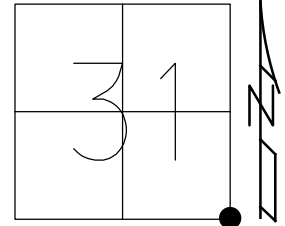
~~LEFT~~ - CL PAV'T - RIGHT 9.5'

2.0' TO RT EDGE PAVEMENT

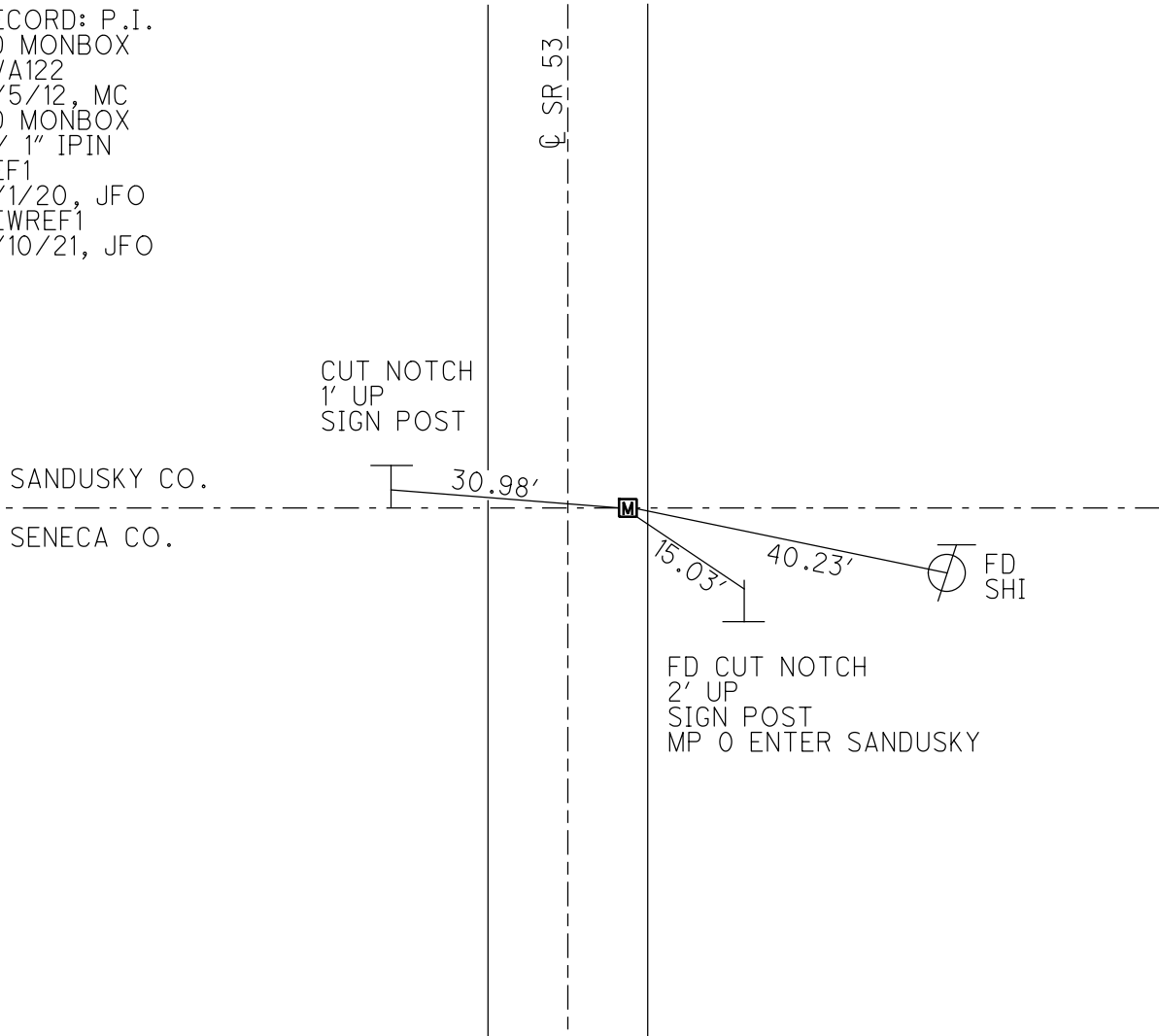
STATION: 0+00

HORZ.DATUM: NAD83 (2011) GEOID: 2012A

GRID: NORTHING: 579541.497 EASTING: 1784953.199



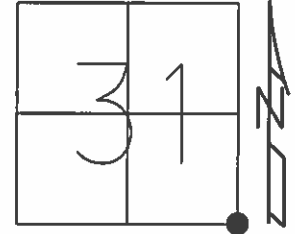
RECORD: P.I.
FD MONBOX
SVA122
6/5/12, MC
FD MONBOX
W/ 1" IPIN
REF1
6/1/20, JFO
NEWREF1
2/10/21, JFO



O.D.O.T. DISTRICT 2 SURVEY OFFICE (USE ONLY)

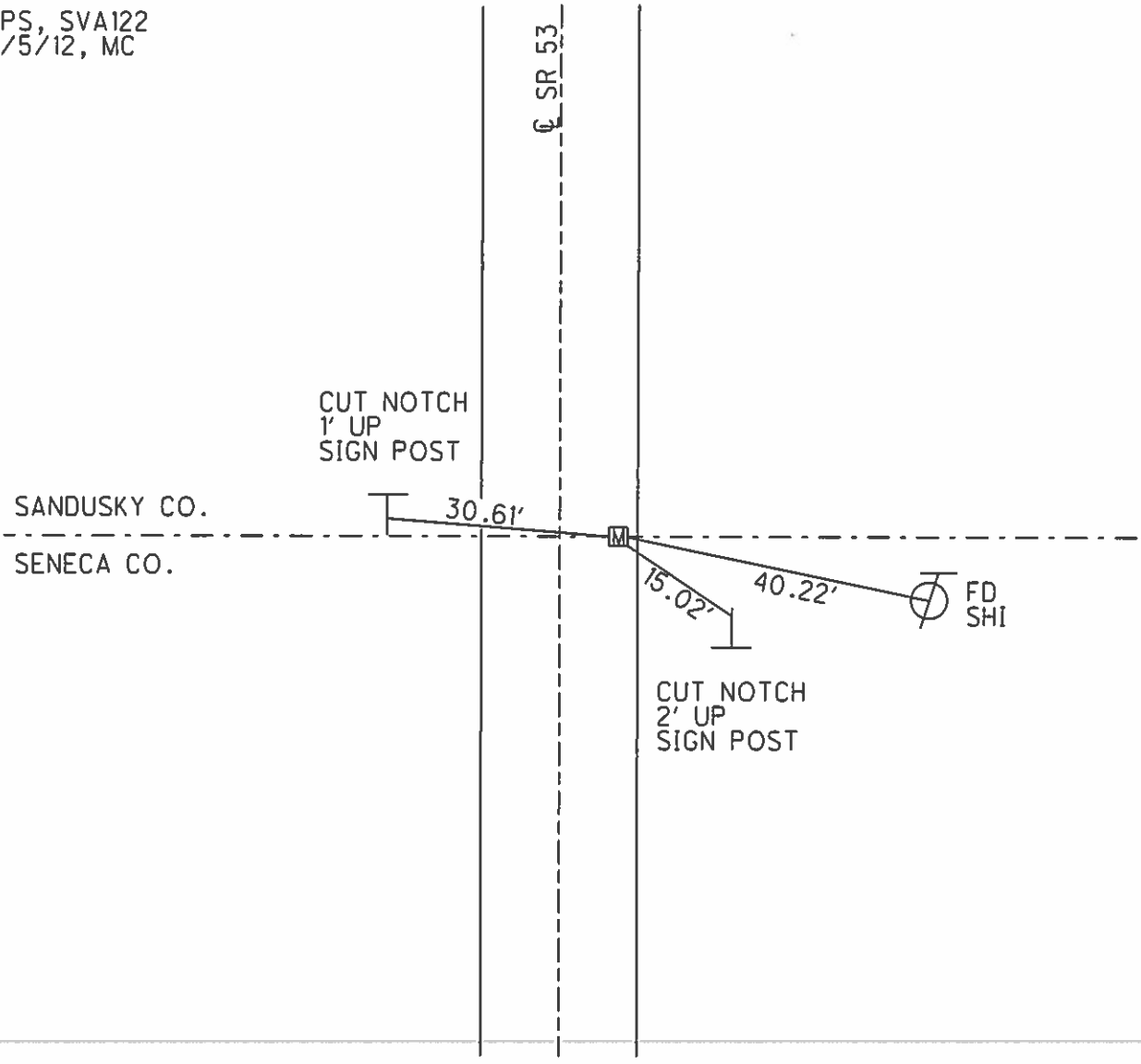
PERSONNEL _____ REFERENCE NO. 1 SHEET 1 OF 25
 NOTES CANTERBURY DATE 6/5/12 ROUTE SR 53
 H.C. HUSS WEATHER SUNNY COUNTY SANDUSKY
 R.C. COUTCHER TEMP. 90° TOWNSHIP BALLVILLE
 _____ SECTION 31
 _____ T 4 N R 5 E

TYPE MONUMENT MON.BOX
 ON SURFACE - ~~BELOW~~ ON
~~LEFT~~ - Q PAV'T - RIGHT 9.5'
2.0' TO RT EDGE PAVEMENT
 S.L.M. 0+00



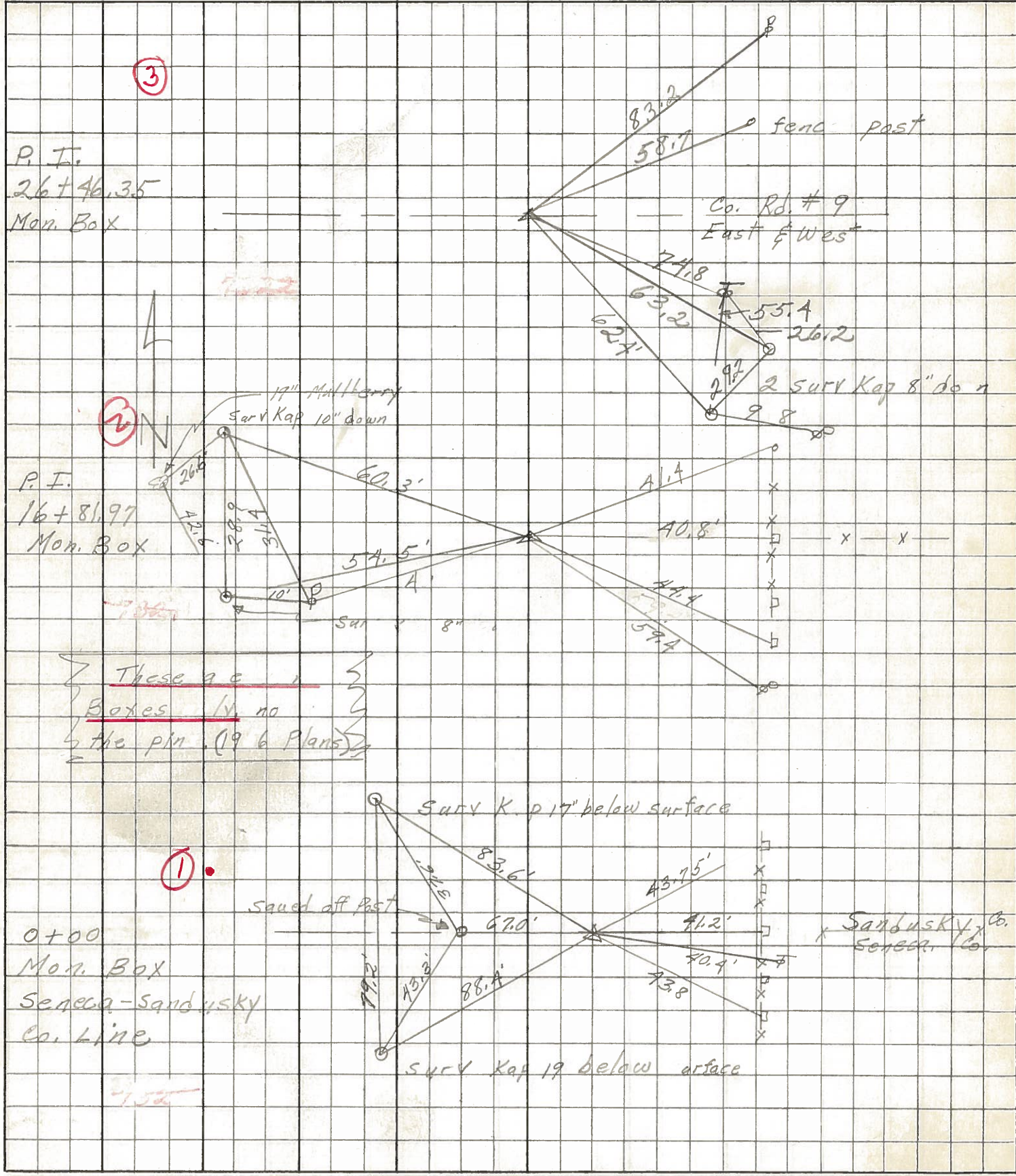
Grid: Northing: 579541.534 Easting: 1784953.138

GPS, SVA122
 6/5/12, MC



PERSONNEL TITLE PERSONNEL TITLE COUNTY Sandusky DATE Feb. 14, 1968
 Mosser _____ S. R. 53 WEATHER _____
 Barbour _____ SEC. no c.l.e N th TEMP. _____
 Redding _____

DESCRIPTION Ties for P JOB NO. _____
 LEFT CENTER LINE RIGHT



These are
 Boxes in no
 the pin (196 Plans)

Sandusky Co.
 Seneca Co.

PERSONNEL TITLE PERSONNEL TITLE

COUNTY Sandusky

DATE

S. R. #53

WEATHER

SEC. B-A

TEMP.

DESCRIPTION From Sen. San Co. line - North

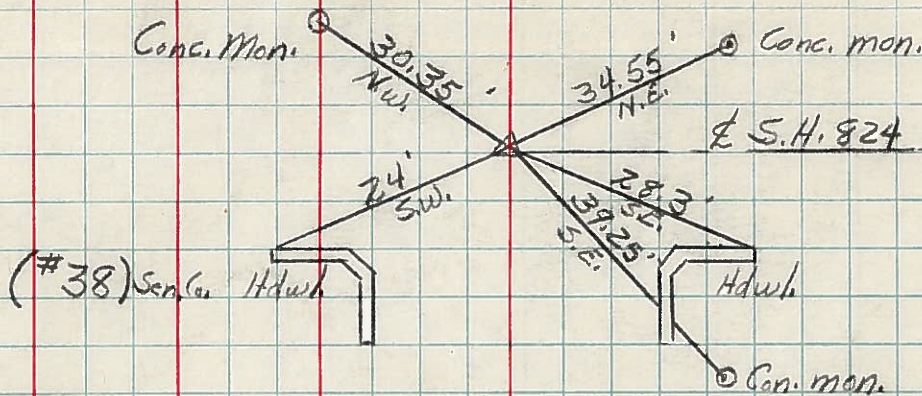
JOB NO.

LEFT

CENTER LINE

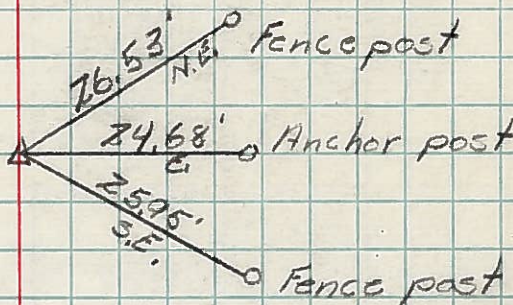
RIGHT

Sta. 0+00



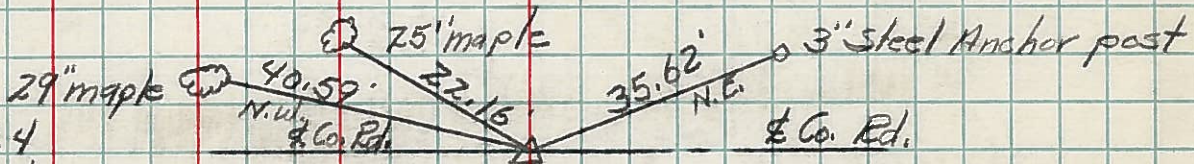
Sta. 16+13.8

Iron pin end #1



Sta. 26+87.4

New ties to corner stone #2



Sta. 53+53

New ties to Corner Stone #3

