

O.D.O.T. DISTRICT 2 SURVEY OFFICE (USE ONLY)

PERSONNEL _____ REFERENCE NO. 3 SHEET 3 OF 25

NOTES RHOADES DATE 6/1/20 ROUTE SR 53
 H.C. O'DONNELL WEATHER SUNNY COUNTY SANDUSKY
 R.C. LEU TEMP. 46° TOWNSHIP BALLVILLE
 SECTION 31

DWG BY O'DONNELL PID 101277

T 4 N R 5 E

TYPE MONUMENT MONBOX W/ 1" IPIN

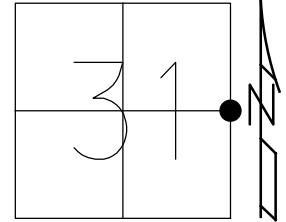
ON SURFACE - ~~BELOW~~ ON

~~LEFT~~ - CL PAV'T - RIGHT 0.6', ±4' N. OF CL WEST
- TO - EDGE PAVEMENT

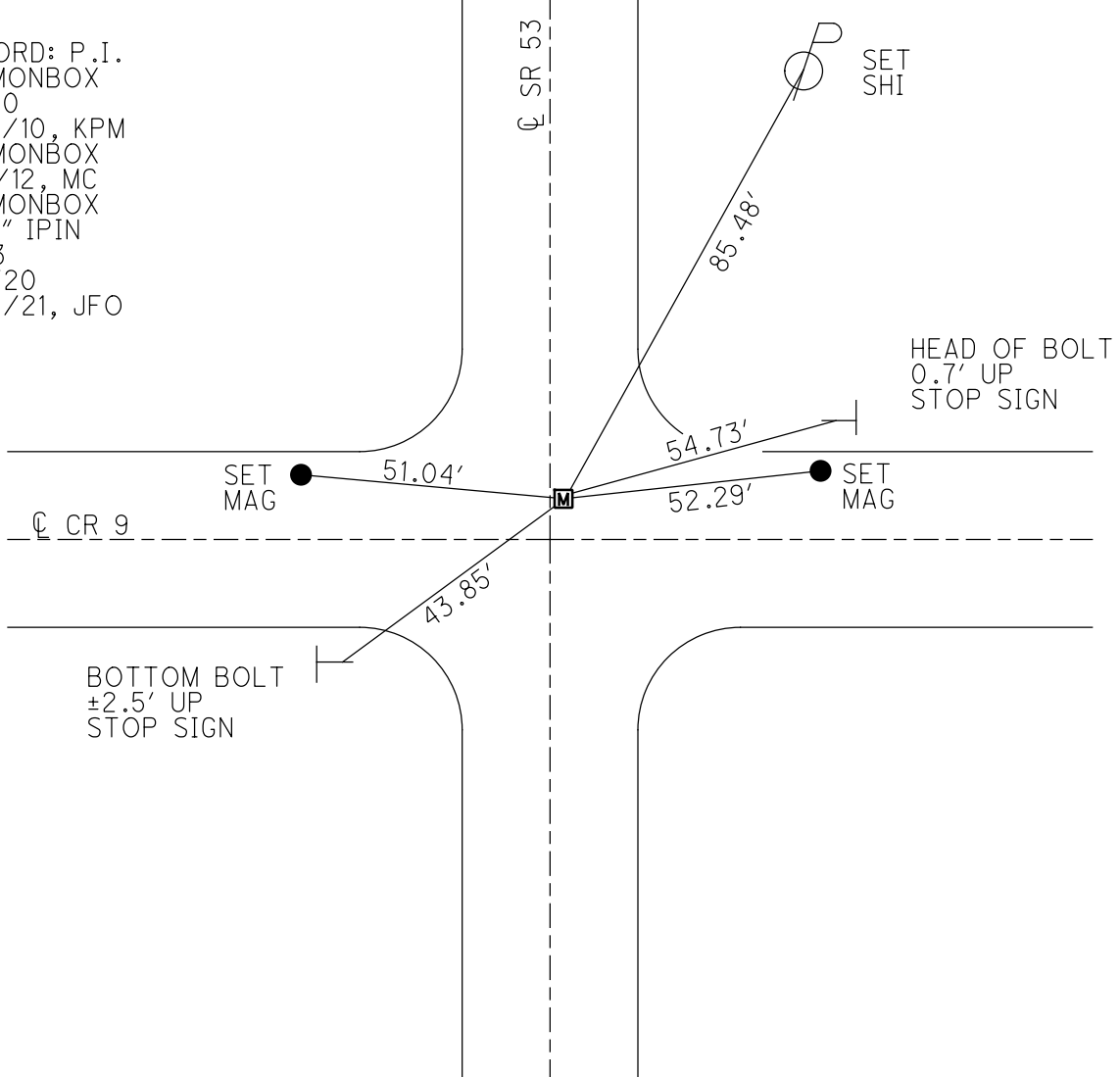
STATION: 26+45.64

HORZ.DATUM: NAD83 (2011) GEOID: 2012A

GRID: NORTHING: 582185.643 EASTING: 1784865.003



RECORD: P.I.
 FD MONBOX
 SV100
 6/14/10, KPM
 FD MONBOX
 6/5/12, MC
 FD MONBOX
 W/ 1" IPIN
 REF3
 6/1/20
 2/10/21, JFO



O.D.O.T. DISTRICT 2 SURVEY OFFICE (USE ONLY)

PERSONNEL _____ REFERENCE NO. 3 SHEET 3 OF 25

NOTES CANTERBURY DATE 6/5/12 ROUTE SR 53
 H.C. HUSS WEATHER SUNNY COUNTY SANDUSKY
 R.C. COUTCHER TEMP. 92° TOWNSHIP BALLVILLE
 _____ SECTION 31
 _____ T 4 N R 5 E

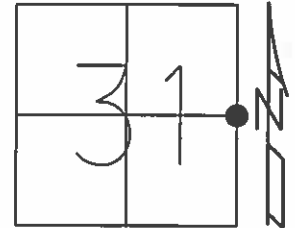
TYPE MONUMENT MON.BOX

ON SURFACE - ~~BELOW~~ ON _____

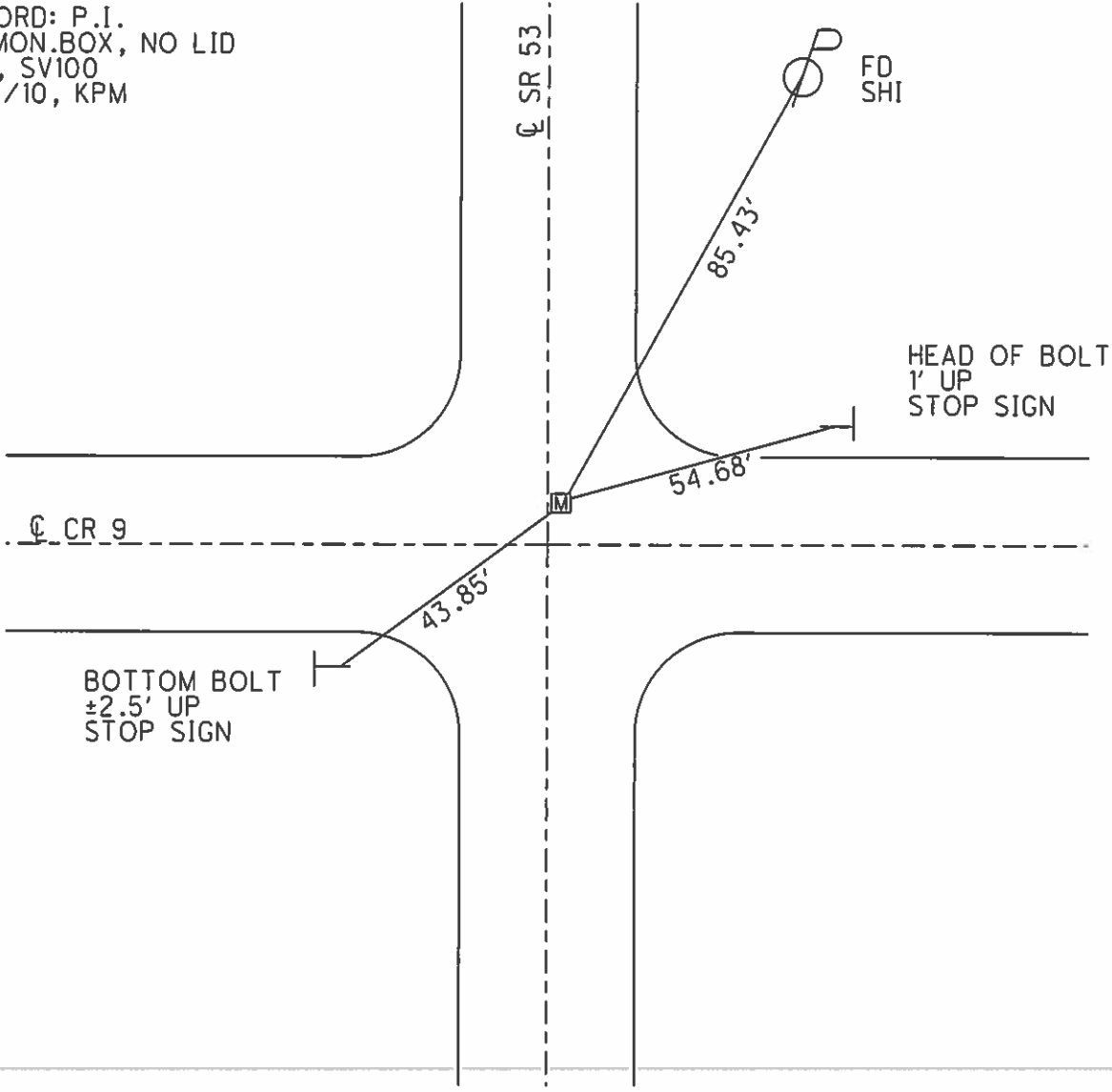
~~LEFT~~ - ☉ PAV'T - RIGHT 0.6', ±4' N. OF ☉ WEST
 - TO - EDGE PAVEMENT

S.L.M. 26+45.64

Grid: Northing: 582185.683 Easting: 1784864.926



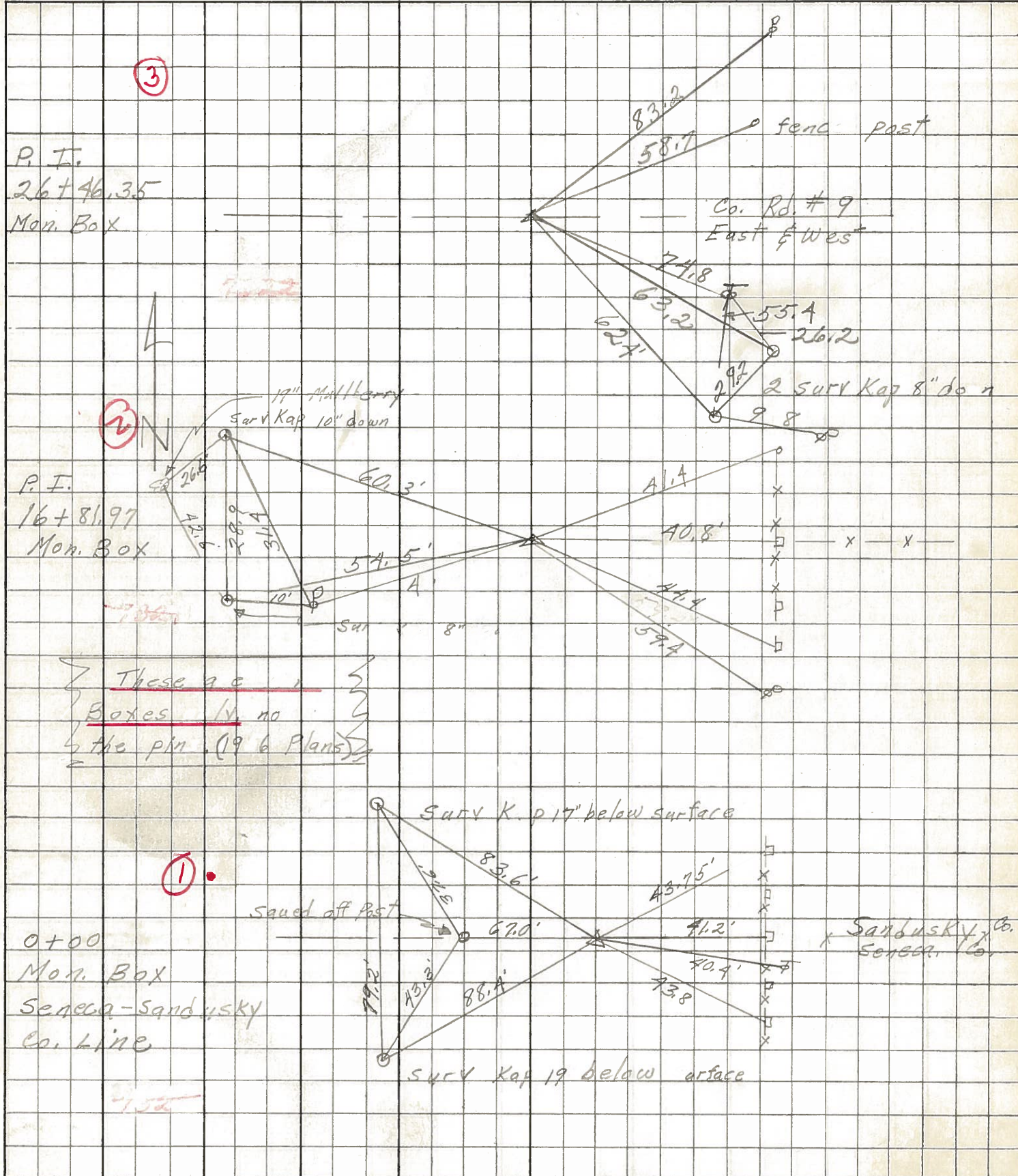
RECORD: P.I.
 FD MON.BOX, NO LID
 GPS, SV100
 6/14/10, KPM



PERSONNEL TITLE PERSONNEL TITLE
 Schneider _____ Potts _____
 Mosser _____
 Barbour _____
 Redding _____

COUNTY Sandusky DATE Feb. 14, 1968
 S. R. 53 WEATHER _____
 SEC. no c.l.e.N th TEMP. _____

DESCRIPTION Ties for P
 LEFT CENTER LINE RIGHT JOB NO. _____



These are
 Boxes in no
 the pin (196 Plans)

Sandusky Co.
 Seneca Co.

PERSONNEL TITLE PERSONNEL TITLE

COUNTY Sandusky

DATE

S. R. #53

WEATHER

SEC. B-A

TEMP.

DESCRIPTION From Sen. San Co. Line - North

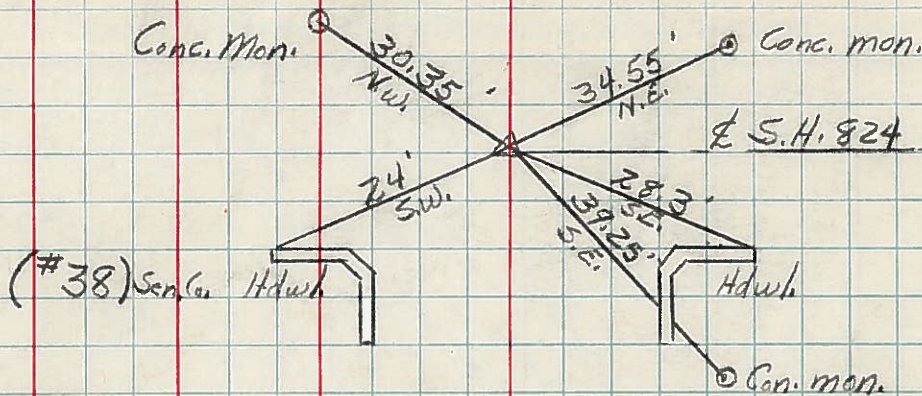
JOB NO.

LEFT

CENTER LINE

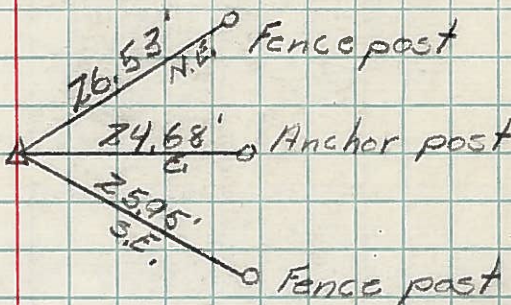
RIGHT

Sta. 0+00



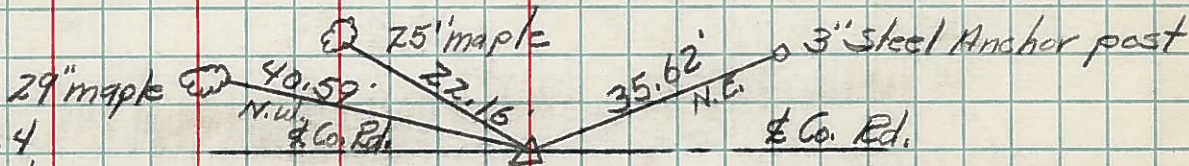
Sta. 16+13.8

Iron pin end #1



Sta. 26+87.4

New ties to corner stone #2



Sta. 53+53

New ties to Corner Stone #3

