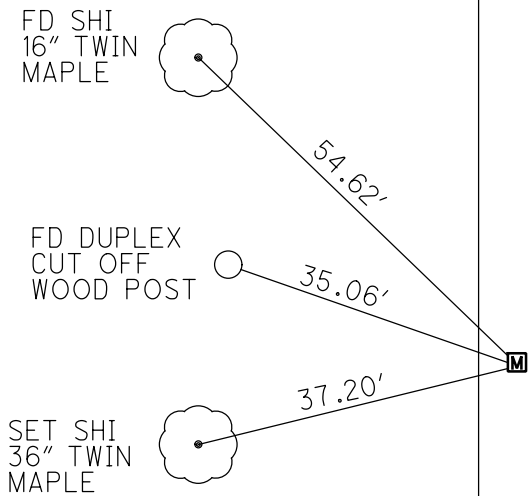
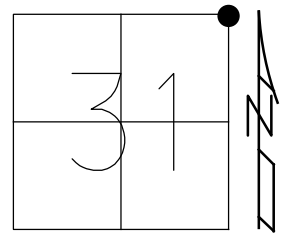


O.D.O.T. DISTRICT 2 SURVEY OFFICE (USE ONLY)

PERSONNEL _____ REFERENCE NO. 4 SHEET 4 OF 25
 NOTES RHOADES DATE 6/1/20 ROUTE SR 53
 H.C. O'DONNELL WEATHER SUNNY COUNTY SANDUSKY
 R.C. LEU TEMP. 46° TOWNSHIP BALLVILLE
 SECTION 31
 DWG BY O'DONNELL PID 101277 T 4 N R 5 E

TYPE MONUMENT MONBOX W/ 1" IPIN
 ON SURFACE - ~~BELOW~~ ON
 LEFT - ☉ PAV'T - ~~RIGHT~~ 5.2'
6.7' TO LT EDGE PAVEMENT
 STATION: 52+93.86

HORZ.DATUM: NAD83 (2011) GEOID: 2012A
 GRID: NORTHING: 584831.039 EASTING: 1784744.613

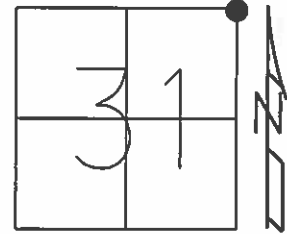


RECORD: P.I.
 FD MONBOX
 SV101
 6/14/10, KPM
 FD MONBOX
 6/5/12, MC
 FD MONBOX
 W/ 1" IPIN
 REF4
 6/1/20, JFO
 NEWREF4
 2/10/21, JFO

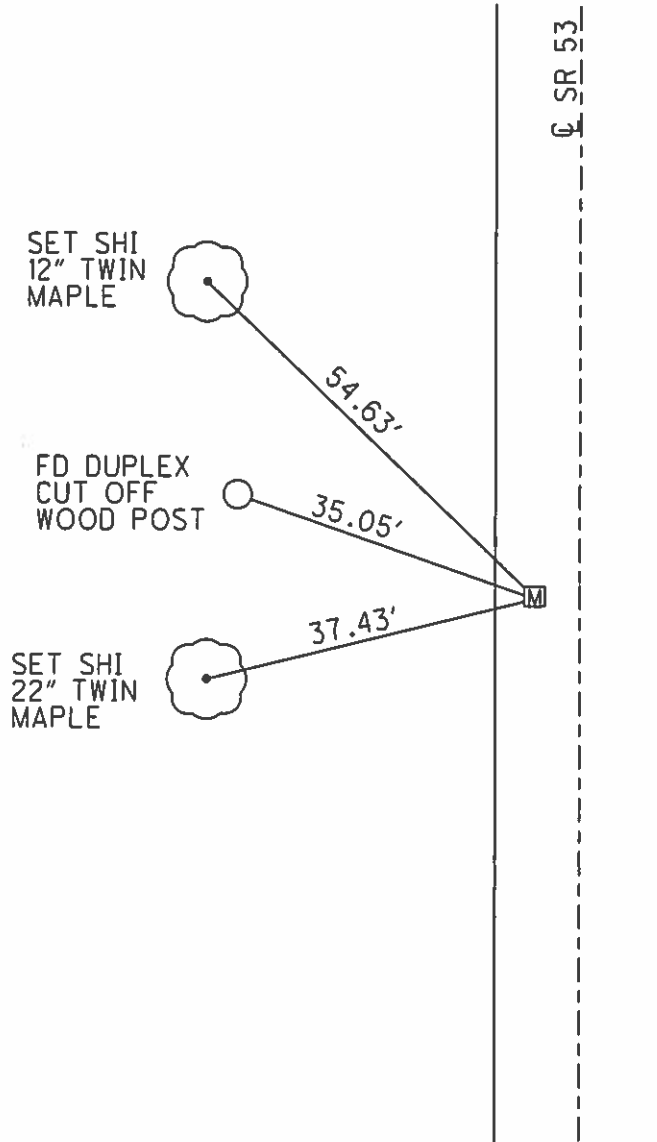
O.D.O.T. DISTRICT 2 SURVEY OFFICE (USE ONLY)

PERSONNEL _____ REFERENCE NO. 4 SHEET 4 OF 25
NOTES CANTERBURY DATE 6/5/12 ROUTE SR 53
H.C. HUSS WEATHER SUNNY COUNTY SANDUSKY
R.C. COUTCHER TEMP. 92° TOWNSHIP BALLVILLE
SECTION 31
T 4 N R 5 E

TYPE MONUMENT MON.BOX
ON SURFACE - ~~BELOW~~ ON
LEFT - Q PAV'T - ~~RIGHT~~ 5.2'
6.7' TO LT EDGE PAVEMENT
S.L.M. 52+93.86
Grid: Northing: 584831.166 Easting: 1784744.527



RECORD: P.I.
FD MON.BOX, NO LID
GPS, SV101
6/14/10, KPM



PERSONNEL TITLE PERSONNEL TITLE
 Schneider _____ Potts _____
 Mosser _____
 Barbour _____
 Redding _____

COUNTY Sandusky DATE Feb. 14, 1968

S. R. 53 WEATHER _____

SEC. Seneca Co. Line-North TEMP. _____

DESCRIPTION Ties for Control Points

JOB NO. _____

