

O.D.O.T. DISTRICT 2 SURVEY OFFICE (USE ONLY)

PERSONNEL \_\_\_\_\_ REFERENCE NO. 4 A SHEET 5 OF 25

NOTES RHOADES DATE 6/1/20 ROUTE SR 53  
 H.C. O'DONNELL WEATHER SUNNY COUNTY SANDUSKY  
 R.C. LEU TEMP. 68° TOWNSHIP BALLVILLE  
 SECTION 30

DWG BY O'DONNELL PID 101277

T 4 N R 5 E

TYPE MONUMENT MONBOX W/ 1" IPIN

ON SURFACE - ~~BELOW~~ ON

LEFT - ☉ PAV'T - RIGHT ON

11.4' TO LT EDGE PAVEMENT

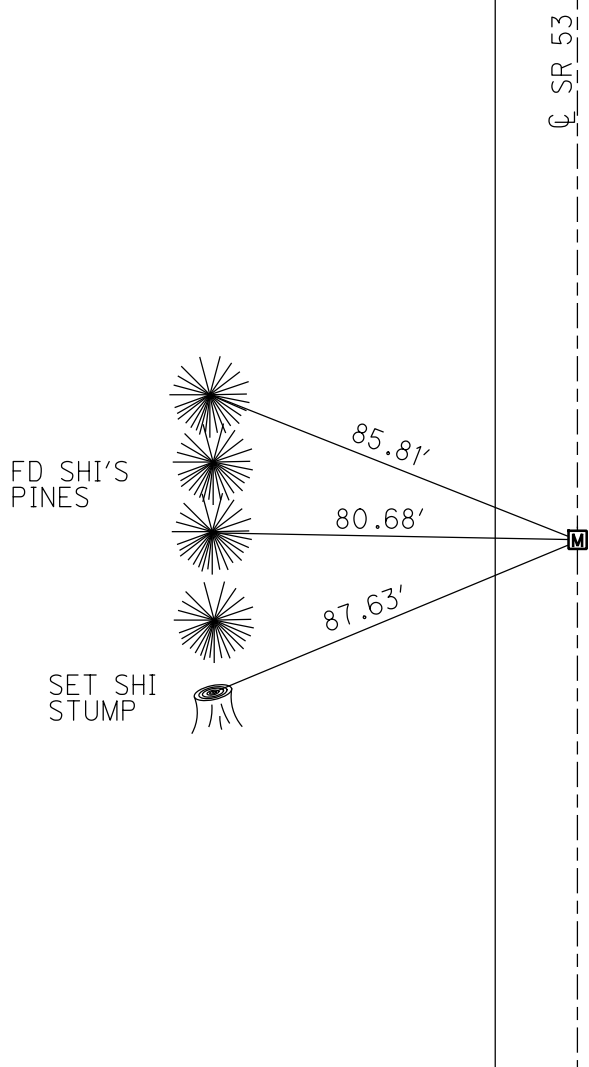
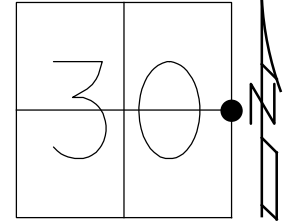
STATION: 81+14.74

HORZ.DATUM: NAD83 (2011)

GEOID: 2012A

GRID: NORTHING: 587652.061

EASTING: 1784757.777

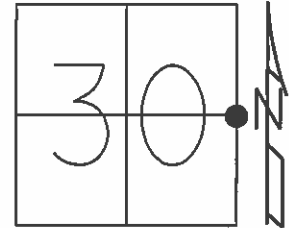


RECORD: P.C.  
 FD MONBOX  
 SV102  
 SHOT 0.1± S. OF IPIN.  
 IPIN UNDER N.EDGE OF BOX  
 6/14/10, KPM  
 FD MONBOX  
 7/6/12, MC  
 FD MONBOX  
 W/ 1" IPIN  
 REFA4  
 6/1/20  
 3/31/21, JFO

O.D.O.T. DISTRICT 2 SURVEY OFFICE (USE ONLY)

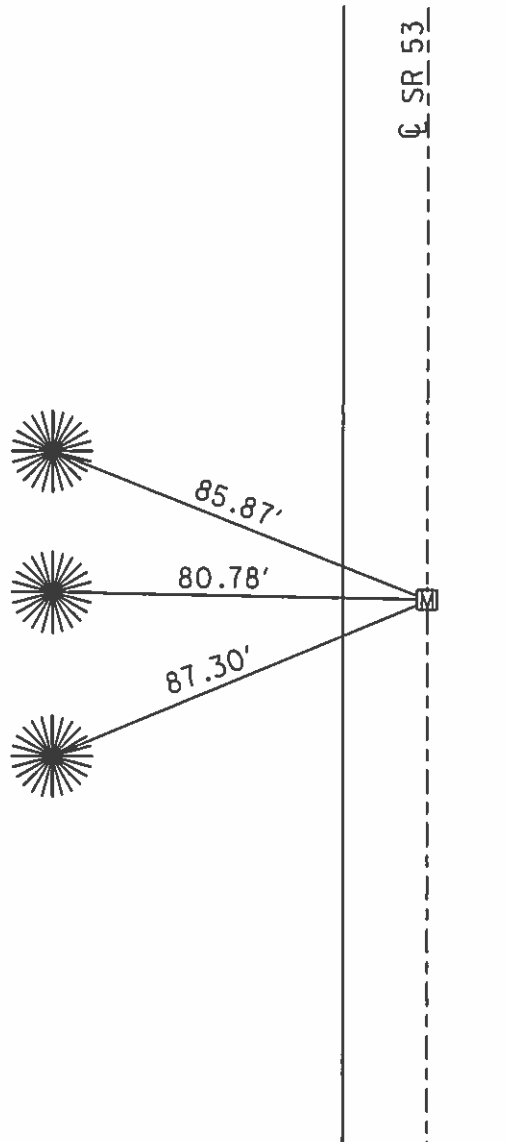
PERSONNEL \_\_\_\_\_ REFERENCE NO. 4 A SHEET 5 OF 25  
 NOTES CANTERBURY DATE 7/6/12 ROUTE SR 53  
 H.C. HUSS WEATHER SUNNY COUNTY SANDUSKY  
 R.C. COUTCHER TEMP. 84° TOWNSHIP BALLVILLE  
 \_\_\_\_\_ SECTION 30  
 \_\_\_\_\_ T 4 N R 5 E

TYPE MONUMENT MON.BOX  
 ON SURFACE - ~~BELOW~~ ON  
 LEFT - ☉ PAV'T - RIGHT ON  
11.4' TO LT EDGE PAVEMENT  
 S.L.M. 81+14.74  
 Grid: Northing: 587652.017 Easting: 1784757.715



RECORD: P.C.  
 FD MON.BOX, NO LID  
 GPS, SV102  
 SHOT 0.1'± S. OF IPIN.  
 IPIN UNDER N.EDGE OF BOX.  
 6/14/10, KPM

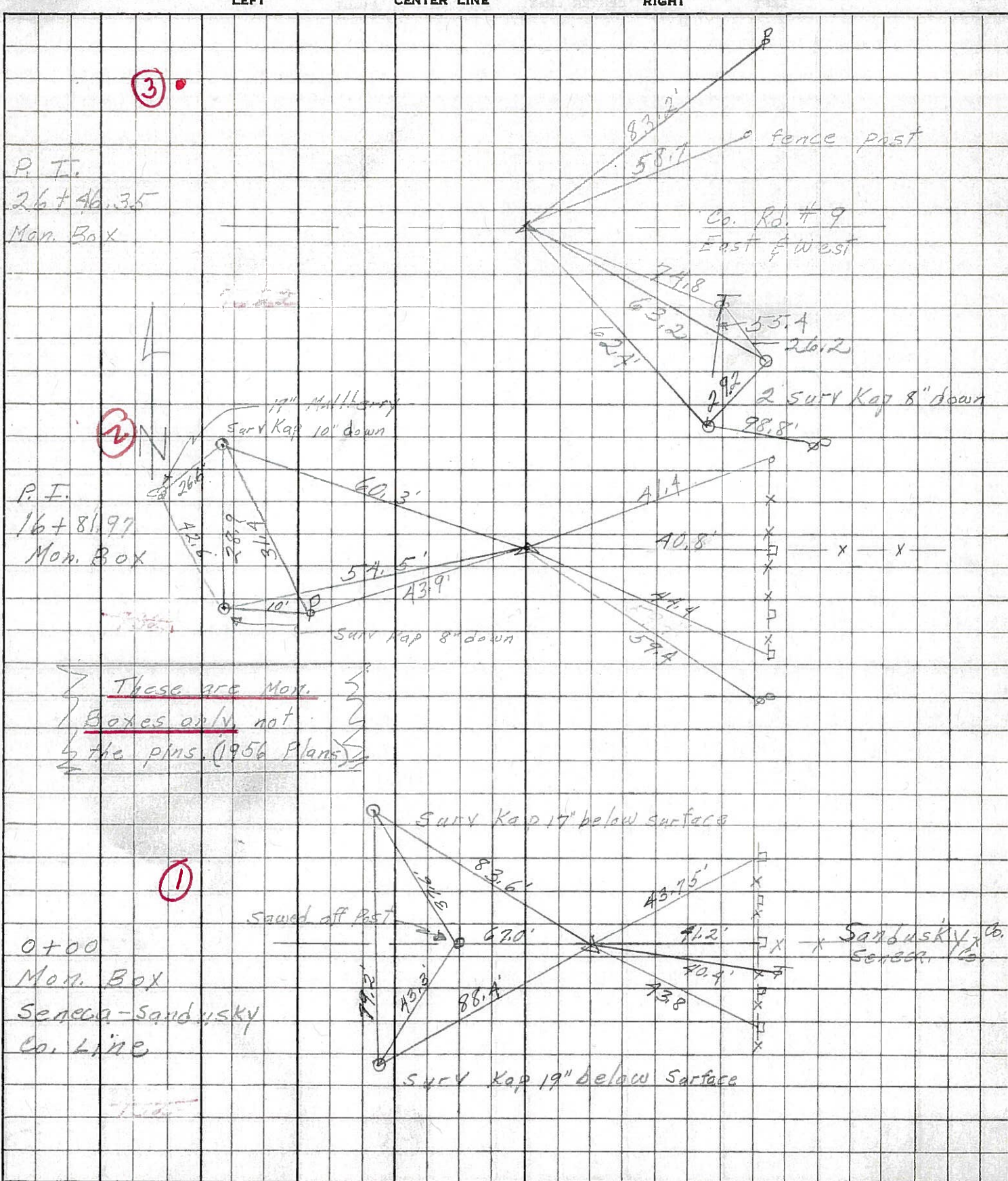
SET SHI  
 IN PINE  
 TREES



PERSONNEL	TITLE	PERSONNEL	TITLE
Schneider		Potts	
Mosser			
Barbour			
Redding			

COUNTY Sandusky DATE Feb. 14, 1968  
 S. R. 53 WEATHER \_\_\_\_\_  
 SEC. Seneca Co. Line-North TEMP. \_\_\_\_\_

DESCRIPTION Ties for Control Points JOB NO. \_\_\_\_\_



These are Mon. Boxes only, not the pins. (1956 Plans)

0+00  
 Mon. Box  
 Seneca-Sandusky  
 Co. Line

Sandusky Co.  
 Seneca Co.

PERSONNEL TITLE PERSONNEL TITLE

COUNTY Sandusky

DATE

S. R. #53

WEATHER

SEC. B-A

TEMP.

DESCRIPTION

LEFT

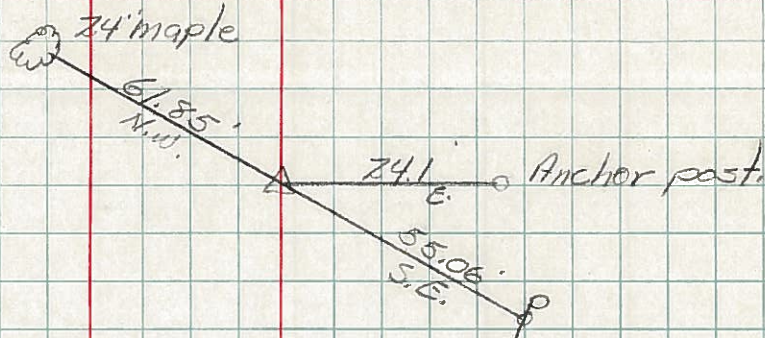
CENTER LINE

RIGHT

JOB NO.

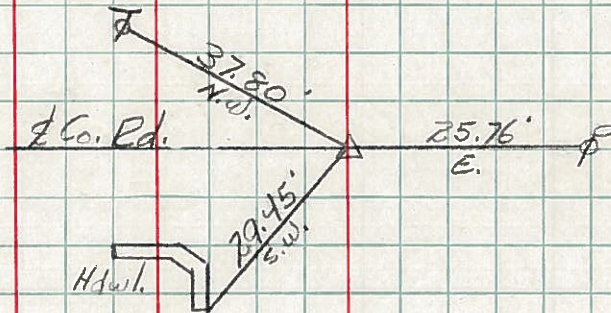
Sta. 80+33  
Corner stone

#4



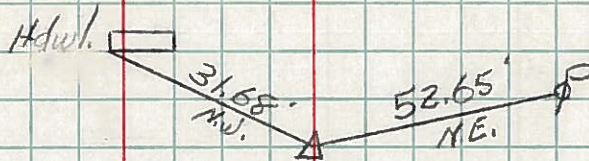
Sta. 92+44.5  
Corner stone

#5



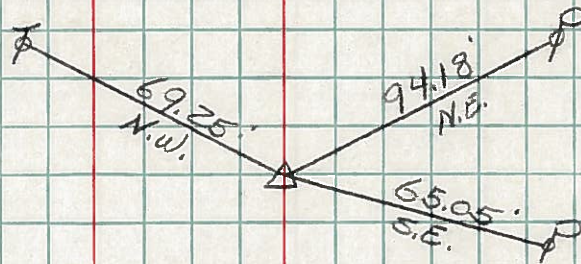
Sta. 102+11.1  
Ties to Corner Stone

#6



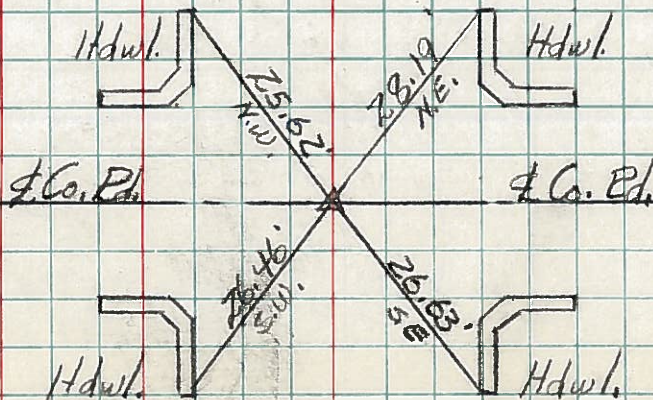
Sta. 115+37.2  
Corner Stone

#7



Sta. 155+23  
Ties to Corner Stone

#8



End of Sec. "B"